

3305622



Antero Resources
Thaddeus Unit 2H
Harrison County West Virginia
Northing: 14231176.62
Easting: 1778722.04
Original Wellpath

WELL DETAILS: Thaddeus Unit 2H						
+N/-S	+E/-W	Northing	Easting	Latitude	Longitude	Slot
0.0	0.0	14231176.62	1778722.0439° 11'	20.911 N80° 30'	42.769 W	Slot

DESIGN TARGET DETAILS								
Name	TVD	+N/-S	+E/-W	Northing	Easting	Latitude	Longitude	Shape
SHL Thaddeus Unit 2H	0.0	0.0	0.0	14231176.62	1778722.0439° 11'	20.911 N80° 30'	42.769 W	Point
Actual BHL Thaddeus Unit 2H	7323.0	-4867.5	2090.8	14226309.12	1780812.8439° 10'	32.672 N80° 30'	16.544 W	Point
PBHL Thaddeus Unit 2H	7328.0	-4867.5	2090.8	14226309.12	1780812.8439° 10'	32.672 N80° 30'	16.543 W	Point

REFERENCE INFORMATION
 Coordinate (N/E) Reference: Well Thaddeus Unit 2H, Grid North
 Vertical (TVD) Reference: Thaddeus Unit 2H 1356' GL + 28' RKB @ 1385.0usft (Original Well Elev)
 Section (N/S) Reference: Slot - @ (LN, 0.0E)
 Measured Depth Reference: Thaddeus Unit 2H 1356' GL + 28' RKB @ 1385.0usft (Original Well Elev)
 Calculation Method: Minimum Curvature

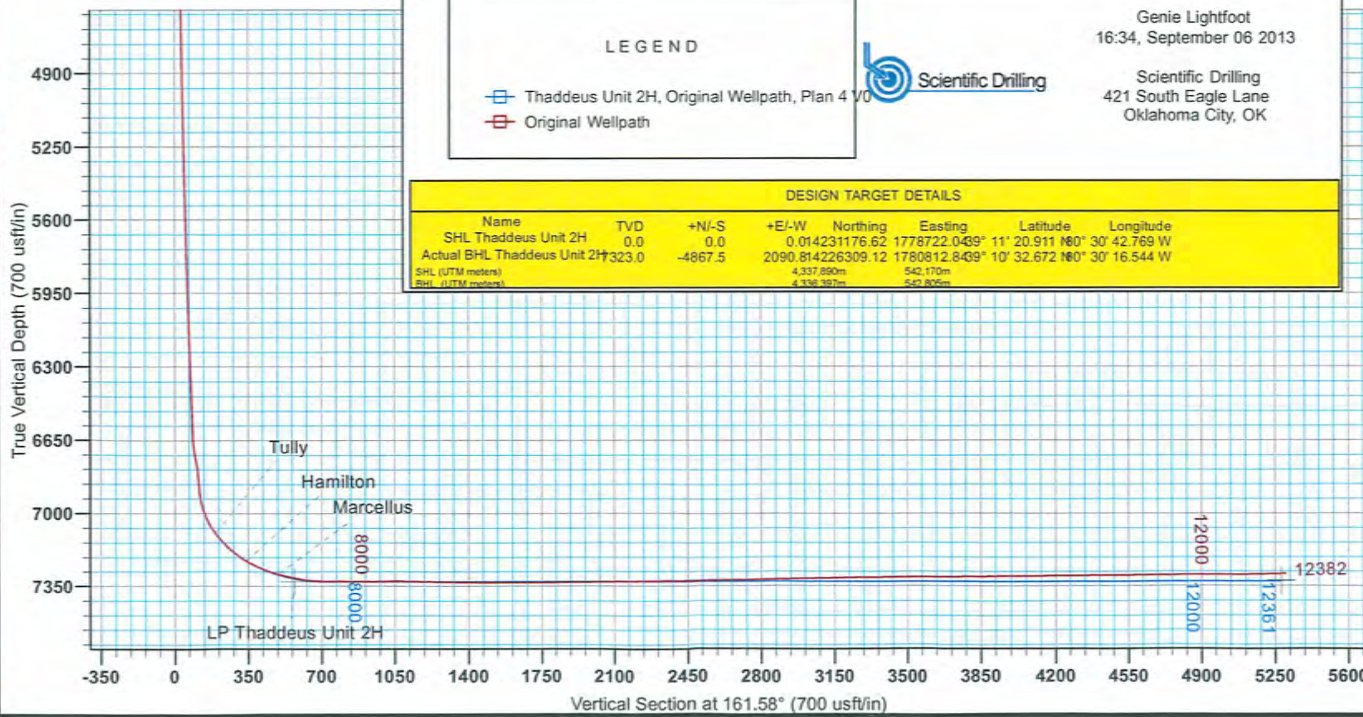
PROJECT DETAILS: Harrison County West Virginia
 Geodetic System: Universal Transverse Mercator (US Survey Feet)
 Datum: NAD 1927 (NADCON CONUS)
 Ellipsoid: Clarke 1866
 Zone: Zone 17N (84 W to 78 W)
 System Datum: Mean Sea Level

LEGEND

 Thaddeus Unit 2H, Original Wellpath, Plan 4 V0
 Original Wellpath

Scientific Drilling
 Genie Lightfoot
 16:34, September 06 2013
 Scientific Drilling
 421 South Eagle Lane
 Oklahoma City, OK

DESIGN TARGET DETAILS								
Name	TVD	+N/-S	+E/-W	Northing	Easting	Latitude	Longitude	
SHL Thaddeus Unit 2H	0.0	0.0	0.0	14231176.62	1778722.0439° 11'	20.911 N80° 30'	42.769 W	
Actual BHL Thaddeus Unit 2H	7323.0	-4867.5	2090.8	14226309.12	1780812.8439° 10'	32.672 N80° 30'	16.544 W	
SHL (UTM meters)				4,337,890m	542,170m			
BHL (UTM meters)				4,336,397m	542,805m			



North Arrow
 To convert Magnetic North to Grid, Subtract 8.88°
 To convert True North to Grid, Subtract 0.31°
 Azimuths to Grid North
 True North: -0.31°
 Magnetic North: -8.88°
 Magnetic Field
 Strength: 52418.0nT
 Dip Angle: 66.86°
 Date: 10/1/2012
 Model: IGRF2010

