

33-05623



Antero Resources
Thaddeus Unit 1H
Harrison County West Virginia
Northing: 14231174.64
Easting: 1778731.85
Original Wellpath

WELL DETAILS: Thaddeus Unit 1H						
+N/-S	+E/-W	Northing	Ground Level: 1358.0	Latitude	Longitude	Slot
0.0	0.0	14231174.64		1778731.8539° 11' 20.891 N80° 30' 42.645 W		

DESIGN TARGET DETAILS								
Name	TVD	+N/-S	+E/-W	Northing	Easting	Latitude	Longitude	Shape
SHL Thaddeus Unit 1H	0.0	0.0	0.0	14231174.64	1778731.8539° 11' 20.891 N80° 30' 42.645 W			Point
Actual BHL Thaddeus Unit 1H	7328.0	-5828.4		1678.6 14225346.28	1780410.4539° 10' 23.173 N80° 30' 21.722 W			Point
PBHL TGT Thaddeus 1H	7333.0	-5828.4		1678.6 14225346.28	1780410.4539° 10' 23.173 N80° 30' 21.722 W			Point

REFERENCE INFORMATION
 Coordinate (N/E) Reference: Well Thaddeus Unit 1H, Grid North
 Vertical (TVD) Reference: Thaddeus 1H 1358 GL + 28 KB @ 1386.0uoft
 Section (VS) Reference: Slot - (0.0N, 0.0E)
 Measured Depth Reference: Thaddeus 1H 1358 GL + 28 KB @ 1386.0uoft
 Calculation Method: Minimum Curvature

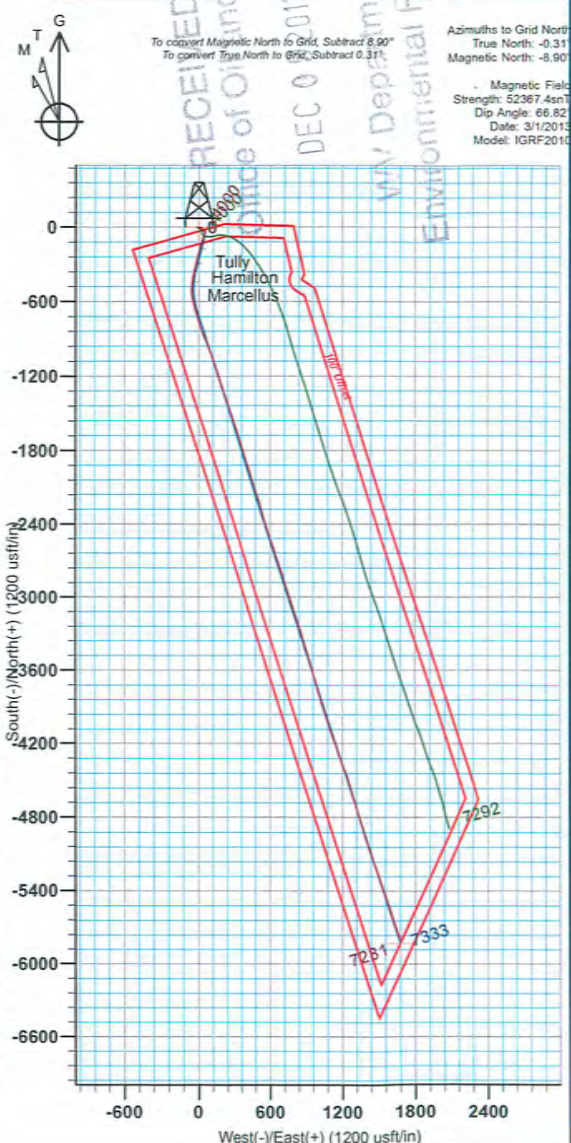
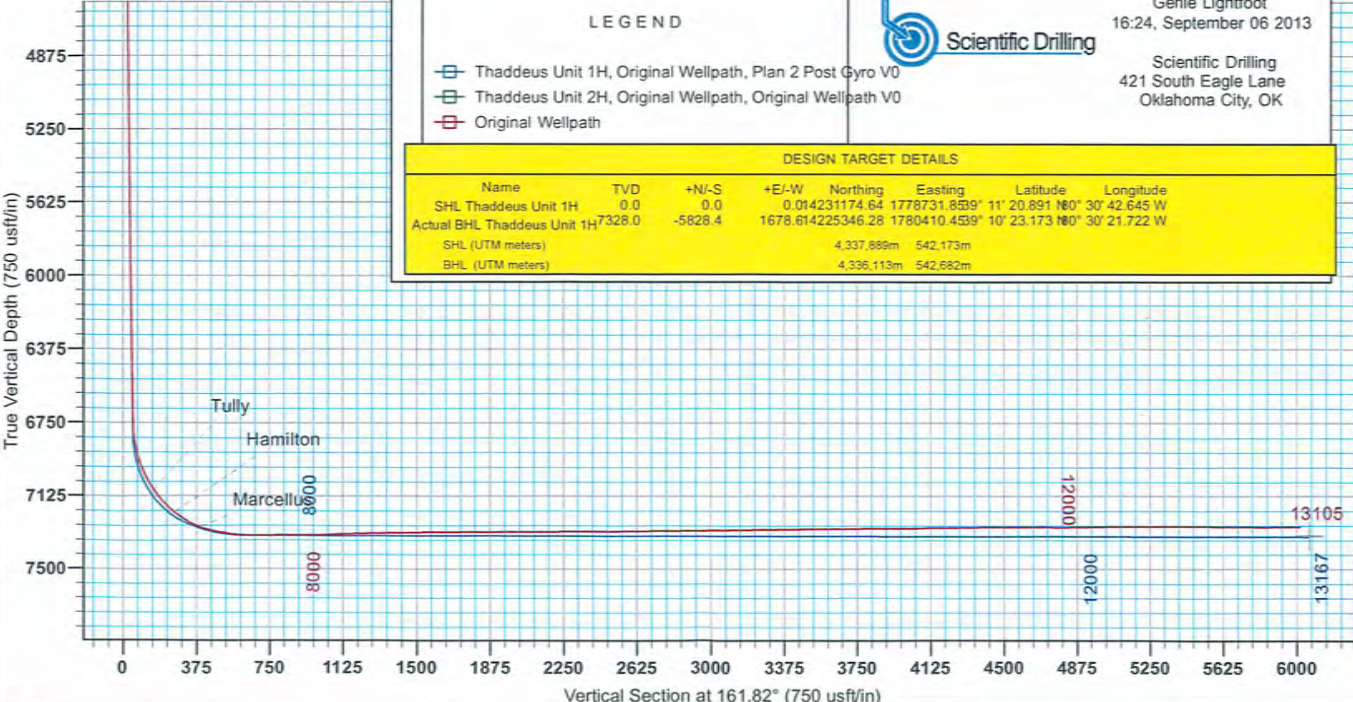
PROJECT DETAILS: Harrison County West Virginia
 Geodetic System: Universal Transverse Mercator (US Survey Feet)
 Datum: NAD 1927 (NADCON CONUS)
 Ellipsoid: Clarke 1866
 Zone: Zone 17N (84 W to 78 W)
 System Datum: Mean Sea Level

LEGEND

- Thaddeus Unit 1H, Original Wellpath, Plan 2 Post Gyro V0
- Thaddeus Unit 2H, Original Wellpath, Original Wellpath V0
- Original Wellpath

Scientific Drilling
 Genie Lightfoot
 16:24, September 06 2013
 Scientific Drilling
 421 South Eagle Lane
 Oklahoma City, OK

DESIGN TARGET DETAILS							
Name	TVD	+N/-S	+E/-W	Northing	Easting	Latitude	Longitude
SHL Thaddeus Unit 1H	0.0	0.0	0.0	14231174.64	1778731.8539° 11' 20.891 N80° 30' 42.645 W		
Actual BHL Thaddeus Unit 1H	7328.0	-5828.4		1678.6 14225346.28	1780410.4539° 10' 23.173 N80° 30' 21.722 W		
SHL (UTM meters)				4,337,889m	542,173m		
BHL (UTM meters)				4,335,113m	542,582m		



RECEIVED
 Office of Oil and Gas
 DEC 0 2013
 Environmental Protection
 Department of

Azimuths to Grid North
 True North: -0.31
 Magnetic North: -8.90
 Magnetic Field
 Strength: 52367.4nT
 Dip Angle: 66.82
 Date: 3/1/2013
 Model: IGRF2010