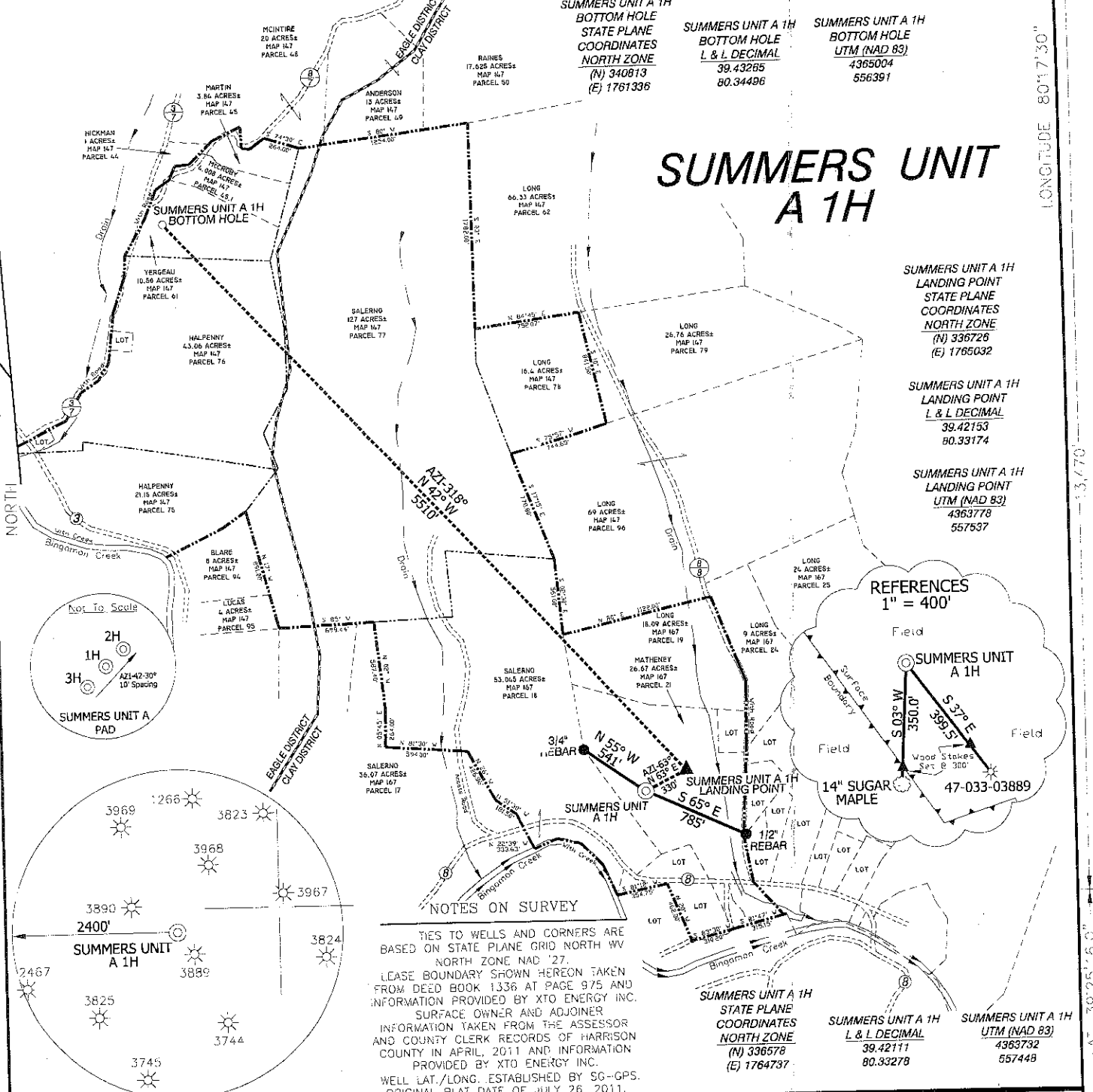


FORM WW 6 LONG. 80°19'58.0" LATITUDE 39°27'30" LONGITUDE 80°17'30"



SUMMERS UNIT A 1H

SUMMERS UNIT A 1H BOTTOM HOLE STATE PLANE COORDINATES NORTH ZONE (N) 340813 (E) 1761336

SUMMERS UNIT A 1H BOTTOM HOLE L & L DECIMAL 39.43265 80.34496

SUMMERS UNIT A 1H BOTTOM HOLE UTM (NAD 83) 4365004 556391

SUMMERS UNIT A 1H LANDING POINT STATE PLANE COORDINATES NORTH ZONE (N) 336726 (E) 1765032

SUMMERS UNIT A 1H LANDING POINT L & L DECIMAL 39.42153 80.33174

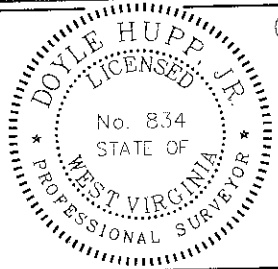
SUMMERS UNIT A 1H LANDING POINT UTM (NAD 83) 4363778 557537

SUMMERS UNIT A 1H STATE PLANE COORDINATES NORTH ZONE (N) 336578 (E) 1764737

SUMMERS UNIT A 1H L & L DECIMAL 39.42111 80.33278

SUMMERS UNIT A 1H UTM (NAD 83) 4363732 557448

I THE UNDERSIGNED, HEREBY CERTIFY THAT THIS PLAT IS CORRECT TO THE BEST OF MY KNOWLEDGE AND BELIEF AND SHOWS ALL THE INFORMATION REQUIRED BY LAW AND THE REGULATIONS ISSUED AND PRESCRIBED BY THE DIVISION OF ENVIRONMENTAL PROTECTION.



P.S. 834
Doyle Hupp Jr.
 HUPP Surveying & Mapping
 P.O. Box 647 Grantsville, WV 26147
 (304) 354-7035 EMAIL: hupp@frontiernet.net

(+) DENOTES LOCATION OF WELL ON UNITED STATES TOPOGRAPHIC MAPS.
 DATE MARCH 14, 2012
 OPERATORS WELL NO. SUMMERS UNIT A 1H
 API NO. 47-033-05645H6A
 STATE COUNTY PERMIT

MINIMUM DEGREE OF ACCURACY 1/2500 FILE NO. W1809 (BK51-47)
 PROVEN SOURCE OF ELEVATION SG-GPS(OPUS) SCALE 1" = 1000'

STATE OF WEST VIRGINIA
 DIVISION OF ENVIRONMENTAL PROTECTION
 OFFICE OF OIL AND GAS

WELL TYPE: OIL ___ GAS INJECTION ___ WASTE DISPOSAL ___ IF "GAS" PRODUCTION STORAGE ___ DEEP ___ SHALLOW

LOCATION: ELEVATION 1060' WATERSHED BINGAMON CREEK DISTRICT CLAY COUNTY HARRISON QUADRANGLE SHINNSTON 7.5'

SURFACE OWNER JOHN J. MATHENEY JR. ACREAGE 26.67±
 ROYALTY OWNER ROBERT SUMMERS, et al LEASE ACREAGE 278.36±
 PROPOSED WORK: LEASE NO. _____

DRILL CONVERT ___ DRILL DEEPER ___ REDRILL ___ FRACTURE OR STIMULATE PLUG OFF O.D.
 FORMATION ___ PERFORATE NEW FORMATION ___ PLUG AND ABANDON ___ CLEAN OUT AND REPLUG ___ OTHER ___
 PHYSICAL CHANGE IN WELL (SPECIFY) ___ TARGET FORMATION MARCELLUS ESTIMATED DEPTH TVD- 7.250' MD-14.500'

WELL OPERATOR XTO ENERGY INC. DESIGNATED AGENT GARY BEALL
 ADDRESS 810 HOUSTON STREET FORT WORTH, TX 76102 ADDRESS P.O. BOX 1008 JANE 08/03/2012/B

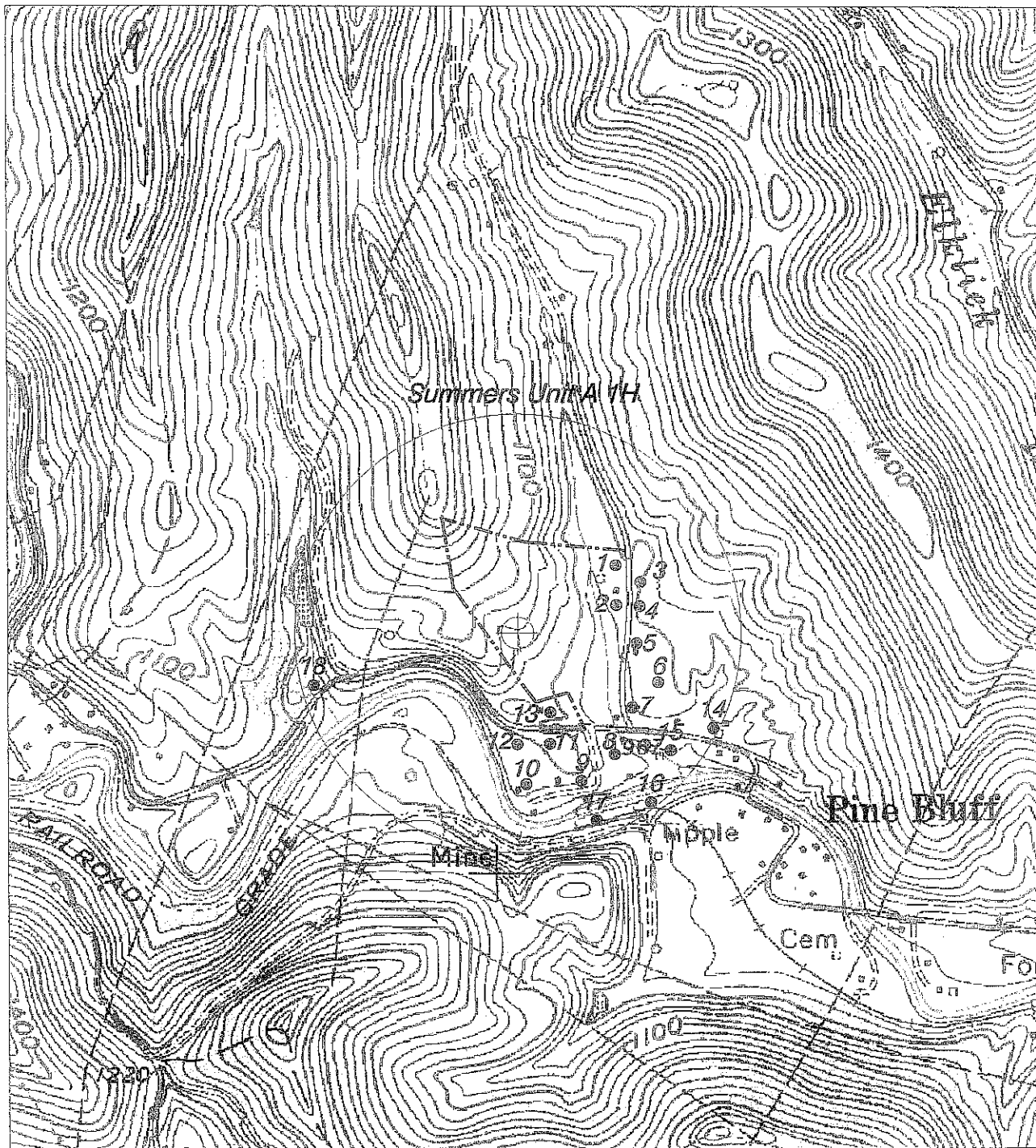
33-05645

Form W-9

XTO ENERGY INC.

Page 1 of 1

SUMMERS UNIT A 1H Water



HUPP Surveying & Mapping

P.O. BOX 647 GRANTSVILLE, WV 26147
PH: (304)354-7035 E-MAIL: hupp@frontiernet.net

1" = 1000'
Shinnston Quad

XTO Energy Inc.
810 Houston Street
Forth Worth, TX 76102

08/03/2012