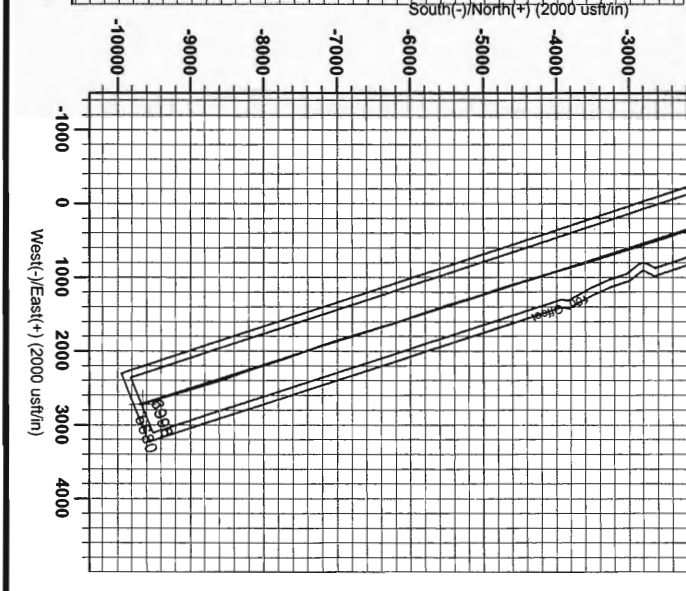
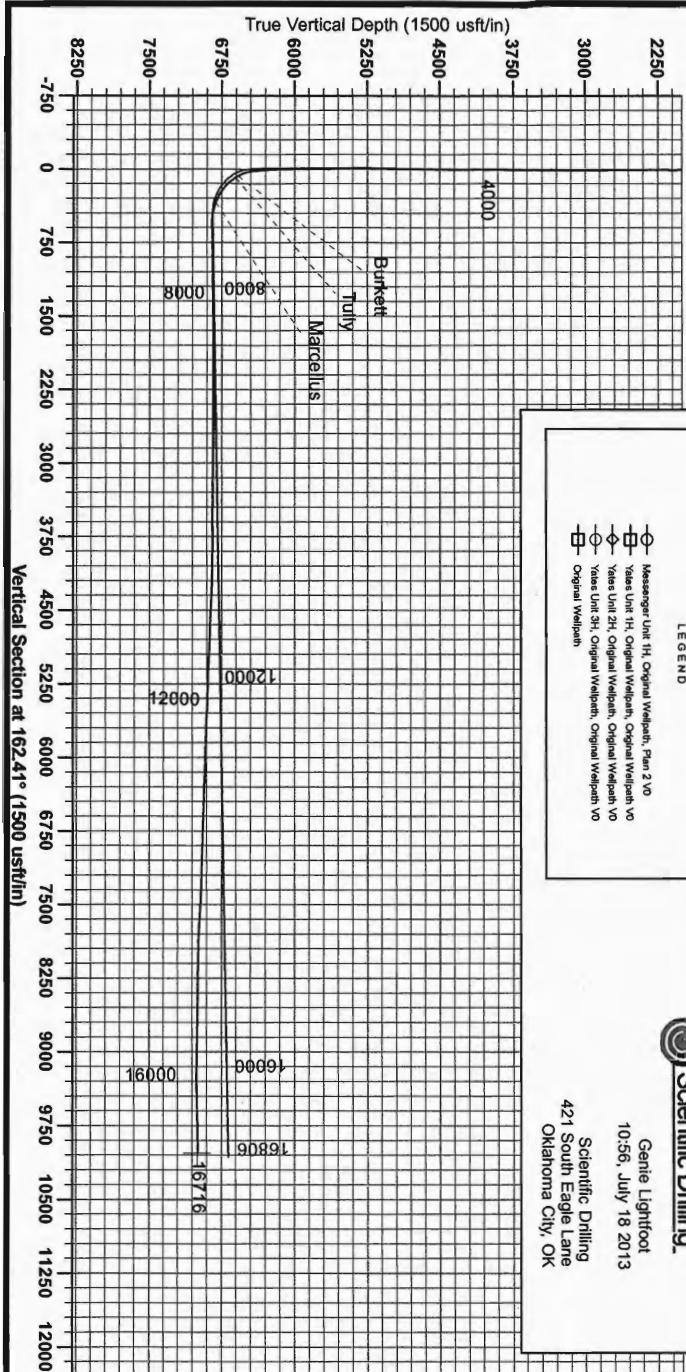




Antero Resources
 Messenger Unit 1H
 Harrison County West Virginia
 Northing: 14253905.69
 Easting: 1799020.97
 Original Wellpath



WELL DETAILS: Messenger Unit 1H

Name	Messenger Unit 1H
Ground Level	1180.0
Easting	1799020.97
Latitude	39° 15' 4.482" N 80° 28' 23.088" W
Longitude	
Slot	

PROJECT DETAIL S: Harrison County West Virginia

Geodetic System: Universal Transverse Mercator (US Survey Feet)
 Datum: NAD 1983 (NAD83 CONUS)
 Ellipsoid: GRS 1980
 Zone: Zone 17N (84 W to 78 W)
 System Datum: Mean Sea Level

REFERENCE INFORMATION

Original Well Path: Well Messenger Unit 1H (84 W to 78 W)
 Vertical (VD) Reference: 2004.02.02.1187.04.27.000 @ 1187.04.27.000 (Original Well Bore)
 Measured: 2004.02.02.1187.04.27.000 @ 1187.04.27.000 (Original Well Bore)
 Calculation Method: Minimum Curvature

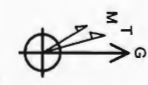
Well Location Coordinates (NAD 83)

Name	TVD	-N/S	+E/W	Northing	Easting	Latitude	Longitude
SHL Messenger Unit 1H	0.0	0.0	0.0	1799020.97	14253905.69	39° 15' 4.482" N	80° 28' 23.088" W
Actual BHL Messenger Unit 1H	6998.4	-6958.3	2721.1	14244247.40	1801742.0539	13° 28' 8.19" N	80° 25' 40.259" W
SHL (UTM meters)				4,344,832.696m	546,302.322m		
BHL (UTM meters)				4,341,895.817	549,189.200m		

LEGEND

- Messenger Unit 1H, Original Wellpath, Plan 2 VO
- Vases Unit 1H, Original Wellpath, Original Wellpath VO
- Vases Unit 2H, Original Wellpath, Original Wellpath VO
- Vases Unit 3H, Original Wellpath, Original Wellpath VO
- Original Wellpath

Scientific Drilling.
 Gentle Lightfoot
 10-56, July 18 2013
 Scientific Drilling
 421 South Eagle Lane
 Oklahoma City, OK



To convert Magnetic North to Grid North
 True North = Magnetic North + 35°

Magnetic Field
 Strength: 52438.2aNT
 Dip Angle: 66.90°
 Date: 10/15/2012
 Model: IGMF2010

RECEIVED
 Office of Oil and Gas
 May 5 2013
 WV Department of Environmental Protection

01/17/2014