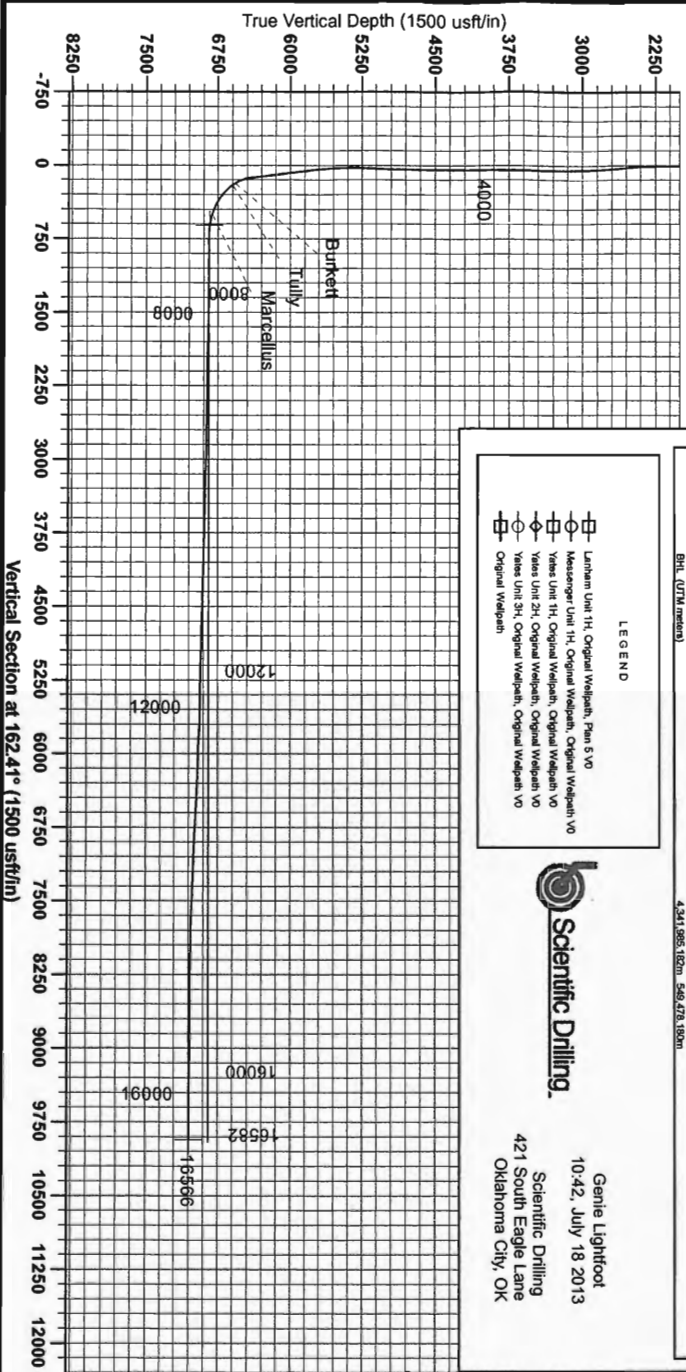




Antero Resources
 Lanham Unit 1H
 Harrison County West Virginia
 Northing: 14253890.60
 Easting: 1799034.08
 Original Wellpath



WELL DETAILS: Lanham Unit 1H

N-S	E-W	Northing	Ground Level	1189.0	Spot
0.0	0.0	14253890.60	1799034.08	98° 15' 43.52" N 80° 28' 22.822" W	

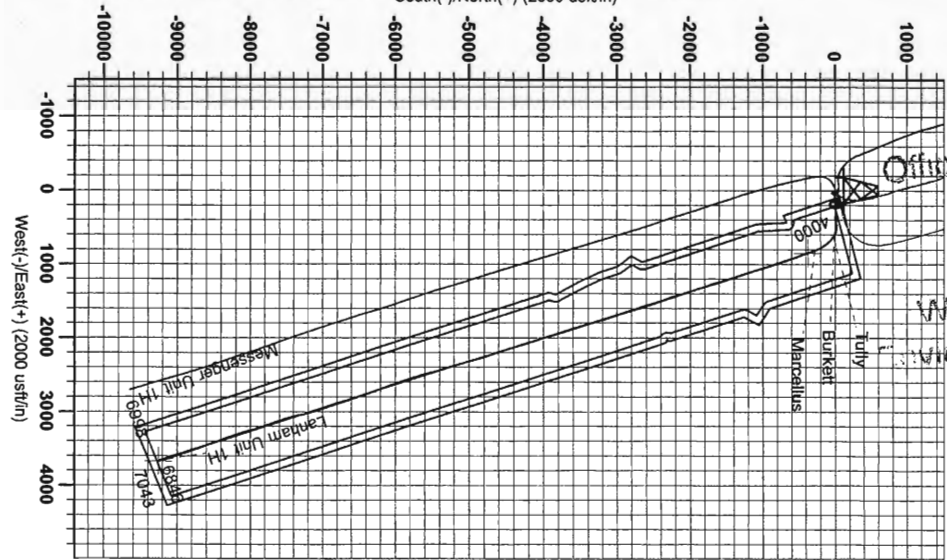
PROJECT DETAILS: Harrison County West Virginia
 Geodetic System: Universal Transverse Mercator (US Survey Feet)
 Datum: NAD 1927 (NADCON CONUS)
 Ellipsoid: Clarke 1866
 Zone: Zone 17N (84 W to 78 W)
 System Datum: Mean Sea Level

REFERENCE INFORMATION
 Coordinates (NAD 83)
 Well Location Coordinates (NAD 83)
 Name: SHL Lanham Unit 1H
 TVD: 7042.7
 Northing: 14253890.60
 Easting: 1799034.08
 SHL (UTM meters): 4344.813080m
 BRH (UTM meters): 4341.9851820m

LEGEND

- Lanham Unit 1H, Original Wellpath, Plan 5V0
- Messenger Unit 1H, Original Wellpath, Original Wellpath V0
- ◇ Vases Unit 1H, Original Wellpath, Original Wellpath V0
- ◇ Vases Unit 2H, Original Wellpath, Original Wellpath V0
- ◇ Vases Unit 3H, Original Wellpath, Original Wellpath V0
- ◇ Original Wellpath

Scientific Drilling
 421 South Eagle Lane
 Oklahoma City, OK
 10:42, July 18 2013



RECEIVED
 Office of Oil and Gas
 DEC 0 2013
 WV Department of Environmental Protection
 To convert Magnetic Northing to Geodetic Northing subtract 0.00°
 To convert Magnetic Easting to Geodetic Easting subtract 0.35°
 Admitts to GHD North
 True to GHD North
 Magnetic North: -9.00°
 Magnetic Field
 Strength: 52426.1nT
 Dip Angle: 68.89°
 Decl: 10.12°
 Model: IGRF2010

01/17/2014