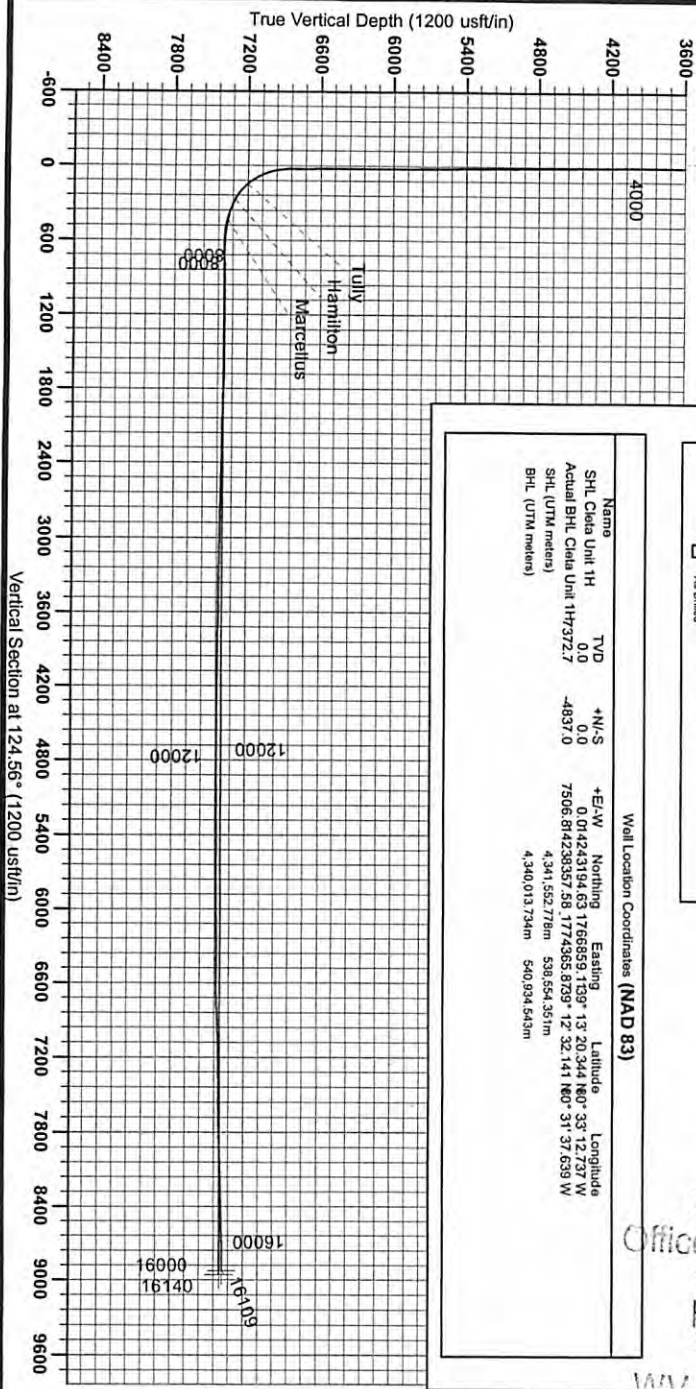


33-05659



Antero Resources
 Cieta Unit 1H
 Harrison County West Virginia
 Northing: 14243194.63
 Easting: 1766859.11
 As Drilled



WELL DETAILS: Cieta Unit 1H

Ground Level	1465.0	Latitude	39° 12' 27.73" N	Longitude	107° 37' 52.73" W
+N-S	0.0	Easting	1766859.11397	Slut	
+E-W	0.0	Northing	14243194.63		

PROJECT DETAILS: Harrison County West Virginia
 Geologic System: Universal Transverse Mercator (US Survey Feet)
 Datum: NAD 1983 (NAD83 CONUS)
 Ellipsoid: GRS 1980
 Zone: Zone 17N (64 W to 71 W)
 System Datum: Mean Sea Level

LEGEND

- Cieta Unit 1H, Original Wellpath, Plan + Post Opn VO
- Cieta Unit 2H, Original Wellpath, Original Wellpath VO
- △ Cieta Unit 2H, Seismic Wellpath, Seismic Wellpath VO
- ⊖ As Drilled

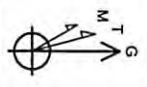
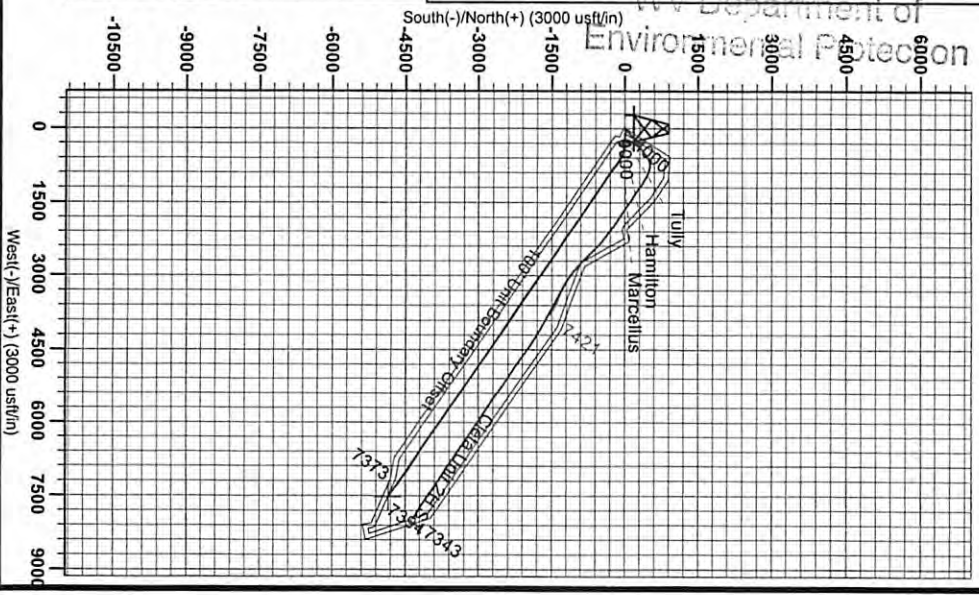
Well Location Coordinates (NAD 83)

Name	TVD	+N-S	+E-W	Northing	Easting	Latitude	Longitude
SHL Cieta Unit 1H	0.0	0.0	0.0	14243194.63	1766859.11397	39° 12' 27.73" N	107° 37' 52.73" W
Actual BHL Cieta Unit 1H	372.7	-4837.0	7506.814239357	581774565.87397	12° 32' 14.11" N	80° 31' 37.639" W	
SHL (UTM meters)			4,341,555.778m	538,554.351m			
BHL (UTM meters)			4,340,013.734m	540,934.543m			

REFERENCE INFORMATION

Geographic NAD 83 Reference: WGS 84 Datum (NAD 83)
 Datum: NAD 1983 (NAD83 CONUS)
 Ellipsoid: GRS 1980
 Zone: Zone 17N (64 W to 71 W)
 System Datum: Mean Sea Level

RECEIVED
 July 18 2013
 Scientific Drilling
 421 South Eagle Lane
 Oklahoma City, OK



To convert Magnetic North to Grid, Subtract 8.93°
 To convert True North to Grid, Subtract 0.29°

Admiralty Grid North
 True North: -0.28
 Magnetic North: -8.93

Magnetic Field
 Strength: 52.40 kA/m
 Declination: 8.93°
 Date: 07/20/2013
 Model: IGRF2010

01/10/2014