

4,620' to Top Hole

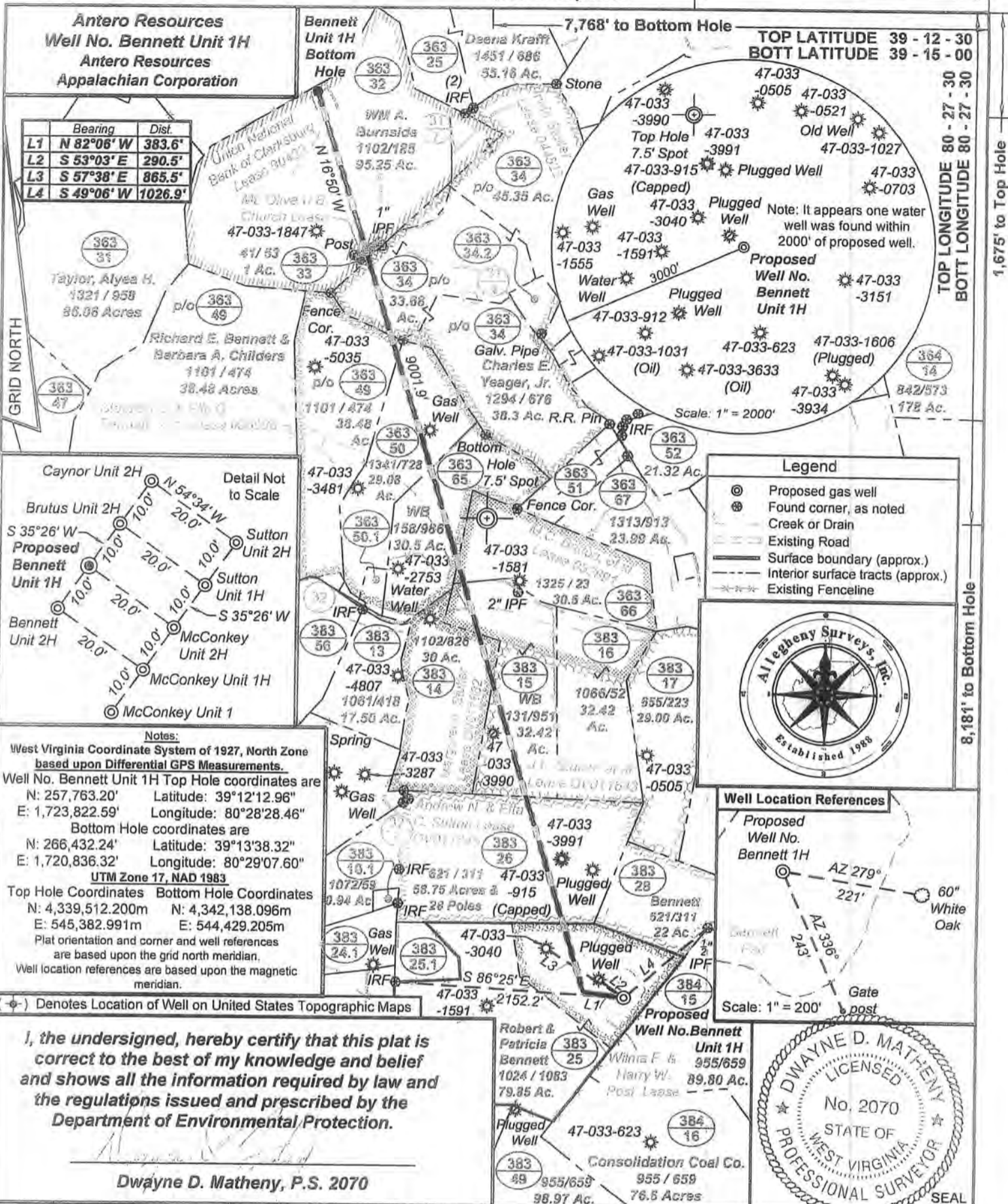
7,768' to Bottom Hole

TOP LATITUDE 39 - 12 - 30
BOTT LATITUDE 39 - 15 - 00

TOP LONGITUDE 80 - 27 - 30
BOTT LONGITUDE 80 - 27 - 30

1,675' to Top Hole

8,181' to Bottom Hole



Antero Resources
Well No. **Bennett Unit 1H**
Antero Resources
Appalachian Corporation

	Bearing	Dist.
L1	N 82°06' W	383.6'
L2	S 53°03' E	290.5'
L3	S 57°38' E	865.5'
L4	S 49°06' W	1026.9'

Legend

- ⊙ Proposed gas well
- ⊗ Found corner, as noted
- Creek or Drain
- Existing Road
- Surface boundary (approx.)
- - - Interior surface tracts (approx.)
- Existing Fenceline



Well Location References

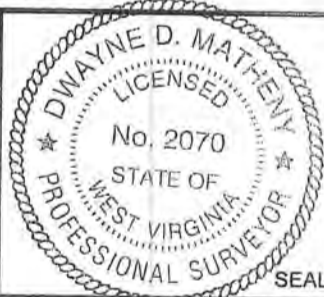


Notes:
West Virginia Coordinate System of 1927, North Zone based upon Differential GPS Measurements.
Well No. Bennett Unit 1H Top Hole coordinates are
N: 257,763.20' Latitude: 39°12'12.96"
E: 1,723,822.59' Longitude: 80°28'28.46"
Bottom Hole coordinates are
N: 266,432.24' Latitude: 39°13'38.32"
E: 1,720,836.32' Longitude: 80°29'07.60"
UTM Zone 17, NAD 1983
Top Hole Coordinates Bottom Hole Coordinates
N: 4,339,512.200m N: 4,342,138.096m
E: 545,382.991m E: 544,429.205m
Plat orientation and corner and well references are based upon the grid north meridian.
Well location references are based upon the magnetic meridian.

(⊙) Denotes Location of Well on United States Topographic Maps

I, the undersigned, hereby certify that this plat is correct to the best of my knowledge and belief and shows all the information required by law and the regulations issued and prescribed by the Department of Environmental Protection.

Dwayne D. Matheny, P.S. 2070



FILE NO: 102-36-U-11
DRAWING NO: 102-11 Bennett 1H Well Plat
SCALE: 1" = 1200'
MINIMUM DEGREE OF ACCURACY: Submeter
PROVEN SOURCE OF ELEVATION: WVDOT, Bridgeport, WV

STATE OF WEST VIRGINIA
DEPARTMENT OF ENVIRONMENTAL PROTECTION
OIL AND GAS DIVISION

DATE: August 14 20 12
OPERATOR'S WELL NO. Bennett Unit 1H
API WELL NO
47 - 033 - 05680 H6A
STATE COUNTY PERMIT

WELL TYPE: OIL GAS LIQUID INJECTION WASTE DISPOSAL
(IF GAS) PRODUCTION: STORAGE DEEP SHALLOW
LOCATION: ELEVATION: 1235' WATERSHED: Isaacs Creek QUADRANGLE: West Milford
DISTRICT: Union Mt. Olive U.B. Church; Margaret A. Stutler; Andrew N. & Etta C. Sutton; Wilma F. & Harry W. Post; Stephen E. & Ellen G. Bennett, et al; J.L. Stutler, et al; Irwin Stutler; M.C. Britton, et al
SURFACE OWNER: Robert & Patricia Bennett
ROYALTY OWNER: Union National Bank of Clarksburg
PROPOSED WORK: DRILL CONVERT DRILL DEEPER FRACTURE OR STIMULATE PLUG OFF OLD FORMATION
 PERFORATE NEW FORMATION OTHER PHYSICAL CHANGE IN WELL (SPECIFY)
 PLUG AND ABANDON CLEAN OUT AND REPLUG TARGET FORMATION: Marcellus Shale ESTIMATED DEPTH: 8,200' TVD / 17,500' MD

WELL OPERATOR: Antero Resources Appalachian Corporation DESIGNATED AGENT: Dianna Stamper - CT Corporation System
ADDRESS: 1625 17th Street ADDRESS: 5400 D Big Tyler Road
Denver, CO 80202 Charleston, WV 25313

10/19/2012

33-05680



PREPARED BY: [unreadable]

RECEIVED
Office of Oil and Gas

AUG 27 2012

WV Department of
Environmental Protection

Antero Resources Corporation

APPALACHIAN BASIN

Bennett Unit 1H

Harrison County

REMARKS
QUADRANGLE: WEST MILFORD
WATERSHED: ISAACS CREEK
DISTRICT: UNION



August 15, 2012

10/19/2012