

AUG 10 2015

WV GEOLOGICAL SURVEY  
MORGANTOWN, WV



Antero Resources  
Myers Unit 1H  
Harrison County West Virginia  
Northing: 14235710.93  
Easting: 1784995.57  
As Drilled

**WELL DETAILS: Myers Unit 1H**

+N/S 0.0    +E/W 0.0    Northing 14235710.93    Easting 1784995.57    39° 12' 5.4027600" 29' 22.740"W    Longitude 1784995.57    39° 12' 5.4027600" 29' 22.740"W    Slot

**PROJECT DETAILS: Harrison County West Virginia**

Geoid System: Universal Transverse Mercator (US Survey Feet)  
Datum: NAD 1983 (NADCON CONUS)  
Elevation: Clarke 1866  
Zone: Zone 17N (64 W to 78 W)  
System Datum: Mean Sea Level

**REFERENCE INFORMATION**

Coordinate (N/E) Reference: NAD 1983 US 16 Cont. Mark  
Vertical (V) Reference: Myers Unit 1H ID: 1277 + 29' Post @ 1503 surf  
Horizontal (H) Reference: Myers Unit 1H ID: 1277 + 29' Post @ 1503 surf  
Measurement Method: Minimum Curvature

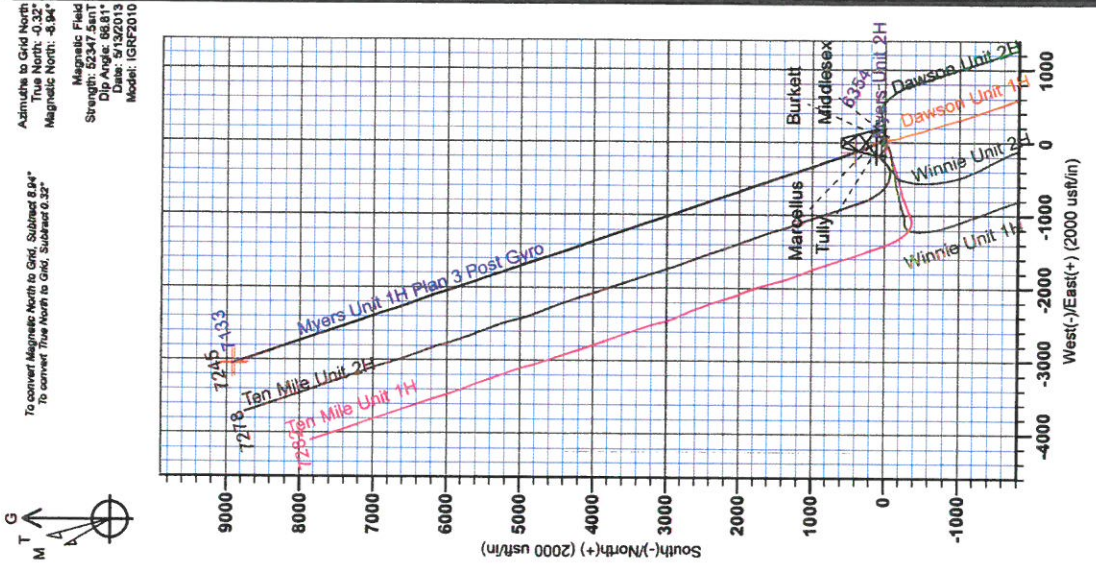
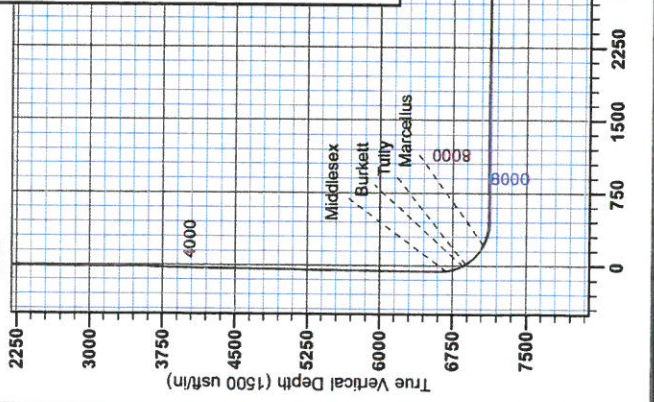
**Scientific Drilling**  
Gene Lightfoot  
16.33, August 29 2013  
421 South Eagle Lane  
Oklahoma City, OK

**LEGEND**

- Dawson Unit 1H, Original Wellpath, Original Wellpath V0
- △ Ten Mile Unit 1H, Original Wellpath, As Drilled V0
- ◇ Ten Mile Unit 2H, Original Wellpath, As Drilled V0
- ⊕ Myers Unit 1H, Original Wellpath, As Drilled V0
- ⊗ Winnie Unit 1H, Original Wellpath, Original Wellpath V0
- ⊖ Myers Unit 1H, Original Wellpath, Plan 3 Post Gyro
- ⊕ Winnie Unit 2H, Original Wellpath, Original Wellpath V0
- ⊖ Dawson Unit 2H, Original Wellpath, Original Wellpath V0
- ⊖ As Drilled

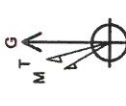
**DESIGN TARGET DETAILS**

Name	TVD	+N/S	+E/W	Northing	Easting	Latitude	Longitude
SHL Myers Unit 1H	0.0	0.0	0.0	14235710.93	1784995.57	39° 12' 5.4027600" 29' 22.740" W	1784995.57
Actual BHL Myers Unit 1H	245.3	8888.5	-3041.2	14244599.43	1781934.4089	13° 33.455 N 80° 30' 0.762 W	



To convert Magnetic North to Grid, Subtract 8.94"  
To convert True North to Grid, Subtract 6.32"

Magnetic North: -8.94"  
Magnetic Field Strength: 52347.5nT  
Dip Angle: 66.81°  
Date: 10/20/13  
Model: IGRF2010



Vertical Section at 341.05° (1500 usft/m)



**RECEIVED**

AUG 10 2015

WV GEOLOGICAL SURVEY  
MORGANTOWN, WV

## **Antero Resources**

**Harrison County West Virginia  
Winnie/Dawson/Tenmile Pad  
Myers Unit 1H  
Original Wellpath**

**Design: As Drilled**

## **EOW Completion Report**

**29 August, 2013**





AUG 10 2015



**WV GEOLOGICAL SURVEY  
MORGANTOWN, WV**

EOW Completion Report



<b>Company:</b>	Antero Resources	<b>Local Co-ordinate Reference:</b>	Well Myers Unit 1H
<b>Project:</b>	Harrison County West Virginia	<b>TVD Reference:</b>	Myers Unit 1H GL 1278' + 25' RKB @ 1303.0usft
<b>Site:</b>	Winnie/Dawson/Tenmile Pad	<b>MD Reference:</b>	Myers Unit 1H GL 1278' + 25' RKB @ 1303.0usft
<b>Well:</b>	Myers Unit 1H	<b>North Reference:</b>	Grid
<b>Wellbore:</b>	Original Wellpath	<b>Survey Calculation Method:</b>	Minimum Curvature
<b>Design:</b>	As Drilled	<b>Database:</b>	Oklahoma District

<b>Project</b>	Harrison County West Virginia, Harrison County, USA		
<b>Map System:</b>	Universal Transverse Mercator (US Survey Feet)	<b>System Datum:</b>	Mean Sea Level
<b>Geo Datum:</b>	NAD 1927 (NADCON CONUS)		
<b>Map Zone:</b>	Zone 17N (84 W to 78 W)		

<b>Site</b>	Winnie/Dawson/Tenmile Pad				
<b>Site Position:</b>		<b>Northing:</b>	14,235,752.63 usft	<b>Latitude:</b>	39° 12' 5.817 N
<b>From:</b>	Map	<b>Easting:</b>	1,784,952.46 usft	<b>Longitude:</b>	80° 29' 23.285 W
<b>Position Uncertainty:</b>	0.0 usft	<b>Slot Radius:</b>	13-3/16"	<b>Grid Convergence:</b>	0.32 °

<b>Well</b>	Myers Unit 1H, Marcellus					
<b>Well Position</b>	<b>+N/-S</b>	0.0 usft	<b>Northing:</b>	14,235,710.93 usft	<b>Latitude:</b>	39° 12' 5.402 N
	<b>+E/-W</b>	0.0 usft	<b>Easting:</b>	1,784,995.57 usft	<b>Longitude:</b>	80° 29' 22.740 W
<b>Position Uncertainty</b>	2.0 usft		<b>Wellhead Elevation:</b>	1,303.0 usft	<b>Ground Level:</b>	1,278.0 usft

<b>Wellbore</b>	Original Wellpath				
-----------------	-------------------	--	--	--	--

Magnetics	Model Name	Sample Date	Declination (°)	Dip Angle (°)	Field Strength (nT)
	IGRF2010	5/13/2013	-8.61	66.81	52,347

<b>Design</b>	As Drilled				
---------------	------------	--	--	--	--

**Audit Notes:**

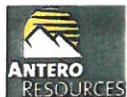
<b>Version:</b>	1.0	<b>Phase:</b>	ACTUAL	<b>Tie On Depth:</b>	0.0
-----------------	-----	---------------	--------	----------------------	-----

Vertical Section:	Depth From (TVD) (usft)	+N/-S (usft)	+E/-W (usft)	Direction (°)
	0.0	0.0	0.0	341.05

Survey Program		Date 8/29/2013			
From (usft)	To (usft)	Survey (Wellbore)	Tool Name	Description	
178.0	6,482.0	Survey #1 Gyro (Original Wellpath)	SDI Standard Keeper	Scientific Drilling Intl. Standard Wireline Keeper	
6,504.0	16,372.0	Survey #2 MWD (Original Wellpath)	SDI MWD	Scientific Drilling Intl. MWD - Standard ver 1.0.1	

MD (usft)	Inc (°)	Azi (azimuth) (°)	TVD (usft)	N/S (usft)	E/W (usft)	V. Sec (usft)	DLeg (°/100usft)
0.0	0.00	0.00	0.0	0.0	0.0	0.0	0.00
178.0	0.42	117.80	178.0	-0.3	0.6	-0.5	0.24
209.0	0.55	125.51	209.0	-0.4	0.8	-0.7	0.47
240.0	0.47	138.14	240.0	-0.6	1.0	-0.9	0.44
270.0	0.42	133.07	270.0	-0.8	1.2	-1.1	0.21
301.0	0.24	79.33	301.0	-0.9	1.3	-1.2	1.09
332.0	0.28	127.18	332.0	-0.9	1.4	-1.3	0.69
362.0	0.46	146.91	362.0	-1.0	1.6	-1.5	0.73
393.0	0.34	149.60	393.0	-1.2	1.7	-1.7	0.39
454.0	0.46	153.70	454.0	-1.6	1.9	-2.1	0.20
545.0	0.46	151.14	545.0	-2.2	2.2	-2.8	0.02

AUG 10 2015



WV GEOLOGICAL SURVEY  
MORGANTOWN, WV

EOW Completion Report



**Company:** Antero Resources  
**Project:** Harrison County West Virginia  
**Site:** Winnie/Dawson/Tenmile Pad  
**Well:** Myers Unit 1H  
**Wellbore:** Original Wellpath  
**Design:** As Drilled

**Local Co-ordinate Reference:** Well Myers Unit 1H  
**TVD Reference:** Myers Unit 1H GL 1278' + 25' RKB @ 1303.0usft  
**MD Reference:** Myers Unit 1H GL 1278' + 25' RKB @ 1303.0usft  
**North Reference:** Grid  
**Survey Calculation Method:** Minimum Curvature  
**Database:** Oklahoma District

**Survey**

MD (usft)	Inc (°)	Azi (azimuth) (°)	TVD (usft)	N/S (usft)	E/W (usft)	V. Sec (usft)	DLeg (°/100usft)
637.0	0.34	154.52	637.0	-2.8	2.5	-3.5	0.13
728.0	0.32	149.60	728.0	-3.3	2.8	-4.0	0.04
820.0	0.39	152.38	820.0	-3.8	3.0	-4.6	0.08
912.0	0.42	163.53	912.0	-4.4	3.3	-5.2	0.09
1,005.0	0.40	158.11	1,005.0	-5.0	3.5	-5.9	0.05
1,130.0	0.41	160.44	1,130.0	-5.8	3.8	-6.7	0.02
1,256.0	0.49	150.67	1,256.0	-6.7	4.2	-7.7	0.09
1,382.0	0.39	153.31	1,382.0	-7.6	4.7	-8.7	0.08
1,507.0	0.40	165.64	1,507.0	-8.4	5.0	-9.5	0.07
1,634.0	0.29	148.23	1,634.0	-9.1	5.3	-10.3	0.12
1,759.0	0.32	131.16	1,759.0	-9.6	5.7	-10.9	0.08
1,887.0	0.38	139.07	1,887.0	-10.1	6.2	-11.6	0.06
2,015.0	0.40	133.77	2,015.0	-10.8	6.8	-12.4	0.03
2,141.0	0.39	115.82	2,141.0	-11.3	7.5	-13.1	0.10
2,269.0	0.51	119.46	2,268.9	-11.7	8.4	-13.8	0.10
2,396.0	0.55	114.35	2,395.9	-12.3	9.5	-14.7	0.05
2,524.0	0.50	115.81	2,523.9	-12.8	10.5	-15.5	0.04
2,675.0	0.32	121.32	2,674.9	-13.3	11.5	-16.3	0.12
2,803.0	0.48	124.27	2,802.9	-13.7	12.2	-17.0	0.13
2,963.0	0.50	103.17	2,962.9	-14.3	13.5	-17.9	0.11
3,123.0	0.48	100.98	3,122.9	-14.6	14.8	-18.6	0.02
3,282.0	0.64	87.49	3,281.9	-14.7	16.3	-19.2	0.13
3,314.0	0.61	91.12	3,313.9	-14.7	16.7	-19.3	0.16
3,345.0	0.60	106.32	3,344.9	-14.7	17.0	-19.4	0.52
3,398.0	4.19	56.59	3,397.9	-13.7	18.9	-19.1	7.23
3,473.0	5.25	42.02	3,472.6	-9.7	23.5	-16.8	2.12
3,494.0	6.30	79.74	3,493.5	-8.7	25.3	-16.5	18.37
3,588.0	5.91	96.46	3,587.0	-8.4	35.1	-19.3	1.93
3,746.0	3.83	98.13	3,744.4	-10.0	48.5	-25.2	1.32
3,841.0	3.09	96.65	3,839.2	-10.8	54.1	-27.8	0.78
3,916.0	3.09	96.65	3,914.1	-11.2	58.2	-29.5	0.00
3,974.0	2.37	98.38	3,972.0	-11.6	60.9	-30.7	1.25
4,099.0	1.45	104.53	4,097.0	-12.4	65.0	-32.8	0.75
4,224.0	0.54	104.36	4,222.0	-12.9	67.1	-34.0	0.73
4,350.0	0.63	150.73	4,348.0	-13.7	68.0	-35.0	0.37
4,475.0	0.87	150.80	4,472.9	-15.1	68.8	-36.6	0.19
4,601.0	0.91	141.41	4,598.9	-16.7	69.9	-38.5	0.12
4,725.0	1.00	145.23	4,722.9	-18.4	71.1	-40.5	0.09
4,853.0	0.93	150.89	4,850.9	-20.2	72.3	-42.6	0.09
4,980.0	0.78	154.53	4,977.9	-21.9	73.1	-44.4	0.13
5,107.0	0.56	153.42	5,104.9	-23.2	73.8	-45.9	0.17
5,235.0	0.79	143.66	5,232.9	-24.5	74.6	-47.4	0.20
5,363.0	0.80	153.40	5,360.8	-26.0	75.5	-49.1	0.11
5,491.0	0.73	140.59	5,488.8	-27.4	76.4	-50.7	0.14



RECEIVED

AUG 10 2015



WV GEOLOGICAL SURVEY  
MORGANTOWN, WV

EOW Completion Report



**Company:** Antero Resources  
**Project:** Harrison County West Virginia  
**Site:** Winnie/Dawson/Tenmile Pad  
**Well:** Myers Unit 1H  
**Wellbore:** Original Wellpath  
**Design:** As Drilled

**Local Co-ordinate Reference:** Well Myers Unit 1H  
**TVD Reference:** Myers Unit 1H GL 1278' + 25' RKB @ 1303.0usft  
**MD Reference:** Myers Unit 1H GL 1278' + 25' RKB @ 1303.0usft  
**North Reference:** Grid  
**Survey Calculation Method:** Minimum Curvature  
**Database:** Oklahoma District

Survey

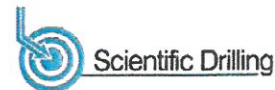
MD (usft)	Inc (°)	Azi (azimuth) (°)	TVD (usft)	N/S (usft)	E/W (usft)	V. Sec (usft)	DLeg (°/100usft)
5,619.0	0.80	142.01	5,616.8	-28.7	77.5	-52.4	0.06
5,779.0	0.60	146.84	5,776.8	-30.3	78.6	-54.2	0.13
5,939.0	0.77	121.48	5,936.8	-31.6	80.0	-55.9	0.21
6,099.0	0.76	120.56	6,096.8	-32.7	81.8	-57.5	0.01
6,258.0	0.69	101.71	6,255.8	-33.4	83.7	-58.8	0.16
6,482.0	0.67	107.93	6,479.8	-34.1	86.3	-60.3	0.03
6,504.0	0.56	148.18	6,501.8	-34.2	86.4	-60.4	1.98
6,568.0	0.45	106.80	6,565.8	-34.6	86.8	-60.9	0.58
6,598.0	0.99	81.07	6,595.8	-34.6	87.2	-61.0	2.05
6,645.0	3.31	350.06	6,642.7	-33.2	87.4	-59.7	7.39
6,689.0	7.86	338.17	6,686.5	-29.1	86.0	-55.5	10.60
<b>Middlesex</b>							
6,692.0	8.17	337.84	6,689.5	-28.7	85.9	-55.1	10.60
6,739.0	13.22	336.05	6,735.6	-20.7	82.4	-46.4	10.77
6,786.0	18.37	334.13	6,780.9	-9.1	77.0	-33.7	11.01
6,833.0	23.53	332.21	6,824.7	5.8	69.4	-17.0	11.07
6,868.0	27.42	329.59	6,856.3	19.0	62.1	-2.2	11.56
<b>Burkett</b>							
6,880.0	28.76	328.85	6,866.9	23.8	59.2	3.3	11.56
6,901.0	31.13	328.64	6,885.1	32.8	53.7	13.6	11.31
<b>Tully</b>							
6,927.0	34.07	328.41	6,907.0	44.7	46.4	27.2	11.31
6,974.0	40.21	327.87	6,944.5	68.8	31.4	54.9	13.08
7,023.0	46.66	328.53	6,980.0	97.4	13.7	87.7	13.20
7,068.0	52.68	329.61	7,009.1	126.9	-3.9	121.2	13.50
7,116.0	57.73	331.36	7,036.5	161.2	-23.3	160.0	10.94
7,162.0	61.83	333.12	7,059.7	196.3	-41.8	199.3	9.51
7,181.0	63.92	334.19	7,068.3	211.5	-49.3	216.0	12.08
<b>Marcellus</b>							
7,209.0	67.01	335.70	7,080.0	234.6	-60.1	241.3	12.08
7,256.0	72.29	337.39	7,096.3	275.0	-77.6	285.3	11.73
7,303.0	77.33	338.93	7,108.6	317.1	-94.5	330.5	11.18
7,326.0	81.11	339.21	7,112.9	338.2	-102.5	353.1	16.48
7,443.0	89.83	340.58	7,122.1	447.6	-142.6	469.6	7.54
7,506.0	89.97	339.83	7,122.2	506.9	-163.9	532.6	1.21
7,600.0	89.43	338.21	7,122.7	594.6	-197.6	626.5	1.82
7,694.0	92.08	342.68	7,121.5	683.2	-229.0	720.5	5.53
7,789.0	91.07	342.14	7,118.9	773.7	-257.7	815.4	1.21
7,883.0	88.62	340.45	7,119.1	862.7	-287.9	909.4	3.17
7,976.0	89.93	340.50	7,120.3	950.3	-318.9	1,002.4	1.41
8,070.0	89.46	341.93	7,120.8	1,039.3	-349.2	1,096.4	1.60
8,164.0	89.19	340.27	7,121.9	1,128.3	-379.6	1,190.4	1.79
8,258.0	90.67	341.37	7,122.0	1,217.0	-410.5	1,284.4	1.96
8,352.0	90.67	342.64	7,120.9	1,306.4	-439.6	1,378.4	1.35
8,446.0	91.04	342.72	7,119.5	1,396.2	-467.5	1,472.3	0.40

AUG 10 2015



WV GEOLOGICAL SURVEY  
MORGANTOWN, WV

EOW Completion Report



**Company:** Antero Resources  
**Project:** Harrison County West Virginia  
**Site:** Winnie/Dawson/Tenmile Pad  
**Well:** Myers Unit 1H  
**Wellbore:** Original Wellpath  
**Design:** As Drilled

**Local Co-ordinate Reference:** Well Myers Unit 1H  
**TVD Reference:** Myers Unit 1H GL 1278' + 25' RKB @ 1303.0usft  
**MD Reference:** Myers Unit 1H GL 1278' + 25' RKB @ 1303.0usft  
**North Reference:** Grid  
**Survey Calculation Method:** Minimum Curvature  
**Database:** Oklahoma District

**Survey**

MD (usft)	Inc (°)	Azi (azimuth) (°)	TVD (usft)	N/S (usft)	E/W (usft)	V. Sec (usft)	DLeg (°/100usft)
8,541.0	90.44	341.75	7,118.3	1,486.6	-496.5	1,567.3	1.20
8,634.0	88.76	342.05	7,119.0	1,575.0	-525.4	1,660.3	1.84
8,728.0	89.02	340.72	7,120.8	1,664.1	-555.4	1,754.3	1.44
8,822.0	89.97	339.42	7,121.6	1,752.4	-587.5	1,848.2	1.71
8,916.0	89.80	340.35	7,121.8	1,840.7	-619.8	1,942.2	1.01
9,010.0	89.50	341.94	7,122.4	1,929.7	-650.2	2,036.2	1.72
9,104.0	89.36	340.80	7,123.3	2,018.7	-680.2	2,130.2	1.22
9,198.0	90.40	340.66	7,123.5	2,107.5	-711.2	2,224.2	1.12
9,292.0	89.13	341.46	7,123.9	2,196.4	-741.7	2,318.2	1.60
9,386.0	89.56	340.87	7,125.0	2,285.3	-772.1	2,412.2	0.78
9,480.0	89.60	339.70	7,125.7	2,373.8	-803.8	2,506.2	1.25
9,574.0	89.97	340.98	7,126.0	2,462.3	-835.4	2,600.2	1.42
9,668.0	89.26	342.24	7,126.6	2,551.5	-865.1	2,694.2	1.54
9,762.0	89.36	341.40	7,127.8	2,640.8	-894.4	2,788.1	0.90
9,853.0	89.46	341.32	7,128.7	2,727.0	-923.5	2,879.1	0.14
9,944.0	89.13	340.21	7,129.8	2,813.0	-953.4	2,970.1	1.27
10,035.0	89.09	342.22	7,131.2	2,899.1	-982.7	3,061.1	2.21
10,126.0	88.96	342.81	7,132.8	2,985.9	-1,010.1	3,152.1	0.66
10,216.0	90.57	342.86	7,133.2	3,071.9	-1,036.6	3,242.0	1.79
10,307.0	89.36	341.56	7,133.2	3,158.5	-1,064.4	3,333.0	1.95
10,398.0	88.83	342.15	7,134.7	3,245.0	-1,092.8	3,424.0	0.87
10,490.0	88.86	340.74	7,136.5	3,332.2	-1,122.0	3,516.0	1.53
10,581.0	88.82	340.14	7,138.4	3,417.9	-1,152.5	3,606.9	0.66
10,672.0	88.56	338.68	7,140.4	3,503.1	-1,184.5	3,697.9	1.63
10,763.0	91.21	343.30	7,140.6	3,589.1	-1,214.1	3,788.8	5.85
10,854.0	88.42	341.12	7,140.9	3,675.7	-1,241.9	3,879.8	3.89
10,949.0	88.49	339.79	7,143.5	3,765.2	-1,273.7	3,974.8	1.40
11,043.0	89.53	339.59	7,145.1	3,853.3	-1,306.3	4,068.7	1.13
11,137.0	88.02	339.57	7,147.1	3,941.4	-1,339.1	4,162.7	1.61
11,231.0	89.03	339.84	7,149.5	4,029.5	-1,371.7	4,256.6	1.11
11,325.0	89.66	340.41	7,150.6	4,117.9	-1,403.7	4,350.6	0.90
11,419.0	89.13	339.44	7,151.6	4,206.2	-1,435.9	4,444.6	1.18
11,513.0	88.59	339.32	7,153.5	4,294.2	-1,469.0	4,538.5	0.59
11,607.0	89.50	340.70	7,155.0	4,382.5	-1,501.1	4,632.5	1.76
11,701.0	89.33	343.36	7,156.0	4,471.9	-1,530.1	4,726.4	2.84
11,796.0	88.99	341.65	7,157.4	4,562.5	-1,558.7	4,821.4	1.84
11,890.0	89.26	343.78	7,158.8	4,652.2	-1,586.6	4,915.3	2.28
11,984.0	88.99	343.73	7,160.3	4,742.5	-1,612.9	5,009.2	0.29
12,079.0	88.86	342.24	7,162.0	4,833.3	-1,640.7	5,104.1	1.57
12,173.0	88.69	340.89	7,164.0	4,922.4	-1,670.4	5,198.1	1.45
12,266.0	88.46	341.11	7,166.4	5,010.4	-1,700.7	5,291.1	0.34
12,360.0	89.30	339.60	7,168.2	5,098.9	-1,732.3	5,385.1	1.84
12,454.0	88.69	339.31	7,169.8	5,186.9	-1,765.3	5,479.0	0.72
12,548.0	89.36	338.36	7,171.4	5,274.5	-1,799.2	5,572.9	1.24



AUG 10 2015



**WV GEOLOGICAL SURVEY  
MORGANTOWN, WV**

EOW Completion Report



**Company:** Antero Resources  
**Project:** Harrison County West Virginia  
**Site:** Winnie/Dawson/Tenmile Pad  
**Well:** Myers Unit 1H  
**Wellbore:** Original Wellpath  
**Design:** As Drilled

**Local Co-ordinate Reference:** Well Myers Unit 1H  
**TVD Reference:** Myers Unit 1H GL 1278' + 25' RKB @ 1303.0usft  
**MD Reference:** Myers Unit 1H GL 1278' + 25' RKB @ 1303.0usft  
**North Reference:** Grid  
**Survey Calculation Method:** Minimum Curvature  
**Database:** Oklahoma District

**Survey**

MD (usft)	Inc (°)	Azi (azimuth) (°)	TVD (usft)	N/S (usft)	E/W (usft)	V. Sec (usft)	DLeg (°/100usft)
12,642.0	90.50	341.48	7,171.6	5,362.8	-1,831.5	5,666.9	3.53
12,737.0	89.97	341.53	7,171.2	5,452.9	-1,861.6	5,761.9	0.56
12,831.0	90.60	342.11	7,170.7	5,542.2	-1,890.9	5,855.9	0.91
12,925.0	89.70	341.32	7,170.5	5,631.4	-1,920.4	5,949.9	1.27
13,019.0	89.66	341.31	7,171.0	5,720.5	-1,950.5	6,043.9	0.04
13,113.0	87.52	339.10	7,173.3	5,808.9	-1,982.4	6,137.8	3.27
13,207.0	89.93	341.87	7,175.4	5,897.5	-2,013.7	6,231.8	3.91
13,301.0	89.36	344.48	7,176.0	5,987.4	-2,041.0	6,325.7	2.84
13,396.0	86.04	342.40	7,179.8	6,078.4	-2,068.0	6,420.5	4.12
13,489.0	86.03	340.77	7,186.2	6,166.4	-2,097.3	6,513.3	1.75
13,583.0	86.72	338.61	7,192.2	6,254.4	-2,129.9	6,607.1	2.41
13,678.0	86.65	337.58	7,197.6	6,342.4	-2,165.2	6,701.8	1.08
13,777.0	86.64	337.58	7,203.4	6,433.7	-2,202.9	6,800.4	0.01
13,866.0	87.95	340.73	7,207.6	6,516.8	-2,234.6	6,889.3	3.83
13,960.0	87.42	341.58	7,211.4	6,605.7	-2,264.9	6,983.2	1.07
14,054.0	88.02	342.12	7,215.2	6,694.9	-2,294.2	7,077.1	0.86
14,147.0	89.36	342.95	7,217.3	6,783.6	-2,322.1	7,170.1	1.69
14,241.0	88.22	341.70	7,219.3	6,873.2	-2,350.6	7,264.0	1.80
14,335.0	90.00	342.22	7,220.7	6,962.5	-2,379.7	7,358.0	1.97
14,429.0	87.78	338.73	7,222.6	7,051.1	-2,411.1	7,451.9	4.40
14,523.0	88.82	340.16	7,225.4	7,139.1	-2,444.1	7,545.9	1.88
14,617.0	88.76	340.22	7,227.3	7,227.5	-2,475.9	7,639.8	0.09
14,712.0	89.43	341.37	7,228.8	7,317.2	-2,507.2	7,734.8	1.40
14,806.0	89.63	341.66	7,229.6	7,406.3	-2,537.0	7,828.8	0.37
14,900.0	88.49	340.88	7,231.2	7,495.3	-2,567.2	7,922.8	1.47
14,994.0	90.44	342.22	7,232.0	7,584.5	-2,596.9	8,016.8	2.52
15,088.0	90.00	341.31	7,231.7	7,673.8	-2,626.3	8,110.8	1.08
15,182.0	90.57	340.71	7,231.2	7,762.7	-2,656.9	8,204.8	0.88
15,276.0	90.90	343.93	7,230.0	7,852.2	-2,685.5	8,298.7	3.44
15,370.0	89.60	342.80	7,229.6	7,942.3	-2,712.4	8,392.6	1.83
15,464.0	88.73	340.01	7,231.0	8,031.3	-2,742.3	8,486.6	3.11
15,558.0	89.25	339.89	7,232.6	8,119.6	-2,774.6	8,580.6	0.57
15,652.0	88.99	338.49	7,234.1	8,207.5	-2,807.9	8,674.5	1.51
15,746.0	88.49	340.51	7,236.1	8,295.5	-2,840.9	8,768.5	2.21
15,840.0	89.06	340.89	7,238.1	8,384.2	-2,871.9	8,862.4	0.73
15,934.0	89.26	341.62	7,239.5	8,473.2	-2,902.1	8,956.4	0.81
16,028.0	89.03	341.02	7,240.9	8,562.2	-2,932.2	9,050.4	0.68
16,122.0	89.23	341.33	7,242.3	8,651.2	-2,962.6	9,144.4	0.39
16,216.0	89.29	341.80	7,243.6	8,740.4	-2,992.3	9,238.4	0.50
16,320.0	89.46	341.80	7,244.7	8,839.2	-3,024.8	9,342.4	0.16
16,372.0	89.20	341.40	7,245.3	8,888.5	-3,041.2	9,394.4	0.92

AUG 10 2015



WV GEOLOGICAL SURVEY  
MORGANTOWN, WV

EOW Completion Report



**Company:** Antero Resources  
**Project:** Harrison County West Virginia  
**Site:** Winnie/Dawson/Tenmile Pad  
**Well:** Myers Unit 1H  
**Wellbore:** Original Wellpath  
**Design:** As Drilled

**Local Co-ordinate Reference:** Well Myers Unit 1H  
**TVD Reference:** Myers Unit 1H GL 1278' + 25' RKB @ 1303.0usft  
**MD Reference:** Myers Unit 1H GL 1278' + 25' RKB @ 1303.0usft  
**North Reference:** Grid  
**Survey Calculation Method:** Minimum Curvature  
**Database:** Oklahoma District

Design Annotations

Measured Depth (usft)	Vertical Depth (usft)	Local Coordinates		Comment
		+N/-S (usft)	+E/-W (usft)	
6,689.0	6,686.5	-29.1	86.0	Middlesex
6,868.0	6,856.3	19.0	62.1	Burkett
6,901.0	6,885.1	32.8	53.7	Tully
7,181.0	7,068.3	211.5	-49.3	Marcellus

Checked By: \_\_\_\_\_ Approved By: \_\_\_\_\_ Date: \_\_\_\_\_