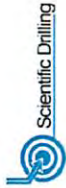




Antero Resources  
 Norris Unit 2H  
 Harrison County West Virginia  
 Northing: 14254517.38  
 Easting: 1764860.01  
 As Drilled



Scientific Drilling  
 421 South Eagle Lane  
 Oklahoma City Oklahoma  
 405-787-3663

WELL DETAILS: Norris Unit 2H

+N/-S	+E/-W	Northing	Ground Level	1376.0	Longitude	Slot
0.0	0.0	14254517.38	Existing	1764860.01	39° 15' 12.394"N 80° 33' 37.449"W	

REFERENCE INFORMATION

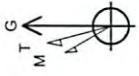
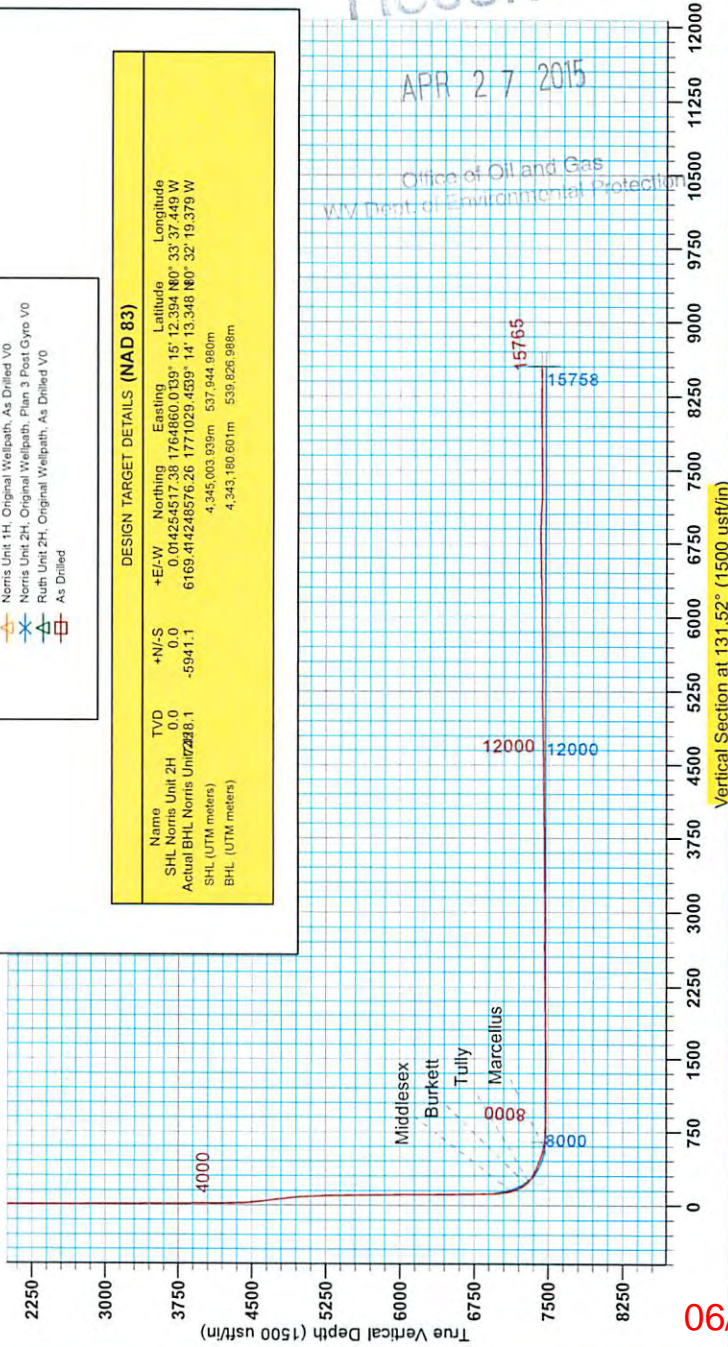
Coordinates (N/E) Reference: Well Norris Unit 2H, Grid North  
 Section (V/S) Reference: Slot = (D/GA, D/E),  
 Mississippi Meridian, Normal Unit 2H, 1376° 15' 12.394" N, 80° 33' 37.449" W

LEGEND

- Norris Unit 1H, Original Wellpath, As Drilled VO
- Norris Unit 2H, Original Wellpath, Plan 3 Post Gyro VO
- Rush Unit 2H, Original Wellpath, As Drilled VO
- As Drilled

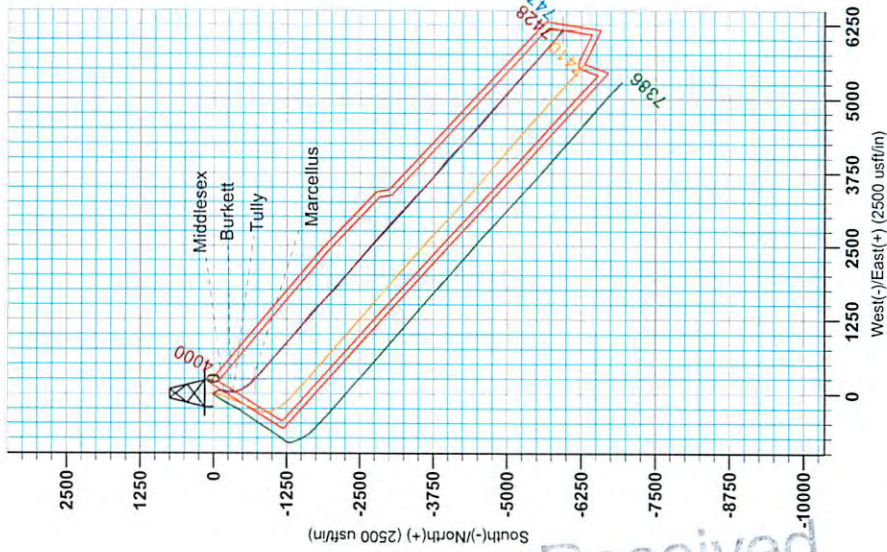
DESIGN TARGET DETAILS (NAD 83)

Name	TVD	+N/-S	+E/-W	Northing	Easting	Latitude	Longitude
SHL Norris Unit 2H	0.0	0.0	0.0	14254517.38	1764860.0139	39° 15' 12.394" N	80° 33' 37.449" W
Actual BHL Norris Unit 2H	238.1	-594.1.1		6169.41246576.26	1771029.4539	14° 13.348" N	80° 32' 19.379" W
SHL (UTM meters)				4,345,003.698m	537,944.980m		
BHL (UTM meters)				4,343,180.601m	539,826.988m		



To convert Magnetic North to Grid, Subtract 8.86°  
 To convert True North to Grid, Subtract 0.28°

Magnetic Field  
 Strength: 52368.8nT  
 Dip Angle: 66.65°  
 Date: 6/20/2013  
 Model: IGR2010





# Antero Resources

Harrison County West Virginia  
Ruth/Norris/Nellie/Ford Pad  
Norris Unit 2H  
Original Wellpath

Design: As Drilled

## EOW Completion Report

30 August, 2013

Received

APR 27 2015

Office of Oil and Gas  
WV Dept. of Environmental Protection



06/12/2015





EOW Completion Report



<b>Company:</b>	Antero Resources	<b>Local Co-ordinate Reference:</b>	Well Norris Unit 2H
<b>Project:</b>	Harrison County West Virginia	<b>TVD Reference:</b>	Norris Unit 2H GL 1376' + 24' KB @ 1400.0usft (C
<b>Site:</b>	Ruth/Norris/Nellie/Ford Pad	<b>MD Reference:</b>	Norris Unit 2H GL 1376' + 24' KB @ 1400.0usft (C
<b>Well:</b>	Norris Unit 2H	<b>North Reference:</b>	Grid
<b>Wellbore:</b>	Original Wellpath	<b>Survey Calculation Method:</b>	Minimum Curvature
<b>Design:</b>	As Drilled	<b>Database:</b>	Oklahoma District

Received

<b>Project</b>	Harrison County West Virginia, Harrison County, USA		
<b>Map System:</b>	Universal Transverse Mercator (US Survey Fee	<b>System Datum:</b>	Mean Sea Level
<b>Geo Datum:</b>	NAD 1927 (NADCON CONUS)		
<b>Map Zone:</b>	Zone 17N (84 W to 78 W)		

APR 27 2015

Office of Oil and Gas  
WV Dept. of Environmental Protection

<b>Site</b>	Ruth/Norris/Nellie/Ford Pad				
<b>Site Position:</b>	<b>Northing:</b>	14,254,530.66 usft	<b>Latitude:</b>	39° 15' 12.526 N	
<b>From:</b> Map	<b>Easting:</b>	1,764,845.07 usft	<b>Longitude:</b>	80° 33' 37.638 W	
<b>Position Uncertainty:</b>	2.0 usft	<b>Slot Radius:</b>	13-3/16"	<b>Grid Convergence:</b>	0.28 °

<b>Well</b>	Norris Unit 2H, Marcellus					
<b>Well Position</b>	<b>+N/-S</b>	0.0 usft	<b>Northing:</b>	14,254,517.38 usft	<b>Latitude:</b>	39° 15' 12.394 N
	<b>+E/-W</b>	0.0 usft	<b>Easting:</b>	1,764,860.01 usft	<b>Longitude:</b>	80° 33' 37.449 W
<b>Position Uncertainty</b>	2.0 usft	<b>Wellhead Elevation:</b>	1,400.0 usft	<b>Ground Level:</b>	1,376.0 usft	

<b>Wellbore</b>	Original Wellpath
-----------------	-------------------

Magnetics	Model Name	Sample Date	Declination (°)	Dip Angle (°)	Field Strength (nT)
	IGRF2010	6/20/2013	-8.58	66.85	52,369

<b>Design</b>	As Drilled
---------------	------------

<b>Audit Notes:</b>					
<b>Version:</b>	1.0	<b>Phase:</b>	ACTUAL	<b>Tie On Depth:</b>	0.0
<b>Vertical Section:</b>	<b>Depth From (TVD) (usft)</b>	<b>+N/-S (usft)</b>	<b>+E/-W (usft)</b>	<b>Direction (°)</b>	
	0.0	0.0	0.0	131.52	

Survey Program	Date	8/30/2013		
From (usft)	To (usft)	Survey (Wellbore)	Tool Name	Description
100.0	2,530.2	Survey #2 Def Gyro to Int (Original Wellpa	SDI Standard Keeper	Scientific Drilling Intl. Standard Wireline Keeper
2,630.2	4,261.9	Survey #3 Def Gyro 2 (Original Wellpath)	SDI Standard Keeper	Scientific Drilling Intl. Standard Wireline Keeper
4,361.0	6,879.0	Survey #4 Def Gyro to KOP (Original Well	SDI Standard Keeper	Scientific Drilling Intl. Standard Wireline Keeper
6,900.5	15,765.0	Survey #5 MWD (Original Wellpath)	SDI MWD	Scientific Drilling Intl. MWD - Standard ver 1.0.1

MD (usft)	Inc (°)	Azi (azimuth) (°)	TVD (usft)	N/S (usft)	E/W (usft)	V. Sec (usft)	DLeg (°/100usft)
0.0	0.00	0.00	0.0	0.0	0.0	0.0	0.00
100.0	0.41	168.83	100.0	-0.4	0.1	0.3	0.41
200.0	0.32	180.98	200.0	-1.0	0.1	0.8	0.12
300.0	0.15	164.99	300.0	-1.4	0.2	1.0	0.18
400.0	0.34	146.38	400.0	-1.8	0.4	1.4	0.20
500.0	0.34	171.50	500.0	-2.3	0.6	2.0	0.15
600.0	0.35	169.56	600.0	-2.9	0.7	2.4	0.02
700.0	0.13	166.82	700.0	-3.3	0.7	2.8	0.22
800.0	0.32	158.35	800.0	-3.7	0.9	3.1	0.19





EOW Completion Report



Received

APR 27 2013

Office of Oil and Environmental Protection

<b>Company:</b>	Antero Resources	<b>Local Co-ordinate Reference:</b>	Well Norris Unit 2H
<b>Project:</b>	Harrison County West Virginia	<b>TVD Reference:</b>	Norris Unit 2H GL 1376' + 24' KB @ 1400.0usft (C
<b>Site:</b>	Ruth/Norris/Nellie/Ford Pad	<b>MD Reference:</b>	Norris Unit 2H GL 1376' + 24' KB @ 1400.0usft (C
<b>Well:</b>	Norris Unit 2H	<b>North Reference:</b>	Grid
<b>Wellbore:</b>	Original Wellpath	<b>Survey Calculation Method:</b>	Minimum Curvature
<b>Design:</b>	As Drilled	<b>Database:</b>	Oklahoma District

Survey

MD (usft)	Inc (°)	Azi (azimuth) (°)	TVD (usft)	N/S (usft)	E/W (usft)	V. Sec (usft)	DLeg (°/100usft)
900.0	0.37	159.37	900.0	-4.2	1.1	3.6	0.05
1,000.0	0.20	184.74	1,000.0	-4.7	1.2	4.0	0.21
1,100.0	0.16	128.22	1,100.0	-5.0	1.3	4.3	0.17
1,200.0	0.26	161.72	1,200.0	-5.3	1.5	4.6	0.15
1,300.0	0.34	168.51	1,300.0	-5.8	1.6	5.0	0.09
1,400.0	0.19	124.12	1,400.0	-6.2	1.8	5.4	0.24
1,500.0	0.34	185.16	1,500.0	-6.6	1.9	5.8	0.30
1,600.0	0.30	203.74	1,600.0	-7.1	1.8	6.0	0.11
1,700.0	0.29	177.74	1,700.0	-7.6	1.7	6.3	0.13
1,800.0	0.37	200.79	1,800.0	-8.1	1.6	6.6	0.15
1,900.0	0.18	256.55	1,900.0	-8.5	1.3	6.6	0.31
2,000.0	0.44	203.40	2,000.0	-8.9	1.0	6.6	0.36
2,100.0	0.17	199.80	2,100.0	-9.4	0.8	6.8	0.27
2,200.0	0.46	201.95	2,200.0	-9.9	0.6	7.0	0.29
2,300.0	0.26	191.35	2,300.0	-10.5	0.4	7.2	0.21
2,400.0	0.14	148.78	2,400.0	-10.8	0.4	7.5	0.18
2,500.0	0.18	186.16	2,500.0	-11.1	0.5	7.7	0.11
2,530.2	0.31	179.05	2,530.2	-11.2	0.5	7.8	0.44
2,630.2	0.43	127.99	2,630.2	-11.7	0.8	8.3	0.34
2,730.2	0.41	113.19	2,730.2	-12.1	1.4	9.0	0.11
2,830.2	0.57	120.09	2,830.2	-12.4	2.2	9.9	0.17
2,930.2	0.54	115.98	2,930.1	-12.9	3.0	10.8	0.05
3,030.2	0.72	109.02	3,030.1	-13.3	4.0	11.8	0.20
3,130.2	0.51	125.62	3,130.1	-13.8	5.0	12.9	0.27
3,230.2	0.36	99.10	3,230.1	-14.1	5.7	13.6	0.25
3,330.2	0.35	129.76	3,330.1	-14.3	6.2	14.1	0.19
3,430.2	0.26	104.61	3,430.1	-14.6	6.6	14.6	0.16
3,530.2	0.25	139.21	3,530.1	-14.8	7.0	15.1	0.15
3,630.2	0.18	108.71	3,630.1	-15.0	7.3	15.4	0.13
3,730.2	0.52	90.77	3,730.1	-15.1	7.9	15.9	0.35
3,830.2	0.32	78.54	3,830.1	-15.0	8.6	16.4	0.22
3,930.2	0.36	114.27	3,930.1	-15.1	9.2	16.9	0.21
4,030.2	0.36	116.18	4,030.1	-15.4	9.8	17.5	0.01
4,130.2	0.46	102.46	4,130.1	-15.6	10.4	18.1	0.14
4,230.2	0.53	117.41	4,230.1	-15.9	11.2	18.9	0.15
4,261.9	0.49	119.14	4,261.9	-16.0	11.5	19.2	0.13
4,361.0	2.04	152.03	4,360.9	-17.8	12.7	21.3	1.67
4,461.0	4.74	159.61	4,460.7	-23.2	15.0	26.6	2.73
4,561.0	6.79	148.75	4,560.2	-32.2	19.5	35.9	2.31
4,661.0	7.81	135.94	4,659.4	-42.1	27.3	48.3	1.91
4,761.0	7.02	135.11	4,758.6	-51.3	36.3	61.2	0.80
4,861.0	7.53	154.19	4,857.8	-61.5	43.5	73.3	2.46
4,961.0	6.25	166.34	4,957.1	-72.7	47.6	83.9	1.93
5,061.0	5.03	178.79	5,056.6	-82.4	49.0	91.3	1.72



Received EOW Completion Report



**Company:** Antero Resources  
**Project:** Harrison County West Virginia  
**Site:** Ruth/Norris/Nellie/Ford Pad  
**Well:** Norris Unit 2H  
**Wellbore:** Original Wellpath  
**Design:** As Drilled

**Local Co-ordinate Reference:** Well Norris Unit 2H  
**TVD Reference:** Norris Unit 2H GL 1376' + 24' KB @ 1400.0usft (C  
**MD Reference:** Norris Unit 2H GL 1376' + 24' KB @ 1400.0usft (C  
**North Reference:** Grid  
**Survey Calculation Method:** Minimum Curvature  
**Database:** Oklahoma District

APR 27 2015  
Office of Oil and Gas  
WV Dept. of Environmental

Survey

MD (usft)	Inc (°)	Azi (azimuth) (°)	TVD (usft)	N/S (usft)	E/W (usft)	V. Sec (usft)	DLeg (°/100usft)
5,161.0	2.58	187.02	5,156.3	-89.0	48.8	95.5	2.50
5,261.0	2.36	185.41	5,256.2	-93.3	48.3	98.0	0.23
5,361.0	1.25	184.37	5,356.2	-96.4	48.1	99.9	1.11
5,461.0	0.99	188.67	5,456.2	-98.4	47.8	101.0	0.27
5,561.0	1.69	184.74	5,556.1	-100.7	47.6	102.4	0.71
5,661.0	1.82	184.67	5,656.1	-103.8	47.3	104.2	0.13
5,761.0	1.69	178.89	5,756.1	-106.8	47.2	106.2	0.22
5,861.0	1.48	176.66	5,856.0	-109.6	47.3	108.1	0.22
5,961.0	0.74	190.71	5,956.0	-111.5	47.3	109.3	0.78
6,061.0	0.52	207.81	6,056.0	-112.5	47.0	109.8	0.29
6,161.0	0.37	219.88	6,156.0	-113.2	46.5	109.9	0.18
6,261.0	0.40	207.74	6,256.0	-113.7	46.2	110.0	0.09
6,361.0	0.51	171.48	6,356.0	-114.5	46.1	110.4	0.30
6,461.0	0.61	166.03	6,456.0	-115.5	46.3	111.2	0.11
6,561.0	0.79	153.71	6,556.0	-116.6	46.7	112.3	0.23
6,661.0	1.06	157.59	6,656.0	-118.1	47.4	113.7	0.28
6,761.0	1.33	156.26	6,755.9	-120.0	48.2	115.6	0.27
6,861.0	1.43	149.24	6,855.9	-122.1	49.3	117.8	0.20
6,879.0	1.46	146.76	6,873.9	-122.5	49.5	118.3	0.39
6,900.5	1.46	146.76	6,895.4	-123.0	49.8	118.8	0.00
6,917.0	1.16	136.67	6,911.9	-123.3	50.1	119.2	2.29
6,948.0	2.54	188.13	6,942.9	-124.2	50.2	119.9	6.55
6,979.0	6.83	196.28	6,973.8	-126.6	49.6	121.0	13.97
7,011.0	11.30	192.53	7,005.4	-131.5	48.3	123.4	14.08
7,042.0	15.03	194.42	7,035.5	-138.4	46.7	126.7	12.11
7,074.0	18.66	196.10	7,066.2	-147.3	44.2	130.8	11.44
7,105.0	23.01	194.15	7,095.1	-157.9	41.4	135.7	14.21
7,136.0	27.12	191.68	7,123.2	-170.7	38.5	142.0	13.68
7,143.0	27.97	191.14	7,129.4	-173.9	37.8	143.6	12.69
<b>Middlesex</b>							
7,168.0	31.03	189.43	7,151.2	-186.0	35.6	150.0	12.69
7,199.0	35.19	187.65	7,177.1	-202.8	33.1	159.2	13.78
7,231.0	39.22	186.59	7,202.6	-222.0	30.7	170.2	12.75
7,262.0	43.11	185.55	7,225.9	-242.3	28.6	182.0	12.74
7,293.0	47.47	184.41	7,247.7	-264.2	26.7	195.1	14.30
7,325.0	51.38	181.76	7,268.6	-288.5	25.4	210.2	13.74
7,337.0	52.77	180.64	7,275.9	-297.9	25.2	216.4	13.71
<b>Burkett</b>							
7,356.0	54.98	178.94	7,287.1	-313.3	25.3	226.6	13.71
7,383.0	58.10	175.40	7,302.0	-335.8	26.4	242.3	15.92
<b>Tully</b>							
7,388.0	58.69	174.77	7,304.6	-340.0	26.8	245.4	15.92
7,419.0	61.68	170.53	7,320.1	-366.7	30.2	265.7	15.29
7,450.0	63.39	166.07	7,334.4	-393.6	35.8	287.7	13.90
7,482.0	64.37	160.33	7,348.5	-421.1	44.1	312.1	16.39





EOW Completion Report



Received

APR 27 2015

Office of Oil and Gas  
WV Dept. of Environmental Protection

<b>Company:</b>	Antero Resources	<b>Local Co-ordinate Reference:</b>	Well Norris Unit 2H
<b>Project:</b>	Harrison County West Virginia	<b>TVD Reference:</b>	Norris Unit 2H GL 1376' + 24' KB @ 1400.0usft (C
<b>Site:</b>	Ruth/Norris/Nellie/Ford Pad	<b>MD Reference:</b>	Norris Unit 2H GL 1376' + 24' KB @ 1400.0usft (C
<b>Well:</b>	Norris Unit 2H	<b>North Reference:</b>	Grid
<b>Wellbore:</b>	Original Wellpath	<b>Survey Calculation Method:</b>	Minimum Curvature
<b>Design:</b>	As Drilled	<b>Database:</b>	Oklahoma District

Survey

MD (usft)	Inc (°)	Azi (azimuth) (°)	TVD (usft)	N/S (usft)	E/W (usft)	V. Sec (usft)	DLeg (°/100usft)
7,513.0	65.64	155.30	7,361.6	-447.1	54.7	337.3	15.26
7,545.0	67.04	152.36	7,374.4	-473.4	67.6	364.4	9.48
7,576.0	68.61	149.83	7,386.1	-498.5	81.5	391.5	9.10
7,608.0	69.56	148.29	7,397.5	-524.1	96.9	420.0	5.39
7,639.0	69.72	146.07	7,408.3	-548.6	112.6	448.0	6.73
7,670.0	70.80	144.01	7,418.8	-572.5	129.3	476.3	7.16
7,702.0	71.77	141.41	7,429.1	-596.6	147.7	506.1	8.27
7,733.0	74.07	139.20	7,438.2	-619.4	166.6	535.3	10.07
7,765.0	76.77	137.52	7,446.2	-642.5	187.2	566.1	9.85
7,796.0	78.23	136.86	7,452.9	-664.7	207.8	596.2	5.15
7,797.0	78.31	136.86	7,453.1	-665.4	208.5	597.2	7.56
<b>Marcellus</b>							
7,827.0	80.57	137.01	7,458.6	-687.0	228.6	626.5	7.56
7,859.0	84.86	135.01	7,462.7	-709.8	250.6	658.2	14.77
7,890.0	87.48	134.42	7,464.8	-731.6	272.6	689.0	8.66
7,921.0	86.23	134.12	7,466.5	-753.2	294.8	720.0	4.15
7,953.0	85.93	133.75	7,468.7	-775.3	317.8	751.9	1.49
7,984.0	85.97	133.56	7,470.8	-796.7	340.1	782.8	0.62
8,075.0	89.70	132.56	7,474.3	-858.7	406.6	873.6	4.24
8,169.0	90.27	132.13	7,474.3	-922.1	476.0	967.6	0.76
8,263.0	90.67	131.69	7,473.5	-984.8	546.0	1,061.6	0.63
8,357.0	91.38	131.84	7,471.8	-1,047.4	616.1	1,155.6	0.77
8,451.0	89.29	130.98	7,471.3	-1,109.6	686.6	1,249.6	2.40
8,546.0	88.99	130.87	7,472.7	-1,171.8	758.4	1,344.6	0.34
8,640.0	89.19	131.02	7,474.2	-1,233.4	829.3	1,438.6	0.27
8,734.0	89.30	130.75	7,475.5	-1,295.0	900.4	1,532.6	0.31
8,828.0	90.94	130.99	7,475.3	-1,356.5	971.5	1,626.5	1.76
8,922.0	90.20	129.98	7,474.3	-1,417.5	1,043.0	1,720.5	1.33
9,016.0	91.08	129.91	7,473.3	-1,477.8	1,115.0	1,814.5	0.94
9,110.0	90.00	127.21	7,472.4	-1,536.4	1,188.5	1,908.3	3.09
9,204.0	90.60	129.07	7,471.9	-1,594.5	1,262.5	2,002.2	2.08
9,298.0	91.44	132.11	7,470.2	-1,655.6	1,333.8	2,096.1	3.35
9,392.0	91.54	133.16	7,467.8	-1,719.3	1,402.9	2,190.1	1.12
9,486.0	91.68	133.77	7,465.1	-1,783.9	1,471.1	2,284.0	0.67
9,580.0	90.37	133.75	7,463.5	-1,848.9	1,539.0	2,377.9	1.39
9,674.0	90.54	134.11	7,462.7	-1,914.1	1,606.7	2,471.8	0.42
9,769.0	90.81	135.54	7,461.6	-1,981.1	1,674.1	2,566.7	1.53
9,863.0	89.33	135.37	7,461.5	-2,048.1	1,740.0	2,660.4	1.58
9,957.0	89.97	133.50	7,462.0	-2,113.9	1,807.1	2,754.3	2.10
10,051.0	89.23	129.96	7,462.7	-2,176.4	1,877.3	2,848.3	3.85
10,145.0	89.29	129.53	7,463.9	-2,236.5	1,949.6	2,942.2	0.46
10,239.0	92.62	129.49	7,462.4	-2,296.3	2,022.1	3,036.1	3.54
10,334.0	91.68	128.61	7,458.8	-2,356.1	2,095.8	3,131.0	1.35
10,428.0	91.51	127.23	7,456.2	-2,413.9	2,169.9	3,224.8	1.48
10,522.0	89.43	131.20	7,455.4	-2,473.3	2,242.7	3,318.7	4.77





EOW Completion Report



Received

APR 27 2015

Office of Oil and Gas  
WV Dept. of Environmental

**Company:** Antero Resources  
**Project:** Harrison County West Virginia  
**Site:** Ruth/Norris/Nellie/Ford Pad  
**Well:** Norris Unit 2H  
**Wellbore:** Original Wellpath  
**Design:** As Drilled

**Local Co-ordinate Reference:** Well Norris Unit 2H  
**TVD Reference:** Norris Unit 2H GL 1376' + 24' KB @ 1400.0usft (C  
**MD Reference:** Norris Unit 2H GL 1376' + 24' KB @ 1400.0usft (C  
**North Reference:** Grid  
**Survey Calculation Method:** Minimum Curvature  
**Database:** Oklahoma District

Survey

MD (usft)	Inc (°)	Azi (azimuth) (°)	TVD (usft)	N/S (usft)	E/W (usft)	V. Sec (usft)	DLeg (°/100usft)
10,617.0	89.43	130.91	7,456.3	-2,535.7	2,314.3	3,413.7	0.31
10,711.0	89.83	131.18	7,457.0	-2,597.4	2,385.2	3,507.6	0.51
10,806.0	90.17	131.51	7,457.0	-2,660.1	2,456.6	3,602.6	0.50
10,900.0	90.27	131.29	7,456.6	-2,722.3	2,527.1	3,696.6	0.26
10,994.0	90.30	130.78	7,456.1	-2,784.0	2,598.0	3,790.6	0.54
11,088.0	90.27	129.94	7,455.7	-2,844.9	2,669.6	3,884.6	0.89
11,182.0	90.91	129.95	7,454.7	-2,905.2	2,741.7	3,978.6	0.68
11,276.0	90.57	131.75	7,453.5	-2,966.7	2,812.8	4,072.6	1.95
11,371.0	90.71	131.52	7,452.4	-3,029.8	2,883.8	4,167.6	0.28
11,465.0	90.92	130.80	7,451.1	-3,091.7	2,954.5	4,261.5	0.80
11,559.0	90.34	133.24	7,450.0	-3,154.6	3,024.3	4,355.5	2.67
11,653.0	90.74	132.48	7,449.2	-3,218.5	3,093.2	4,449.5	0.91
11,747.0	90.60	132.76	7,448.1	-3,282.2	3,162.4	4,543.5	0.33
11,841.0	90.71	132.30	7,447.0	-3,345.7	3,231.7	4,637.4	0.50
11,935.0	90.77	132.18	7,445.8	-3,408.9	3,301.3	4,731.4	0.14
12,030.0	90.81	132.01	7,444.5	-3,472.6	3,371.7	4,826.4	0.18
12,124.0	91.44	132.80	7,442.6	-3,536.0	3,441.1	4,920.4	1.07
12,218.0	90.54	132.83	7,441.0	-3,599.8	3,510.1	5,014.3	0.96
12,312.0	90.91	132.21	7,439.8	-3,663.4	3,579.4	5,108.3	0.77
12,406.0	90.10	131.47	7,439.0	-3,726.1	3,649.4	5,202.3	1.17
12,500.0	89.80	127.54	7,439.1	-3,785.8	3,721.9	5,296.2	4.19
12,595.0	89.66	127.37	7,439.5	-3,843.6	3,797.3	5,391.0	0.23
12,689.0	88.89	126.23	7,440.7	-3,899.9	3,872.6	5,484.7	1.46
12,783.0	90.64	128.67	7,441.1	-3,957.1	3,947.2	5,578.4	3.19
12,876.0	91.58	133.27	7,439.3	-4,018.0	4,017.4	5,671.4	5.05
12,971.0	90.04	134.23	7,437.9	-4,083.7	4,086.0	5,766.3	1.91
13,064.0	91.04	135.52	7,437.1	-4,149.3	4,151.9	5,859.1	1.75
13,158.0	90.50	135.20	7,435.8	-4,216.2	4,217.9	5,952.9	0.67
13,252.0	90.66	134.40	7,434.8	-4,282.4	4,284.6	6,046.7	0.87
13,346.0	90.71	135.55	7,433.7	-4,348.9	4,351.1	6,140.6	1.22
13,440.0	91.78	135.35	7,431.7	-4,415.8	4,417.0	6,234.3	1.16
13,534.0	90.40	134.39	7,429.9	-4,482.1	4,483.6	6,328.1	1.79
13,629.0	91.71	131.59	7,428.1	-4,546.9	4,553.1	6,423.1	3.25
13,723.0	90.30	130.01	7,426.5	-4,608.3	4,624.3	6,517.1	2.25
13,817.0	91.17	129.79	7,425.3	-4,668.6	4,696.4	6,611.0	0.95
13,911.0	91.21	130.35	7,423.3	-4,729.1	4,768.3	6,705.0	0.60
14,005.0	90.10	129.89	7,422.3	-4,789.7	4,840.2	6,798.9	1.28
14,099.0	90.34	130.92	7,421.9	-4,850.6	4,911.7	6,892.9	1.13
14,193.0	88.09	131.41	7,423.2	-4,912.5	4,982.5	6,986.9	2.45
14,287.0	87.45	130.98	7,426.8	-4,974.3	5,053.2	7,080.8	0.82
14,381.0	87.45	129.94	7,431.0	-5,035.3	5,124.6	7,174.7	1.11
14,475.0	88.79	129.14	7,434.1	-5,095.1	5,197.1	7,268.6	1.66
14,569.0	89.97	129.60	7,435.1	-5,154.7	5,269.7	7,362.5	1.35
14,663.0	91.24	130.71	7,434.1	-5,215.3	5,341.6	7,456.5	1.79



EOW Completion Report



<b>Company:</b>	Antero Resources	<b>Local Co-ordinate Reference:</b>	Well Norris Unit 2H
<b>Project:</b>	Harrison County West Virginia	<b>TVD Reference:</b>	Norris Unit 2H GL 1376' + 24' KB @ 1400.0usft (C
<b>Site:</b>	Ruth/Norris/Nellie/Ford Pad	<b>MD Reference:</b>	Norris Unit 2H GL 1376' + 24' KB @ 1400.0usft (C
<b>Well:</b>	Norris Unit 2H	<b>North Reference:</b>	Grid
<b>Wellbore:</b>	Original Wellpath	<b>Survey Calculation Method:</b>	Minimum Curvature
<b>Design:</b>	As Drilled	<b>Database:</b>	Oklahoma District

Survey

MD (usft)	Inc (°)	Azi (azimuth) (°)	TVD (usft)	N/S (usft)	E/W (usft)	V. Sec (usft)	DLeg (°/100usft)
14,757.0	90.54	132.07	7,432.7	-5,277.4	5,412.1	7,550.5	1.63
14,851.0	90.84	134.05	7,431.5	-5,341.6	5,480.8	7,644.4	2.13
14,945.0	91.51	135.55	7,429.6	-5,407.8	5,547.4	7,738.2	1.75
15,036.0	88.90	133.87	7,429.3	-5,471.8	5,612.1	7,829.1	3.41
15,129.0	90.30	132.57	7,429.9	-5,535.5	5,679.9	7,922.0	2.05
15,223.0	89.25	130.89	7,430.3	-5,598.1	5,750.0	8,016.0	2.11
15,317.0	90.64	131.08	7,430.4	-5,659.7	5,821.0	8,110.0	1.49
15,411.0	90.44	130.39	7,429.5	-5,721.1	5,892.2	8,204.0	0.76
15,505.0	89.09	128.32	7,429.9	-5,780.7	5,964.9	8,297.9	2.63
15,599.0	90.67	128.37	7,430.1	-5,839.0	6,038.6	8,391.8	1.68
15,693.0	90.77	128.00	7,428.9	-5,897.1	6,112.5	8,485.6	0.41
15,718.0	90.57	127.64	7,428.6	-5,912.4	6,132.2	8,510.6	1.65
15,765.0	90.57	127.64	7,428.1	-5,941.1	6,169.4	8,557.5	0.00

Design Annotations

Measured Depth (usft)	Vertical Depth (usft)	Local Coordinates		Comment
		+N/-S (usft)	+E/-W (usft)	
7,143.0	7,129.4	-173.9	37.8	Middlesex
7,337.0	7,275.9	-297.9	25.2	Burkett
7,383.0	7,302.0	-335.8	26.4	Tully
7,797.0	7,453.1	-665.4	208.5	Marcellus

Checked By: \_\_\_\_\_ Approved By: \_\_\_\_\_ Date: \_\_\_\_\_

Received

APR 27 2015

Office of Oil and Gas  
WV Dept. of Environmental Protection