

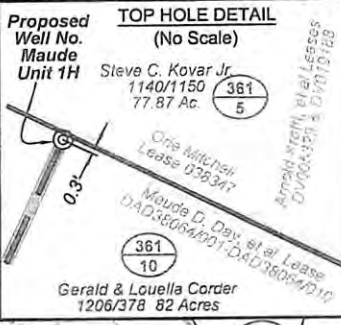
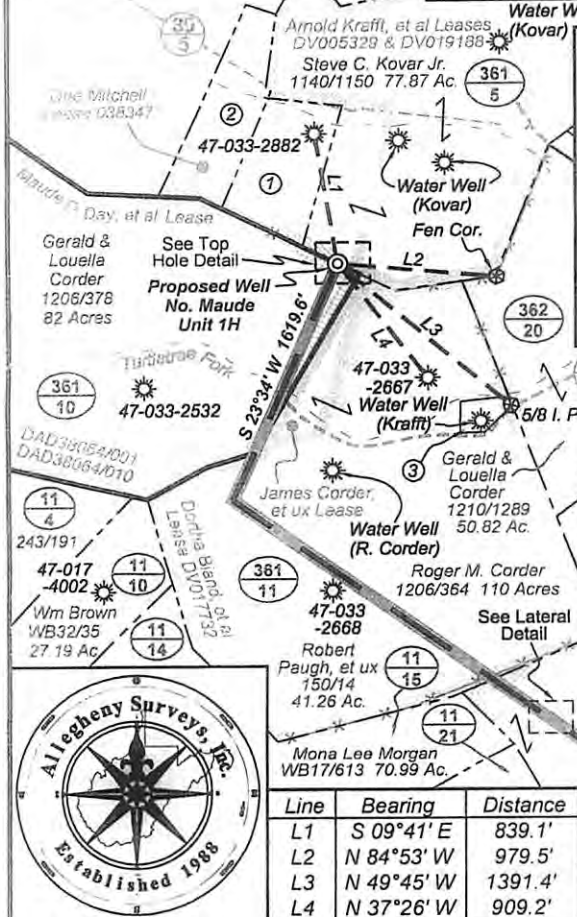
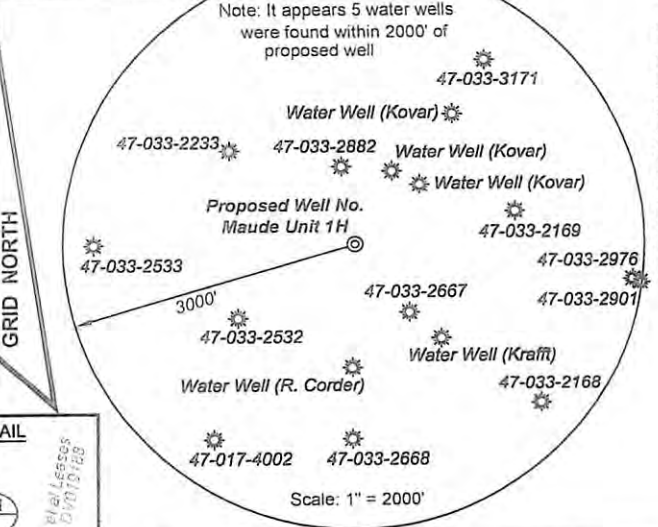
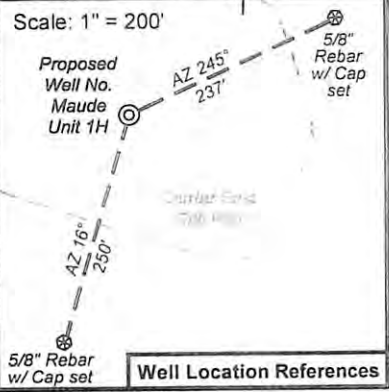
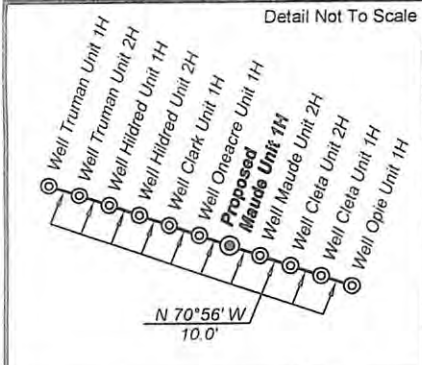
**Antero Resources
Well No. Maude Unit 1H
Antero Resources
Appalachian Corporation**

Bottom Hole
7.5' Spot

(⊕) Denotes location
of well on
United States
topographic maps

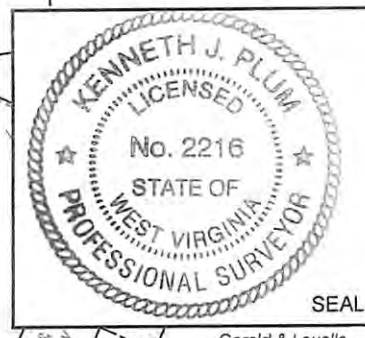
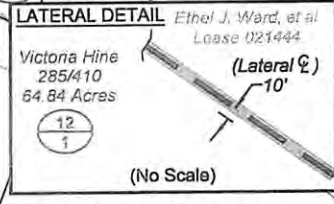
3,508' to Top Hole
TOP HOLE LATITUDE 39 - 15 - 00
BOTTOM HOLE LATITUDE 39 - 12 - 30

TOP HOLE LONGITUDE 80 - 32 - 30
BOTTOM HOLE LONGITUDE 80 - 30 - 00



I, the undersigned, hereby certify that this plat is correct to the best of my knowledge and belief and shows all the information required by law and the regulations issued and prescribed by the Department of Environmental Protection.

Kenneth J. Plum
Kenneth J. Plum, P.S. 2216



Line	Bearing	Distance
L1	S 09°41' E	839.1'
L2	N 84°53' W	979.5'
L3	N 49°45' W	1391.4'
L4	N 37°26' W	909.2'

Notes:
West Virginia Coordinate System of 1927, North Zone based upon Differential GPS Measurements.
Well No. Maude Unit 1H Top Hole coordinates are
N: 264,842.78 Latitude: 39°13'20.44"
E: 1,701,497.76 Longitude: 80°33'13.10"
Bottom Hole coordinates are
N: 258,576.61 Latitude: 39°12'19.20"
E: 1,707,547.77 Longitude: 80°31'55.31"
UTM Zone 17, NAD 1983
Top Hole Coordinates: Bottom Hole Coordinates:
N: 4,341,555.619m N: 4,339,677.362m
E: 538,545.664m E: 540,420.652m
Plat orientation and corner and well references are based upon the grid north meridian.
Well location references are based upon the magnetic meridian.

- Legend**
- ⊕ Proposed gas well
 - ⊙ Found corner, as noted
 - Surface boundary (approx.)
 - Existing Road
 - Interior surface tracts (approx.)
 - Creek or Drain
 - Existing Fenceline

Tax Map 361 Parcels

Par	Owner	DB/Pg	Acres
1 4	Lucille Devericks	WB167/23	9.84
2 3	Lucille Devericks	WB167/23	9.70
3 11.1	Lorena Krafft, et al	FOB100/347	1.25

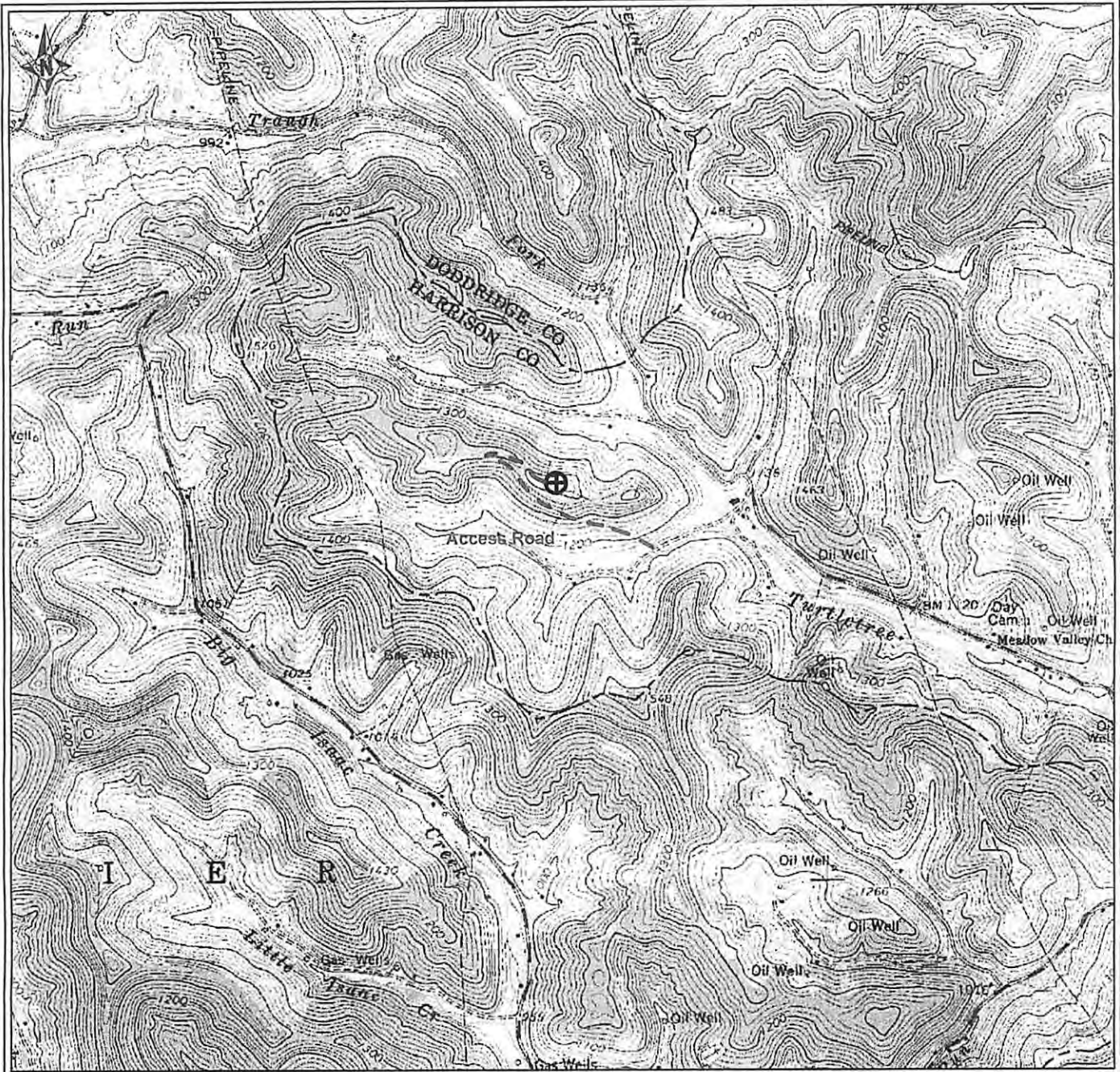
FILE NO: 71-36-U-12
DRAWING NO: 71-12 Maude 1H Well Plat
SCALE: 1" = 1200'
MINIMUM DEGREE OF ACCURACY:
Submeter
PROVEN SOURCE OF ELEVATION:
WVDOT, Bridgeport, WV

STATE OF WEST VIRGINIA
DEPARTMENT OF ENVIRONMENTAL PROTECTION
OFFICE OF OIL AND GAS

DATE: September 28 20 12
OPERATOR'S WELL NO. Maude Unit 1H
API WELL NO: 47 - 033 - 5705 H6A
STATE COUNTY PERMIT

WELL TYPE: OIL GAS LIQUID INJECTION WASTE DISPOSAL
(IF GAS) PRODUCTION: STORAGE DEEP SHALLOW
LOCATION: ELEVATION: 1405' WATERSHED: Turtletree Fork of Tenmile Creek QUADRANGLE: Big Isaac
DISTRICT: Union Oral Eugene Davis & Kay Seckman COUNTY: Harrison
SURFACE OWNER: Gerald & Louella Corder DAD38553 DAD38064/010 ACREAGE: 82
DAD38064/001 62; 105; 1.0
ROYALTY OWNER: Maude D. Day, et al; Dortha Bland, et al; James Corder, et ux LEASE NO: DV017732; 021444 ACREAGE: 147; 105; 6.5; 75
PROPOSED WORK: DRILL CONVERT DRILL DEEPER FRACTURE OR STIMULATE PLUG OFF OLD FORMATION
 PERFORATE NEW FORMATION OTHER PHYSICAL CHANGE IN WELL (SPECIFY) TVD 7,700'
 PLUG AND ABANDON CLEAN OUT AND REPLUG TARGET FORMATION: Marcellus Shale ESTIMATED DEPTH: MD 18,600'
WELL OPERATOR: Antero Resources Appalachian Corporation DESIGNATED AGENT: Dianna Stamper - CT Corporation System
ADDRESS: 1625 17th Street ADDRESS: 5400 D Big Tyler Road
Denver, CO 80202 Charleston, WV 25313

01/11/2013



PETRA 6/6/2012 11:56:26 AM

Antero Resources Corporation

Appalachian Basin

Maude Unit 1H

Harrison County



REMARKS
 QUADRANGLE: BIG ISSAC
 WATERSHED: TURTLE TREE FORK OF
 TENMILE CREEK
 DISTRICT: UNION

June 6, 2012