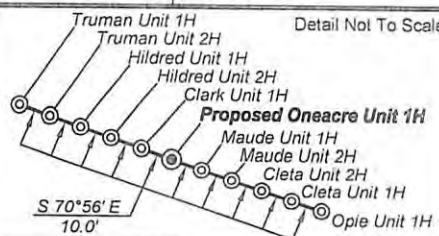


Antero Resources
Well No. Oneacre Unit 1H
Antero Resources
Appalachian Corporation



3,518' to Top Hole

LATITUDE 39 - 15 - 00

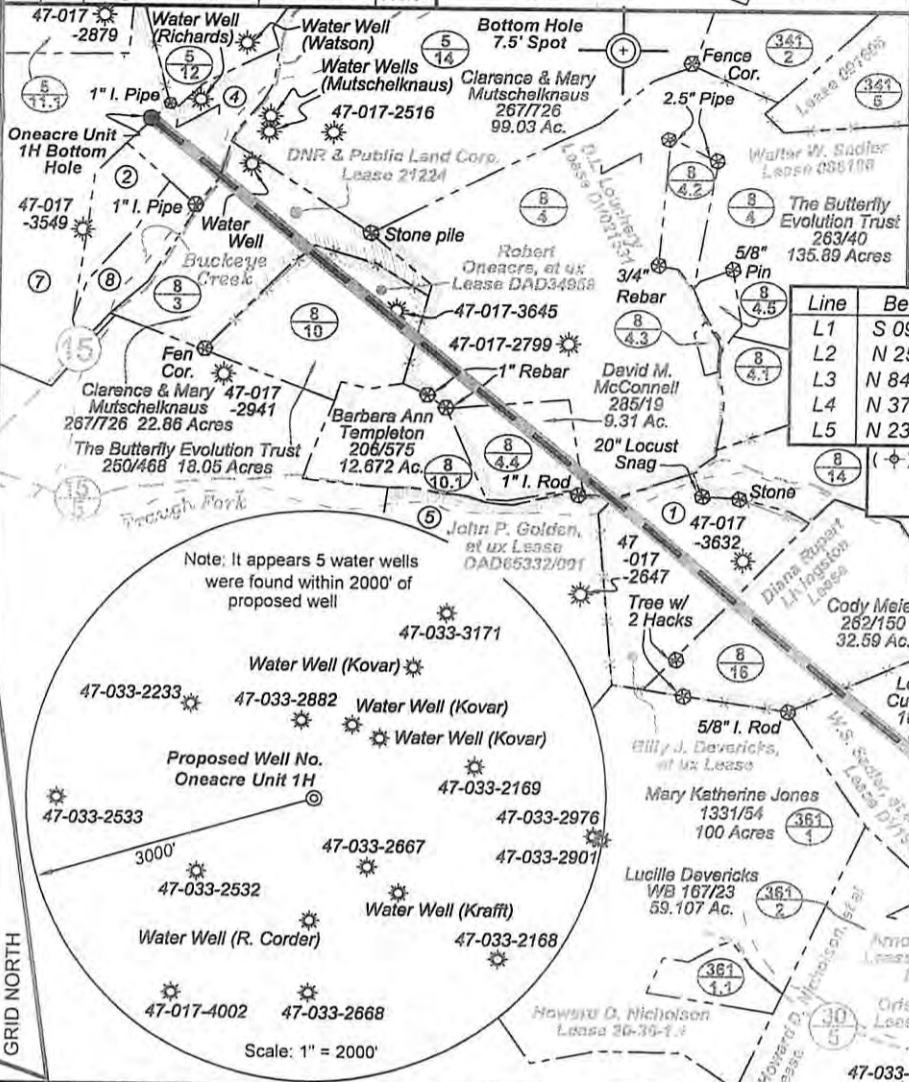
LONGITUDE 80 - 32 - 30

Notes:
West Virginia Coordinate System of 1927, North Zone based upon Differential GPS Measurements.
 Well No. Oneacre Unit 1H Top Hole coordinates are
 N: 264,846.05 Latitude: 39°13'20.47"
 E: 1,701,488.31 Longitude: 80°33'13.22"
 Bottom Hole coordinates are
 N: 271,965.19 Latitude: 39°14'30.12"
 E: 1,695,448.17 Longitude: 80°34'31.05"
UTM Zone 17, NAD 1983

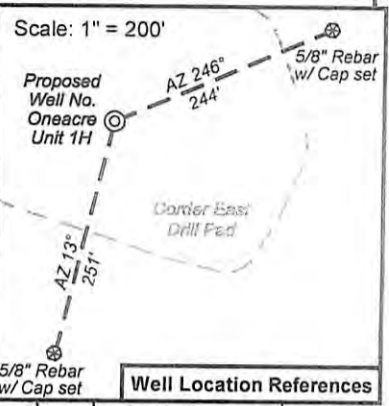
Top Hole Coordinates: N: 4,341,556.567m E: 538,542.769m
 Bottom Hole Coordinates: N: 4,343,694.726m E: 536,666.448m
 Plat orientation and corner and well references are based upon the grid north meridian.
 Well location references are based upon the magnetic meridian.

Tax Map 361 Parcels

Par	Owner	DB/Pg	Acres
9	Lucille Devericks	WB167/23	9.84
10	Lucille Devericks	WB167/23	9.70
11	Roger M. Corder	1206/364	110.0

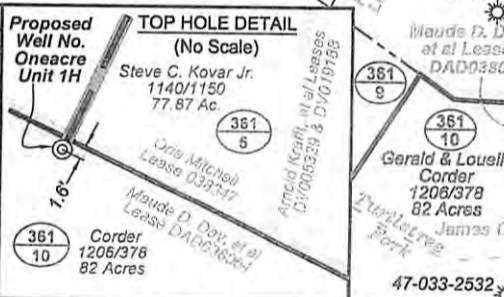


Line	Bearing	Distance
L1	S 09°05' E	834.4'
L2	N 25°12' E	1688.3'
L3	N 84°45' W	989.2'
L4	N 37°47' W	917.5'
L5	N 23°15' E	1297.3'



Tax Map 8 Parcels

Par	Owner	DB/Pg	Acres
1	Lucille Devericks	WB42/159	23.0
2	Don & Charlotte Henrey	294/83	5.55
3	Wm & Bertha Bland	257/389	0.46
4	Darrell R. Richards	281/289	9.35
5	Mark E. Golden	250/596	35.53
6	Wm. & Leslie Westfall	244/355	0.91
7	Don & Charlotte Henrey	294/81	69.57
8	Mikasa T. Ash	263/294	4.88



I, the undersigned, hereby certify that this plat is correct to the best of my knowledge and belief and shows all the information required by law and the regulations issued and prescribed by the Department of Environmental Protection.

Kenneth J. Plum
Kenneth J. Plum, P.S. 2216



FILE NO: 132-30-G-12
 DRAWING NO: 132-12 Oneacre 1H Well
 SCALE: 1" = 1200'
 MINIMUM DEGREE OF ACCURACY: Submeter
 PROVEN SOURCE OF ELEVATION: WVDOT, Bridgeport, WV

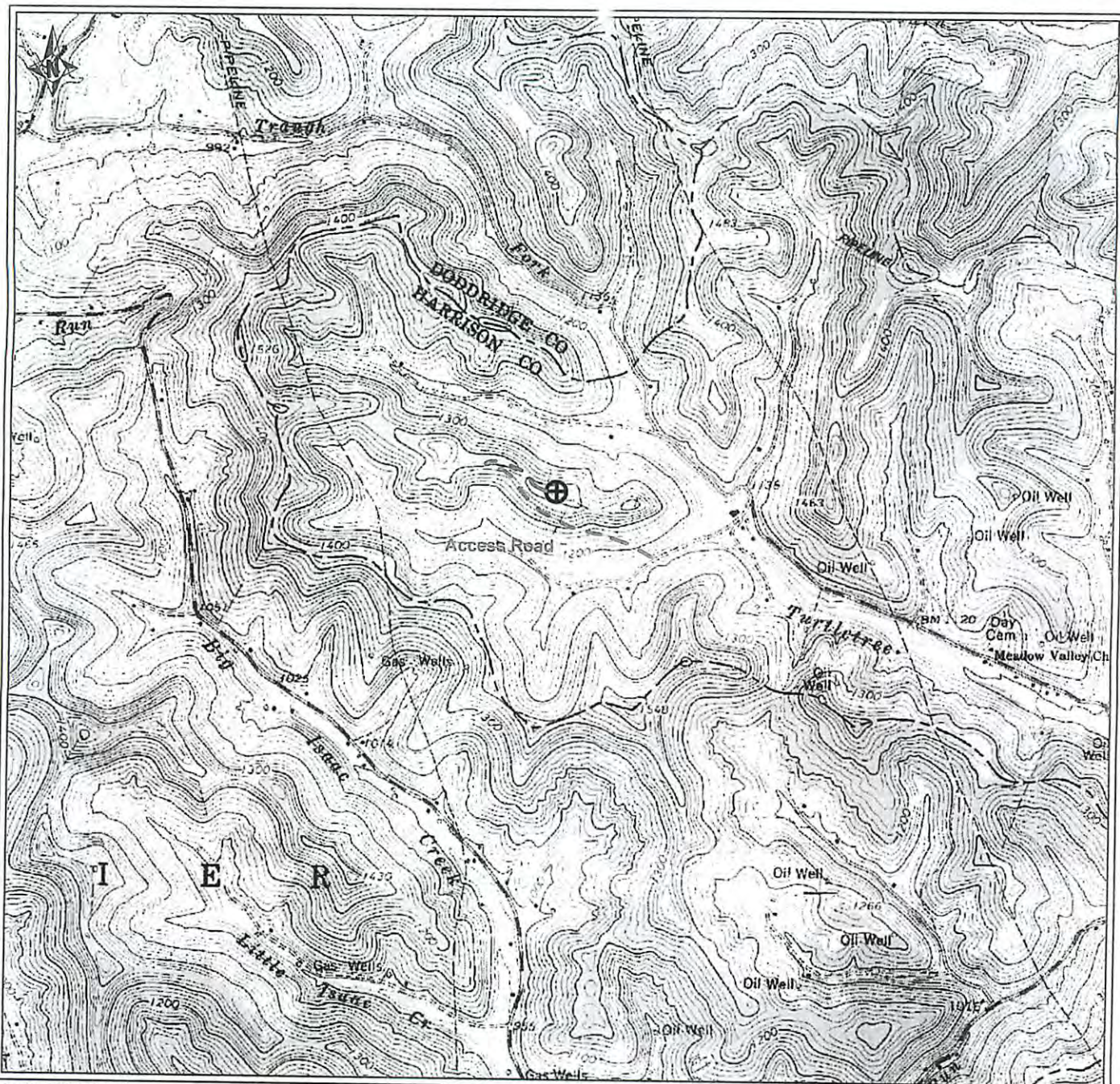
STATE OF WEST VIRGINIA
DEPARTMENT OF ENVIRONMENTAL PROTECTION
OFFICE OF OIL AND GAS

DATE: October 15 20 12
 OPERATOR'S WELL NO. Oneacre Unit 1H
 API WELL NO: 47 - 033 - 05708 H6A
 STATE COUNTY PERMIT

WELL TYPE: OIL GAS LIQUID INJECTION WASTE DISPOSAL
 (IF GAS) PRODUCTION: STORAGE DEEP SHALLOW
 LOCATION: ELEVATION: 1405' WATERSHED: Turtletree Fork of Tenmile Creek QUADRANGLE: Big Isaac
 DISTRICT: Union Diana Rupert Livingston COUNTY: Harrison
 SURFACE OWNER: Gerald & Louella Corder Orphia Stephens; DNR & Public Land Corp. DAD65332/001 ACREAGE: 82 172; 35.5; 54
 ROYALTY OWNER: Maude D. Day, et al; Oris Mitchell; Arnold Krafft, et al; W. S. Sadler, et al LEASE NO: DAD038064; 038347; 21224 ACREAGE: 147; 48.69; 79; 130
 PROPOSED WORK: DRILL CONVERT DRILL DEEPER FRACTURE OR STIMULATE PLUG OFF OLD FORMATION
 PERFORATE NEW FORMATION OTHER PHYSICAL CHANGE IN WELL (SPECIFY) _____ TVD 7,700'
 PLUG AND ABANDON CLEAN OUT AND REPLUG TARGET FORMATION: Marcellus Shale ESTIMATED DEPTH: MD 17,200'

WELL OPERATOR: Antero Resources Appalachian Corporation DESIGNATED AGENT: Dianna Stamper - CT Corporation System
 ADDRESS: 1625 17th Street ADDRESS: 5400 D Big Tyler Road
 Denver, CO 80202 Charleston, WV 25313

01/25/2013



PETRA 6/6/2012 12:01:17 PM

33-05708

Antero Resources Corporation

Appalachian Basin

Oneacre Unit 1H

Harrison County



REMARKS
 QUADRANGLE: BIG ISSAC
 WATERSHED: TURTLE TREE FORK OF
 TENMILE CREEK
 DISTRICT: UNION

June 6, 2012