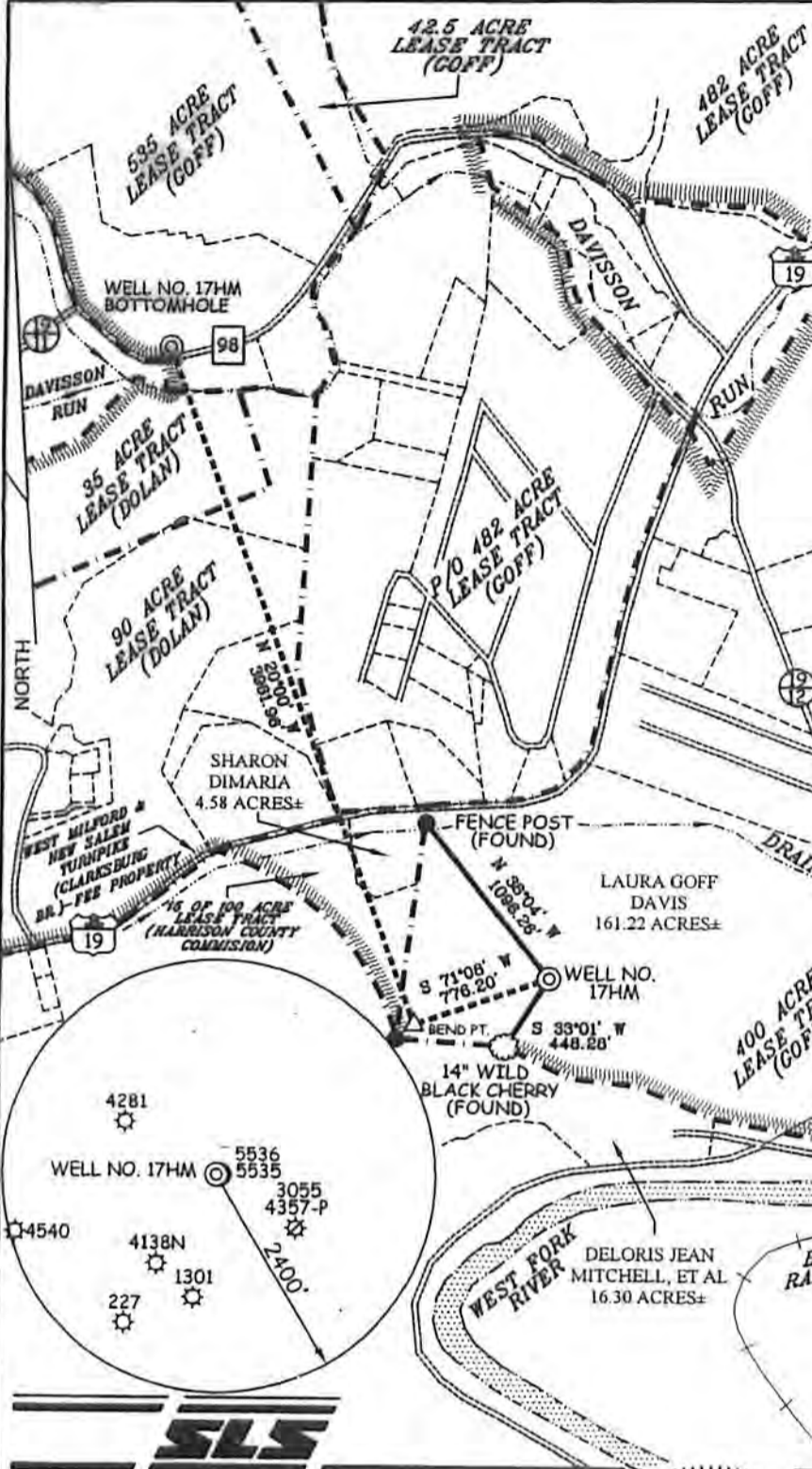


LATITUDE 39°17'30"

# GOFF LEASE WELL NO. 17HM

LONGITUDE 80°22'30"

11.941'

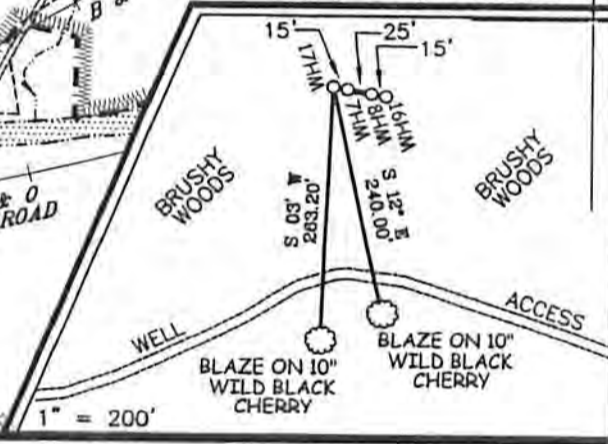


<b>WELL NO. 17HM TOP HOLE</b> STATE PLANE COORDINATES (NORTH ZONE NAD 27) N. 277,610 E. 1,751,963 TOP HOLE (NAD 27) LAT=(N) 39°15'32.0" LONG=(W) 80°22'33.5" TOP HOLE (NAD 83) LAT=(N) 39°15'32.3" LONG=(W) 80°22'32.8" TOP HOLE UTM (NAD 83) (N) 4,345,701 (E) 553,858	<b>WELL NO. 17HM BEND POINT</b> STATE PLANE COORDINATES (NORTH ZONE NAD 27) N. 277,359 E. 1,751,229 BEND POINT (NAD 27) LAT=(N) 39°15'29.4" LONG=(W) 80°22'42.8" BEND POINT (NAD 83) LAT=(N) 39°16'29.7" LONG=(W) 80°22'42.1" BEND POINT UTM (NAD 83) (N) 4,345,621 (E) 553,633
<b>WELL NO. 17HM BOTTOM HOLE</b> STATE PLANE COORDINATES (NORTH ZONE NAD 27) N. 281,100 E. 1,749,867 BOTTOM HOLE (NAD 27) LAT=(N) 39°16'06.3" LONG=(W) 80°23'00.5" BOTTOM HOLE (NAD 83) LAT=(N) 39°16'06.6" LONG=(W) 80°23'59.9" BOTTOM HOLE UTM (NAD 83) (N) 4,346,754 (E) 553,199	

### NOTES ON SURVEY

- TIES TO WELLS AND CORNERS ARE BASED ON GRID NORTH FOR THE WV STATE PLANE COORDINATE SYSTEM NORTH ZONE NAD '27.
- TIES TO REFERENCES ARE BASED ON MAGNETIC NORTH 03-08-10.
- LEASE BOUNDARY SHOWN HEREON TAKEN FROM DEED BOOK 70 PAGE 152 AND ADJOINING DEEDS.
- SURFACE OWNER AND ADJOINER INFORMATION TAKEN FROM THE ASSESSOR AND COUNTY CLERK RECORDS OF HARRISON COUNTY IN JULY, 2012.
- WELL LAT./LONG. (NAD'27) ESTABLISHED BY DOPS (SUBMETER MAPPING GRADE).

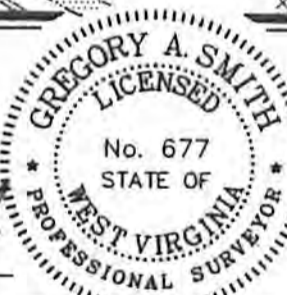
### REFERENCES



I THE UNDERSIGNED, HEREBY CERTIFY THAT THIS PLAT IS CORRECT TO THE BEST OF MY KNOWLEDGE AND BELIEF AND SHOWS ALL THE INFORMATION REQUIRED BY LAW AND THE REGULATIONS ISSUED AND PRESCRIBED BY THE DIVISION OF ENVIRONMENTAL PROTECTION.

P.S. 677

*Gregory A. Smith*



(+) DENOTES LOCATION OF WELL ON UNITED STATES TOPOGRAPHIC MAPS.  
 DATE OCTOBER 8, 20 12  
 OPERATORS WELL NO. GOFF #17HM  
 API WELL NO. 47-033-05718H6A  
 STATE COUNTY PERMIT

MINIMUM DEGREE OF ACCURACY 1/200 FILE NO. 7129P17HM(297-57)  
 PROVEN SOURCE OF ELEVATION DGPS (SUBMETER MAPPING GRADE) SCALE 1" = 1,000'

STATE OF WEST VIRGINIA  
 DIVISION OF ENVIRONMENTAL PROTECTION  
 OFFICE OF OIL AND GAS

WELL TYPE: OIL  GAS  LIQUID INJECTION  WASTE DISPOSAL  IF "GAS" PRODUCTION  STORAGE  DEEP  SHALLOW

LOCATION: ELEVATION 1,158' WATERSHED WEST FORK RIVER  
 DISTRICT CLARK COUNTY HARRISON QUADRANGLE WOLF SUMMIT 7.5'

SURFACE OWNER LAURA GOFF DAVIS ACREAGE 161.22±  
 ROYALTY OWNER GOFF HEIRS, ET AL & STATE OF WV ACREAGE 400, 482, 15 OF 100±, 90, 35, & 535±

PROPOSED WORK: LEASE NO. \_\_\_\_\_  
 DRILL  CONVERT  DRILL DEEPER  REDRILL  FRACTURE OR STIMULATE  PLUG OFF OLD  
 FORMATION  PERFORATE NEW FORMATION  PLUG AND ABANDON  CLEAN OUT AND REPLUG  OTHER

PHYSICAL CHANGE IN WELL (SPECIFY) \_\_\_\_\_ TARGET FORMATION MARCELLUS  
 ESTIMATED DEPTH 6,920'

WELL OPERATOR PDC MOUNTAINEER, LLC DESIGNATED AGENT JAMIE HAGA  
 ADDRESS 120 GENESIS BOULEVARD BRIDGEPORT, WV 26330 ADDRESS 120 GENESIS BOULEVARD BRIDGEPORT, WV 26330

COUNTY NAME PERMIT