

State of West Virginia
Department of Environmental Protection - Office of Oil and Gas
Well Operator's Report of Well Work

API 47 - 033 - 05724 County Harrison District Union
Quad West Milford Pad Name Sperry 2 Pad Field/Pool Name —
Farm name Sperry, Clarence Well Number Isaac Unit 1H
Operator (as registered with the OOG) Antero Resources Corporation
Address 1615 Wynkoop Street City Denver State CO Zip 80202

As Drilled location NAD 83/UTM Attach an as-drilled plat, profile view, and deviation survey
Top hole Northing 4,343,329.891m Easting 546,060.740m
Landing Point of Curve Northing 4,343,255.10m Easting 546,502.87m
Bottom Hole Northing 4,340,441.213m Easting 547,427.322m

Elevation (ft) 1168' GL Type of Well New Existing Type of Report Interim Final
Permit Type Deviated Horizontal Horizontal 6A Vertical Depth Type Deep Shallow
Type of Operation Convert Deepen Drill Plug Back Redrilling Rework Stimulate
Well Type Brine Disposal CBM Gas Oil Secondary Recovery Solution Mining Storage Other _____
Type of Completion Single Multiple Fluids Produced Brine Gas NGL Oil Other _____
Drilled with Cable Rotary

Drilling Media Surface hole Air Mud Fresh Water Intermediate hole Air Mud Fresh Water Brine
Production hole Air Mud Fresh Water Brine
Mud Type(s) and Additive(s)
Air - Foam & 4% KCL
Mud - Polymer

Date permit issued 3/11/2013 Date drilling commenced 7/31/2013 Date drilling ceased 9/10/2013
Date completion activities began 3/2/2014 Date completion activities ceased 4/13/2014
Verbal plugging (Y/N) N/A Date permission granted N/A Granted by N/A

Please note: Operator is required to submit a plugging application within 5 days of verbal permission to plug

Freshwater depth(s) ft 80' Open mine(s) (Y/N) depths N
Salt water depth(s) ft 2101' Void(s) encountered (Y/N) depths N
Coal depth(s) ft 797' Cavern(s) encountered (Y/N) depths N
Is coal being mined in area (Y/N) N

MAY 26 2015

WV Department of
Environmental Protection

Reviewed by:
AL 5/27/15
06/05/2015

API 47-033 - 05724 Farm name Sperry, Clarence Well number Isaac Unit 1H

CASING STRINGS	Hole Size	Casing Size	Depth	New or Used	Grade wt/ft	Basket Depth(s)	Did cement circulate (Y/N) * Provide details below*
Conductor	24"	20"	80'	New	133#/J-55	N/A	Y
Surface	17-1/2"	13-3/8"	338'	New	48#/H-40	N/A	Y
Coal							
Intermediate 1	12-1/4"	9-5/8"	2562'	New	36#/J-55	N/A	Y
Intermediate 2							
Intermediate 3							
Production	8-3/4", 8-1/2"	5-1/2"	17,359'	New	20#/P-110	N/A	Y
Tubing		2-3/8"	7345'		4.7#/N-80	N/A	
Packer type and depth set		N/A					

Comment Details _____

CEMENT DATA	Class/Type of Cement	Number of Sacks	Slurry wt (ppg)	Yield (ft ³ /sks)	Volume (ft ³)	Cement Top (MD)	WOC (hrs)
Conductor	Class A	284 sx	15.6	1.18	77 Cu. Ft.	0'	8 hrs
Surface	Class A	432 sx	15.6	1.18	235 Cu. Ft.	0'	8 hrs
Coal							
Intermediate 1	Class A	988 sx	15.6	1.18	802 Cu. Ft.	0'	8 hrs
Intermediate 2							
Intermediate 3							
Production	Class H	931 sx (Lead), 1692 sx (Tail)	14.5 (Lead), 15.2 (Tail)	1.30 (Lead), 1.86 (Tail)	3505 Cu. Ft.	-500' into Intermediate Casing	8 hrs
Tubing							

Drillers TD (ft) 17,384' MD, 6895' TVD (BHL), 6978' TVD (Deepest Point Drilled) Loggers TD (ft) 17,346' MD
 Deepest formation penetrated Marcellus Plug back to (ft) N/A
 Plug back procedure N/A

Kick off depth (ft) 6938'

Check all wireline logs run caliper density deviated/directional induction
 neutron resistivity gamma ray temperature

** This is a subsequent well. Antero only runs wireline logs on one well on a multi-well pad (Post Unit 2H API# 47-033-05492). Please reference the wireline logs submitted with Form WR-35 for the Post Unit 2H. A Cement Bond Log has been included with this submittal.

Well cored Yes No Conventional Sidewall Were cuttings collected Yes No

DESCRIBE THE CENTRALIZER PLACEMENT USED FOR EACH CASING STRING _____

Conductor - 0
 Surface - 1 above guide shoe, 1 above insert float, 1 every 4th joint to surface
 Intermediate - 1 above float joint, 1 above float collar, 1 every 4th joint to surface
 Production - 1 above float joint, 1 below float collar, 1 every 3rd joint to top of cement

WAS WELL COMPLETED AS SHOT HOLE Yes No DETAILS _____

WAS WELL COMPLETED OPEN HOLE? Yes No DETAILS _____

WERE TRACERS USED Yes No TYPE OF TRACER(S) USED N/A

RECEIVED
Office of Oil and Gas

MAY 26 2015

WV Department of
Environmental Protection

06/05/2015

API 47- 033 - 05724

Farm name Sperry, Clarence

Well number Isaac Unit 1H

PERFORATION RECORD

Stage No.	Perforation date	Perforated from MD ft.	Perforated to MD ft.	Number of Perforations	Formation(s)
*PLEASE SEE ATTACHED EXHIBIT 1					

Please insert additional pages as applicable.

STIMULATION INFORMATION PER STAGE

Complete a separate record for each stimulation stage.

Stage No.	Stimulations Date	Ave Pump Rate (BPM)	Ave Treatment Pressure (PSI)	Max Breakdown Pressure (PSI)	ISIP (PSI)	Amount of Proppant (lbs)	Amount of Water (bbls)	Amount of Nitrogen/other (units)
*PLEASE SEE ATTACHED EXHIBIT 2								

RECEIVED
Office of Oil and Gas
MAY 26 2015

Please insert additional pages as applicable.

WV Department of
Environmental Protection
06/05/2015

API 47- 033 - 05724 Farm name Sperry, Clarence Well number Isaac Unit 1H

PRODUCING FORMATION(S)	DEPTHS	
Marcellus	6918' (Top) TVD	7366' (Top) MD

Please insert additional pages as applicable.

GAS TEST Build up Drawdown Open Flow OIL TEST Flow Pump
 SHUT-IN PRESSURE Surface 3600 psi Bottom Hole --- psi DURATION OF TEST --- hrs
 OPEN FLOW Gas 11,004 mcfpd Oil --- bpd NGL --- bpd Water 243 bpd GAS MEASURED BY Estimated Orifice Pilot

LITHOLOGY/ FORMATION	TOP DEPTH IN FT NAME TVD	BOTTOM DEPTH IN FT TVD	TOP DEPTH IN FT MD	BOTTOM DEPTH IN FT MD	DESCRIBE ROCK TYPE AND RECORD QUANTITY AND TYPE OF FLUID (FRESHWATER, BRINE, OIL, GAS, H ₂ S, ETC)
	0		0		
*PLEASE SEE ATTACHED EXHIBIT 3					

Please insert additional pages as applicable.

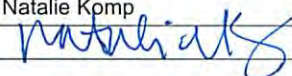
Drilling Contractor Frontier Drilling LLC
 Address 562 Spring Run Road City Pennsboro State WV Zip 26415

Logging Company Rush Wellsite Services
 Address 600 Alpha Drive City Canonsburg State PA Zip 15317

Cementing Company Nabors Completions & Production Services, Co.
 Address 1650 Hackers Creek City Jane Lew State WV Zip 26378

Stimulating Company Baker Hughes
 Address 837 Philippi Pike City Clarksburg State WV Zip 26301

Please insert additional pages as applicable.

Completed by Natalie Komp Telephone 303-357-6820
 Signature  Title Permitting Agent Date 5/8/2015

Submittal of Hydraulic Fracturing Chemical Disclosure Information Attach copy of FRACFOCUS Registry

RECEIVED
 Office of Oil and Gas
 MAY 26 2015
 WV Department of
 Environmental Protection
 06/05/2015

API 47-033-05724 Farm Name Sperry, Clarence Well Number Issac Unit 1H

EXHIBIT 1

Stage No.	Perforation Date	Perforated from MD ft.	Perforated to MD ft.	Number of Perforations	Formations
1	2-Mar-14	17,114'	17,304'	60	Marcellus
2	21-Mar-14	16,888	17,078'	60	Marcellus
3	21-Mar-14	16,663'	16,853'	60	Marcellus
4	21-Mar-14	16,437'	16,627'	60	Marcellus
5	22-Mar-14	16,211'	16,401'	60	Marcellus
6	22-Mar-14	15,985'	16,176'	60	Marcellus
7	22-Mar-14	15,760'	15,950'	60	Marcellus
8	23-Mar-14	15,534'	15,724'	60	Marcellus
9	23-Mar-14	15,308'	15,498'	60	Marcellus
10	24-Mar-14	15,083'	15,273'	60	Marcellus
11	24-Mar-14	14,857'	15,047'	60	Marcellus
12	24-Mar-14	14,631'	14,821'	60	Marcellus
13	25-Mar-14	14,406'	14,596'	60	Marcellus
14	14-Mar-14	14,180'	14,370'	60	Marcellus
15	25-Mar-14	13,954'	14,144'	60	Marcellus
16	26-Mar-14	13,729'	13,919'	60	Marcellus
17	26-Mar-14	13,503'	13,693'	60	Marcellus
18	26-Mar-14	13,277'	13,467'	60	Marcellus
19	27-Mar-14	13,052'	13,242'	60	Marcellus
20	27-Mar-14	12,826'	13,016'	60	Marcellus
21	28-Mar-14	12,600'	12,790'	60	Marcellus
22	28-Mar-14	12,374'	12,565'	60	Marcellus
23	28-Mar-14	12,149'	12,339'	60	Marcellus
24	29-Mar-14	11,923'	12,113'	60	Marcellus
25	29-Mar-14	11,697'	11,887'	60	Marcellus
26	29-Mar-14	11,472'	11,662'	60	Marcellus
27	29-Mar-14	11,246'	11,436'	60	Marcellus
28	30-Mar-14	11,020'	11,210'	60	Marcellus
29	30-Mar-14	10,795'	10,985'	60	Marcellus
30	30-Mar-14	10,569'	10,759'	60	Marcellus
31	30-Mar-14	10,343'	10,533'	60	Marcellus
32	30-Mar-14	10,118'	10,308'	60	Marcellus
33	31-Mar-14	9892'	10,082'	60	Marcellus
34	31-Mar-14	9666'	9856'	60	Marcellus
35	31-Mar-14	9440'	9631'	60	Marcellus
36	1-Apr-14	9215'	9405'	60	Marcellus
37	1-Apr-14	8989'	9179'	60	Marcellus
38	1-Apr-14	8763'	8953'	60	Marcellus
39	1-Apr-14	8538'	8728'	60	Marcellus
40	2-Apr-14	8312'	8502'	60	Marcellus
41	2-Apr-14	8086'	8276'	60	Marcellus
42	2-Apr-14	7861'	8051'	60	Marcellus
43	2-Apr-14	7635'	7825'	60	Marcellus
44	3-Apr-14	7409'	7599'	60	Marcellus

RECEIVED
Office of Oil and Gas

MAY 26 2015

WV Department of
Environmental Protection

06/05/2015

EXHIBIT 2

Stage No.	Stimulations Date	Avg Pump Rate	Avg Treatment Pressure (PSI)	Max Breakdown Pressure (PSI)	ISIP (PSI)	Amount of Proppant (lbs)	Amount of Water (bbls)	Amount of Nitrogen/ other (units)
1	21-Mar-14	67.0	8,835	6,418	5,349	249,442	6,871	N/A
2	21-Mar-14	67.1	7,981	6,071	5,787	258,170	7,023	N/A
3	21-Mar-14	73.1	8,033	5,996	4,331	267,362	6,987	N/A
4	21-Mar-14	74.0	8,142	6,640	5,393	268,913	6,916	N/A
5	22-Mar-14	67.0	8,173	6,345	4,599	202,624	7,535	N/A
6	22-Mar-14	75.5	7,991	6,007	4,382	272,298	7,064	N/A
7	22-Mar-14	74.0	8,041	5,650	5,555	232,674	6,443	N/A
8	23-Mar-14	67.0	8,171	5,668	5,848	272,833	6,866	N/A
9	23-Mar-14	72.0	8,103	5,540	5,674	270,267	6,892	N/A
10	24-Mar-14	73.0	8,206	5,750	4,537	269,657	6,894	N/A
11	24-Mar-14	71.4	8,055	5,639	4,535	272,606	6,873	N/A
12	24-Mar-14	71.9	8,060	5,642	4,635	188,926	7,395	N/A
13	25-Mar-14	73.0	7,907	5,560	4,830	246,741	7,296	N/A
14	25-Mar-14	78.0	7,771	5,996	4,677	270,724	6,766	N/A
15	25-Mar-14	74.0	7,843	5,757	4,590	289,900	6,800	N/A
16	26-Mar-14	70.0	8,204	5,920	5,029	127,349	7,310	N/A
17	26-Mar-14	70.8	7,840	5,743	4,849	200,089	7,157	N/A
18	26-Mar-14	69.0	7,736	5,905	4,717	253,199	7,327	N/A
19	27-Mar-14	72.6	7,497	5,472	4,792	269,070	6,771	N/A
20	27-Mar-14	76.0	7,849	5,409	4,546	273,683	6,730	N/A
21	28-Mar-14	73.0	7,797	5,967	4,598	273,683	6,689	N/A
22	28-Mar-14	73.4	7,663	5,271	4,911	273,288	6,629	N/A
23	28-Mar-14	77.2	7,895	5,559	5,212	272,488	6,643	N/A
24	29-Mar-14	79.0	7,915	6,117	5,328	270,858	6,613	N/A
25	29-Mar-14	73.0	7,800	5,704	4,688	230,046	6,650	N/A
26	29-Mar-14	75.0	7,806	5,904	5,278	268,727	6,644	N/A
27	29-Mar-14	79.0	7,651	5,545	4,810	271,317	6,575	N/A
28	30-Mar-14	79.0	7,692	5,920	4,667	191,540	6,544	N/A
29	30-Mar-14	74.0	7,564	5,716	5,030	270,768	6,829	N/A
30	30-Mar-14	77.0	7,772	5,890	5,415	270,433	6,506	N/A
31	30-Mar-14	82.0	7,773	6,002	4,885	272,772	6,530	N/A
32	30-Mar-14	80.0	7,909	5,600	4,678	270,901	6,489	N/A
33	31-Mar-14	80.0	7,634	5,642	4,684	270,924	6,477	N/A
34	31-Mar-14	78.0	7,458	5,497	4,798	268,183	6,417	N/A
35	31-Mar-14	79.0	7,533	5,554	4,678	269,461	6,414	N/A
36	1-Apr-14	80.0	7,610	5,699	4,454	270,754	6,410	N/A
37	1-Apr-14	76.0	7,157	5,536	5,510	229,336	7,063	N/A
38	1-Apr-14	76.0	7,076	5,583	4,799	270,262	6,365	N/A
39	1-Apr-14	79.0	7,402	6,000	4,537	268,537	6,366	N/A
40	2-Apr-14	80.0	7,435	5,781	4,356	268,644	6,337	N/A
41	2-Apr-14	80.0	7,267	5,545	4,381	267,385	6,333	N/A
42	2-Apr-14	82.0	7,227	6,004	4,288	269,128	6,308	N/A
43	2-Apr-14	80.0	7,110	5,557	4,336	267,481	6,308	N/A
44	3-Apr-14	80.0	6,913	6,215	4,368	297,597	6,786	N/A
AVG=		75.2	7,761	5,794	4,849	11,311,040	296,841	TOTAL

RECEIVED
Office of Oil and Gas

MAY 26 2015

API 47-033-05724 Farm Name Sperry, Clarence Well Number Isaac Unit 1H

EXHIBIT 3

LITHOLOGY/ FORMATION	TOP DEPTH (TVD)	BOTTOM DEPTH (TVD)	TOP DEPTH (MD)	BOTTOM DEPTH (MD)
	From Surface	From Surface	From Surface	From Surface
Fresh Water	80	NA	80	N/A
Siltstone	0	107	0	107
Siltstone w/ Trace Coal	107	347	107	347
Sand/Siltstone	347	797	347	797
Coal	797	857	797	857
Siltstone w/ Trace Coal	857	977	857	977
Sandstone	977	1,037	977	1,037
Shale	1,037	1,500	1,037	1,500
Big Lime	est. 1500	1,610	est. 1500	1,610
Big Injun	est. 1610	2,003	est. 1610	2,003
Fifty Foot Sandstone	est. 2003	2,143	est. 2003	2,143
Gordon	est. 2143	2,418	est. 2143	2,418
Fifth Sandstone	est. 2418	2,466	est. 2418	2,466
Bayard	est. 2466	2,848	est. 2466	2,848
Warren	2,848	3,123	2,848	3,123
Speechley	3,123	3,349	3,123	3,349
Baltown	3,349	3,863	3,349	3,863
Bradford	3,863	4,440	3,863	4,440
Benson	4,440	4,740	4,440	4,740
Alexander	4,740	4,832	4,740	4,832
Elk	4,832	5,594	4,832	5,594
Rhinestreet	5,594	6,258	5,594	6,493
Sycamore	6,258	6,527	6,493	6,800
Middlesex	6,527	6,698	6,800	6,995
Burkett	6,698	6,728	6,995	7,034
Tully	6,728	6,918	7,034	7,366
Marcellus	6,918	NA	7,366	NA

*Please note Antero determines shallow formation tops based on mud and/or wireline logs that are only run on one well on a multi-well pad (Please reference Wireline Logs submitted for the Post Unit 2H API# 47-033-05492). The measured depth (MD) data on subsequent wells may be slightly different due to the well's unique departure.

RECEIVED
Office of Oil and Gas

MAY 26 2015

WV Department of
Environmental Protection

06/05/2015

Hydraulic Fracturing Fluid Product Component Information Disclosure

Job Start Date:	3/20/2014
Job End Date:	4/2/2014
State:	West Virginia
County:	Harrison
API Number:	47-033-05724-00-00
Operator Name:	Antero Resources Corporation
Well Name and Number:	Isaac Unit 1H
Longitude:	-80.46646110
Latitude:	39.23797780
Datum:	NAD27
Federal/Tribal Well:	NO
True Vertical Depth:	6,978
Total Base Water Volume (gal):	12,577,992
Total Base Non Water Volume:	0



Office of Oil and Gas

MAY 26 2015

Hydraulic Fracturing Fluid Composition:

Trade Name	Supplier	Purpose	Ingredients	EnviroChemical Abstract Service Number (CAS #)	Maximum Ingredient Concentration in Additive (% by mass)**	Maximum Ingredient Concentration in HF Fluid (% by mass)**	Comments
Water	Operator	Carrier	Water	7732-18-5	100.00000	90.11703	
Sand, White, 40/70	Baker Hughes	Proppant	Crystalline Silica (Quartz)	14808-60-7	100.00000	5.67551	
Sand, White, 20/40	Baker Hughes	Proppant	Crystalline Silica (Quartz)	14808-60-7	100.00000	3.09236	
Sand, White, 100 mesh	Baker Hughes	Proppant	Crystalline Silica (Quartz)	14808-60-7	100.00000	0.59605	
HCl, 10.1 - 15%	Baker Hughes	Acidizing	Water	7732-18-5	85.00000	0.17123	SmartCare Product
			Hydrochloric Acid	7647-01-0	15.00000	0.03022	SmartCare Product
GW-3LDF	Baker Hughes	Gelling Agent	Guar Gum	9000-30-0	60.00000	0.07518	SmartCare Product
			Petroleum Distillates	64742-47-8	30.00000	0.03759	SmartCare Product
			Paraffinic Petroleum Distillate	64742-55-8	30.00000	0.03759	SmartCare Product
			Crystalline Silica: Quartz	14808-60-7	5.00000	0.00626	SmartCare Product
			1-butoxy-2-propanol	5131-66-8	5.00000	0.00626	SmartCare Product
			isotridecanol, ethoxylated	9043-30-5	5.00000	0.00626	SmartCare Product
Enzyme G-NE	Baker Hughes	Breaker					

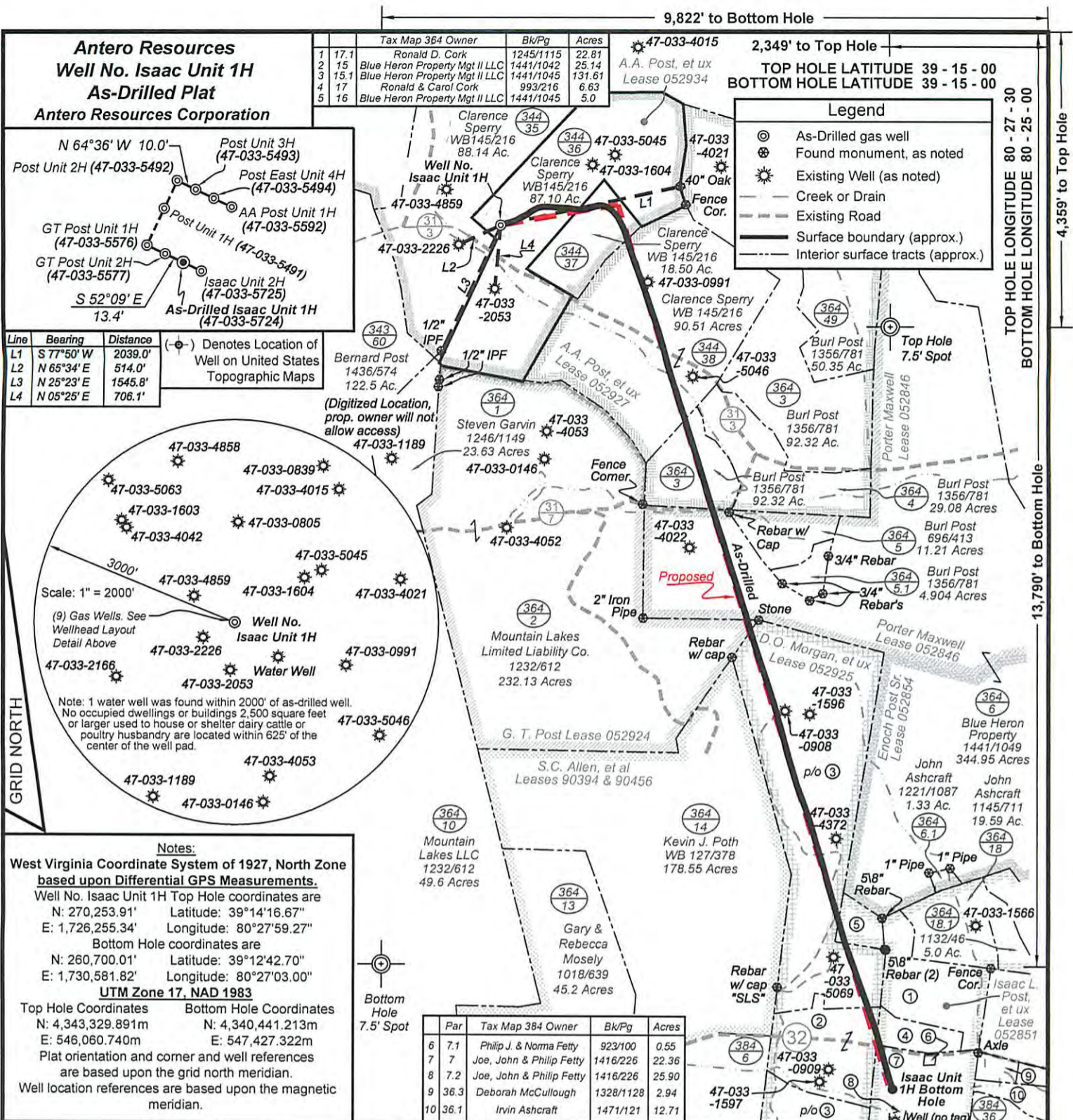
				No hazardous ingredients	NA							
FRW-18	Baker Hughes	Friction Reducer									0.02304	SmartCare Product
				Petroleum Distillates	64742-47-8						0.01702	SmartCare Product
Alpha 1427	Baker Hughes	Biocide										
				Glutaraldehyde	111-30-8						0.00409	SmartCare Product
				Didecyl Dimethyl Ammonium Chloride	7173-51-5						0.00136	SmartCare Product
				Ethanol	64-17-5						0.00068	SmartCare Product
				Quaternary Ammonium Compound	68424-85-1						0.00068	SmartCare Product
Scaletrol 720	Baker Hughes	Scale Inhibitor										
				Ethylene Glycol	107-21-1						0.00458	SmartCare Product
				Calcium Chloride	10043-52-4						0.00076	SmartCare Product
Ferrotrol 300L	Baker Hughes	Iron Control										
				Citric Acid	77-92-9						0.00079	SmartCare Product
CI-14	Baker Hughes	Corrosion Inhibitor										
				Methanol	67-56-1						0.00031	SmartCare Product
				Polyoxyalkylenes	Trade Secret						0.00009	SmartCare Product
				Fatty Acids	Trade Secret						0.00003	SmartCare Product
				Propargyl Alcohol	107-19-7						0.00002	SmartCare Product
				Olefin	Trade Secret						0.00002	SmartCare Product
GasFlo G, 55 gal drum	Baker Hughes	Surfactant										
				Methanol	67-56-1						0.00001	SmartCare Product
				Oxyalkylated Alkylphenol (1)	Trade Secret						0.00000	SmartCare Product
				Oxyalkylated Alkylphenol (2)	Trade Secret						0.00000	SmartCare Product
				Polyoxyalkylene	Trade Secret						0.00000	SmartCare Product
				Oxyalkylated Amne	Trade Secret						0.00000	SmartCare Product
NE-900, drum	Baker Hughes	Non-emulsifier										
				Methanol	67-56-1						0.00001	SmartCare Product
				Nonyl Phenyl Polyethylene Glycol Ether	9016-45-9						0.00000	SmartCare Product
Ingredients shown above are subject to 29 CFR 1910.1200(l) and appear on Material Safety Data Sheets (MSDS). Ingredients shown below are Non-MSDS.												
		Other Chemicals										
				Water	7732-18-5						0.06676	
				Poly (acrylamide-co-acrylic acid)	Trade Secret						0.01702	
				Polyacrylate	Trade Secret						0.00305	
				Salt	Trade Secret						0.00284	
				Sorbitan Monooleate	Trade Secret						0.00284	
				Hemicellulase Enzyme Concentrate	9025-56-3						0.00115	
				Ethoxylated Alcohol	Trade Secret						0.00113	
				2-butoxy-1-propanol	15821-83-7						0.00013	
				Modified Thiorea Polymer	68527-49-1						0.00002	
				Copolymer	Trade Secret						0.00001	
				Potassium Chloride	7447-40-7						0.00001	
				Sodium Chloride	7647-14-5						0.00000	

					0.00000
				7647-01-0	0.00000
				50-00-0	0.00000
			Hydrochloric Acid		
			Formaldehyde		

* Total Water Volume sources may include fresh water, produced water, and/or recycled water
 ** Information is based on the maximum potential for concentration and thus the total may be over 100%

Note: For Field Development Products (products that begin with FDP), MSDS level only information has been provided.
 Ingredient information for chemicals subject to 29 CFR 1910.1200(i) and Appendix D are obtained from suppliers Material Safety Data Sheets (MSDS)

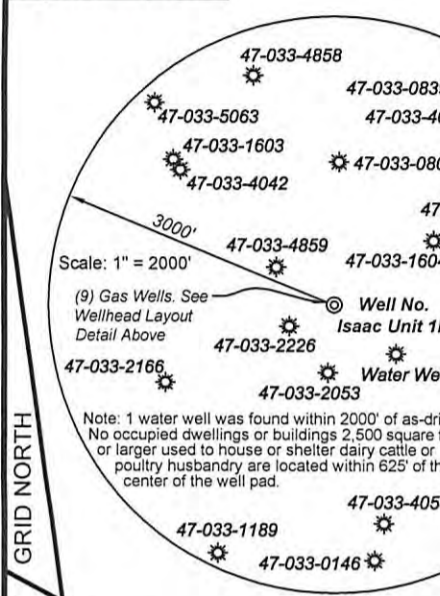
RECEIVED
 Office of Oil and Gas
 MAY 26 2015
 WV Department of
 Environmental Protection



Antero Resources
Well No. Isaac Unit 1H
As-Drilled Plat
Antero Resources Corporation

Line	Bearing	Distance
L1	S 77°50' W	2039.0'
L2	N 65°34' E	514.0'
L3	N 25°23' E	1545.8'
L4	N 05°25' E	706.1'

(-o-) Denotes Location of Well on United States Topographic Maps



Notes:
West Virginia Coordinate System of 1927, North Zone based upon Differential GPS Measurements.
 Well No. Isaac Unit 1H Top Hole coordinates are
 N: 270,253.91' Latitude: 39°14'16.67"
 E: 1,726,255.34' Longitude: 80°27'59.27"
 Bottom Hole coordinates are
 N: 260,700.01' Latitude: 39°12'42.70"
 E: 1,730,581.82' Longitude: 80°27'03.00"
UTM Zone 17, NAD 1983
 Top Hole Coordinates Bottom Hole Coordinates
 N: 4,343,329.891m N: 4,340,441.213m
 E: 546,060.740m E: 547,427.322m
 Plat orientation and corner and well references are based upon the grid north meridian.
 Well location references are based upon the magnetic meridian.

Tax Map 364 Owner	Bk/Pg	Acres
Ronald D. Cork	1245/1115	22.81
Blue Heron Property Mgt II LLC	1441/1042	25.14
Blue Heron Property Mgt II LLC	1441/1045	131.61
Ronald & Carol Cork	993/216	6.63
Blue Heron Property Mgt II LLC	1441/1045	5.0

Par	Tax Map 364 Owner	Bk/Pg	Acres
6	Philip J. & Norma Fetty	923/100	0.55
7	Joe, John & Philip Fetty	1416/226	22.36
8	Joe, John & Philip Fetty	1416/226	25.90
9	Deborah McCullough	1328/128	2.94
10	Irvin Ashcraft	1471/121	12.71

Tax Map 364 Owner	Bk/Pg	Acres
Clarence Sperry WB 145/216	344/35	88.14 Ac.
Clarence Sperry WB 145/216	344/36	87.10 Ac.
Clarence Sperry WB 145/216	344/37	18.50 Ac.
Clarence Sperry WB 145/216	344/38	90.51 Acres
Clarence Sperry WB 145/216	344/39	92.32 Ac.
Clarence Sperry WB 145/216	344/40	92.32 Ac.
Clarence Sperry WB 145/216	344/41	92.32 Ac.
Clarence Sperry WB 145/216	344/42	92.32 Ac.
Clarence Sperry WB 145/216	344/43	92.32 Ac.
Clarence Sperry WB 145/216	344/44	92.32 Ac.
Clarence Sperry WB 145/216	344/45	92.32 Ac.
Clarence Sperry WB 145/216	344/46	92.32 Ac.
Clarence Sperry WB 145/216	344/47	92.32 Ac.
Clarence Sperry WB 145/216	344/48	92.32 Ac.
Clarence Sperry WB 145/216	344/49	92.32 Ac.
Clarence Sperry WB 145/216	344/50	92.32 Ac.
Clarence Sperry WB 145/216	344/51	92.32 Ac.
Clarence Sperry WB 145/216	344/52	92.32 Ac.
Clarence Sperry WB 145/216	344/53	92.32 Ac.
Clarence Sperry WB 145/216	344/54	92.32 Ac.
Clarence Sperry WB 145/216	344/55	92.32 Ac.
Clarence Sperry WB 145/216	344/56	92.32 Ac.
Clarence Sperry WB 145/216	344/57	92.32 Ac.
Clarence Sperry WB 145/216	344/58	92.32 Ac.
Clarence Sperry WB 145/216	344/59	92.32 Ac.
Clarence Sperry WB 145/216	344/60	92.32 Ac.



RECEIVED
 Office of Oil and Gas
 MAY 26 2015
 WV Department of Environmental Protection

Top Hole coordinates verified by survey grade GPS. As-drilled data and information was provided by Antero Resources Corporation. Allegheny Surveys, Inc. (ASI) is not certifying the data and information provided. ASI is not responsible for any errors or inaccuracies with the data and information that has been provided.

FILE NO: 183-36-U-11
 DRAWING NO: Isaac 1H As-Drill Well Plat
 SCALE: 1" = 1500'
 MINIMUM DEGREE OF ACCURACY: Submeter
 PROVEN SOURCE OF ELEVATION: WVDOT, Bridgeport, WV

STATE OF WEST VIRGINIA
 DEPARTMENT OF ENVIRONMENTAL PROTECTION
OIL AND GAS DIVISION

DATE: March 31 2015
 OPERATOR'S WELL NO. Isaac Unit 1H
 API WELL NO
 47 - 033 - 05724
 STATE COUNTY PERMIT

WELL TYPE: OIL GAS LIQUID INJECTION WASTE DISPOSAL
 (IF GAS) PRODUCTION: STORAGE DEEP SHALLOW

LOCATION: ELEVATION: Existing Grade - 1168' Original Grade - 1169' WATERSHED: Middle West Fork River QUADRANGLE: West Milford
 DISTRICT: Union COUNTY: Harrison

SURFACE OWNER: Clarence Sperry Isaac L. Post, et ux 90394 & 90456 ACREAGE: 87.10 156; 121
 S.C. Allen, et al; D.O. Morgan, et ux 052846; 052924; 052851 235; 237
 ROYALTY OWNER: A.A. Post, et ux; A.A. Post, et ux; Porter Maxwell; G.T. Post LEASE NO: 052934; 052927; 052925 ACREAGE: 291.5; 270; 254.5

PROPOSED WORK: DRILL CONVERT DRILL DEEPER FRACTURE OR STIMULATE PLUG OFF OLD FORMATION
 PERFORATE NEW FORMATION OTHER PHYSICAL CHANGE IN WELL (SPECIFY) As-Drilled
 PLUG AND ABANDON CLEAN OUT AND REPLUG TARGET FORMATION: Marcellus Shale DEPTH: 6,895' TVD 17,384' MD

WELL OPERATOR: Antero Resources Corporation DESIGNATED AGENT: Dianna Stamper - CT Corporation System
 ADDRESS: 1615 Wynkoop Street ADDRESS: 5400 D Big Tyler Road
 Denver, CO 80202 Charleston, WV 25313