

MAXWELL LEASE WELL NO. 3HM

3HM WELL TIES

LINE	BEARING	DISTANCE
L1	N 02°08'46" W	4232.05'
L2	N 14°45'23" E	2524.34'

**WELL NO. 3HM
TOP HOLE**
STATE PLANE COORDINATES
(NORTH ZONE NAD '27)
N. 265,036
E. 1,754,372

TOP HOLE (NAD '27)
LAT=(N) 39°13'27.9"
LONG=(W) 80°22'01.3"

TOP HOLE (NAD '83)
LAT=(N) 39°13'28.3"
LONG=(W) 80°22'00.6"

TOP HOLE UTM (NAD '83)
(N) 4,341,883
(E) 554,653

**WELL NO. 3HM
LANDING POINT**
STATE PLANE COORDINATES
(NORTH ZONE NAD '27)
N. 265,236
E. 1,753,210

LANDING POINT (NAD '27)
LAT=(N) 39°13'29.9"
LONG=(W) 80°22'16.1"

LANDING POINT (NAD '83)
LAT=(N) 39°13'30.1"
LONG=(W) 80°22'15.4"

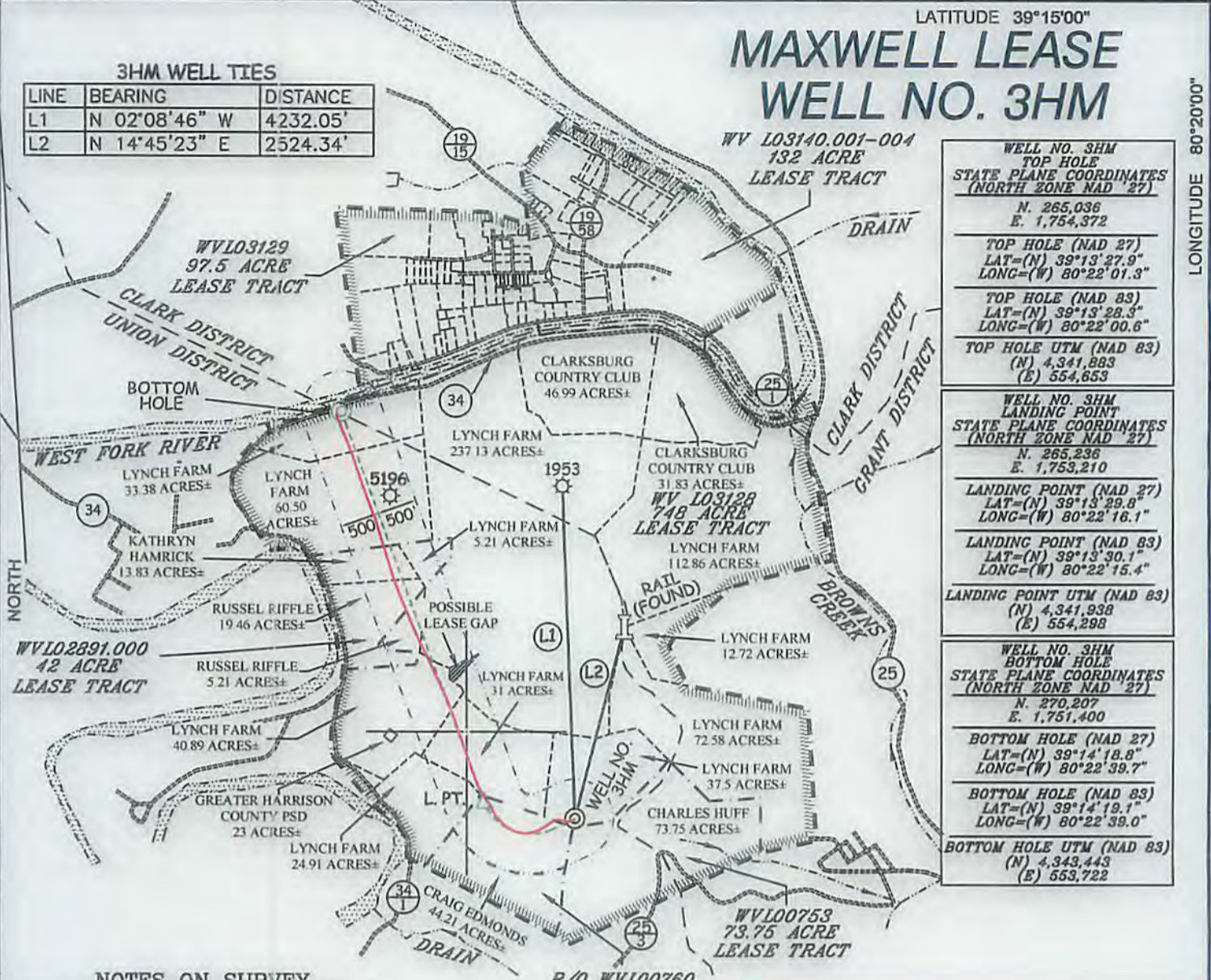
LANDING POINT UTM (NAD '83)
(N) 4,341,938
(E) 554,298

**WELL NO. 3HM
BOTTOM HOLE**
STATE PLANE COORDINATES
(NORTH ZONE NAD '27)
N. 270,207
E. 1,751,400

BOTTOM HOLE (NAD '27)
LAT=(N) 39°14'18.8"
LONG=(W) 80°22'39.7"

BOTTOM HOLE (NAD '83)
LAT=(N) 39°14'19.1"
LONG=(W) 80°22'39.0"

BOTTOM HOLE UTM (NAD '83)
(N) 4,343,443
(E) 553,722



NOTES ON SURVEY

1. TIES TO WELLS, REFERENCES, AND CORNERS ARE BASED ON GRID NORTH FOR THE WV STATE PLANE COORDINATE SYSTEM NORTH ZONE NAD '27.
2. LEASE BOUNDARY SHOWN HEREON TAKEN FROM DEED BOOK 142 PAGE 484 AND ADJOINING DEEDS.
3. SURFACE OWNER AND ADJOINER INFORMATION TAKEN FROM THE ASSESSOR AND COUNTY CLERK RECORDS OF HARRISON COUNTY IN JULY, 2012.
4. WELL LAT./LONG. (NAD'27) ESTABLISHED BY DGPS(SURVEY GRADE).
5. AS DRILLED INFORMATION PROVIDED BY PDC MOUNTAINEER, LLC.

LEGEND

AS DRILLED —
PROPOSED ---

AS DRILLED COORDINATES FOR WELL NO. 3HM

(S.P.C. NORTH ZONE) (UTM(M) ZONE 17 NORTH)

NAD'27 S.P.C.(FT)	N. 265,036	E. 1,754,372
NAD'27 GEO.	LAT=(N) 39°13'27.9"	LONG=(W) 80°22'01.3"
NAD'83 GEO.	LAT=(N) 39°13'28.3"	LONG=(W) 80°22'00.6"
NAD'83 UTM (M)	N. 4,341,883	E. 554,653
BOTTOM HOLE		
NAD'27 S.P.C.(FT)	N. 270,174	E. 1,751,335
NAD'27 GEO.	LAT=(N) 39°14'18.4"	LONG=(W) 80°22'40.5"
NAD'83 GEO.	LAT=(N) 39°14'18.8"	LONG=(W) 80°22'39.9"
NAD'83 UTM (M)	N. 4,343,433	E. 553,702



I THE UNDERSIGNED, HEREBY CERTIFY THAT THIS PLAT IS CORRECT TO THE BEST OF MY KNOWLEDGE AND BELIEF AND SHOWS ALL THE INFORMATION REQUIRED BY LAW AND THE REGULATIONS ISSUED AND PRESCRIBED BY THE DIVISION OF ENVIRONMENTAL PROTECTION.

P.S.
677

Gregory A. Smith



(+) DENOTES LOCATION OF WELL ON UNITED STATES TOPOGRAPHIC MAPS.

DATE APRIL 3, 20 13

REVISED DATE 09/03/13 & 06/10/15

OPERATORS WELL NO. MAXWELL 3HM

API WELL NO. 47 - 033 - 05741H

STATE COUNTY PERMIT

MINIMUM DEGREE OF ACCURACY 1/200 FILE NO. 8450P3HMASDRILLED
PROVEN SOURCE OF ELEVATION DGPS (SUBMETER MAPPING GRADE) SCALE 1" = 2,000'

STATE OF WEST VIRGINIA
DIVISION OF ENVIRONMENTAL PROTECTION
OFFICE OF OIL AND GAS



WELL TYPE: OIL GAS LIQUID INJECTION WASTE DISPOSAL IF "GAS" PRODUCTION STORAGE DEEP SHALLOW

LOCATION: ELEVATION 1,457' WATERSHED WEST FORK RIVER
DISTRICT UNION COUNTY HARRISON QUADRANGLE MOUNT CLARE 7.5'

SURFACE OWNER LYNCH FARM, LLC ACREAGE 37.5±
ROYALTY OWNER WBM PROPERTIES LLC, ET AL ACREAGE 748, 42, 44.21, 73.5, 10/30/2015

PROPOSED WORK: DRILL CONVERT DRILL DEEPER REDRILL FRACTURE OR STIMULATE PLUG OFF OLD FORMATION PERFORATE NEW FORMATION PLUG AND ABANDON CLEAN OUT AND REPLUG OTHER

PHYSICAL CHANGE IN WELL (SPECIFY) _____ TARGET FORMATION MARCELLUS
ESTIMATED DEPTH 7,590' TVD / TMD 13,695'

WELL OPERATOR PDC MOUNTAINEER, LLC DESIGNATED AGENT NATHAN SKEEN
ADDRESS 6031 WALLACE ROAD EXTENSION, SUITE 300 WEXFORD, PA 15090 ADDRESS 65 PROFESSIONAL PLACE, SUITE 200 BRIDGEPORT, WV 26330

LONGITUDE 80°20'00"

9,315'

COUNTY NAME

PERMIT