

3305743

9,515'

plot spot Arc

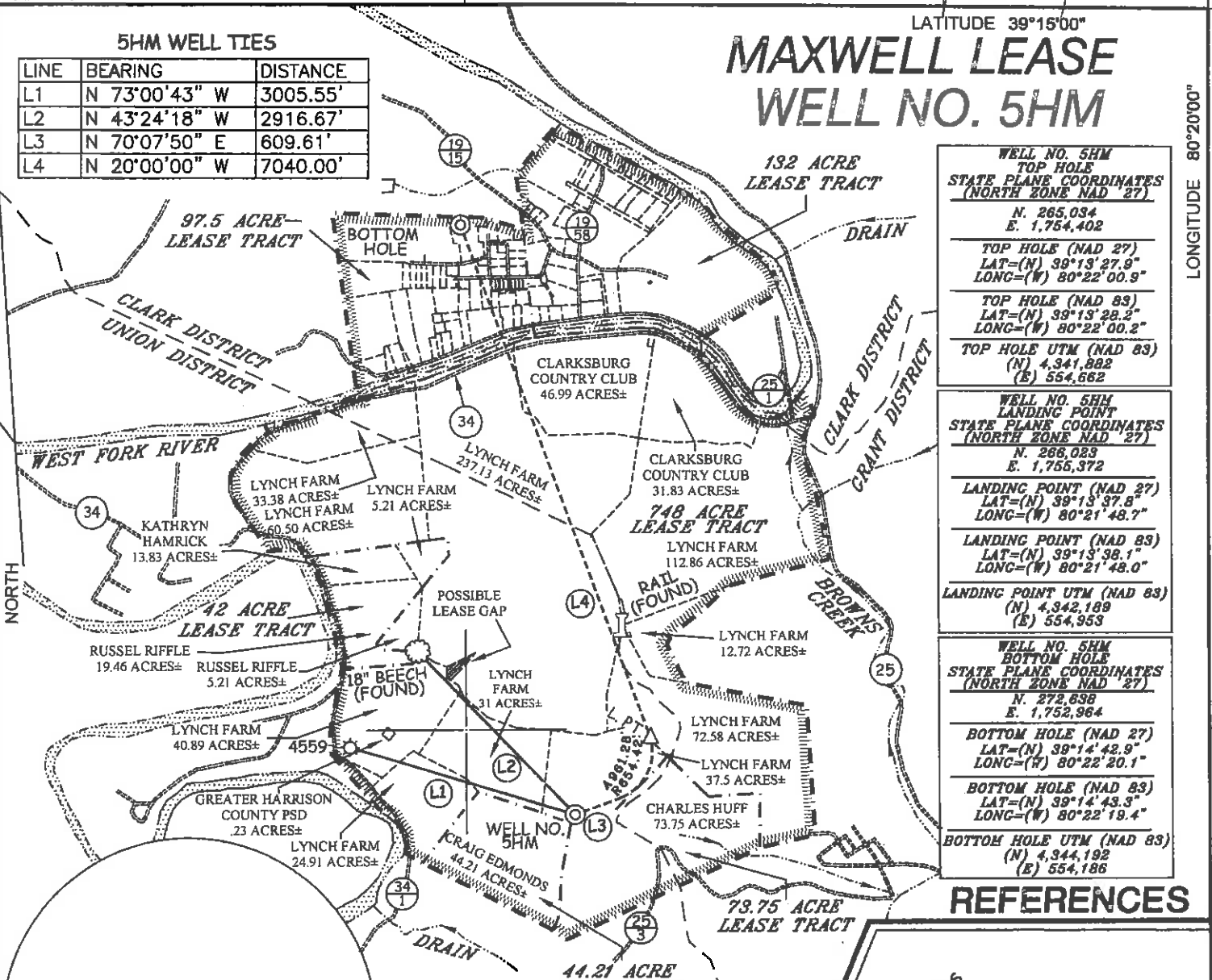
LATITUDE 39°15'00"

MAXWELL LEASE WELL NO. 5HM

LONGITUDE 80°20'00"

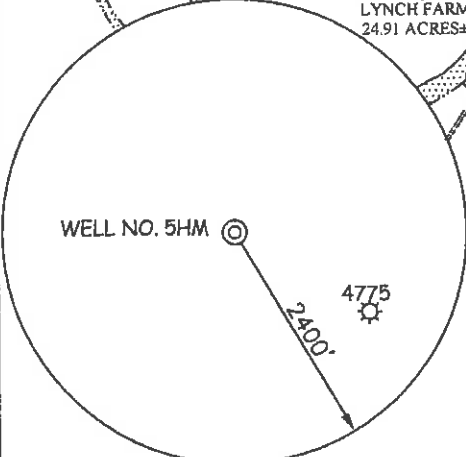
5HM WELL TIES

LINE	BEARING	DISTANCE
L1	N 73°00'43" W	3005.55'
L2	N 43°24'18" W	2916.67'
L3	N 70°07'50" E	609.61'
L4	N 20°00'00" W	7040.00'



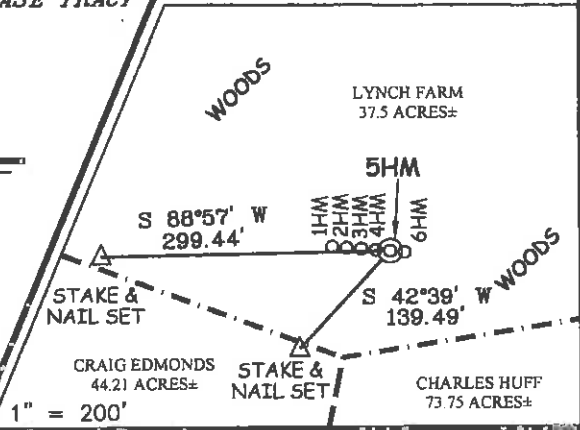
WELL NO. 5HM TOP HOLE STATE PLANE COORDINATES (NORTH ZONE NAD 27) N. 265,034 E. 1,764,402 TOP HOLE (NAD 27) LAT=(N) 39°13'27.9" LONG=(W) 80°22'00.9" TOP HOLE (NAD 83) LAT=(N) 39°13'28.2" LONG=(W) 80°22'00.2" TOP HOLE UTM (NAD 83) (N) 4,341,882 (E) 554,662
WELL NO. 5HM LANDING POINT STATE PLANE COORDINATES (NORTH ZONE NAD 27) N. 266,023 E. 1,755,372 LANDING POINT (NAD 27) LAT=(N) 39°13'37.8" LONG=(W) 80°21'48.7" LANDING POINT (NAD 83) LAT=(N) 39°13'38.1" LONG=(W) 80°21'48.0" LANDING POINT UTM (NAD 83) (N) 4,342,189 (E) 554,953
WELL NO. 5HM BOTTOM HOLE STATE PLANE COORDINATES (NORTH ZONE NAD 27) N. 272,638 E. 1,752,964 BOTTOM HOLE (NAD 27) LAT=(N) 39°14'42.9" LONG=(W) 80°22'20.1" BOTTOM HOLE (NAD 83) LAT=(N) 39°14'43.3" LONG=(W) 80°22'19.4" BOTTOM HOLE UTM (NAD 83) (N) 4,344,192 (E) 554,186

REFERENCES

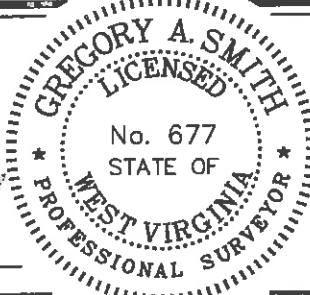


NOTES ON SURVEY

1. TIES TO WELLS, REFERENCES, AND CORNERS ARE BASED ON GRID NORTH FOR THE WV STATE PLANE COORDINATE SYSTEM NORTH ZONE NAD '27.
2. LEASE BOUNDARY SHOWN HEREON TAKEN FROM DEED BOOK 142 PAGE 484 AND ADJOINING DEEDS.
3. SURFACE OWNER AND ADJOINER INFORMATION TAKEN FROM THE ASSESSOR AND COUNTY CLERK RECORDS OF HARRISON COUNTY IN JULY, 2012.
4. WELL LAT./LONG. (NAD'27) ESTABLISHED BY DGPS(SURVEY GRADE).



I THE UNDERSIGNED, HEREBY CERTIFY THAT THIS PLAT IS CORRECT TO THE BEST OF MY KNOWLEDGE AND BELIEF AND SHOWS ALL THE INFORMATION REQUIRED BY LAW AND THE REGULATIONS ISSUED AND PRESCRIBED BY THE DIVISION OF ENVIRONMENTAL PROTECTION.



P.S. 677 *Gregory A. Smith*

(+) DENOTES LOCATION OF WELL ON UNITED STATES TOPOGRAPHIC MAPS.
 DATE APRIL 3, 20 13
 REVISED DATE APRIL 11, 20 13
 OPERATORS WELL NO. MAXWELL 5HM
 API WELL NO. 47 - 033-05743
 STATE COUNTY PERMIT

MINIMUM DEGREE OF ACCURACY 1/200 FILE NO. 7995P5HMR2(448-13)
 PROVEN SOURCE OF ELEVATION DGPS (SUBMETER MAPPING GRADE) SCALE 1" = 2,000'

STATE OF WEST VIRGINIA
 DIVISION OF ENVIRONMENTAL PROTECTION
 OFFICE OF OIL AND GAS

WELL TYPE: OIL ___ GAS LIQUID INJECTION ___ WASTE DISPOSAL ___ IF "GAS" PRODUCTION STORAGE ___ DEEP ___ SHALLOW

LOCATION: ELEVATION 1,462' WATERSHED WEST FORK RIVER
 DISTRICT UNION COUNTY HARRISON QUADRANGLE MOUNT CLARE 7.5'
 SURFACE OWNER LYNCH FARM, LLC ACREAGE 37.5±
 ROYALTY OWNER WBM HEIRS PROPERTIES, LLC ACREAGE 748, 42, 44.21, 73.75, 97.5, & 132±
 PROPOSED WORK: DRILL CONVERT ___ DRILL DEEPER ___ REDRILL ___ FRACTURE OR STIMULATE PLUG OFF OLD
 FORMATION ___ PERFORATE NEW FORMATION ___ PLUG AND ABANDON ___ CLEAN OUT AND REPLUG ___ OTHER ___
 PHYSICAL CHANGE IN WELL (SPECIFY) TARGET FORMATION MARCELLUS ESTIMATED DEPTH 7,590' TVD / TMD 15,520'

WELL OPERATOR PDC MOUNTAINEER, LLC DESIGNATED AGENT JAMIE HAGA
 ADDRESS 120 GENESIS BOULEVARD BRIDGEPORT, WV 26330 ADDRESS 120 GENESIS BOULEVARD BRIDGEPORT, WV 26330 07/12/2013

COUNTY NAME PERMIT

**MAXWELL LEASE
WELL NO.'S 1HM - 6HM**

MAXWELL
WELL NO.'S
1HM-6HM

ASSOCIATED
PIT

SEE MAXWELL SITE PLAN FOR
COMPLETE DETAILS OF ACCESS
ROAD, PIT, AND PAD DESIGNS.

Received
Office of Oil & Gas



Professional Energy Consultants
A Division of Environmental Services

SURVEYORS
PROJECT MGMT.



ENGINEERS
ENVIRONMENTAL

200 West Main St
P.O. Box 120
Channahon, IL 61511
(815) 462-8834

20000 Jones Springs Road
Channahon, IL 61517
(815) 461-1211

TOPO SECTION OF USGS
MOUNT CLARE 7.5' QUADRANGLE

2013
SCALE: 1"=500'



07/12/2013

DRAWN BY: C.P.M. FILE NO.: 7995 DATE: 03-28-13 CADD FILE: 7995REC.DWG