

I, the undersigned, hereby certify that this plat is correct to the best of my knowledge and belief and shows all the information required by law and the rules issued and prescribed by the Department of Environmental Protection.

*Kenneth J. Plum*  
Kenneth J. Plum, P.S. 2216

**Notes:**  
West Virginia Coordinate System of 1927, North Zone based upon Differential GPS Measurements.  
Well No. Avery Unit 1H Top Hole coordinates are  
N: 261,096.55' Latitude: 39°12'44.44"  
E: 1,710,542.76' Longitude: 80°31'17.63"  
Bottom Hole coordinates are  
N: 269,938.29' Latitude: 39°14'11.43"  
E: 1,706,966.65' Longitude: 80°32'04.36"  
**UTM Zone 17, NAD 1983**  
Top Hole Coordinates Bottom Hole Coordinates  
N: 4,340,460.283m N: 4,343,135.770m  
E: 541,320.299m E: 540,185.919m  
Plat orientation and corner and well references are based upon the grid north meridian.  
Well location references are based upon the magnetic meridian.

**Legend**

- Proposed gas well
- Found Monument (as noted)
- Creek or Drain
- Existing Road
- Surface boundary (approx.)
- Interior surface tracts (approx.)

	Bearing	Distance
L1	S 66°11' E	604.8'
L2	S 88°51' W	923.6'
L3	S 46°32' W	1394.0'
L4	S 00°04' E	1127.2'
L5	S 87°16' W	846.6'

FILE NO: 312-36-U-12  
DRAWING NO: 312-12 Avery 1H Well  
SCALE: 1" = 1200'  
MINIMUM DEGREE OF ACCURACY: Submeter  
PROVEN SOURCE OF ELEVATION: WVDOT, Bridgeport, WV

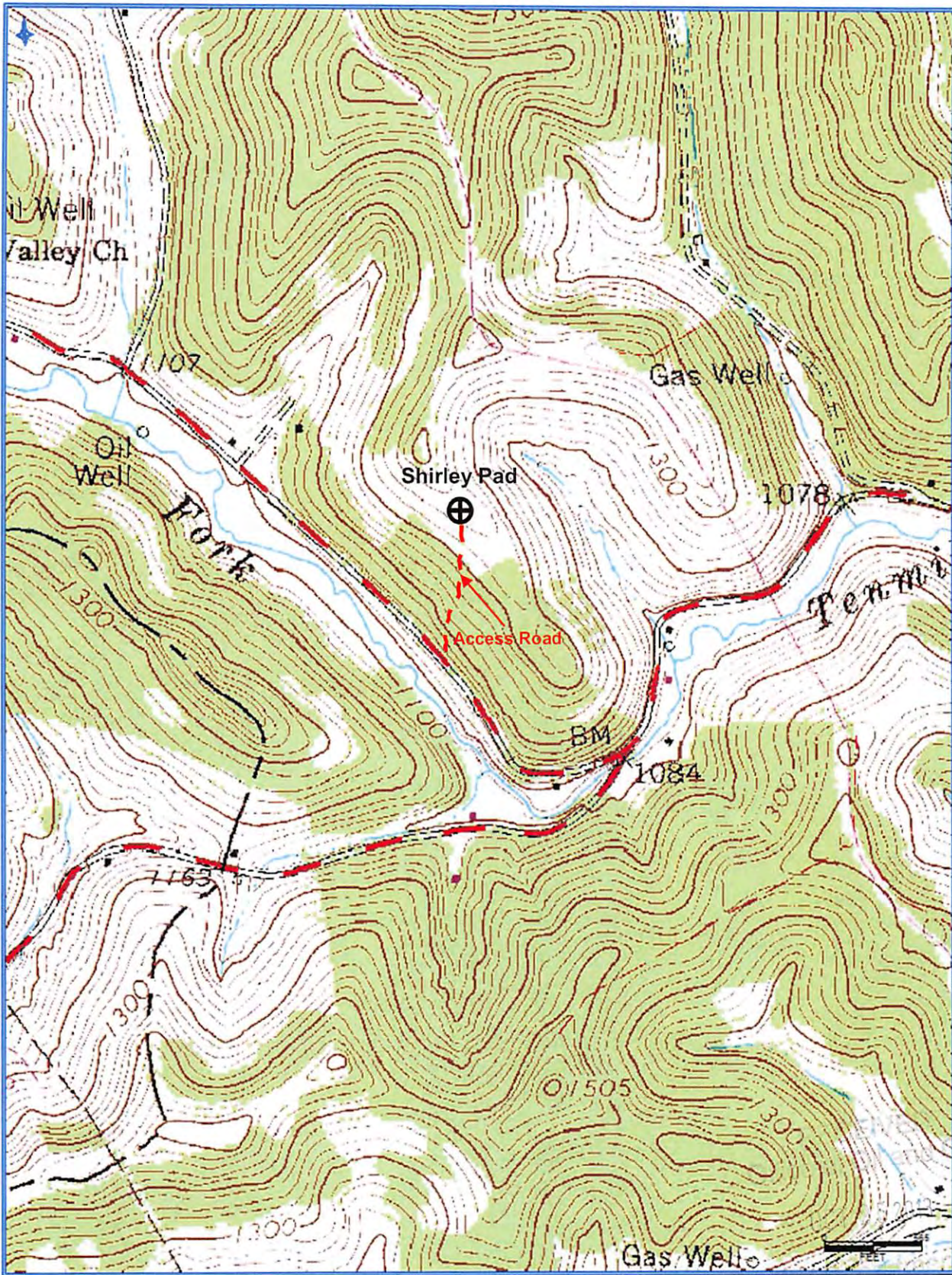
**STATE OF WEST VIRGINIA**  
DEPARTMENT OF ENVIRONMENTAL PROTECTION  
**OIL AND GAS DIVISION**

DATE: October 18 2013  
OPERATOR'S WELL NO. Avery Unit 1H  
API WELL NO  
47 - 033 - 05796HGA  
STATE COUNTY PERMIT

WELL TYPE:  OIL  GAS  LIQUID INJECTION  WASTE DISPOSAL  
(IF GAS) PRODUCTION:  STORAGE  DEEP  SHALLOW  
LOCATION: ELEVATION: 1328' WATERSHED: Tenmile Creek QUADRANGLE: Big Isaac  
DISTRICT: Union Harold Gaines, et al; Helen Marie Swiger, et al 21669 COUNTY: Harrison  
SURFACE OWNER: Shirley Jo Davis Chester B. Queen & Ethel G. Queen, et al 002968 ACREAGE: 87.70 60; 60; 71  
ROYALTY OWNER: Cynthia Lucas, et al; Hoy W. Childers & Opal Childers, et al; CNX Gas Company LLC LEASE NO: DAD36726 ACREAGE: 43; 48; 112.64; 48.3  
PROPOSED WORK:  DRILL  CONVERT  DRILL DEEPER  FRACTURE OR STIMULATE  PLUG OFF OLD FORMATION  
 PERFORATE NEW FORMATION  OTHER PHYSICAL CHANGE IN WELL (SPECIFY) \_\_\_\_\_ 7,500' TVD  
 PLUG AND ABANDON CLEAN OUT AND REPLUG TARGET FORMATION: Marcellus Shale ESTIMATED DEPTH: 17,300' MD

WELL OPERATOR: Antero Resources Corporation DESIGNATED AGENT: Dianna Stamper - CT Corporation System  
ADDRESS: 1625 17th Street ADDRESS: 5400 D Big Tyler Road  
Denver, CO 80202 Charleston, WV 25313

11/29/2013



**Antero Resources Corporation**  
Appalachian Basin  
Avery Unit 1H  
Harrison County

Quadrangle: Big Isaac  
Watershed: Headwaters Tennile Creek  
District: Union  
Date: 9-11-2013