

# BOGGESS A NORTH UNIT 6H

LONGITUDE: 80°22'30"

14,734'

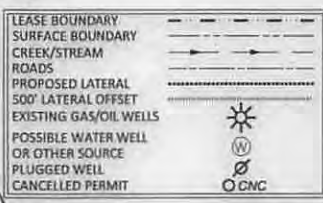
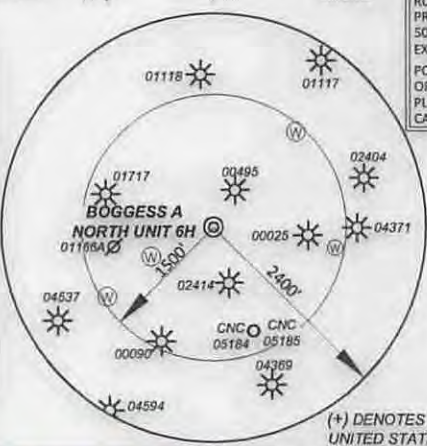
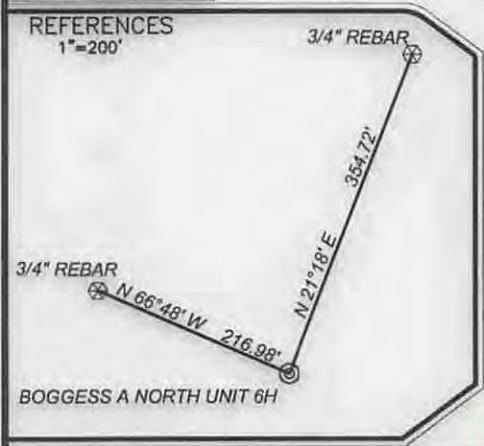
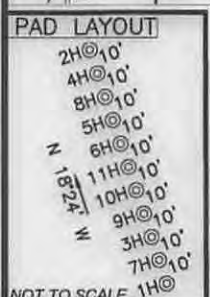
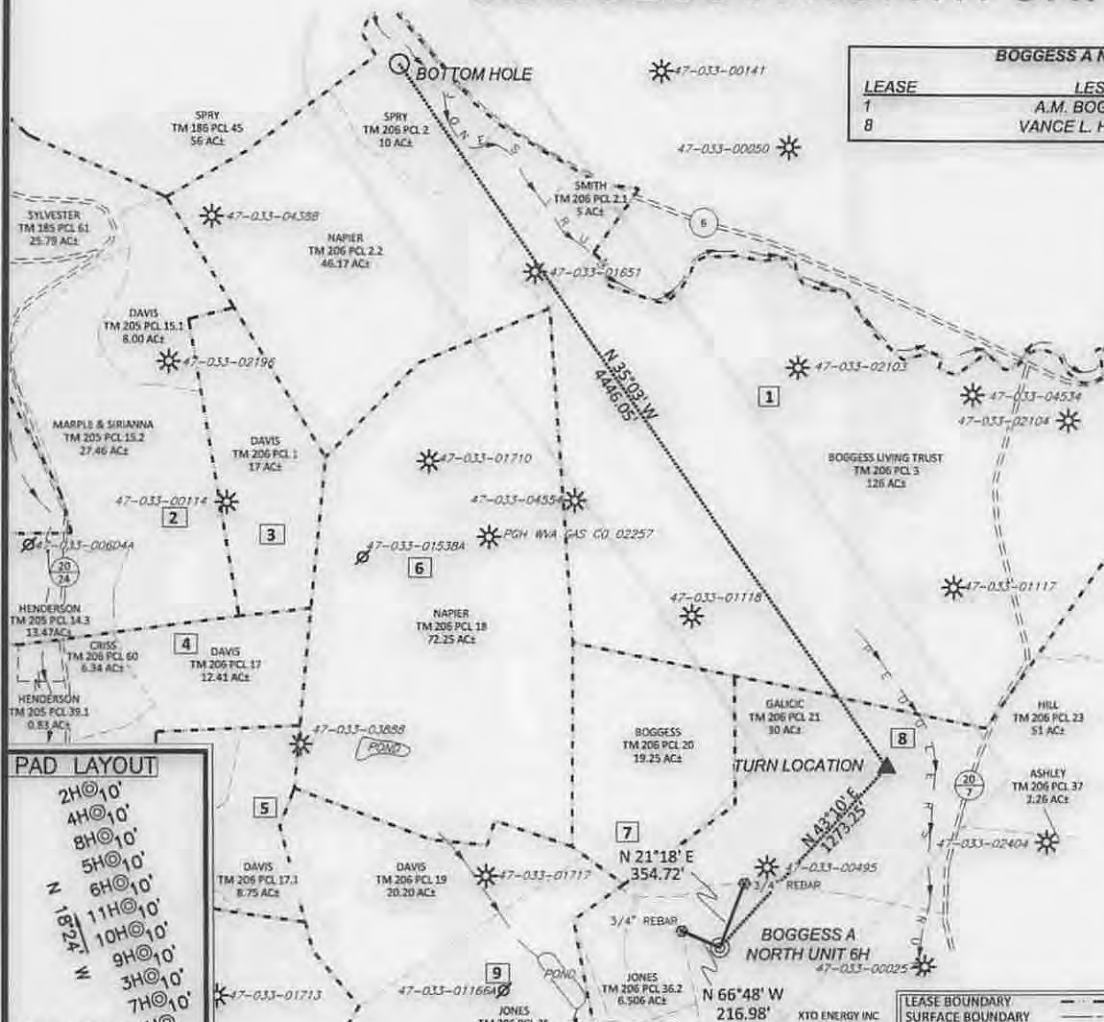
SURVEYED LATITUDE 39°22'34.4"

LEASE	LESSOR	ACREAGE
1	A.M. BOGGESS et al	180.75±
8	VANCE L. HORNOR et al	186.5±

BOGGESS A NORTH UNIT 6H SURFACE HOLE	BOGGESS A NORTH UNIT 6H TURN LOCATION
STATE PLANE COORDINATES NORTH ZONE-(NAD 27) (N) 320371 (E) 1749626	STATE PLANE COORDINATES NORTH ZONE-(NAD 27) (N) 321299 (E) 1750397
L & L DECIMAL NAD 27 39.376217 80.386056	L & L DECIMAL NAD 27 39.378780 80.383008
UTM (NAD 83) ZONE 17 METERS (N) 4358716 (E) 552896	UTM (NAD 83) ZONE 17 METERS (N) 4359004 (E) 553157

BOGGESS A NORTH UNIT 6H BOTTOM HOLE
STATE PLANE COORDINATES NORTH ZONE-(NAD 27) (N) 324939 (E) 1747843
L & L DECIMAL NAD 27 39.388711 80.392169
UTM (NAD 83) ZONE 17 METERS (N) 4360100 (E) 552360

- NOTES ON SURVEY
- NO OCCUPIED DWELLINGS OR BUILDINGS 2500 SQUARE FEET OR LARGER USED TO HOUSE OR SHELTER DAIRY CATTLE OR POULTRY HUSBANDRY WITHIN 625' OF THE CENTER OF THE WELL PAD WERE OBSERVED.
  - NO WATER WELLS OR DEVELOPED SPRINGS USED FOR HUMAN OR DOMESTIC ANIMAL CONSUMPTION WERE FOUND WITHIN 250'.
  - SURFACE OWNERSHIP TAKEN FROM THE HARRISON COUNTY TAX ASSESSOR AND COUNTY CLERK OFFICES IN JULY, 2014.
  - WELL LATITUDE AND LONGITUDE FROM SURVEY GRADE (OPUS SOLUTION).
  - TIES TO CORNERS AND REFERENCES BASED ON WV STATE PLANE COORDINATE SYSTEM, NAD 27 NORTH ZONE.
  - LEASE INFORMATION PROVIDED BY XTO ENERGY, INC.



99 Cambridge Place Bridgeport, WV 26330  
Toll Free 855-488-9539  
Fax 304-933-3327



Civil & Environmental Consultants, Inc.

DATE JAN. 26, 2015  
SCALE 1" = 1000' ACCURACY 1/2500  
OPERATORS WELL No. BOGGESS A NORTH UNIT 6H  
47 - 033 - 05842 H6A  
API No.

TYPE OF WELL:

GAS:  
Production  Storage  \*Deep  \*Shallow

PROPOSED WORK ON LOCATION:

Drill  Drill Deeper  Redrill  Convert   
Fracture/ Stimulate  \*Plug off to Formation   
Perforate New Formation  Plug and Abandon   
Clean/ Replug  Other Than Above   
If "Other" Please see Details below-  
DETAILS OF PROPOSED WORK

\*TARGET FORMATION MARCELLUS  
ESTIMATED DEPTH TVD: 7,100', TMD: 12,000'

WELL OPERATOR XTO ENERGY INC.  
ADDRESS 810 HOUSTON STREET  
FORT WORTH, TEXAS 76102



I, the undersigned, hereby certify that this plat is correct to the best of my knowledge and belief and shows all the information required by law and the rules issued and prescribed by the Division of Environmental Protection.

*Richard E. Adams*

STATE OF WEST VIRGINIA  
DIVISION OF ENVIRONMENTAL PROTECTION  
OFFICE OF OIL AND GAS



WELL AREA & LOCATION INFORMATION:

ELEVATION SOURCE GPS (OPUS)  
ELEVATION 1183'  
WATERSHED REESES RUN DISTRICT EAGLE  
COUNTY HARRISON TOPO QUAD WALLACE 115  
SURFACE OWNER XTO ENERGY INC.  
ACREAGE 36.32 ±  
ROYALTY OWNER VANCE L. HORNOR, G.P. HORNOR, J.H. HORNOR, M.L. HORNOR, V.L. HORNOR INVESTMENT COMPANY, et al  
LEASE ACREAGE 367.25 ±

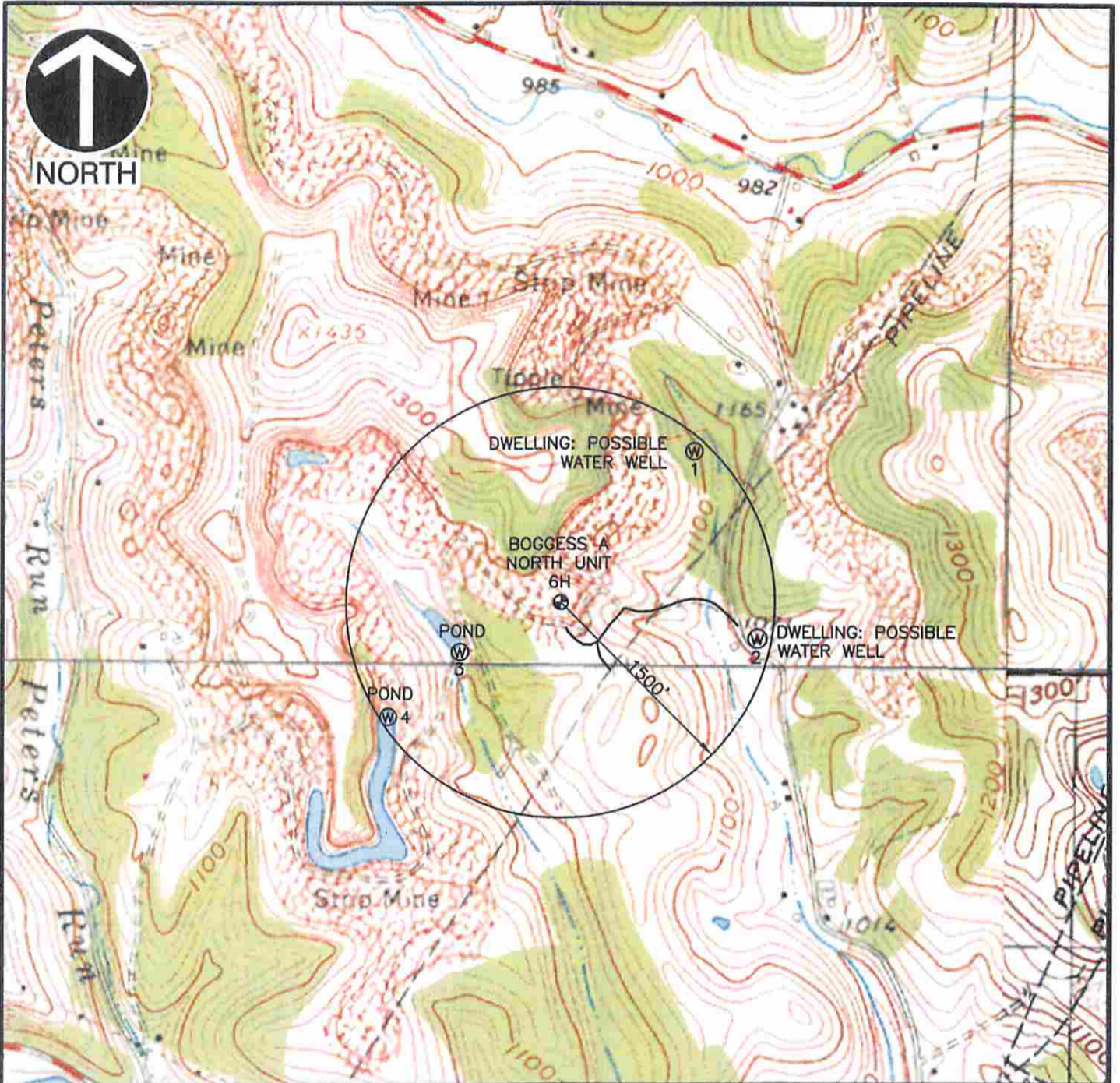
DESIGNATED AGENT GARY BEALL  
ADDRESS P.O. BOX 1008  
JANE LEW, WV 26385

02/13/2015





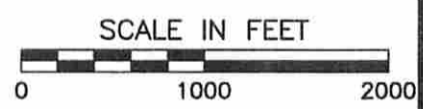
NORTH



P:\2014\142-355\CADD\DWG\142355-SRV-WELL PLAT 6H-WATER TOPO.dwg[6H WATER TOPO] LS:(9/4/2014 - dmartinez) - LP: 9/5/2014 1:33 PM

**REFERENCE**

1. TOPOGRAPHIC INFORMATION BASED UPON BOGCESS UNIT. SURVEY CONDUCTED BY ADAMS LAND SURVEYING, PLLC IN SEPT. 07, 2012 AND UPDATED BY CIVIL AND ENVIRONMENTAL CONSULTANTS, INC. ON SEPT 03, 2014.
2. U.S.G.S. 7.5' TOPOGRAPHIC MAP, WALLACE QUADRANGLE, WV. DATED: 1960, PHOTOREVISED: 1978



**Civil & Environmental Consultants, Inc.**

99 Cambridge Place - Bridgeport, WV 26330  
Ph: 304.933.3119 · Fax: 304.933.3327  
www.cecinc.com

XTO ENERGY INC.  
BOGCESS A UNIT  
EAGLE DISTRICT  
HARRISON COUNTY, WV

WATERSHED: REESE'S RUN, A TRIBUTARY OF  
TENMILE CREEK

DRAWN BY:	DAM	CHECKED BY:	REA	APPROVED BY:	DEM	FIGURE NO.:
DATE:	SEPT. 3, 2014	DWG SCALE:	1"=1000'	PROJECT NO:	142-355	

RECEIVED  
Office of Oil and Gas

OCT 06 2014

WV Department of  
Environmental Protection

02/13/2015