

**Antero Resources  
Well No. Avery Unit 1H  
Antero Resources  
Corporation**



| Bearing       | Distance |
|---------------|----------|
| L1 S 66°11' E | 604.8'   |
| L2 S 88°51' W | 923.6'   |
| L3 S 46°32' W | 1394.0'  |
| L4 S 00°04' E | 1127.2'  |
| L5 S 87°16' W | 846.6'   |

**Well Location References**  
Scale: 1" = 400'

5/8" Rebar w/ Cap  
AZ124° 55'1"

5/8" Rebar w/ Cap  
AZ190° 55'4"

**Proposed Well No. Avery Unit 1H**  
Shirley Drill Pad

*I, the undersigned, hereby certify that this plat is correct to the best of my knowledge and belief and shows all the information required by law and the rules issued and prescribed by the Department of Environmental Protection.*

*Kenneth J. Plum*  
Kenneth J. Plum, P.S. 2216

**Notes:**  
West Virginia Coordinate System of 1927, North Zone based upon Differential GPS Measurements.  
Well No. Avery Unit 1H Top Hole coordinates are  
N: 261,096.55' Latitude: 39°12'44.44"  
E: 1,710,542.76' Longitude: 80°31'17.63"  
Bottom Hole coordinates are  
N: 269,938.29' Latitude: 39°14'11.43"  
E: 1,706,966.65' Longitude: 80°32'04.36"  
UTM Zone 17, NAD 1983  
Top Hole Coordinates Bottom Hole Coordinates  
N: 4,340,460.283m N: 4,343,135.770m  
E: 541,320.299m E: 540,185.919m  
Plat orientation and corner and well references are based upon the grid north meridian.  
Well location references are based upon the magnetic meridian.

FILE NO: 312-36-U-12  
DRAWING NO: Avery 1H Well Plat\_Rev  
SCALE: 1" = 1200'  
MINIMUM DEGREE OF ACCURACY: Submeter  
PROVEN SOURCE OF ELEVATION: WVDOT, Bridgeport, WV

**STATE OF WEST VIRGINIA**  
DEPARTMENT OF ENVIRONMENTAL PROTECTION  
**OIL AND GAS DIVISION**

DATE: January 15, 2016  
OPERATOR'S WELL NO. Avery Unit 1H  
API WELL NO. **HUA**  
47 - 033 - **05880**  
STATE COUNTY PERMIT

WELL TYPE:  OIL  GAS  LIQUID INJECTION  WASTE DISPOSAL  
(IF GAS) PRODUCTION:  STORAGE  DEEP  SHALLOW

LOCATION: ELEVATION: Existing - 1342' Proposed - 1328'

DISTRICT: Union

SURFACE OWNER: Shirley Jo Davis

ROYALTY OWNER: Cynthia Lucas, et al; Hoy W. Childers & Opal Childers, et al; CNX Gas Company LLC

PROPOSED WORK:  DRILL  CONVERT  DRILL DEEPER  FRACTURE OR STIMULATE  PLUG OFF OLD FORMATION  
 PERFORATE NEW FORMATION  OTHER PHYSICAL CHANGE IN WELL (SPECIFY)

PLUG AND ABANDON  CLEAN OUT AND REPLUG TARGET FORMATION: Marcellus Shale ESTIMATED DEPTH: 7,500' TVD 17,300' MD

WELL OPERATOR: Antero Resources Corporation  
ADDRESS: 1615 Wynkoop Street, Denver, CO 80202

DESIGNATED AGENT: Dianna Stamper - CT Corporation System  
ADDRESS: 5400 D Big Tyler Road, Charleston, WV 25313

WATERSHED: Tenmile Creek

QUADRANGLE: Big Isaac

COUNTY: Harrison

ACREAGE: 87.70 60; 60; 71  
150; 145; 44  
43; 48; 112.64; 48.3

LEASE NO: DAD36726

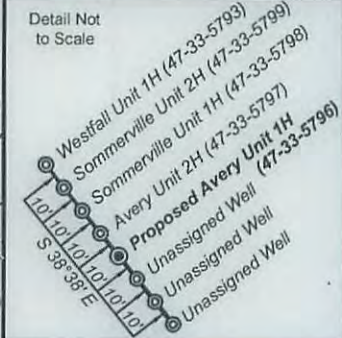
03/25/2016



**Legend**

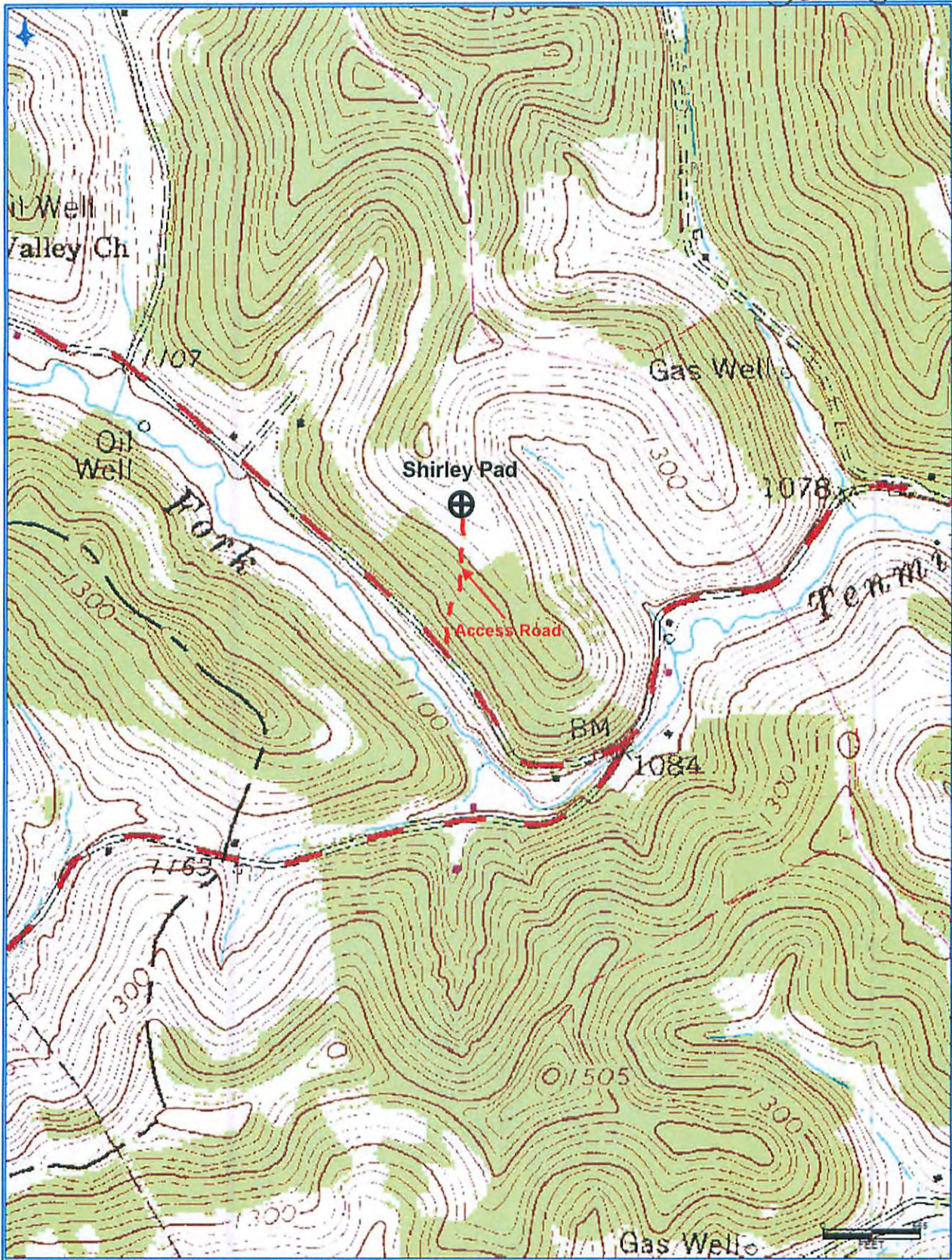
- Proposed gas well
- Found Monument (as noted)
- Creek or Drain
- Existing Road
- Surface boundary (approx.)
- Interior surface tracts (approx.)

Detail Not to Scale



13,645' to Top Hole

SEAL



**Antero Resources Corporation**  
Appalachian Basin  
Avery Unit 1H  
Harrison County

Quadrangle: Big Isaac  
Watershed: Headwaters Tenmile Creek  
District: Union  
Date: 9-11-2013