



west virginia department of environmental protection

Office of Oil and Gas
601 57th Street, S.E.
Charleston, WV 25304
(304) 926-0450
fax: (304) 926-0452

Austin Caperton, Cabinet Secretary
www.dep.wv.gov

Monday, October 15, 2018
PERMIT MODIFICATION APPROVAL
Horizontal 6A / New Drill

ARSENAL RESOURCES LLC
6031 WALLACE ROAD EXTENSION
SUITE 603
WEXFORD, PA 15090

Re: Permit Modification Approval for PRITT SOUTH 211
47-033-05903-00-00

Modified lateral spacing and length

ARSENAL RESOURCES LLC

The Office of Oil and Gas has reviewed the attached permit modification for the above referenced permit. The attached modification has been approved and well work may begin. Please be reminded that the oil and gas inspector is to be notified twenty-four (24) hours before permitted well work is commenced.

If there are any questions, please feel free to contact me at (304) 926-0450.

A handwritten signature in blue ink, appearing to read 'James A. Martin', is positioned above the printed name and title.

James A. Martin
Chief

Operator's Well Number: PRITT SOUTH 211
Farm Name: IRA & LAURA PRITT
U.S. WELL NUMBER: 47-033-05903-00-00
Horizontal 6A New Drill
Date Modification Issued: October 15, 2018

Promoting a healthy environment.

WW-6B
(04/15)

API NO. 47-033 - 05903 MOD

OPERATOR WELL NO. Pritt South 211

Well Pad Name: Pritt South

STATE OF WEST VIRGINIA
DEPARTMENT OF ENVIRONMENTAL PROTECTION, OFFICE OF OIL AND GAS
WELL WORK PERMIT APPLICATION

1) Well Operator: Arsenal Resources 494519412 Harrison Simpson Brownton
Operator ID County District Quadrangle

2) Operator's Well Number: Pritt South 211 Well Pad Name: Pritt South

3) Farm Name/Surface Owner: Ira and Laura Pritt Public Road Access: County Route 17

4) Elevation, current ground: 1,352.00' Elevation, proposed post-construction: 1,354.80'

5) Well Type (a) Gas Oil Underground Storage

Other

(b) If Gas Shallow Deep

Horizontal

SEP 01 2015
8/15/2015

6) Existing Pad: Yes or No Yes

7) Proposed Target Formation(s), Depth(s), Anticipated Thickness and Expected Pressure(s):
Marcellus Shale, 7799.0ft (TVD Heel) - 7799.0ft (TVD Toe), 100ft, 0.5 psi/ft Base of Marcellus Shale, 7899.0ft (TVD Heel) - 7899.0ft (TVD Toe)

8) Proposed Total Vertical Depth: 7,883 ft

9) Formation at Total Vertical Depth: Marcellus shale

10) Proposed Total Measured Depth: 15,266 ft

11) Proposed Horizontal Leg Length: 6,846 ft

12) Approximate Fresh Water Strata Depths: 15', 45', 90', 219', 257', 300', 315', 345', and 385' *

13) Method to Determine Fresh Water Depths: Offsetting wells reported water depths (033-00660, 033-00950, 033-00960, 033-00976, 033-00980, 033-03262)

14) Approximate Saltwater Depths: 1400'

15) Approximate Coal Seam Depths: Bakerstown 492', Brush Creek 591', Upper Freeport 652', Lower Freeport 712', Upper Kittanning 787', Middle Kittanning 847', Lower Kittanning 860'

16) Approximate Depth to Possible Void (coal mine, karst, other): None

17) Does Proposed well location contain coal seams directly overlying or adjacent to an active mine? Yes No

(a) If Yes, provide Mine Info: Name: _____

Depth: _____

Seam: _____

Owner: _____

RECEIVED
Office of Oil and Gas

AUG 20 2018

WV Department of
Environmental Protection

18) **CASING AND TUBING PROGRAM**

| TYPE | Size (in) | New or Used | Grade | Weight per ft. (lb/ft) | FOOTAGE: For Drilling (ft) | INTERVALS: Left in Well (ft) | CEMENT: Fill-up (Cu. Ft.)/CTS |
|--------------|-----------|-------------|-------|------------------------|----------------------------|------------------------------|-------------------------------|
| Conductor | 24 | New | H-40 | 94 | 80 | 80 | CTS |
| Fresh Water | 13.375 | New | J-55 | 54.5 | 450 | 450 | CTS |
| Coal | | | | | | | |
| Intermediate | 9.625 | New | J-55 | 40 | 1,500 | 1,500 | CTS |
| Production | 5.5 | New | P-110 | 20 | 15,266 | 15,266 | TOC @ 1,350' MD |
| Tubing | | | | | | | |
| Liners | | | | | | | |

** Best Casing Possible*

*SDW
8/15/2018*

| TYPE | Size (in) | Wellbore Diameter (in) | Wall Thickness (in) | Burst Pressure (psi) | Anticipated Max. Internal Pressure (psi) | Cement Type | Cement Yield (cu. ft./k) |
|--------------|-----------|------------------------|---------------------|----------------------|--|-------------------|--------------------------|
| Conductor | 24 | 36 | | | 0 | Class A, 3% CaCl2 | 1.20 |
| Fresh Water | 13.375 | 17.5 | 0.38 | 2730 | 900 | Class A, 3% CaCl2 | 1.20 |
| Coal | | | | | | | |
| Intermediate | 9.625 | 12.25 | 0.395 | 3950 | 1500 | Class A, 3% CaCl2 | 1.29 |
| Production | 5.5 | 8.5-8.75 | 0.361 | 12,640 | 9,500 | Class A/50.50 Poz | 1.29/1.34 |
| Tubing | | | | | 5,000 | | |
| Liners | | | | | N/A | | |

PACKERS

| | | | | |
|-------------|--|--|--|--|
| Kind: | | | | |
| Sizes: | | | | |
| Depths Set: | | | | |

RECEIVED
Office of Oil and Gas

AUG 20 2018

WV Department of
Environmental Protection

19) Describe proposed well work, including the drilling and plugging back of any pilot hole:

The well will be started with a conductor rig drilling a 36" hole to Conductor programmed depth then running 24" casing and circulate cement back to surface. The conductor rig will move out and the drilling rig will move in and rig up. The drilling rig will then spud a 17 1/2" hole and drill to fresh water casing (Surface) to the programmed depth, Run 13- 3/8" casing and cement to surface. The rig will continue drilling a 12- 1/4" intermediate hole to the programmed depth, run 9- 5/8" casing and cement to surface. The rig will then continue to drill an 8- 3/4" hole to a designed KOP. We will then start drilling the curve and lateral section to the programmed total measured depth, run 5 1/2" casing and cement according to the program.

20) Describe fracturing/stimulating methods in detail, including anticipated max pressure and max rate:

The well will be completed using a plug and perforation method and stimulated with a slickwater and sand slurry. The anticipated maximum rate will be 90 bpm and the maximum pressure will be 9,500 psi.

21) Total Area to be disturbed, including roads, stockpile area, pits, etc., (acres): 29.78

22) Area to be disturbed for well pad only, less access road (acres): 9.15

23) Describe centralizer placement for each casing string:

24"- No centralizers 13 3/8" – one bow spring centralizer on every other joint 9 5/8" – one bow spring centralizer every third joint from TD to surface 5 1/2" – one semi rigid centralizer on every joint from TD of casing to end of curve. Then every other joint to KOP. Every third joint from KOP to 1,600'; there will be no centralizers from 1,600 to surface.

24) Describe all cement additives associated with each cement type:

24" will be circulated to surface. The 13 3/8" casing will be cemented to surface with Class A cement and no greater than 3% CaCl (calcium chloride). The 9 5/8" casing will be cemented to surface with Class A cement, & no greater than 3% calcium chloride. The 5 1/2" production string will be cemented back to 1,350' (+/- 150' above the casing shoe for the 9 5/8") with Class A and 50/50 Poz cement retarded (to extend pumpability) cellophane flaked for fluid loss, Bentonite gel as an extender (increased pumpability and fluid loss), a defoaming agent to decrease cement foaming during mixing to insure the cement is of proper weight to placement and possibly gypsum gas blocking additive to aid in blocking/gas migration (in combination with other additive mentioned here, helps cement achieve a "right angle" set) during the plastic phase of the cement set-up.

RECEIVED
Office of Oil and Gas

25) Proposed borehole conditioning procedures:

AUG 20 2018

Top holes will be drilled with fresh water KOP. At KOP, the wellbore will be loaded with synthetic oil based mud, barite-weighted mud system with such properties as to build a filter-cake on the face of the bore-hole. This will provide lubricity as well as stabilizing the well bore. We will begin rotating the drill string and mud will be circulated upon reaching TD until no further cuttings are observed coming across the shaker screens. Once clean mud is circulated back to surface, we will pull three stands of drill pipe, load the hole, pull three strands and load the hole. The weight indicator on the rig will be monitored for any occurrences of drag and if any are noticed, we will re-run the previous stand of pipe pulled across and circulate 2x bottoms up while watching shakers for signs of cuttings. Once at the base curve, the string will be continuously rotated while pumping 2x bottoms up. We will pull three stands and fill the hole until we reach the vertical section of the well.

*Note: Attach additional sheets as needed.



Purpose

The purpose of this pad-specific Hydraulic Fracturing Monitoring Plan is to identify and notify conventional well operators near Arsenal Resources hydraulic fracturing in Harrison County, WV prior to hydraulic fracturing at the following Arsenal Resources wells on the Pritt South Pad, Well 211.

Due to the apparent presence of unique geological conditions, the potential for communication between deep geologic zones exists in this area. This potential communication, via natural gas, water, or both, may occur between hydraulically fractured wells in the Marcellus formation (approximately 7,900' TVD) and existing conventional natural gas wells in the partially-depleted, relatively high permeability Benson formation (approximately 4,600' TVD).

The plan is being implemented as an additional safety measure to be utilized in conjunction with best management practices and emergency action plans for this site. These additional measures include pre-notification of conventional well operators of the timing and location of the hydraulic fracturing, establishment of measures conventional well operators should implement, and assurance that the Division of Oil and Gas is notified of the timeline, as well as any issues that may arise during fracturing.

1. Communications with Conventional Operators.

Arsenal Resources, using available data (WV Geological Survey, WVDEP Website, and IHS data service), has identified all known conventional wells and well operators within 500 feet of this pad and the lateral sections. A map showing these wells along with a list of the wells and operators is included in Attachment A.

Upon approval of this plan, Arsenal Resources will notify these operators, via letter, of the hydraulic fracturing schedule for these wells. A copy of this letter is included in Attachment B.

The letter provides recommendations to these conventional operators to 1) increase their monitoring of their wells during that time period, 2) ensure that their well head equipment is sound, and 3) provide immediate notification to Arsenal Resources and the OOG in the event of any changes in their well conditions.

Specifically, the letter recommends that conventional well operators conduct the following activities during and after fracturing operations:

1. Inspect their surface equipment prior to fracturing to establish integrity and establish pre-frac well conditions.
2. Observe wells closely during and after fracturing and monitor for abnormal increases in water, gas or pressure.
3. Inspect or install master valves rated to 3,000 psi or other necessary equipment for wellhead integrity.
4. Notify the OOG and Arsenal Resources if any changes in water, gas production, pressure or other anomalies are identified.

RECEIVED
Office of Oil and Gas

AUG 20 2018

WV Department of
Environmental Protection



2. Reporting

Arsenal Resources will provide information relating to the hydraulic fracturing schedule, communication with conventional operators, and ongoing monitoring of the work upon request of OOG or immediately after any event of any noted abnormalities.

RECEIVED
Office of Oil and Gas
AUG 20 2018
WV Department of
Environmental Protection

33-05903 MOD

Area of Review Report - **Pritt South** Pad, **211** Lateral, **Harrison** County, WV

| Well Name | API Number | Operator Name / Address | Well Type | Latitude | Longitude | Total Depth | Perforated Formation(s) | Producing Zones not Perforated |
|-------------------|-------------|--------------------------------|--------------------|-----------|------------|-------------|-------------------------|--------------------------------|
| Ira Pritt 1 | 033-00500-P | Petroleum Development Corp. | Plugged/06/06/2002 | 39.244727 | -80.190531 | 2450 | Big Injun, Fifth | NA |
| Glenn Smith 1 | 033-00494 | Alliance Petroleum Corporation | Existing | 39.24777 | -80.194053 | 4515 | Benson | NA |
| Retha M. Dawson 2 | 033-02428 | Braxton Oil & Gas Corp. | Existing | 39.261133 | -80.202128 | 4369 | Fifth, Balltown, Benson | NA |

RECEIVED
Office of Oil and Gas
AUG 20 2018
WV Department of
Environmental Protection

AOR Attachment "A"



Click or tap to enter a date.

Braxton Oil & Gas Corp.

Address

State

RE: Click or tap here to enter text.

Dear Sir/Madam,

Arsenal Resources has developed a Marcellus pad Pritt South 211 Pad, located in Harrison County, WV. As an owner or operator of conventional natural gas wells in this area, we are requesting your assistance in this matter.

Due to the apparent presence of unique geological conditions, the potential for communication between deep geologic zones exists in this area. This potential communication, via natural gas, water, or both, may occur between hydraulically fractured wells in the Marcellus formation (approximately 7,900' TVD) and existing conventional natural gas wells included in the attached well list for which you are believed to be the operator.

ARSENAL RESOURCES anticipates conducting hydraulic fracturing at the Pritt South 211 Pad during the Quarter of 2018. We have identified conventional natural gas wells operated by your company within 500' (lateral distance) of our newly planned wells. Plats for each well on this pad are attached.

We recommend that conventional well operators conduct the following activities before, during and after fracturing operations:

1. Inspect surface equipment, prior to fracturing, to establish integrity and establish well conditions.
2. Observe wells closely during and after fracturing and monitor for abnormal increases in water, gas, or pressure.
3. Inspect or install master valves rated to 3,000 psi or other necessary equipment for wellhead integrity.
4. Notify the OOG and ARSENAL RESOURCES if any changes in water, gas production, pressure or other anomalies are identified.

Please feel free to contact me at 724-940-1218 with any questions or comments. You may also contact the WV Office of Oil and Gas at 304-926-0499.

Sincerely,

Kelly Davis
Permitting Specialist

AOR- Attachment "B"



ARSENAL
R E S O U R C E S

Arsenal Resources

Harrison County, West Virginia NAD 83

Pritt South Pad

Pritt South #211

Wellbore #1

Plan: Design #4

QES Well Planning Report

26 June, 2018





Well Planning Report



| | | | |
|------------------|---------------------------------------|-------------------------------------|-----------------------|
| Database: | EDM 5000.1 Single User Db | Local Co-ordinate Reference: | Well Pritt South #211 |
| Company: | Arsenal Resources | TVD Reference: | WELL @ 1381.8usft |
| Project: | Harrison County, West Virginia NAD 83 | MD Reference: | WELL @ 1381.8usft |
| Site: | Pritt South Pad | North Reference: | Grid |
| Well: | Pritt South #211 | Survey Calculation Method: | Minimum Curvature |
| Wellbore: | Wellbore #1 | | |
| Design: | Design #4 | | |

| | | | |
|--------------------|---------------------------------------|----------------------|----------------|
| Project | Harrison County, West Virginia NAD 83 | | |
| Map System: | US State Plane 1983 | System Datum: | Mean Sea Level |
| Geo Datum: | North American Datum 1983 | | |
| Map Zone: | West Virginia Northern Zone | | |

| | | | | | |
|------------------------------|-----------------|---------------------|-------------------|--------------------------|------------------|
| Site | Pritt South Pad | | | | |
| Site Position: | | Northing: | 272,369.26 usft | Latitude: | 39° 14' 44.725 N |
| From: | Map | Easting: | 1,773,918.84 usft | Longitude: | 80° 11' 13.422 W |
| Position Uncertainty: | 0.0 usft | Slot Radius: | 13-3/16 " | Grid Convergence: | -0.44 ° |

| | | | | | | |
|-----------------------------|------------------|-------------|----------------------------|-------------------|----------------------|------------------|
| Well | Pritt South #211 | | | | | |
| Well Position | +N/-S | -373.7 usft | Northing: | 271,995.59 usft | Latitude: | 39° 14' 41.041 N |
| | +E/-W | 124.2 usft | Easting: | 1,774,043.02 usft | Longitude: | 80° 11' 11.808 W |
| Position Uncertainty | | 0.0 usft | Wellhead Elevation: | 0.0 usft | Ground Level: | 1,354.8 usft |

| | | | | | |
|-----------------|-------------|--|--|--|--|
| Wellbore | Wellbore #1 | | | | |
|-----------------|-------------|--|--|--|--|

| Magnetics | Model Name | Sample Date | Declination (°) | Dip Angle (°) | Field Strength (nT) |
|-----------|------------|-------------|-----------------|---------------|---------------------|
| | IGRF2015 | 7/18/2017 | -8.93 | 66.45 | 51,826.43852241 |

| | | | | | |
|---------------|-----------|--|--|--|--|
| Design | Design #4 | | | | |
|---------------|-----------|--|--|--|--|

| | | | | | |
|--------------------------|--------------------------------|---------------------|----------------------|----------------------|--|
| Audit Notes: | | | | | |
| Version: | Phase: | PLAN | Tie On Depth: | 0.0 | |
| Vertical Section: | Depth From (TVD) (usft) | +N/-S (usft) | +E/-W (usft) | Direction (°) | |
| | 0.0 | 0.0 | 0.0 | 331.98 | |

| Plan Sections | | | | | | | | | | |
|-----------------------|-----------------|-------------|-----------------------|--------------|--------------|-------------------------|------------------------|-----------------------|---------|---------------------|
| Measured Depth (usft) | Inclination (°) | Azimuth (°) | Vertical Depth (usft) | +N/-S (usft) | +E/-W (usft) | Dogleg Rate (°/100usft) | Build Rate (°/100usft) | Turn Rate (°/100usft) | TFO (°) | Target |
| 0.0 | 0.00 | 0.00 | 0.0 | 0.0 | 0.0 | 0.00 | 0.00 | 0.00 | 0.00 | |
| 2,500.0 | 0.00 | 0.00 | 2,500.0 | 0.0 | 0.0 | 0.00 | 0.00 | 0.00 | 0.00 | |
| 3,411.9 | 18.24 | 248.06 | 3,396.5 | -53.8 | -133.5 | 2.00 | 2.00 | 0.00 | 248.06 | |
| 6,261.9 | 18.24 | 248.06 | 6,103.5 | -387.0 | -960.8 | 0.00 | 0.00 | 0.00 | 0.00 | |
| 7,173.8 | 0.00 | 0.00 | 7,000.0 | -440.8 | -1,094.3 | 2.00 | -2.00 | 0.00 | 180.00 | VP Pritt South #211 |
| 7,420.0 | 0.00 | 0.00 | 7,246.2 | -440.8 | -1,094.3 | 0.00 | 0.00 | 0.00 | 0.00 | |
| 8,420.0 | 90.00 | 341.00 | 7,882.8 | 161.2 | -1,301.5 | 9.00 | 9.00 | -1.90 | 341.00 | |
| 15,265.7 | 90.00 | 341.00 | 7,882.8 | 6,634.1 | -3,529.9 | 0.00 | 0.00 | 0.00 | 0.00 | PBHL Pritt South # |

RECEIVED
Office of Oil and Gas

AUG 20 2018

WV Department of
Environmental Protection



Well Planning Report



| | | | |
|------------------|---------------------------------------|-------------------------------------|-----------------------|
| Database: | EDM 5000.1 Single User Db | Local Co-ordinate Reference: | Well Pritt South #211 |
| Company: | Arsenal Resources | TVD Reference: | WELL @ 1381.8usft |
| Project: | Harrison County, West Virginia NAD 83 | MD Reference: | WELL @ 1381.8usft |
| Site: | Pritt South Pad | North Reference: | Grid |
| Well: | Pritt South #211 | Survey Calculation Method: | Minimum Curvature |
| Wellbore: | Wellbore #1 | | |
| Design: | Design #4 | | |

| Planned Survey | | | | | | | | | | |
|---------------------------------------|-----------------|-------------|-----------------------|--------------|--------------|-------------------------|-------------------------|------------------------|-----------------------|--|
| Measured Depth (usft) | Inclination (°) | Azimuth (°) | Vertical Depth (usft) | +N/-S (usft) | +E/-W (usft) | Vertical Section (usft) | Dogleg Rate (°/100usft) | Build Rate (°/100usft) | Turn Rate (°/100usft) | |
| 0.0 | 0.00 | 0.00 | 0.0 | 0.0 | 0.0 | 0.0 | 0.00 | 0.00 | 0.00 | |
| 100.0 | 0.00 | 0.00 | 100.0 | 0.0 | 0.0 | 0.0 | 0.00 | 0.00 | 0.00 | |
| 200.0 | 0.00 | 0.00 | 200.0 | 0.0 | 0.0 | 0.0 | 0.00 | 0.00 | 0.00 | |
| 300.0 | 0.00 | 0.00 | 300.0 | 0.0 | 0.0 | 0.0 | 0.00 | 0.00 | 0.00 | |
| 400.0 | 0.00 | 0.00 | 400.0 | 0.0 | 0.0 | 0.0 | 0.00 | 0.00 | 0.00 | |
| 500.0 | 0.00 | 0.00 | 500.0 | 0.0 | 0.0 | 0.0 | 0.00 | 0.00 | 0.00 | |
| 600.0 | 0.00 | 0.00 | 600.0 | 0.0 | 0.0 | 0.0 | 0.00 | 0.00 | 0.00 | |
| 700.0 | 0.00 | 0.00 | 700.0 | 0.0 | 0.0 | 0.0 | 0.00 | 0.00 | 0.00 | |
| 800.0 | 0.00 | 0.00 | 800.0 | 0.0 | 0.0 | 0.0 | 0.00 | 0.00 | 0.00 | |
| 900.0 | 0.00 | 0.00 | 900.0 | 0.0 | 0.0 | 0.0 | 0.00 | 0.00 | 0.00 | |
| 1,000.0 | 0.00 | 0.00 | 1,000.0 | 0.0 | 0.0 | 0.0 | 0.00 | 0.00 | 0.00 | |
| 1,100.0 | 0.00 | 0.00 | 1,100.0 | 0.0 | 0.0 | 0.0 | 0.00 | 0.00 | 0.00 | |
| 1,200.0 | 0.00 | 0.00 | 1,200.0 | 0.0 | 0.0 | 0.0 | 0.00 | 0.00 | 0.00 | |
| 1,300.0 | 0.00 | 0.00 | 1,300.0 | 0.0 | 0.0 | 0.0 | 0.00 | 0.00 | 0.00 | |
| 1,400.0 | 0.00 | 0.00 | 1,400.0 | 0.0 | 0.0 | 0.0 | 0.00 | 0.00 | 0.00 | |
| 1,500.0 | 0.00 | 0.00 | 1,500.0 | 0.0 | 0.0 | 0.0 | 0.00 | 0.00 | 0.00 | |
| 1,600.0 | 0.00 | 0.00 | 1,600.0 | 0.0 | 0.0 | 0.0 | 0.00 | 0.00 | 0.00 | |
| 1,700.0 | 0.00 | 0.00 | 1,700.0 | 0.0 | 0.0 | 0.0 | 0.00 | 0.00 | 0.00 | |
| 1,800.0 | 0.00 | 0.00 | 1,800.0 | 0.0 | 0.0 | 0.0 | 0.00 | 0.00 | 0.00 | |
| 1,900.0 | 0.00 | 0.00 | 1,900.0 | 0.0 | 0.0 | 0.0 | 0.00 | 0.00 | 0.00 | |
| 2,000.0 | 0.00 | 0.00 | 2,000.0 | 0.0 | 0.0 | 0.0 | 0.00 | 0.00 | 0.00 | |
| 2,100.0 | 0.00 | 0.00 | 2,100.0 | 0.0 | 0.0 | 0.0 | 0.00 | 0.00 | 0.00 | |
| 2,200.0 | 0.00 | 0.00 | 2,200.0 | 0.0 | 0.0 | 0.0 | 0.00 | 0.00 | 0.00 | |
| 2,300.0 | 0.00 | 0.00 | 2,300.0 | 0.0 | 0.0 | 0.0 | 0.00 | 0.00 | 0.00 | |
| 2,400.0 | 0.00 | 0.00 | 2,400.0 | 0.0 | 0.0 | 0.0 | 0.00 | 0.00 | 0.00 | |
| Start Build 2.00 | | | | | | | | | | |
| 2,500.0 | 0.00 | 0.00 | 2,500.0 | 0.0 | 0.0 | 0.0 | 0.00 | 0.00 | 0.00 | |
| 2,600.0 | 2.00 | 248.06 | 2,600.0 | -0.7 | -1.6 | 0.2 | 2.00 | 2.00 | 0.00 | |
| 2,700.0 | 4.00 | 248.06 | 2,699.8 | -2.6 | -6.5 | 0.7 | 2.00 | 2.00 | 0.00 | |
| 2,800.0 | 6.00 | 248.06 | 2,799.5 | -5.9 | -14.6 | 1.7 | 2.00 | 2.00 | 0.00 | |
| 2,900.0 | 8.00 | 248.06 | 2,898.7 | -10.4 | -25.9 | 3.0 | 2.00 | 2.00 | 0.00 | |
| 3,000.0 | 10.00 | 248.06 | 2,997.5 | -16.3 | -40.4 | 4.6 | 2.00 | 2.00 | 0.00 | |
| 3,100.0 | 12.00 | 248.06 | 3,095.6 | -23.4 | -58.1 | 6.6 | 2.00 | 2.00 | 0.00 | |
| 3,200.0 | 14.00 | 248.06 | 3,193.1 | -31.8 | -78.9 | 9.0 | 2.00 | 2.00 | 0.00 | |
| 3,300.0 | 16.00 | 248.06 | 3,289.6 | -41.5 | -102.9 | 11.8 | 2.00 | 2.00 | 0.00 | |
| 3,400.0 | 18.00 | 248.06 | 3,385.3 | -52.4 | -130.1 | 14.8 | 2.00 | 2.00 | 0.00 | |
| Start 2850.1 hold at 3411.9 MD | | | | | | | | | | |
| 3,411.9 | 18.24 | 248.06 | 3,396.5 | -53.8 | -133.5 | 15.2 | 2.00 | 2.00 | 0.00 | |
| 3,500.0 | 18.24 | 248.06 | 3,480.3 | -64.1 | -159.1 | 18.2 | 0.00 | 0.00 | 0.00 | |
| 3,600.0 | 18.24 | 248.06 | 3,575.2 | -75.8 | -188.1 | 21.5 | 0.00 | 0.00 | 0.00 | |
| 3,700.0 | 18.24 | 248.06 | 3,670.2 | -87.5 | -217.1 | 24.8 | 0.00 | 0.00 | 0.00 | |
| 3,800.0 | 18.24 | 248.06 | 3,765.2 | -99.1 | -246.2 | 28.1 | 0.00 | 0.00 | 0.00 | |
| 3,900.0 | 18.24 | 248.06 | 3,860.2 | -110.8 | -275.2 | 31.4 | 0.00 | 0.00 | 0.00 | |
| 4,000.0 | 18.24 | 248.06 | 3,955.1 | -122.5 | -304.2 | 34.7 | 0.00 | 0.00 | 0.00 | |
| 4,100.0 | 18.24 | 248.06 | 4,050.1 | -134.2 | -333.2 | 38.0 | 0.00 | 0.00 | 0.00 | |
| 4,200.0 | 18.24 | 248.06 | 4,145.1 | -145.9 | -362.3 | 41.4 | 0.00 | 0.00 | 0.00 | |
| 4,300.0 | 18.24 | 248.06 | 4,240.1 | -157.6 | -391.3 | 44.7 | 0.00 | 0.00 | 0.00 | |
| 4,400.0 | 18.24 | 248.06 | 4,335.0 | -169.3 | -420.3 | 48.0 | 0.00 | 0.00 | 0.00 | |
| 4,500.0 | 18.24 | 248.06 | 4,430.0 | -181.0 | -449.4 | 51.3 | 0.00 | 0.00 | 0.00 | |
| 4,600.0 | 18.24 | 248.06 | 4,525.0 | -192.7 | -478.4 | 54.6 | 0.00 | 0.00 | 0.00 | |
| 4,700.0 | 18.24 | 248.06 | 4,620.0 | -204.4 | -507.4 | 57.9 | 0.00 | 0.00 | 0.00 | |
| 4,800.0 | 18.24 | 248.06 | 4,715.0 | -216.1 | -536.4 | 61.2 | 0.00 | 0.00 | 0.00 | |
| 4,900.0 | 18.24 | 248.06 | 4,809.9 | -227.8 | -565.5 | 64.6 | 0.00 | 0.00 | 0.00 | |
| 5,000.0 | 18.24 | 248.06 | 4,904.9 | -239.4 | -594.5 | 67.9 | 0.00 | 0.00 | 0.00 | |



Well Planning Report



| | | | |
|------------------|---------------------------------------|-------------------------------------|-----------------------|
| Database: | EDM 5000.1 Single User Db | Local Co-ordinate Reference: | Well Pritt South #211 |
| Company: | Arsenal Resources | TVD Reference: | WELL @ 1381.8usft |
| Project: | Harrison County, West Virginia NAD 83 | MD Reference: | WELL @ 1381.8usft |
| Site: | Pritt South Pad | North Reference: | Grid |
| Well: | Pritt South #211 | Survey Calculation Method: | Minimum Curvature |
| Wellbore: | Wellbore #1 | | |
| Design: | Design #4 | | |

| Planned Survey | | | | | | | | | | |
|---------------------------------------|-----------------|-------------|-----------------------|--------------|--------------|-------------------------|-------------------------|------------------------|-----------------------|--|
| Measured Depth (usft) | Inclination (°) | Azimuth (°) | Vertical Depth (usft) | +N/-S (usft) | +E/-W (usft) | Vertical Section (usft) | Dogleg Rate (°/100usft) | Build Rate (°/100usft) | Turn Rate (°/100usft) | |
| 5,100.0 | 18.24 | 248.06 | 4,999.9 | -251.1 | -623.5 | 71.2 | 0.00 | 0.00 | 0.00 | |
| 5,200.0 | 18.24 | 248.06 | 5,094.9 | -262.8 | -652.6 | 74.5 | 0.00 | 0.00 | 0.00 | |
| 5,300.0 | 18.24 | 248.06 | 5,189.8 | -274.5 | -681.6 | 77.8 | 0.00 | 0.00 | 0.00 | |
| 5,400.0 | 18.24 | 248.06 | 5,284.8 | -286.2 | -710.6 | 81.1 | 0.00 | 0.00 | 0.00 | |
| 5,500.0 | 18.24 | 248.06 | 5,379.8 | -297.9 | -739.6 | 84.4 | 0.00 | 0.00 | 0.00 | |
| 5,600.0 | 18.24 | 248.06 | 5,474.8 | -309.6 | -768.7 | 87.8 | 0.00 | 0.00 | 0.00 | |
| 5,700.0 | 18.24 | 248.06 | 5,569.7 | -321.3 | -797.7 | 91.1 | 0.00 | 0.00 | 0.00 | |
| 5,800.0 | 18.24 | 248.06 | 5,664.7 | -333.0 | -826.7 | 94.4 | 0.00 | 0.00 | 0.00 | |
| 5,900.0 | 18.24 | 248.06 | 5,759.7 | -344.7 | -855.8 | 97.7 | 0.00 | 0.00 | 0.00 | |
| 6,000.0 | 18.24 | 248.06 | 5,854.7 | -356.4 | -884.8 | 101.0 | 0.00 | 0.00 | 0.00 | |
| 6,100.0 | 18.24 | 248.06 | 5,949.7 | -368.1 | -913.8 | 104.3 | 0.00 | 0.00 | 0.00 | |
| 6,200.0 | 18.24 | 248.06 | 6,044.6 | -379.8 | -942.8 | 107.6 | 0.00 | 0.00 | 0.00 | |
| Start Drop -2.00 | | | | | | | | | | |
| 6,261.9 | 18.24 | 248.06 | 6,103.5 | -387.0 | -960.8 | 109.7 | 0.00 | 0.00 | 0.00 | |
| 6,300.0 | 17.48 | 248.06 | 6,139.7 | -391.4 | -971.6 | 110.9 | 2.00 | -2.00 | 0.00 | |
| 6,400.0 | 15.48 | 248.06 | 6,235.6 | -401.9 | -998.0 | 113.9 | 2.00 | -2.00 | 0.00 | |
| 6,500.0 | 13.48 | 248.06 | 6,332.4 | -411.3 | -1,021.1 | 116.6 | 2.00 | -2.00 | 0.00 | |
| 6,600.0 | 11.48 | 248.06 | 6,430.0 | -419.4 | -1,041.2 | 118.9 | 2.00 | -2.00 | 0.00 | |
| 6,700.0 | 9.48 | 248.06 | 6,528.4 | -426.2 | -1,058.0 | 120.8 | 2.00 | -2.00 | 0.00 | |
| 6,800.0 | 7.48 | 248.06 | 6,627.3 | -431.7 | -1,071.7 | 122.3 | 2.00 | -2.00 | 0.00 | |
| 6,900.0 | 5.48 | 248.06 | 6,726.6 | -435.9 | -1,082.2 | 123.5 | 2.00 | -2.00 | 0.00 | |
| 7,000.0 | 3.48 | 248.06 | 6,826.3 | -438.8 | -1,089.4 | 124.4 | 2.00 | -2.00 | 0.00 | |
| 7,100.0 | 1.48 | 248.06 | 6,926.2 | -440.4 | -1,093.4 | 124.8 | 2.00 | -2.00 | 0.00 | |
| Start 246.2 hold at 7173.8 MD | | | | | | | | | | |
| 7,173.8 | 0.00 | 0.00 | 7,000.0 | -440.8 | -1,094.3 | 124.9 | 2.00 | -2.00 | 0.00 | |
| 7,200.0 | 0.00 | 0.00 | 7,026.2 | -440.8 | -1,094.3 | 124.9 | 0.00 | 0.00 | 0.00 | |
| 7,300.0 | 0.00 | 0.00 | 7,126.2 | -440.8 | -1,094.3 | 124.9 | 0.00 | 0.00 | 0.00 | |
| 7,400.0 | 0.00 | 0.00 | 7,226.2 | -440.8 | -1,094.3 | 124.9 | 0.00 | 0.00 | 0.00 | |
| Start DLS 9.00 TFO 341.00 | | | | | | | | | | |
| 7,420.0 | 0.00 | 0.00 | 7,246.2 | -440.8 | -1,094.3 | 124.9 | 0.00 | 0.00 | 0.00 | |
| 7,450.0 | 2.70 | 341.00 | 7,276.2 | -440.1 | -1,094.5 | 125.6 | 9.00 | 9.00 | 0.00 | |
| 7,500.0 | 7.20 | 341.00 | 7,326.0 | -436.0 | -1,095.9 | 129.9 | 9.00 | 9.00 | 0.00 | |
| 7,550.0 | 11.70 | 341.00 | 7,375.3 | -428.2 | -1,098.6 | 138.0 | 9.00 | 9.00 | 0.00 | |
| 7,600.0 | 16.20 | 341.00 | 7,423.8 | -416.9 | -1,102.5 | 149.9 | 9.00 | 9.00 | 0.00 | |
| 7,650.0 | 20.70 | 341.00 | 7,471.2 | -401.9 | -1,107.7 | 165.5 | 9.00 | 9.00 | 0.00 | |
| 7,700.0 | 25.20 | 341.00 | 7,517.3 | -383.5 | -1,114.0 | 184.8 | 9.00 | 9.00 | 0.00 | |
| 7,750.0 | 29.70 | 341.00 | 7,561.6 | -361.7 | -1,121.5 | 207.5 | 9.00 | 9.00 | 0.00 | |
| 7,800.0 | 34.20 | 341.00 | 7,604.0 | -336.7 | -1,130.1 | 233.7 | 9.00 | 9.00 | 0.00 | |
| 7,850.0 | 38.70 | 341.00 | 7,644.2 | -308.6 | -1,139.8 | 263.0 | 9.00 | 9.00 | 0.00 | |
| 7,900.0 | 43.20 | 341.00 | 7,682.0 | -277.6 | -1,150.5 | 295.3 | 9.00 | 9.00 | 0.00 | |
| 7,950.0 | 47.70 | 341.00 | 7,717.1 | -243.9 | -1,162.1 | 330.5 | 9.00 | 9.00 | 0.00 | |
| 8,000.0 | 52.20 | 341.00 | 7,749.2 | -207.7 | -1,174.5 | 368.3 | 9.00 | 9.00 | 0.00 | |
| 8,050.0 | 56.70 | 341.00 | 7,778.3 | -169.3 | -1,187.8 | 408.5 | 9.00 | 9.00 | 0.00 | |
| 8,100.0 | 61.20 | 341.00 | 7,804.1 | -128.8 | -1,201.7 | 450.8 | 9.00 | 9.00 | 0.00 | |
| 8,150.0 | 65.70 | 341.00 | 7,826.4 | -86.5 | -1,216.3 | 494.9 | 9.00 | 9.00 | 0.00 | |
| 8,200.0 | 70.20 | 341.00 | 7,845.2 | -42.7 | -1,231.3 | 540.7 | 9.00 | 9.00 | 0.00 | |
| 8,250.0 | 74.70 | 341.00 | 7,860.3 | 2.4 | -1,246.8 | 587.8 | 9.00 | 9.00 | 0.00 | |
| 8,300.0 | 79.20 | 341.00 | 7,871.5 | 48.4 | -1,262.7 | 635.9 | 9.00 | 9.00 | 0.00 | |
| 8,350.0 | 83.70 | 341.00 | 7,879.0 | 95.1 | -1,278.8 | 684.7 | 9.00 | 9.00 | 0.00 | |
| 8,400.0 | 88.20 | 341.00 | 7,882.5 | 142.3 | -1,295.0 | 733.9 | 9.00 | 9.00 | 0.00 | |
| Start 6845.7 hold at 8420.0 MD | | | | | | | | | | |
| 8,420.0 | 90.00 | 341.00 | 7,882.8 | 161.2 | -1,301.5 | 753.7 | 9.00 | 9.00 | 0.00 | |
| 8,500.0 | 90.00 | 341.00 | 7,882.8 | 236.8 | -1,327.6 | 832.7 | 0.00 | 0.00 | 0.00 | |

RECEIVED
Office of Oil and Gas
AUG 20 2018
WV Department of Environmental Protection



Well Planning Report



| | | | |
|------------------|---------------------------------------|-------------------------------------|-----------------------|
| Database: | EDM 5000.1 Single User Db | Local Co-ordinate Reference: | Well Pritt South #211 |
| Company: | Arsenal Resources | TVD Reference: | WELL @ 1381.8usft |
| Project: | Harrison County, West Virginia NAD 83 | MD Reference: | WELL @ 1381.8usft |
| Site: | Pritt South Pad | North Reference: | Grid |
| Well: | Pritt South #211 | Survey Calculation Method: | Minimum Curvature |
| Wellbore: | Wellbore #1 | | |
| Design: | Design #4 | | |

| Planned Survey | | | | | | | | | | |
|-----------------------|-----------------|-------------|-----------------------|--------------|--------------|-------------------------|-------------------------|------------------------|-----------------------|--|
| Measured Depth (usft) | Inclination (°) | Azimuth (°) | Vertical Depth (usft) | +N/-S (usft) | +E/-W (usft) | Vertical Section (usft) | Dogleg Rate (°/100usft) | Build Rate (°/100usft) | Turn Rate (°/100usft) | |
| 8,600.0 | 90.00 | 341.00 | 7,882.8 | 331.4 | -1,360.1 | 931.4 | 0.00 | 0.00 | 0.00 | |
| 8,700.0 | 90.00 | 341.00 | 7,882.8 | 425.9 | -1,392.7 | 1,030.2 | 0.00 | 0.00 | 0.00 | |
| 8,800.0 | 90.00 | 341.00 | 7,882.8 | 520.5 | -1,425.2 | 1,129.0 | 0.00 | 0.00 | 0.00 | |
| 8,900.0 | 90.00 | 341.00 | 7,882.8 | 615.0 | -1,457.8 | 1,227.7 | 0.00 | 0.00 | 0.00 | |
| 9,000.0 | 90.00 | 341.00 | 7,882.8 | 709.6 | -1,490.3 | 1,326.5 | 0.00 | 0.00 | 0.00 | |
| 9,100.0 | 90.00 | 341.00 | 7,882.8 | 804.2 | -1,522.9 | 1,425.3 | 0.00 | 0.00 | 0.00 | |
| 9,200.0 | 90.00 | 341.00 | 7,882.8 | 898.7 | -1,555.4 | 1,524.0 | 0.00 | 0.00 | 0.00 | |
| 9,300.0 | 90.00 | 341.00 | 7,882.8 | 993.3 | -1,588.0 | 1,622.8 | 0.00 | 0.00 | 0.00 | |
| 9,400.0 | 90.00 | 341.00 | 7,882.8 | 1,087.8 | -1,620.5 | 1,721.6 | 0.00 | 0.00 | 0.00 | |
| 9,500.0 | 90.00 | 341.00 | 7,882.8 | 1,182.4 | -1,653.1 | 1,820.3 | 0.00 | 0.00 | 0.00 | |
| 9,600.0 | 90.00 | 341.00 | 7,882.8 | 1,276.9 | -1,685.6 | 1,919.1 | 0.00 | 0.00 | 0.00 | |
| 9,700.0 | 90.00 | 341.00 | 7,882.8 | 1,371.5 | -1,718.2 | 2,017.8 | 0.00 | 0.00 | 0.00 | |
| 9,800.0 | 90.00 | 341.00 | 7,882.8 | 1,466.0 | -1,750.7 | 2,116.6 | 0.00 | 0.00 | 0.00 | |
| 9,900.0 | 90.00 | 341.00 | 7,882.8 | 1,560.6 | -1,783.3 | 2,215.4 | 0.00 | 0.00 | 0.00 | |
| 10,000.0 | 90.00 | 341.00 | 7,882.8 | 1,655.1 | -1,815.8 | 2,314.1 | 0.00 | 0.00 | 0.00 | |
| 10,100.0 | 90.00 | 341.00 | 7,882.8 | 1,749.7 | -1,848.4 | 2,412.9 | 0.00 | 0.00 | 0.00 | |
| 10,200.0 | 90.00 | 341.00 | 7,882.8 | 1,844.2 | -1,881.0 | 2,511.7 | 0.00 | 0.00 | 0.00 | |
| 10,300.0 | 90.00 | 341.00 | 7,882.8 | 1,938.8 | -1,913.5 | 2,610.4 | 0.00 | 0.00 | 0.00 | |
| 10,400.0 | 90.00 | 341.00 | 7,882.8 | 2,033.4 | -1,946.1 | 2,709.2 | 0.00 | 0.00 | 0.00 | |
| 10,500.0 | 90.00 | 341.00 | 7,882.8 | 2,127.9 | -1,978.6 | 2,808.0 | 0.00 | 0.00 | 0.00 | |
| 10,600.0 | 90.00 | 341.00 | 7,882.8 | 2,222.5 | -2,011.2 | 2,906.7 | 0.00 | 0.00 | 0.00 | |
| 10,700.0 | 90.00 | 341.00 | 7,882.8 | 2,317.0 | -2,043.7 | 3,005.5 | 0.00 | 0.00 | 0.00 | |
| 10,800.0 | 90.00 | 341.00 | 7,882.8 | 2,411.6 | -2,076.3 | 3,104.2 | 0.00 | 0.00 | 0.00 | |
| 10,900.0 | 90.00 | 341.00 | 7,882.8 | 2,506.1 | -2,108.8 | 3,203.0 | 0.00 | 0.00 | 0.00 | |
| 11,000.0 | 90.00 | 341.00 | 7,882.8 | 2,600.7 | -2,141.4 | 3,301.8 | 0.00 | 0.00 | 0.00 | |
| 11,100.0 | 90.00 | 341.00 | 7,882.8 | 2,695.2 | -2,173.9 | 3,400.5 | 0.00 | 0.00 | 0.00 | |
| 11,200.0 | 90.00 | 341.00 | 7,882.8 | 2,789.8 | -2,206.5 | 3,499.3 | 0.00 | 0.00 | 0.00 | |
| 11,300.0 | 90.00 | 341.00 | 7,882.8 | 2,884.3 | -2,239.0 | 3,598.1 | 0.00 | 0.00 | 0.00 | |
| 11,400.0 | 90.00 | 341.00 | 7,882.8 | 2,978.9 | -2,271.6 | 3,696.8 | 0.00 | 0.00 | 0.00 | |
| 11,500.0 | 90.00 | 341.00 | 7,882.8 | 3,073.4 | -2,304.1 | 3,795.6 | 0.00 | 0.00 | 0.00 | |
| 11,600.0 | 90.00 | 341.00 | 7,882.8 | 3,168.0 | -2,336.7 | 3,894.3 | 0.00 | 0.00 | 0.00 | |
| 11,700.0 | 90.00 | 341.00 | 7,882.8 | 3,262.6 | -2,369.2 | 3,993.1 | 0.00 | 0.00 | 0.00 | |
| 11,800.0 | 90.00 | 341.00 | 7,882.8 | 3,357.1 | -2,401.8 | 4,091.9 | 0.00 | 0.00 | 0.00 | |
| 11,900.0 | 90.00 | 341.00 | 7,882.8 | 3,451.7 | -2,434.3 | 4,190.6 | 0.00 | 0.00 | 0.00 | |
| 12,000.0 | 90.00 | 341.00 | 7,882.8 | 3,546.2 | -2,466.9 | 4,289.4 | 0.00 | 0.00 | 0.00 | |
| 12,100.0 | 90.00 | 341.00 | 7,882.8 | 3,640.8 | -2,499.4 | 4,388.2 | 0.00 | 0.00 | 0.00 | |
| 12,200.0 | 90.00 | 341.00 | 7,882.8 | 3,735.3 | -2,532.0 | 4,486.9 | 0.00 | 0.00 | 0.00 | |
| 12,300.0 | 90.00 | 341.00 | 7,882.8 | 3,829.9 | -2,564.5 | 4,585.7 | 0.00 | 0.00 | 0.00 | |
| 12,400.0 | 90.00 | 341.00 | 7,882.8 | 3,924.4 | -2,597.1 | 4,684.5 | 0.00 | 0.00 | 0.00 | |
| 12,500.0 | 90.00 | 341.00 | 7,882.8 | 4,019.0 | -2,629.6 | 4,783.2 | 0.00 | 0.00 | 0.00 | |
| 12,600.0 | 90.00 | 341.00 | 7,882.8 | 4,113.5 | -2,662.2 | 4,882.0 | 0.00 | 0.00 | 0.00 | |
| 12,700.0 | 90.00 | 341.00 | 7,882.8 | 4,208.1 | -2,694.7 | 4,980.7 | 0.00 | 0.00 | 0.00 | |
| 12,800.0 | 90.00 | 341.00 | 7,882.8 | 4,302.6 | -2,727.3 | 5,079.5 | 0.00 | 0.00 | 0.00 | |
| 12,900.0 | 90.00 | 341.00 | 7,882.8 | 4,397.2 | -2,759.8 | 5,178.3 | 0.00 | 0.00 | 0.00 | |
| 13,000.0 | 90.00 | 341.00 | 7,882.8 | 4,491.7 | -2,792.4 | 5,277.0 | 0.00 | 0.00 | 0.00 | |
| 13,100.0 | 90.00 | 341.00 | 7,882.8 | 4,586.3 | -2,824.9 | 5,375.8 | 0.00 | 0.00 | 0.00 | |
| 13,200.0 | 90.00 | 341.00 | 7,882.8 | 4,680.9 | -2,857.5 | 5,474.6 | 0.00 | 0.00 | 0.00 | |
| 13,300.0 | 90.00 | 341.00 | 7,882.8 | 4,775.4 | -2,890.1 | 5,573.3 | 0.00 | 0.00 | 0.00 | |
| 13,400.0 | 90.00 | 341.00 | 7,882.8 | 4,870.0 | -2,922.6 | 5,672.1 | 0.00 | 0.00 | 0.00 | |
| 13,500.0 | 90.00 | 341.00 | 7,882.8 | 4,964.5 | -2,955.2 | 5,770.9 | 0.00 | 0.00 | 0.00 | |
| 13,600.0 | 90.00 | 341.00 | 7,882.8 | 5,059.1 | -2,987.7 | 5,869.6 | 0.00 | 0.00 | 0.00 | |
| 13,700.0 | 90.00 | 341.00 | 7,882.8 | 5,153.6 | -3,020.3 | 5,968.4 | 0.00 | 0.00 | 0.00 | |
| 13,800.0 | 90.00 | 341.00 | 7,882.8 | 5,248.2 | -3,052.8 | 6,067.1 | 0.00 | 0.00 | 0.00 | |
| 13,900.0 | 90.00 | 341.00 | 7,882.8 | 5,342.7 | -3,085.4 | 6,165.9 | 0.00 | 0.00 | 0.00 | |

RECEIVED
Office of Oil and Gas
AUG 20 2018

33-05903



Well Planning Report



| | | | |
|------------------|---------------------------------------|-------------------------------------|-----------------------|
| Database: | EDM 5000.1 Single User Db | Local Co-ordinate Reference: | Well Pritt South #211 |
| Company: | Arsenal Resources | TVD Reference: | WELL @ 1381.8usft |
| Project: | Harrison County, West Virginia NAD 83 | MD Reference: | WELL @ 1381.8usft |
| Site: | Pritt South Pad | North Reference: | Grid |
| Well: | Pritt South #211 | Survey Calculation Method: | Minimum Curvature |
| Wellbore: | Wellbore #1 | | |
| Design: | Design #4 | | |

| Planned Survey | | | | | | | | | | |
|-----------------------|-----------------|-------------|-----------------------|--------------|--------------|-------------------------|-------------------------|------------------------|-----------------------|--|
| Measured Depth (usft) | Inclination (°) | Azimuth (°) | Vertical Depth (usft) | +N/-S (usft) | +E/-W (usft) | Vertical Section (usft) | Dogleg Rate (°/100usft) | Build Rate (°/100usft) | Turn Rate (°/100usft) | |
| 14,000.0 | 90.00 | 341.00 | 7,882.8 | 5,437.3 | -3,117.9 | 6,264.7 | 0.00 | 0.00 | 0.00 | |
| 14,100.0 | 90.00 | 341.00 | 7,882.8 | 5,531.8 | -3,150.5 | 6,363.4 | 0.00 | 0.00 | 0.00 | |
| 14,200.0 | 90.00 | 341.00 | 7,882.8 | 5,626.4 | -3,183.0 | 6,462.2 | 0.00 | 0.00 | 0.00 | |
| 14,300.0 | 90.00 | 341.00 | 7,882.8 | 5,720.9 | -3,215.6 | 6,561.0 | 0.00 | 0.00 | 0.00 | |
| 14,400.0 | 90.00 | 341.00 | 7,882.8 | 5,815.5 | -3,248.1 | 6,659.7 | 0.00 | 0.00 | 0.00 | |
| 14,500.0 | 90.00 | 341.00 | 7,882.8 | 5,910.1 | -3,280.7 | 6,758.5 | 0.00 | 0.00 | 0.00 | |
| 14,600.0 | 90.00 | 341.00 | 7,882.8 | 6,004.6 | -3,313.2 | 6,857.2 | 0.00 | 0.00 | 0.00 | |
| 14,700.0 | 90.00 | 341.00 | 7,882.8 | 6,099.2 | -3,345.8 | 6,956.0 | 0.00 | 0.00 | 0.00 | |
| 14,800.0 | 90.00 | 341.00 | 7,882.8 | 6,193.7 | -3,378.3 | 7,054.8 | 0.00 | 0.00 | 0.00 | |
| 14,900.0 | 90.00 | 341.00 | 7,882.8 | 6,288.3 | -3,410.9 | 7,153.5 | 0.00 | 0.00 | 0.00 | |
| 15,000.0 | 90.00 | 341.00 | 7,882.8 | 6,382.8 | -3,443.4 | 7,252.3 | 0.00 | 0.00 | 0.00 | |
| 15,100.0 | 90.00 | 341.00 | 7,882.8 | 6,477.4 | -3,476.0 | 7,351.1 | 0.00 | 0.00 | 0.00 | |
| 15,200.0 | 90.00 | 341.00 | 7,882.8 | 6,571.9 | -3,508.5 | 7,449.8 | 0.00 | 0.00 | 0.00 | |
| TD at 15265.7 | | | | | | | | | | |
| 15,265.7 | 90.00 | 341.00 | 7,882.8 | 6,634.1 | -3,529.9 | 7,514.7 | 0.00 | 0.00 | 0.00 | |

| Design Targets | | | | | | | | | |
|--|---------------|--------------|------------|--------------|--------------|-----------------|----------------|------------------|------------------|
| Target Name | Dip Angle (°) | Dip Dir. (°) | TVD (usft) | +N/-S (usft) | +E/-W (usft) | Northing (usft) | Easting (usft) | Latitude | Longitude |
| PBHL Pritt South #21' - hit/miss target - Shape - Point | 0.00 | 360.00 | 7,882.8 | 6,634.1 | -3,529.9 | 278,629.65 | 1,770,513.10 | 39° 15' 46.341 N | 80° 11' 57.332 W |
| LP Pritt South #211 D: - plan hits target center - Point | 0.00 | 0.00 | 7,882.8 | 161.2 | -1,301.5 | 272,156.78 | 1,772,741.49 | 39° 14' 42.536 N | 80° 11' 28.367 W |

| Plan Annotations | | | | | |
|-----------------------|-----------------------|-------------------|--------------|--------------------------------|--|
| Measured Depth (usft) | Vertical Depth (usft) | Local Coordinates | | Comment | |
| | | +N/-S (usft) | +E/-W (usft) | | |
| 2,500.0 | 2,500.0 | 0.0 | 0.0 | Start Build 2.00 | |
| 3,411.9 | 3,396.5 | -53.8 | -133.5 | Start 2850.1 hold at 3411.9 MD | |
| 6,261.9 | 6,103.5 | -387.0 | -960.8 | Start Drop -2.00 | |
| 7,173.8 | 7,000.0 | -440.8 | -1,094.3 | Start 246.2 hold at 7173.8 MD | |
| 7,420.0 | 7,246.2 | -440.8 | -1,094.3 | Start DLS 9.00 TFO 341.00 | |
| 8,420.0 | 7,882.8 | 161.2 | -1,301.5 | Start 6845.7 hold at 8420.0 MD | |
| 15,265.7 | 7,882.8 | 6,634.1 | -3,529.9 | TD at 15265.7 | |

33-05903
M6D



SITE SAFETY PLAN

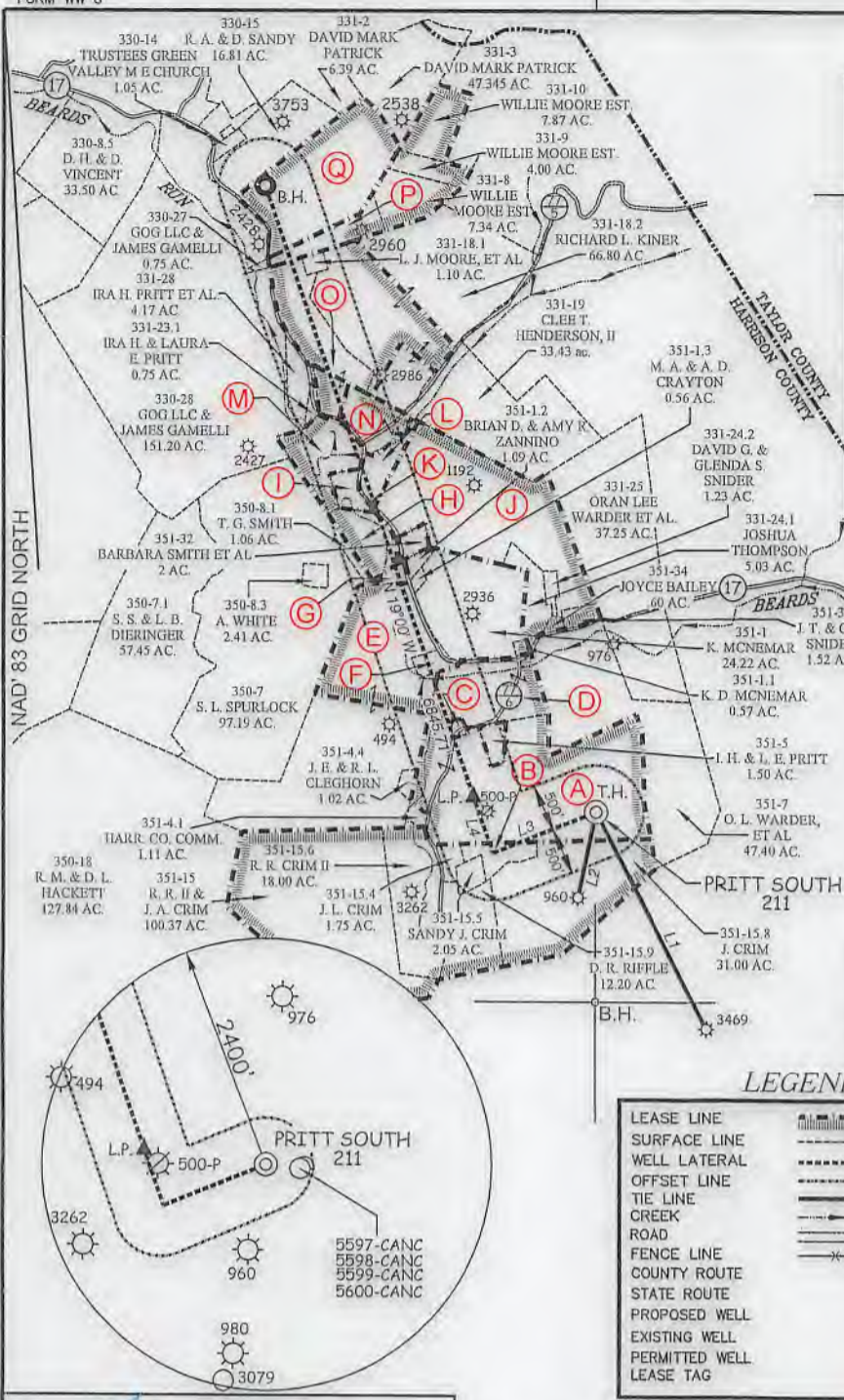
Pritt South Pad, Well #211

SDW
8/15/2018

911 Address:

3460 Green Valley Road

Bridgeport, WV 26330



**ARSENAL RESOURCES
PRITT SOUTH 211**

(S.P.C. NORTH ZONE) (UTM(M) ZONE 17 NORTH)

NAD'83 S.P.C.(FT) N. 271,995.6 E. 1,774,043.0
 NAD'83 GEO. LAT(-N) 39.244734 LONG(-W) 80.186613
 NAD'83 UTM (M) N. 4,344,250.7 E. 570,189.8

LANDING POINT

NAD'83 S.P.C.(FT) N. 272,156.8 E. 1,772,741.5
 NAD'83 GEO. LAT(-N) 39.245149 LONG(-W) 80.191213
 NAD'83 UTM (M) N. 4,344,293.2 E. 569,792.4

BOTTOM HOLE

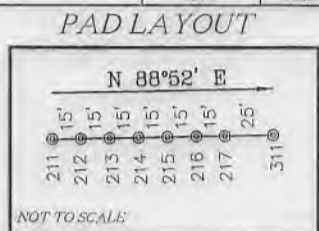
NAD'83 S.P.C.(FT) N. 278,629.6 E. 1,770,513.1
 NAD'83 GEO. LAT(-N) 39.262872 LONG(-W) 80.199259
 NAD'83 UTM (M) N. 4,346,254.0 E. 569,080.7

T.H. LONGITUDE 80°10'00"
B.H. LONGITUDE 80°10'00"

| TAG | SURFACE OWNER | TAX MAP / PCL | ACREAGE |
|-----|--|----------------|---------|
| A | IRA H. & LAURA E. PRITT | 351-1 | 69.09± |
| B | JULIA L. CRIM | 351-15.3 | 4.19± |
| C | IRA H. & LAURA E. PRITT | 351-3 | 0.72± |
| D | IRA H. & LAURA E. PRITT | 351-2 | 18.749± |
| E | CAROLYN S. CLEGHORN | 351-4.2 | 85.80± |
| F | ROBERT J. CLEGHORN & DONNA J. STEGEMANN | 251-4.5 | 1.78± |
| G | SCOTT CHERNOWETH | 351-4.3 | 1.29± |
| H | WILLIAM C. III & MICHELLE D. SPURLOCK | 331-23.3 | 7.77± |
| I | WILLIAM C. III & MICHELLE D. SPURLOCK | 331-23.5 | 2.79± |
| J | JOHN T. & CYNTHIA R. SNIDER | 331-24 | 48.14± |
| K | WEST VIRGINIA DEPARTMENT OF TRANSPORTATION, DIVISION OF HIGHWAYS | ORAL LAKE ROAD | N/A |
| L | EDWARD L. & ERICA L. ABRAHAM | 331-23.4 | 4.61± |
| M | SARAH L. SPURLOCK | 331-23.6 | 10.88± |
| N | GARY A. & PATTY L. WELLS | 331-23 | 7.02± |
| O | OWEN B. MARK | 331-18 | 16.62± |
| P | WILLIE & GOLDIE MOORE ESTATE | 331-13 | 4.69± |
| Q | D. M. PATRICK | 331-7 | 31.13± |

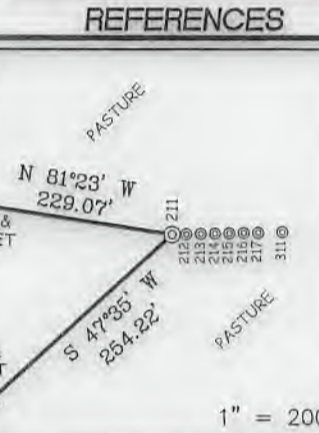
**PRITT SOUTH 211
WELL TIES**

| LINE | BEARING | DISTANCE |
|------|------------|----------|
| L1 | S 26°58' E | 2875.59' |
| L2 | S 12°00' W | 928.32' |
| L3 | S 68°04' W | 1179.73' |
| L4 | N 19°00' W | 636.5' |



LEGEND

- LEASE LINE
- SURFACE LINE
- WELL LATERAL
- OFFSET LINE
- TIE LINE
- CREEK
- ROAD
- FENCE LINE
- COUNTY ROUTE
- STATE ROUTE
- PROPOSED WELL
- EXISTING WELL
- PERMITTED WELL
- LEASE TAG



NOTES ON SURVEY

1. NO WATER WELLS WERE FOUND WITHIN 250' OF PROPOSED GAS WELL. NO AGRICULTURAL BUILDINGS > 2500 SQ. FT. OR DWELLINGS WERE FOUND WITHIN 625' OF THE CENTER OF PROPOSED WELL PAD.



(+) DENOTES LOCATION OF WELL ON UNITED STATES TOPOGRAPHIC MAPS.
 DATE AUGUST 24, 20 17
 REVISED AUGUST 15, 2018
 OPERATORS WELL NO. PRITT SOUTH 211
 API WELL NO. 47 - 033 - 05903
 STATE COUNTY PERMIT

SLS
Land & Energy Development
 Solutions from the ground up.
 P.O. Box 150 • 12 Vanhorn Drive • Glenville, WV 26351 • (304) 462-5634
 www.slsurveys.com

I THE UNDERSIGNED, HEREBY CERTIFY THAT THIS PLAT IS CORRECT TO THE BEST OF MY KNOWLEDGE AND BELIEF AND SHOWS ALL THE INFORMATION REQUIRED BY LAW AND THE REGULATIONS ISSUED AND PRESCRIBED BY THE DIVISION OF ENVIRONMENTAL PROTECTION.

P.S. 677 *Gregory A. Smith*

MINIMUM DEGREE OF ACCURACY 1 / 2500 FILE NO. 8383P211R5.dwg
 HORIZONTAL & VERTICAL CONTROL DETERMINED BY DGPS (SURVEY GRADE TIE TO CORS NETWORK) SCALE 1" = 2000'

STATE OF WEST VIRGINIA
 DIVISION OF ENVIRONMENTAL PROTECTION
 OFFICE OF OIL AND GAS

WELL TYPE: OIL GAS LIQUID INJECTION WASTE DISPOSAL IF "GAS" PRODUCTION STORAGE DEEP SHALLOW

LOCATION: ELEVATION EXISTING: 1,352.00' / PROPOSED: 1,354.80' WATERSHED BEARDS RUN & PIGTAIL RUN
 DISTRICT SIMPSON COUNTY HARRISON QUADRANGLE BROWNTON 7.5'
 SURFACE OWNER IRA & LAURA PRITT ACREAGE 69.096±
 ROYALTY OWNER IRA & LAURA PRITT ET AL ACREAGE 92.06±
 PROPOSED WORK: LEASE NO. 00006622
 DRILL CONVERT DRILL DEEPER REDRILL FRACTURE OR STIMULATE PLUG OFF OLD FORMATION PERFORATE NEW FORMATION PLUG AND ABANDON CLEAN OUT AND REPLUG OTHER
 PHYSICAL CHANGE IN WELL (SPECIFY) TARGET FORMATION MARCELLUS
 ESTIMATED DEPTH 15,266' TMD / 7,883' TVD

WELL OPERATOR ARSENAL RESOURCES DESIGNATED AGENT WILLIAM VEIGEL
 ADDRESS 6031 WALLACE RD. EXT. SUITE 300 WEXFORD, PA 15090 ADDRESS 65 PROFESSIONAL PLACE BRIDGEPORT, WV 26330

COUNTY NAME PERMIT

WW-6A1
(5/13)

Operator's Well No. Pritt South 211

**INFORMATION SUPPLIED UNDER WEST VIRGINIA CODE
Chapter 22, Article 6A, Section 5(a)(5)
IN LIEU OF FILING LEASE(S) AND OTHER CONTINUING CONTRACT(S)**

Under the oath required to make the verification on page 1 of this Notice and Application, I depose and say that I am the person who signed the Notice and Application for the Applicant, and that –

- (1) the tract of land is the same tract described in this Application, partly or wholly depicted in the accompanying plat, and described in the Construction and Reclamation Plan;
- (2) the parties and recordation data (if recorded) for lease(s) or other continuing contract(s) by which the Applicant claims the right to extract, produce or market the oil or gas are as follows:

| Lease Name or Number | Grantor, Lessor, etc. | Grantee, Lessee, etc. | Royalty | Book/Page |
|----------------------|-----------------------|-----------------------|---------|-----------|
|----------------------|-----------------------|-----------------------|---------|-----------|

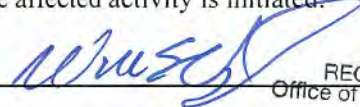
* See Attached

**Acknowledgement of Possible Permitting/Approval
In Addition to the Office of Oil and Gas**

The permit applicant for the proposed well work addressed in this application hereby acknowledges the possibility of the need for permits and/or approvals from local, state, or federal entities in addition to the DEP, Office of Oil and Gas, including but not limited to the following:

- WV Division of Water and Waste Management
- WV Division of Natural Resources WV Division of Highways
- U.S. Army Corps of Engineers
- U.S. Fish and Wildlife Service
- County Floodplain Coordinator

The applicant further acknowledges that any Office of Oil and Gas permit in no way overrides, replaces, or nullifies the need for other permits/approvals that may be necessary and further affirms that all needed permits/approvals should be acquired from the appropriate authority before the affected activity is initiated.

Well Operator: Arsenal Resources 
 By: William Veigel
 Its: Designated Agent

RECEIVED
Office of Oil and Gas

AUG 20 2018

Attachment to WW-6A1, Pritt S 211

| Letter Designation/Number Designation on Plat | Grantor, Lessor, Assignor, etc. | Grantee, Lessee, Assignee, etc. | Royalty | Book/Page | Acres |
|---|---|---|---------|---------------------------|-------|
| A, D (00006622) ✓ | Ira Pritt and Laura E. Pritt, husband and wife | Carrizo (Marcellus), LLC | 15.00% | 1448/804 | 2.06 |
| | Carrizo (Marcellus), LLC | ACP II Marcellus, LLC and Carrizo (Marcellus) WV, LLC | | 1460/1083 | |
| | Carrizo (Marcellus) WV, LLC and ACP II Marcellus, LLC | PDC Mountaineer, LLC | | 1518/395 | |
| | PDC Mountaineer, LLC | River Ridge Energy, LLC | | 59/1263 | |
| B (00003826) ✓ | Stella P. Crim, widow | Union Carbide Corporation | 12.50% | 853/83 | 151 |
| | Union Carbide Corporation | Creslenn Oil Company | | 897/286 | |
| | Creslenn Oil Company | Delta Producing Corporation | | 925/522 | |
| | Delta Producing Corporation | Petroleum Corporation of America | | 967/575 (Also 977/168) | |
| | Petroleum Corporation of America | Petroleum Development Corporation | | 977/153 | |
| | Petroleum Development Corporation | PDC Mountaineer, LLC | | 1440/364 | |
| | PDC Mountaineer, LLC | River Ridge Energy, LLC | | 59/1263 | |
| C (00007905) ✓ | Ira Pritt and Laura E. Pritt, husband and wife | Mar Key, LLC | 12.50% | 1599/90 | 2.906 |
| E, F (00004357) ✓ | Glen Smith and Helen Nadine Smith, his wife | Union Carbide Corporation | 12.50% | 853/131 | 60 |
| | Union Carbide Corporation | Creslenn Oil Company | | 897/286 | |
| | Creslenn Oil Company | Delta Producing Corporation | | 925/522 | |
| | Delta Producing Corporation | Petroleum Corporation of America | | 967/575 (Also 977/168) | |

RECEIVED
Office of Oil and Gas

AUG 20 2018

WV Department of
Environmental Protection

| | | | | | |
|-------------------------|--|-----------------------------------|--------|-----------|-------|
| | Petroleum Corporation of America | Petroleum Development Corporation | | 977/153 | |
| | Petroleum Development Corporation | PDC Mountaineer, LLC | | 1440/364 | |
| | PDC Mountaineer, LLC | River Ridge Energy, LLC | | 59/1263 | |
| G, H, M (00004978) / | Clair Chenoweth | PDC Mountaineer, LLC | 12.50% | 1478/469 | 20 |
| | PDC Mountaineer, LLC | River Ridge Energy, LLC | | 59/1263 | |
| I (00004982) / | James V. Brockleman, II and Andrea Brockleman, husband and wife, JTROS | PDC Mountaineer, LLC | 12.50% | 1479/1143 | 2.79 |
| | PDC Mountaineer, LLC | River Ridge Energy, LLC | | 59/1263 | |
| J (00004031) / | Frances M. Morris, single and Lummie B. Snyder | Petroleum Development Corporation | 12.50% | 1058/166 | 58 |
| | Petroleum Development Corporation | PDC Mountaineer, LLC | | 1440/364 | |
| | PDC Mountaineer, LLC | River Ridge Energy, LLC | | 59/1263 | |
| K (00007183) / | West Virginia Department of Transportation, Division of Highways | Mar Key, LLC | 20.00% | 1568/1225 | 12.41 |
| L (00004984) / | Edward L. Abraham and Erica L. Abraham, husband and wife, JTROS | PDC Mountaineer, LLC | 12.50% | 1480/124 | 4.61 |
| | PDC Mountaineer, LLC | River Ridge Energy, LLC | | 59/1263 | |
| N (00004981) / | Gary A. Wells and Patty L. Wells, husband and wife, JTROS | PDC Mountaineer, LLC | 12.50% | 1479/1146 | 7.02 |
| | PDC Mountaineer, LLC | River Ridge Energy, LLC | | 59/1263 | |

RECEIVED
Office of Oil and Gas
AUG 20 2018
WV Department of
Environmental Protection

| | | | | | |
|-------------------|--|-----------------------------------|--------|-----------|-------|
| O (00007845) ✓ | Janielle Elizabeth Williams, a single woman | Mar Key, LLC | 12.50% | 1599/318 | |
| O (00007842) ✓ | Mark Rodney Nuzum, a married man dealing in his sole and separate property | Mar Key, LLC | 12.50% | 1597/404 | |
| O (00007846) ✓ | Terry Lewis Nuzum, a single man | Mar Key, LLC | 12.50% | 1598/1179 | 37.78 |
| O (00004344) ✓ | Bernard F. Joseph and Frenna J. Joseph, his wife | Petroleum Development Corporation | 12.50% | 1134/87 | 41.14 |
| | Petroleum Development Corporation | PDC Mountaineer, LLC | | 1440/364 | |
| | PDC Mountaineer, LLC | River Ridge Energy, LLC | | 59/1263 | |
| O (00004345) ✓ | Robert M. Geer | Petroleum Development Corporation | 12.50% | 1140/701 | 41 |
| | Petroleum Development Corporation | PDC Mountaineer, LLC | | 1440/364 | |
| | PDC Mountaineer, LLC | River Ridge Energy, LLC | | 59/1263 | |
| O (00004346) ✓ | Thelma L. Randolph and Azel L. Randolph, her husband | Petroleum Development Corporation | 12.50% | 1075/811 | 41 |
| | Petroleum Development Corporation | PDC Mountaineer, LLC | | 1440/364 | |
| | PDC Mountaineer, LLC | River Ridge Energy, LLC | | 59/1263 | |
| P (00003783) ✓ | Goldie Moore, widow | Petroleum Development Corporation | 12.50% | 1085/439 | 30 |
| | Petroleum Development Corporation | PDC Mountaineer, LLC | | 1440/364 | |
| | PDC Mountaineer, LLC | River Ridge Energy, LLC | | 59/1263 | |
| Q (00008144) ✓ | Jay D. Harmer, a married man dealing in his own right | Mar Key, LLC | 12.50% | 1607/409 | 32 |

RECEIVED
 Office of Oil and Gas
 30 AUG 2018
 WV Department of
 Environmental Protection

RECEIVED
Office of Oil and Gas
Aug 20 2018
12:12 PM
U.S. Department of
Environmental Protection

| | | | | | |
|-------------------------|---|---------------------|---------------|-------------------|---------------|
| <p>Q (00008381)</p> | <p>JPMorgan Chase Bank, N.A., as Trustee Under a Trust Agreement Made by The Union National Bank of Clarksburg, a Corporation, and S.A. Smith and C. Burke Morris</p> | <p>Mar Key, LLC</p> | <p>20.00%</p> | <p>Unrecorded</p> | <p>32.125</p> |
| <p>Q (00008380)</p> | <p>JPMorgan Chase Bank, NA, Trustee for John W. Kerns Heirs Trust</p> | <p>Mar Key, LLC</p> | <p>20.00%</p> | <p>Unrecorded</p> | <p>32.125</p> |

West Virginia Secretary of State — Online Data Services

Business and Licensing

Online Data Services Help

Business Organization Detail

NOTICE: The West Virginia Secretary of State's Office makes every reasonable effort to ensure the accuracy of information. However, we make no representation or warranty as to the correctness or completeness of the information. If information is missing from this page, it is not in the The West Virginia Secretary of State's database.

MAR KEY LLC

| Organization Information | | | | | | | | |
|---------------------------------|----------------|------------------|-------------|----------|--------|----------|------------------|--------------------|
| Org Type | Effective Date | Established Date | Filing Date | Charter | Class | Sec Type | Termination Date | Termination Reason |
| LLC Limited Liability Company | 7/11/2011 | | 7/11/2011 | Domestic | Profit | | | |

| Organization Information | | | |
|---------------------------------|--|-----------------------|----------------------|
| Business Purpose | 2111 - Mining, Quarrying, Oil & Gas Extraction - Oil and Gas Extraction - Crude Oil and Natural Gas Extraction | | Capital Stock |
| Charter County | | Control Number | 99Q1F |
| Charter State | WV | Excess Acres | |
| At Will Term | A | Member Managed | MBR |
| At Will Term Years | | Par Value | |

RECEIVED
Office of Oil and Gas

AUG 20 2018

WV Department of
Environmental Protection

| |
|--------------------------|
| Authorized Shares |
| |

| Addresses | |
|----------------------------------|--|
| Type | Address |
| Designated Office Address | 65 PROFESSIONAL PLACE SUITE 200 BRIDGEPORT, WV, 26330 |
| Mailing Address | 6031 WALLACE ROAD EXTENSION SUITE 300 WEXFORD, PA, 15090 USA |
| Notice of Process Address | CORPORATION SERVICE COMPANY 209 WEST WASHINGTON STREET CHARLESTON, WV, 25302 |
| Principal Office Address | 6031 WALLACE ROAD EXTENSION SUITE 300 WEXFORD, PA, 15090 USA |
| Type | Address |

| Officers | |
|------------------|--|
| Type | Name/Address |
| Member | ARSENAL RESOURCES ENERGY LLC 6031 WALLACE ROAD EXTENSION SUITE 300 WEXFORD, PA, 15090 |
| Organizer | PAUL M HERZING 560 EPSILON DR. PITTSBURGH, PA, 15238 USA |
| Type | Name/Address |

RECEIVED
Office of Oil and Gas

AUG 20 2018

WV Department of
Environmental Protection

| |
|-----------------------|
| Annual Reports |
| Date filed |
| |

| |
|------------|
| 3/30/2017 |
| 6/20/2016 |
| 6/30/2015 |
| 4/28/2014 |
| 6/28/2013 |
| 5/8/2012 |
| Date filed |

For more information, please contact the Secretary of State's Office at 304-558-8000.

Tuesday, November 28, 2017 — 9:44 AM

© 2017 State of West Virginia

RECEIVED
Office of Oil and Gas
AUG 20 2018
WV Department of
Environmental Protection

Agreement to Drill, Complete and Operate Oil & Gas Wells

This Agreement to Drill, Complete and Operate Oil & Gas Wells (this "Agreement"), by and among Mountaineer Keystone LLC, a West Virginia limited liability company ("Mountaineer Keystone"), PDC Mountaineer, LLC, a Delaware limited liability company ("PDC"), and PDC Mountaineer Holdings, LLC, a Delaware limited liability company ("PDC Holdings"), is effective as of October 15, 2014. (the "Effective Date") and sets forth the terms pursuant to which Mountaineer Keystone will drill, complete and operate the Wells (as defined below) on behalf of PDC and PDC Holdings. Mountaineer Keystone, PDC, and PDC Holdings are each a "Party" and are collectively the "Parties". In consideration of the foregoing and the respective agreements hereinafter set forth and the mutual benefits to be derived therefrom, the Parties, intending to be legally bound, hereby agree as follows:

1. **Term:** This Agreement is effective from the Effective Date until terminated by Mountaineer Keystone on the one hand or PDC and PDC Holdings on the other hand with 30 days' written notice to the other Party or Parties, as applicable (the "Term").
2. **Authorization to Operate:** PDC and PDC Holdings authorize Mountaineer Keystone to undertake and perform, on PDC and PDC Holdings behalf, all operations, including without limitation permit applications, well pad preparation, drilling and completing wells, and marketing gas, oil and other hydrocarbons therefrom with respect to all oil and gas wells to be drilled on oil and gas leasehold acreage held by PDC or PDC Holdings. PDC, PDC Holdings and Mountaineer Keystone are affiliates with a common parent. Mountaineer Keystone was formed to operate oil and gas leasehold acreage held by PDC, PDC Holdings and certain other affiliates. Mountaineer Keystone agrees that it shall, in a good and workmanlike manner and in accordance with industry standards as they prevail in the area, drill, complete and operate oil and gas wells on leasehold acreage owned by PDC or PDC Holdings from time to time as directed by PDC or PDC Holdings (collectively, the "Wells").
3. **No Third Party Beneficiary:** This Agreement is for the benefit of the Parties and is not for the benefit of any third party.
4. **Counterparts:** This Agreement may be simultaneously executed in several counterparts and via facsimile or similar electronic transmittal, each of which shall be deemed to be an original and taken together shall constitute one and the same instrument.

[Signature Page Follows]

RECEIVED
Office of Oil and Gas

AUG 20 2018


WV Department of
Environmental Protection

IN WITNESS WHEREOF, Mountaineer Keystone, PDC, and PDC Holdings have caused their duly authorized representatives to execute this Agreement as of the Effective Date.


MOUNTAINEER KEYSTONE LLC

By: 
Name: Robert Kessel
Title: CEO

PDC MOUNTAINEER, LLC

By: 
Name: Robert Kessel
Title: CEO

PDC MOUNTAINEER HOLDINGS, LLC

By: 
Name: Robert Kessel
Title: CEO

RECEIVED
Office of Oil and Gas
AUG 20 2018
WV Department of
Environmental Protection

Agreement to Drill, Complete and Operate Oil & Gas Wells

This Agreement to Drill, Complete and Operate Oil & Gas Wells (this "Agreement"), by and among Arsenal Resources LLC, a West Virginia limited liability company ("Arsenal"), River Ridge Energy, LLC, a Delaware limited liability company ("River Ridge"), and River Ridge Energy, Holdings, LLC, a Delaware limited liability company ("River Ridge Holdings"), is effective as of March 1, 2017. (the "Effective Date") and sets forth the terms pursuant to which Arsenal will drill, complete and operate the Wells (as defined below) on behalf of River Ridge and River Ridge Holdings. Arsenal, River Ridge, and River Ridge Holdings are each a "Party" and are collectively the "Parties". In consideration of the foregoing and the respective agreements hereinafter set forth and the mutual benefits to be derived therefrom, the Parties, intending to be legally bound, hereby agree as follows:

1. **Term:** This Agreement is effective from the Effective Date until terminated by Arsenal on the one hand or River Ridge and River Ridge Holdings on the other hand with 30 days' written notice to the other Party or Parties, as applicable (the "Term").
2. **Authorization to Operate:** River Ridge and River Holdings authorize Arsenal to undertake and perform, on River Ridge and River Ridge Holdings behalf, all operations, including without limitation permit applications, well pad preparation, drilling and completing wells, and marketing gas, oil and other hydrocarbons therefrom with respect to all oil and gas wells to be drilled on oil and gas leasehold acreage held by River Ridge or River Ridge Holdings. River Ridge, River Ridge Holdings and Arsenal are affiliates with a common parent. Arsenal was formed to operate oil and gas leasehold acreage held by River Ridge, River Ridge Holdings and certain other affiliates. Arsenal agrees that it shall, in a good and workmanlike manner and in accordance with industry standards as they prevail in the area, drill, complete and operate oil and gas wells on leasehold acreage owned by River Ridge or River Ridge Holdings from time to time as directed by River Ridge or River Ridge Holdings (collectively, the "Wells").
3. **No Third Party Beneficiary:** This Agreement is for the benefit of the Parties and is not for the benefit of any third party.
4. **Counterparts:** This Agreement may be simultaneously executed in several counterparts and via facsimile or similar electronic transmittal, each of which shall be deemed to be an original and taken together shall constitute one and the same instrument.

[Signature Page Follows]

RECEIVED
Office of Oil and Gas

AUG 20 2018

WV Department of
Environmental Protection

IN WITNESS WHEREOF, Arsenal, River Ridge, and River Ridge Holdings have caused their duly authorized representatives to execute this Agreement as of the Effective Date.

ARSENAL RESOURCES LLC

By: Joel E. Symonds
Name: Joel E. Symonds
Title: Vice President - Land

RIVER RIDGE ENERGY, LLC

By: Joel E. Symonds
Name: Joel E. Symonds
Title: Vice President - Land

RIVER RIDGE HOLDINGS, LLC

By: Joel E. Symonds
Name: Joel E. Symonds
Title: Vice President - Land

RECEIVED
Office of Oil and Gas

AUG 20 2018

WV Department of
Environmental Protection



People Powered. Asset Strong.

March 22, 2018

Mr. James Martin, Chief of Oil and Gas
West Virginia Department of Environmental Protection
601 57th Street, SE
Charleston, WV 25304

RE: Ownership of Roadways; Pritt South Pad

Dear Mr. Martin:

In preparation of filing a permit application for the above referenced well, the Title Department of Arsenal Resources has conducted a thorough title examination in order to determine the ownership of the oil and gas underlying all roadways crossed by the proposed wells. The findings of the title examination show that some of the roadways crossed by the proposed wells are owned in fee by the West Virginia Department of Transportation, Division of Highways and that some are only right of ways. If owned in fee by the West Virginia Department of Transportation, Division of Highways, a lease covering its interest in the roadway or roadways has been properly obtained and provided in the application materials. If a right of way only, the oil and gas underlying such roadway or roadways is owned by the adjoining landowners and is also covered by the leaseholds provided in the application materials.

If you have any questions, concerns or need further information, please do not hesitate to contact me at the address listed below.

Sincerely,

A handwritten signature in blue ink that reads 'Coty Brandon'.

Coty Brandon
Title Manager

RECEIVED
Office of Oil and Gas

AUG 20 2018

WV Department of
Environmental Protection



August 17, 2018

WVDEP
Office of Oil and Gas
ATTN: Laura Adkins
601 57th Street SE
Charleston, WV 25304

RE: Pritt South Pad – Pritt South 211, API# 47-033-05903 – Modification to spacing changes and extending lateral

Dear Laura:

Enclosed please find the modification for the Pritt South 211, (API# 47-033-05903). This permit was on operator hold. We would like to remove the hold and replace it with this application. This permit is being modified due to adjusting the well bore spacing and moving it to 240' to the east. The well head locations remained the same. This well was originally permitted to 6,595.20'. We have obtained additional leasing for this site during this modification and request to extend the lateral 250.51' for a total of 6,845.71'. Included are the following:

- Plat
- WW-6B, Well Work Permit Application/Casing
- Well Bore Schematic
- WW-6A1, Lease Information
- Roadway Letter
- Site Safety Plan
- AOR

RECEIVED
Office of Oil and Gas

AUG 20 2018

WV Department of
Environmental Protection

Should you have any questions or need any additional information, please feel free to contact me by phone or email. Thank you!

Sincerely,

Kelly Davis
Permitting Specialist
1-304-517-8743 mobile
1-724-940-1218 office
kdavis@arsenalresources.com