

ARSENAL RESOURCES GAMELLI HSOG 204

(S.P.C. NORTH ZONE) (UTM(M) ZONE 17 NORTH)

NAD'83 S.P.C.(FT) N. 278,099.8 E. 1,769,102.0

NAD'83 GEO. LAT-(N) 39.281387 LONG-(W) 80.204228

NAD'83 UTM (M) N. 4,346,085.4 E. 568,653.5

LANDING POINT

NAD'83 S.P.C.(FT) N. 277,673.4 E. 1,769,102.0

NAD'83 GEO. LAT-(N) 39.280234 LONG-(W) 80.201408

NAD'83 UTM (M) N. 4,345,959.5 E. 568,897.9

BOTTOM HOLE

NAD'83 S.P.C.(FT) N. 263,605.5 E. 1,774,740.4

NAD'83 GEO. LAT-(N) 39.221713 LONG-(W) 80.183925

NAD'83 UTM (M) N. 4,341,698.1 E. 570,444.7

TAG	SURFACE OWNER	TAX MAP PARCEL	ACREAGE
A	JAMES T. GAMELLI ET AL.	330-24	151.20±
B	SARAH L. SPURLOCK	350-7	97.19±
C	RAY ANDREW WHITE	350-8.3	2.41±
D	CAROLYN S. CLEGHORN	351-4.2	95.80±
E	RONALD RAY CRIM, II	351-13.6	18.00±
F	JOSHUA A. & AMANDA D. BROWN	351-15.10	2.37±
G	GERALD W. BURNER ET AL.	351-20	40.25±
H	ROGER P., II & MELISSA L. SUTER	351-26.1	13.18±
I	ROGER P., II & MELISSA L. SUTER	351-27.1	19.87±
J	GERALD W. BURNER ET AL.	351-27	5.22±
K	GERALD W. BURNER ET AL.	351-28	6.65±
L	ROGER P., II & MELISSA L. SUTER	351-28.1	18.46±
M	ROGER P., II & MELISSA L. SUTER	351-29	51.00±
N	ROGER P., II & MELISSA L. SUTER	371-4.1	27.66±
O	ECOSYSTEM INVESTMENT PARTNERS III, LLC	371-3	95.98±
P	ECOSYSTEM INVESTMENT PARTNERS III, LLC	371-9	105.48±

GAMELLI HSOG 204 WELL TIES

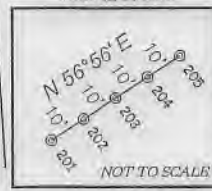
LINE	BEARING	DISTANCE
L1	N 73°11' E	613.55'
L2	S 19°00' E	639.02'
L3	S 28°44' E	2551.17'
L4	S 17°47' E	7053.18'

REFERENCES



NOTES ON SURVEY

1. NO WATER WELLS WERE FOUND WITHIN 250' OF PROPOSED GAS WELL. NO AGRICULTURAL BUILDINGS ≥ 2500 SQ. FT. OR DWELLINGS WERE FOUND WITHIN 625' OF THE CENTER OF PROPOSED WELL PAD.



LEGEND

- LEASE LINE
- INTERIOR LEASE LINE
- SURFACE LEASE LINE
- WELL LATERAL
- OFFSET LINE
- TIE LINE
- CREEK
- ROAD
- COUNTY ROUTE
- STATE ROUTE
- PROPOSED WELL
- EXISTING WELL
- PERMITTED WELL
- LEASE TAG

NAD'83 GRID NORTH

T.H. LONGITUDE 80°10'00" B.H. LONGITUDE 80°10'00"

T.H. LATITUDE 39°17'30" B.H. LATITUDE 39°15'00"



SLS
Land & Energy Development
Solutions from the ground up.
P.O. Box 150 • 12 Vanhook Drive • Glenville, WV 26031 • (304) 482-5834
www.slsurvey.com

I THE UNDERSIGNED, HEREBY CERTIFY THAT THIS PLAT IS CORRECT TO THE BEST OF MY KNOWLEDGE AND BELIEF AND SHOWS ALL THE INFORMATION REQUIRED BY LAW AND THE REGULATIONS ISSUED AND PRESCRIBED BY THE DIVISION OF ENVIRONMENTAL PROTECTION.

P.S. 849 *C. Victor Moyers*



(+) DENOTES LOCATION OF WELL ON UNITED STATES TOPOGRAPHIC MAPS.
DATE OCTOBER 26, 20 18
REVISED _____
OPERATORS WELL NO. GAMELLI HSOG 204
API WELL NO. 47 - 33 - 05934
STATE 33 COUNTY 05934 PERMIT _____

MINIMUM DEGREE OF ACCURACY 1 / 2500 FILE NO. 8597P204.dwg
HORIZONTAL & VERTICAL CONTROL DETERMINED BY DGPS (SURVEY GRADE TIE TO CORS NETWORK) SCALE 1" = 2000'

STATE OF WEST VIRGINIA
DIVISION OF ENVIRONMENTAL PROTECTION
OFFICE OF OIL AND GAS

WELL TYPE: OIL GAS LIQUID INJECTION WASTE DISPOSAL IF "GAS" PRODUCTION STORAGE DEEP SHALLOW

LOCATION: ELEVATION EXISTING: 1,130.20' / PROPOSED: 1,140.50' WATERSHED BEARDS RUN
DISTRICT SIMPSON COUNTY HARRISON QUADRANGLE ROSEMONT 7.5'

SURFACE OWNER JAMES T. GAMELLI ET AL. ACREAGE 151.20±
ROYALTY OWNER JAMES T. GAMELLI ET AL. ACREAGE 151.20±
LEASE NO. _____

PROPOSED WORK: DRILL CONVERT DRILL DEEPER REDRILL FRACTURE OR STIMULATE PLUG OFF OLD FORMATION PERFORATE NEW FORMATION PLUG AND ABANDON CLEAN OUT AND REPLUG OTHER _____

PHYSICAL CHANGE IN WELL (SPECIFY) _____ TARGET FORMATION MARCELLUS
ESTIMATED DEPTH 22,632.3' TMD / 7,317' TVD

WELL OPERATOR ARSENAL RESOURCES DESIGNATED AGENT WILLIAM VEIGEL
ADDRESS 6031 WALLACE RD. EXT. SUITE 300 ADDRESS 65 PROFESSIONAL PLACE
WEXFORD, PA 15090 BRIDGEPORT, WV 26330

COUNTY NAME PERMIT

03/01/2019

GAMELLI PAD POSSIBLE WATER PURVEYORS

ACCESS ROAD ENTRANCE
UTM(NAD'83)(METERS)
N. 4,346,283.1
E. 868,913.9
LATITUDE (NAD'83) 39°15'47.3"
LONGITUDE (NAD'83) 80°12'04.3"

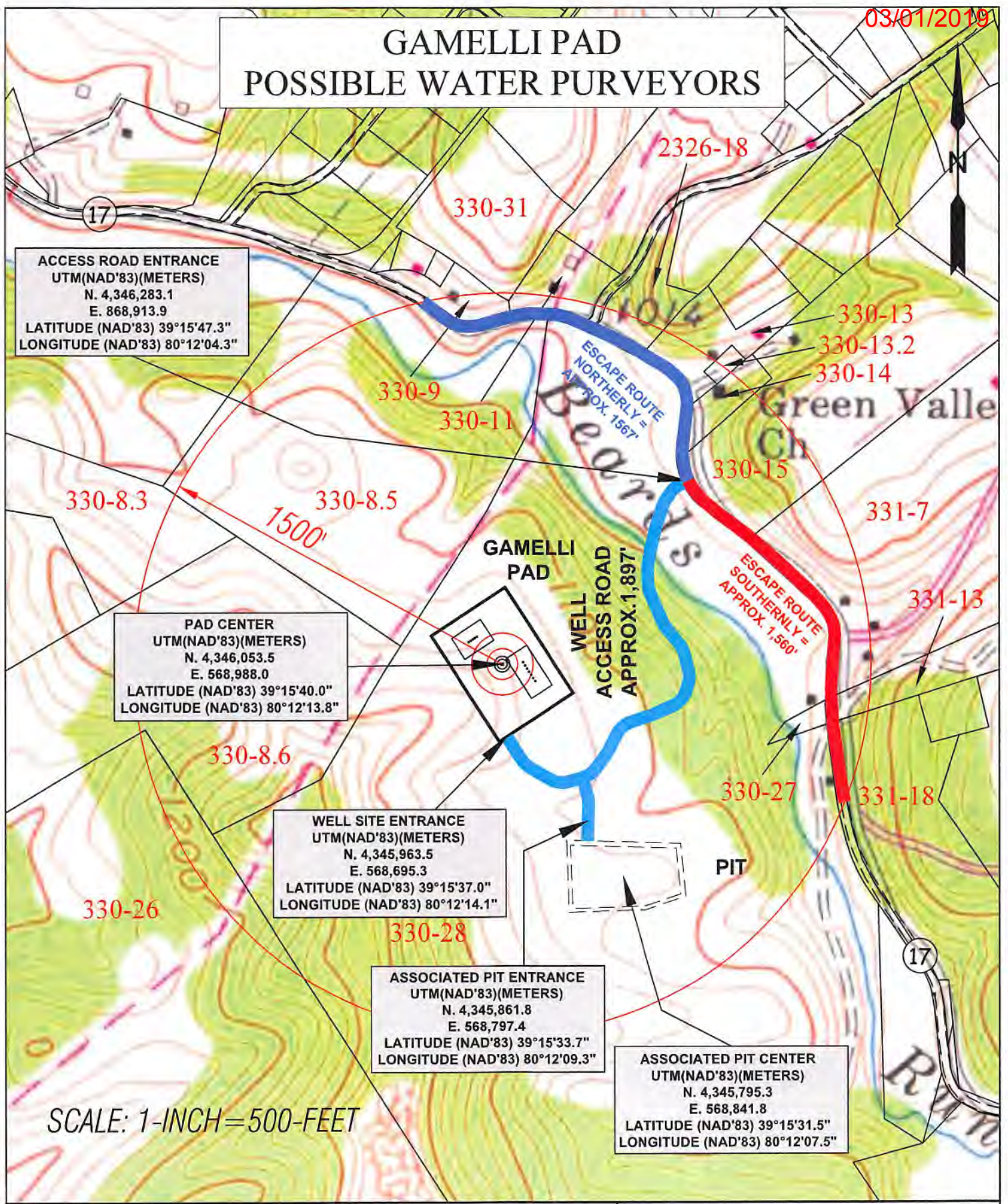
PAD CENTER
UTM(NAD'83)(METERS)
N. 4,346,053.5
E. 568,988.0
LATITUDE (NAD'83) 39°15'40.0"
LONGITUDE (NAD'83) 80°12'13.8"


WELL SITE ENTRANCE
UTM(NAD'83)(METERS)
N. 4,345,963.5
E. 568,695.3
LATITUDE (NAD'83) 39°15'37.0"
LONGITUDE (NAD'83) 80°12'14.1"

ASSOCIATED PIT ENTRANCE
UTM(NAD'83)(METERS)
N. 4,345,861.8
E. 568,797.4
LATITUDE (NAD'83) 39°15'33.7"
LONGITUDE (NAD'83) 80°12'09.3"

ASSOCIATED PIT CENTER
UTM(NAD'83)(METERS)
N. 4,345,795.3
E. 568,841.8
LATITUDE (NAD'83) 39°15'31.5"
LONGITUDE (NAD'83) 80°12'07.5"

SCALE: 1-INCH=500-FEET



	TOPO SECTIONS OF: ROSEMONT WV 7.5' QUAD		OPERATOR: ARSENAL RESOURCES 65 Professional Place, Suite 200 Bridgeport, WV 26330
	COUNTY	DISTRICT	
DRAWN BY K.G.M.	FILE NO. 8597	DATE 9-28-18	CADD FILE: 2018WATERPURVEYOR.DWG
HARRISON		SIMPSON-OUTSIDE	