



---

west virginia department of environmental protection

---

Office of Oil and Gas  
601 57<sup>th</sup> Street, S.E.  
Charleston, WV 25304  
(304) 926-0450  
fax: (304) 926-0452

Austin Caperton, Cabinet Secretary  
[www.dep.wv.gov](http://www.dep.wv.gov)

Wednesday, November 13, 2019  
PERMIT MODIFICATION APPROVAL  
Horizontal 6A / New Drill

HG ENERGY II APPALACHIA, LLC  
5260 DUPONT ROAD  
PARKERSBURG, WV 26101

Re: Permit Modification Approval for NUTTER 1208 N-1H  
47-033-05940-00-00

**Lateral Spacing: shorten lateral from 20966' to 20352', updated leases.**

HG ENERGY II APPALACHIA, LLC

The Office of Oil and Gas has reviewed the attached permit modification for the above referenced permit. The attached modification has been approved and well work may begin. Please be reminded that the oil and gas inspector is to be notified twenty-four (24) hours before permitted well work is commenced.

If there are any questions, please feel free to contact me at (304) 926- 0450.

James A. Martin  
Chief

A handwritten signature in blue ink, appearing to read 'James A. Martin', is written over the typed name and title.

Operator's Well Number: NUTTER 1208 N-1H  
Farm Name: LINDA & WILLIAM W. BRODWATER III  
U.S. WELL NUMBER: 47-033-05940-00-00  
Horizontal 6A New Drill  
Date Modification Issued: 11/13/2019

Promoting a healthy environment.

WW-6B  
(04/15)

API NO. 47- 033 - 05940 MOB  
OPERATOR WELL NO. Nutter 1208 N-1H  
Well Pad Name: Nutter 1208

STATE OF WEST VIRGINIA  
DEPARTMENT OF ENVIRONMENTAL PROTECTION, OFFICE OF OIL AND GAS  
WELL WORK PERMIT APPLICATION

1) Well Operator: HG Energy II Appalachia, L.P.

<u>494519932</u>	<u>Harrison</u>	<u>Union</u>	<u>West Milford 7.5'</u>
------------------	-----------------	--------------	--------------------------

  
Operator ID County District Quadrangle

2) Operator's Well Number: Nutter 1208 N-1H Well Pad Name: Nutter 1208

3) Farm Name/Surface Owner: Nutter Public Road Access: SR 19

4) Elevation, current ground: 1162' Elevation, proposed post-construction: 1147'

5) Well Type (a) Gas  Oil \_\_\_\_\_ Underground Storage \_\_\_\_\_

Other \_\_\_\_\_

(b) If Gas Shallow  Deep \_\_\_\_\_

Horizontal  \_\_\_\_\_

6) Existing Pad: Yes or No No

*SDW*  
*09/20/2019*

7) Proposed Target Formation(s), Depth(s), Anticipated Thickness and Expected Pressure(s):  
Marcellus at 7013'/7064' and 51' in thickness. Anticipated pressure at 4314#.

8) Proposed Total Vertical Depth: 7050'

9) Formation at Total Vertical Depth: Marcellus

10) Proposed Total Measured Depth: 20,352' ✓

11) Proposed Horizontal Leg Length: 12,577' ✓

12) Approximate Fresh Water Strata Depths: 135', 500'

13) Method to Determine Fresh Water Depths: Nearest offset well data

14) Approximate Saltwater Depths: 1299', 1675'

15) Approximate Coal Seam Depths: 810' to 815'

16) Approximate Depth to Possible Void (coal mine, karst, other): None

RECEIVED  
Office of Oil and Gas

17) Does Proposed well location contain coal seams directly overlying or adjacent to an active mine? Yes \_\_\_\_\_ No

SEP 27 2019

WV Department of  
Environmental Protection

(a) If Yes, provide Mine Info: Name: \_\_\_\_\_  
Depth: \_\_\_\_\_  
Seam: \_\_\_\_\_  
Owner: \_\_\_\_\_

18)

**CASING AND TUBING PROGRAM**

<b>TYPE</b>	<b>Size (in)</b>	<b>New or Used</b>	<b>Grade</b>	<b>Weight per ft. (lb/ft)</b>	<b>FOOTAGE: For Drilling (ft)</b>	<b>INTERVALS: Left in Well (ft)</b>	<b>CEMENT: Fill-up (Cu. Ft.)/CTS</b>
Conductor	30"	New	LS	157.5	120'	120' ✓	Drilled In
Fresh Water/Coal	20"	NEW	J-55	94	1000'	1000' ✓	40% excess yield = 1.20, CTS
Intermediate 1	13 3/8"	NEW	J-55	68	1890'	1890' ✓	40% excess yield = 1.20, CTS
Intermediate 2	9 5/8"	NEW	J-55	40	2700'	2700' ✓	40% excess yield Lead/ 0% Excess Tail
Production	5 1/2"	NEW	P-110	23	20352'	20352' ✓	20% excess yield = 1.19, tail yield = 1.19
Tubing							
Liners							

<b>TYPE</b>	<b>Size (in)</b>	<b>Wellbore Diameter (in)</b>	<b>Wall Thickness (in)</b>	<b>Burst Pressure (psi)</b>	<b>Anticipated Max. Internal Pressure (psi)</b>	<b>Cement Type</b>	<b>Cement Yield (cu. ft./k)</b>
Conductor	30"	30"	.500				Drilled In
Fresh Water	20"	24"	.438	2110	1200	Type 1, Class A	40 % excess yield = 1.20, CTS
Coal/Storage	13 3/8"	17 1/2"	.480	3450		Type 1/Class A	Lead 40% excess, Tail 0% excess
Intermediate	9 5/8"	12 1/4"	.395	3950		Type 1/Class A	Lead 40% excess, Tail 0% Excess Lead
Production	5 1/2"	8 1/2"	.415	14520	12500	Type 1/Class A	20% excess yield = 1.19, tail yield = 1.19
Tubing							
Liners							

**PACKERS**

RECEIVED  
Office of Oil and Gas

SEP 27 2019

Kind:					WV Department of Environmental Protection
Sizes:					
Depths Set:					

19) Describe proposed well work, including the drilling and plugging back of any pilot hole:

Drill the vertical depth to the Marcellus at an estimated total vertical depth of approximately 7050 feet. Drill horizontal leg to estimated 12577' lateral length, 20,352' TMD. Hydraulically fracture stimulate and be capable of producing from the Marcellus Formation. Should we encounter an unanticipated void in the coal, we will install a minimum of 20' of casing below the void but not more than 100' below the void, set a basket and grout to surface. We plan to run an ECP above the Gantz/Dominion Storage interval to aid in sealing off and isolating the storage interval.

20) Describe fracturing/stimulating methods in detail, including anticipated max pressure and max rate:

The stimulation will be completed with multiple stages divided over the lateral length of the well. Stage spacing is dependent upon engineering design. Slickwater fracturing technique will be utilized on each stage using sand, water, and chemicals. See attached list. Maximum pressure not to exceed 12,500 psi.

21) Total Area to be disturbed, including roads, stockpile area, pits, etc., (acres): 22.420 acres

22) Area to be disturbed for well pad only, less access road (acres): 15.399 acres

23) Describe centralizer placement for each casing string:

No centralizers will be used with conductor casing.  
Freshwater - centralized every 3 joints to surface.  
Coal - Bow Spring on every joint, will also be running ECP for isolating storage zone.  
Intermediate - Bow Spring on first 2 joints then every third joint to 100' from surface.  
Production - Run 1 spiral centralizer every 5 joints from the top of the curve to surface. Run 1 spiral centralizer every 3 joints from the 1st 5.5' long joint to the top of the curve.

24) Describe all cement additives associated with each cement type:

Conductor -N/A. Casing to be drilled in w/ Dual Rotary Rig  
Fresh Water - 15.6 ppg PNE-1 + 3% bwoc CaCl<sub>2</sub> 40% Excess Yield = 1.20, CTS  
Coal - Lead: 15.4 ppg PNE-1 + 2.5% bwoc CaCl<sub>2</sub> 40% Excess / Tail: 15.9 ppg PNE-1 + 2.5% bwoc CaCl<sub>2</sub> zero% Excess. CTS  
Intermediate - Lead: 15.4 ppg PNE-1 + 2.5% bwoc CaCl<sub>2</sub> 40% Excess, Tail: 15.9 ppg, PNE-1 + 2.5% bwoc CaCl<sub>2</sub> zero% Excess. CTS  
Production - Lead: 14.5 ppg POZ-PNE-1 + 0.3% bwoc R3 + 1% bwoc ECI + 0.75 gal/ksk FP13L + 0.3% bwoc MPA170, Tail: 14.8 ppg PNE-1 + 0.35% bwoc R3 + 0.75 gal/ksk FP13L + 50% bwoc ASCA1 + 0.5% bwoc MPA170 20% Excess, Lead Yield=1.19, Tail Yield=1.94, CTS

25) Proposed borehole conditioning procedures:

Conductor - Ensure the hole is clean at TD.  
Fresh Water - Once casing is at setting depth, circulate a minimum of one hole volume with Fresh Water prior to pumping cement.  
Coal - Once casing is at setting depth, Circulate and condition at TD. Circulate a minimum of one hole volume prior to pumping cement.  
Intermediate - Once casing is at setting depth, Circulate and condition mud at TD. Circulate a minimum of one hole volume prior to pumping cement.  
Production - Once on bottom/TD with casing, circulate at max allowable pump rate for at least 2x bottoms up, or until returns and pump pressures indicate the hole is clean. Circulate a minimum of one hole volume prior to pumping cement.

RECEIVED  
Office of Oil and Gas  
SEP 27 2019  
WV Department of  
Environmental Protection

\*Note: Attach additional sheets as needed.



1208 N-1H  
Marcellus Shale Horizontal  
Harrison County, WV

	1208 N-1H SHL					14218955.94N 1803601.67E									
Ground Elevation	1147'					1208 N-1H LP					14218914.39N 1801864.93E				
Azm	340.538°					1208 N-1H BHL					14230768.05N 1797676.27E				

WELLBORE DIAGRAM	HOLE	CASING	GEOLOGY	TOP	BASE	MUD	CEMENT	CENTRALIZERS	CONDITIONING	COMMENTS
	30"	30" 157.5# LS	Conductor	0	120	AIR	N/A, Casing to be drilled in w/ Dual Rotary Rig	N/A	Ensure the hole is clean at TD.	Conductor casing = 0.5" wall thickness
	24"	20" 94# J-55	Fresh Water	0	135	AIR	15.6 ppg PNE-1 + 3% bwoc CaCl 40% Excess Yield=1.20 / CTS	Centralized every 3 joints to surface	Once casing is at setting depth, circulate a minimum of one hole volume with Fresh Water prior to pumping cement.	Surface casing = 0.438" wall thickness Burst=2110 psi
			Kittanning Coal	810	815					
			Coal/Fresh Water	0	1000					
	17.5"	13-3/8" 68# J-55 BTC	Little/Big Lime	1276 / 1317	1301 / 1393	AIR / KCL Salt Polymer	Lead: 15.4 ppg PNE-1 + 2.5% bwoc CaCl 40% Excess / Tail: 15.9 ppg PNE-1 + 2.5% bwoc CaCl zero% Excess. CTS	Bow Spring on every joint <i>*will also be running ECP for isolating storage zone*</i>	Once casing is at setting depth, Circulate and condition at TD. Circulate a minimum of one hole volume prior to pumping cement.	Intermediate casing = 0.480" wall thickness Burst=3450 psi
			Injun / Gantz (Storage)	1393 / 1680	1499 / 1740					
			Intermediate 1	0	1890					
	12.25"	9-5/8" 40# J-55 BTC	Fifty / Thirty Foot	1800 / 1880	1847 / 1892	AIR / KCL Salt Polymer	Lead: 15.4 ppg PNE-1 + 2.5% bwoc CaCl 40% Excess / Tail: 15.9 ppg PNE-1 + 2.5% bwoc CaCl zero% Excess. CTS	Bow Spring on first 2 joints then every third joint to 100' form surface	Once casing is at setting depth, Circulate and condition mud at TD. Circulate a minimum of one hole volume prior to pumping cement.	Intermediate casing = 0.395" wall thickness Burst=3950 psi
			Gordon Stray / Gordon	1935 / 2000	2000 / 2090					
			5th Sand	2185	2220					
			Bayard Sand	2275	2310					
	8.5" Vertical	5-1/2" 23# P-110 HP CDC HTQ	Speechley	2895	2913	9.0ppg SOB M	<b>Lead:</b> 14.5 ppg POZ:PNE-1 + 0.3% bwoc R3 + 1% bwoc EC1 + 0.75 gal/sk FP13L + 0.3% bwoc MPA170 <b>Tail:</b> 14.8 ppg PNE-1 + 0.35% bwoc R3 + 0.75 gal/sk FP13L + 50% bwoc ASCA1 + 0.5% bwoc MPA170 20% Excess Lead Yield=1.19 Tail Yield=1.94 CTS	Run 1 spiral centralizer every 5 joints from the top of the curve to surface.	Once on bottom/TD with casing, circulate at max allowable pump rate for at least 2x bottoms up, or until returns and pump pressures indicate the hole is clean. Circulate a minimum of one hole volume prior to pumping cement.	Production casing = 0.415" wall thickness Burst=16240 psi Note:Actual centralizer schedules may be changed due to hole conditions
			Balltown	3115	3155					
			Benson	4200	4233					
			West Falls	4770	6015	11.5ppg-12.5ppg SOB M		Run 1 spiral centralizer every 3 joints from the 1st 5.5" long joint to the top of the curve.		
Rhinestreet			6015	6290						
Cashaqua			6290	6491						
Middlesex			6491	6571						
West River			6571	6664						
Burkett			6664	6690						
Tully Limestone			6690	6794						
Hamilton	6794	7013								
Marcellus	7013	7064	11.5ppg-12.5ppg SOB M							
TMD / TVD (Production)	20352	7050								
8.5" Lateral			Onondaga	7064						

LP @ 7050' TVD / 7775' MD

8.5" Hole - Cemented Long String  
5-1/2" 23# P-110 HP CDC HTQ

+/-12577' ft Lateral

TD @ +/-7050' TVD  
+/-20352' MD

WV Department of Environmental Protection  
 RECEIVED  
 Office of Oil and Gas  
 SEP 27 2019

X=centralizers

**INFORMATION SUPPLIED UNDER WEST VIRGINIA CODE  
Chapter 22, Article 6A, Section 5(a)(5)  
IN LIEU OF FILING LEASE(S) AND OTHER CONTINUING CONTRACT(S)**

Under the oath required to make the verification on page 1 of this Notice and Application, I depose and say that I am the person who signed the Notice and Application for the Applicant, and that –

- (1) the tract of land is the same tract described in this Application, partly or wholly depicted in the accompanying plat, and described in the Construction and Reclamation Plan;
- (2) the parties and recordation data (if recorded) for lease(s) or other continuing contract(s) by which the Applicant claims the right to extract, produce or market the oil or gas are as follows:

Lease Name or Number	Grantor, Lessor, etc.	Grantee, Lessee, etc.	Royalty	Book/Page
----------------------	-----------------------	-----------------------	---------	-----------

**\*\*See Attached\*\***

**Acknowledgement of Possible Permitting/Approval  
In Addition to the Office of Oil and Gas**

The permit applicant for the proposed well work addressed in this application hereby acknowledges the possibility of the need for permits and/or approvals from local, state, or federal entities in addition to the DEP, Office of Oil and Gas, including but not limited to the following:

- WV Division of Water and Waste Management
- WV Division of Natural Resources WV Division of Highways
- U.S. Army Corps of Engineers
- U.S. Fish and Wildlife Service
- County Floodplain Coordinator

The applicant further acknowledges that any Office of Oil and Gas permit in no way overrides, replaces, or nullifies the need for other permits/approvals that may be necessary and further affirms that all needed permits/approvals should be acquired from the appropriate authority before the affected activity is initiated.

Well Operator: HG Energy II Appalachia, LLC  
 By: Diane White *Diane White*  
 Its: Agent

RECEIVED  
Office of Oil and Gas

SEP 27 2019

**HG Energy II Appalachia, LLC  
1208 N-1H LEASE CHAIN**

RECEIVED  
Office of Oil and Gas  
SEP 27 2019  
WV Department of  
Environmental Protection

TRACT #	LEGACY LEASE NUMBER	TAX MAP	LEASE NUMBER	GRANTOR/LESSOR	GRANTEE/LESSEE	ROYALTY	DEED BOOK	PAGE				
1	FK020606	17-20-0444-0011-0000, 17-20-0444-0011-0001, 17-20-0444-0011-0002, 17-20-0444-0011-0003, 17-20-0444-0012-0000, 17-12-0444-0013-0000, 17-12-0444-0014-0000, 17-12-0444-0021-0000, 17-12-0444-0021-0001, 17-12-0444-0022-0000, 17-12-0445-0001-0000, 17-12-0445-0002-0000, 17-12-0445-0009-0000, 17-12-0445-0010-0000, 17-12-0445-0011-0000	Q100370000	J.B. GUSMAN AND ADALINE GUSMAN	TREAT AND CRAWFORD	NOT LESS THAN 1/8	158	8				
				TREAT AND CRAWFORD	UNITED FUEL GAS COMPANY	ASSIGNMENT	226	359				
				UNITED FUEL GAS COMPANY	FAYETTE COUNTY GAS COMPANY	ASSIGNMENT	UNRECORDED					
				FAYETTE COUNTY GAS COMPANY	HOPE NATURAL GAS	ASSIGNMENT	201	3				
				HOPE NATURAL GAS COMPANY	CONSOLIDATED GAS SUPPLY COMPANY	MERGER/NAME CHANGE	903	179				
				CONSOLIDATED GAS SUPPLY CORPORATION	CONSOLIDATED GAS TRANSMISSION CORPORATION	ASSIGNMENT	1136	250				
				CONSOLIDATED GAS TRANSMISSION CORPORATION	CNG TRANSMISSION CORPORATION	MERGER/NAME CHANGE	51	795				
				CNG TRANSMISSION CORPORATION	DOMINION TRANSMISSION, INC.	MERGER/NAME CHANGE	58	362				
				DOMINION TRANSMISSION, INC.	DOMINION EXPLORATION & PRODUCTION, INC.	ASSIGNMENT	1409	680				
				DOMINION TRANSMISSION, INC.	DOMINION EXPLORATION & PRODUCTION, INC.	ASSIGNMENT	1442	356				
				DOMINION EXPLORATION & PRODUCTION, INC.	DOMINION TRANSMISSION, INC.	ASSIGNMENT	1457	978				
				DOMINION TRANSMISSION, INC.	CNX GAS COMPANY LLC	MEMORANDUM FARMOUT AGREEMENT	1522	33				
				CNX GAS COMPANY LLC	NOBLE ENERGY, INC.	LIMITED PARTIAL ASSIGNMENT (50%)	1543	1235				
				DOMINION TRANSMISSION, INC.	CNX GAS COMPANY LLC AND NOBLE ENERGY, INC.	PARTIAL ASSIGNMENT (32%)	1576	125				
				CNX GAS COMPANY LLC	NOBLE ENERGY, INC.	ASSIGNMENT	1584	942				
				NOBLE ENERGY, INC.	HG ENERGY II APPALACHIA, LLC	ASSIGNMENT	1600	692				
				DOMINION TRANSMISSION, INC.	DOMINION ENERGY TRANSMISSION, INC.	MERGER/NAME CHANGE	WVSOS					
				DOMINION ENERGY TRANSMISSION, INC.	HG ENERGY II APPALACHIA, LLC	SECOND AMENDMENT TO MEMORANDUM OF FARMOUT AGREEMENT	1601	581				
				6	LC014207	17-12-0425-0031-0003 17-12-0425-0031-0000	Q101051000	LEEMAN B. MAXWELL HEIRS	HOPE NATURAL GAS COMPANY	NOT LESS THAN 1/8	176	141
								HOPE NATURAL GAS COMPANY	CONSOLIDATED GAS SUPPLY CORPORATION	MERGER/NAME CHANGE	903	179
CONSOLIDATED GAS SUPPLY CORPORATION	CONSOLIDATED GAS TRANSMISSION CORPORATION	ASSIGNMENT	1136					250				
CONSOLIDATED GAS TRANSMISSION CORPORATION	CNG TRANSMISSION CORPORATION	MERGER/NAME CHANGE	51					795				
CNG TRANSMISSION CORPORATION	DOMINION TRANSMISSION, INC.	MERGER/NAME CHANGE	58					362				
DOMINION TRANSMISSION, INC.	DOMINION EXPLORATION & PRODUCTION, INC.	MERGER/NAME CHANGE	1325					874				
DOMINION TRANSMISSION, INC.	DOMINION EXPLORATION & PRODUCTION, INC.	ASSIGNMENT	1427					829				
DOMINION EXPLORATION & PRODUCTION, INC.	CNX GAS COMPANY LLC	MEMORANDUM FARMOUT AGREEMENT	1522					33				
CNX GAS COMPANY LLC	NOBLE ENERGY, INC.	LIMITED PARTIAL ASSIGNMENT (50%)	1543					1235				
DOMINION TRANSMISSION, INC.	CNX GAS COMPANY LLC AND NOBLE ENERGY, INC.	PARTIAL ASSIGNMENT (32%)	1576					125				
CNX GAS COMPANY LLC	NOBLE ENERGY, INC.	ASSIGNMENT	1584					942				
NOBLE ENERGY, INC.	HG ENERGY II APPALACHIA, LLC	ASSIGNMENT	1600					660				
NOBLE ENERGY, INC.	HG ENERGY II APPALACHIA, LLC	ASSIGNMENT	1600					692				
DOMINION TRANSMISSION, INC.	DOMINION ENERGY TRANSMISSION, INC.	MERGER/NAME CHANGE	WVSOS									
DOMINION ENERGY TRANSMISSION, INC.	HG ENERGY II APPALACHIA, LLC	SECOND AMENDMENT TO MEMORANDUM OF FARMOUT AGREEMENT	1601					581				
2	FK065462	17-12-0424-0052-0000 17-12-0424-0052-0001 17-12-0424-0052-0002 17-12-0424-0052-0003 17-12-0424-0052-0004 p/o 17-12-0425-0031-0000 p/o 17-12-0425-0031-0003 17-12-0425-0032-0000 p/o 17-12-0425-0033-0000 17-12-0425-0033-0001 17-12-0425-0033-0002 17-12-0425-0033-0003 p/o 17-12-0425-0033-0004	Q101063000					L. BASSELL MAXWELL AND BLONDA MAXWELL, HIS WIFE; AND, JANE M. HENDERSON, WIDOW	HOPE NATURAL GAS COMPANY	NOT LESS THAN 1/8	745	5
				HOPE NATURAL GAS COMPANY	CONSOLIDATED GAS SUPPLY CORPORATION	MERGER/NAME CHANGE	903	179				
				CONSOLIDATED GAS SUPPLY CORPORATION	CONSOLIDATED GAS TRANSMISSION CORPORATION	ASSIGNMENT	1136	250				
				CONSOLIDATED GAS TRANSMISSION CORPORATION	CNG TRANSMISSION CORPORATION	MERGER/NAME CHANGE	51	795				
				CNG TRANSMISSION CORPORATION	DOMINION TRANSMISSION, INC.	MERGER/NAME CHANGE	58	362				
				DOMINION TRANSMISSION, INC.	CNX GAS COMPANY, LLC	MEMORANDUM FARMOUT AGREEMENT	1522	33				
				CNX GAS COMPANY, LLC	NOBLE ENERGY, INC.	LIMITED PARTIAL ASSIGNMENT (50%)	1543	1245				
				DOMINION TRANSMISSION, INC.	CNX GAS COMPANY LLC AND NOBLE ENERGY, INC.	PARTIAL ASSIGNMENT (32%)	1576	125				
				CNX GAS COMPANY LLC	NOBLE ENERGY, INC.	ASSIGNMENT	1584	942				
				NOBLE ENERGY, INC.	HG ENERGY II APPALACHIA, LLC	ASSIGNMENT	1600	660				
				NOBLE ENERGY, INC.	HG ENERGY II APPALACHIA, LLC	ASSIGNMENT	1600	692				
				DOMINION TRANSMISSION, INC.	DOMINION ENERGY TRANSMISSION, INC.	MERGER/NAME CHANGE	WVSOS					

	17-12-0425-0033-0005	DOMINION ENERGY TRANSMISSION, INC.	HG ENERGY II APPALACHIA, LLC	SECOND AMENDMENT TO MEMORANDUM OF FARMOUT AGREEMENT	1601	581	✓
	17-12-0405-0075-0000	WM. BURNSIDE AND RUHARY BURNSIDE, HIS WIFE, AKA RLUHAMA BURNSIDE	E.J. WEST (212 ACRES)	NOT LESS THAN 1/8	118	353	
	17-12-2001-0017-0001						
	17-12-2001-0017-0002						
	17-12-2001-0018-0001						
	17-12-2001-0018-0003						
	17-12-2001-0018-0000						
	17-12-2001-0018-0002						
	17-12-2001-0018-0004						
	17-12-2001-0019-0000						
	17-12-2001-0020-0000	E.J. WEST	CONSOLIDATED OIL COMPANY	ASSIGNMENT	118	358	
	17-12-2001-0021-0000						
	17-12-2001-0022-0001						
	17-12-2001-0023-0000						
	17-12-2001-0023-0001						
	17-12-2001-0024-0000						
	17-12-2001-0033-0000						
	17-12-2001-0034-0000	CONSOLIDATED OIL COMPANY	E.C. BEARDSLEY	ASSIGNMENT	207	465	
	17-12-2001-0035-0000						
	17-12-2001-0036-0000						
	17-12-2001-0037-0000						
	17-12-2001-0038-0000						
	17-12-2001-0039-0000						
	17-12-2001-0040-0000						
	17-12-2001-0041-0000						
	17-12-2001-0024-0001	E.C. BEARDSLEY	THE WHEELING NATURAL GAS COMPANY	ASSIGNMENT	207	419	
	17-12-2001-0047-0000						
	17-12-2001-0001-0000						
	17-12-2001-0002-0000						
	17-12-2001-0003-0000						
	17-12-2001-0025-0000						
	17-12-2001-0026-0000						
	17-12-2001-0027-0000	THE WHEELING NATURAL GAS COMPANY, TRI STATE GAS COMPANY AND THE MANUFACTURERS LIGHT AND HEAT COMPANY	HOPE NATURAL GAS COMPANY	ASSIGNMENT	202	375	
	17-12-2001-0061-0000						
	17-12-2001-0062-0000						
	17-12-2001-0063-0000						
	17-12-2001-0064-0000						
	17-12-2001-0065-0000						
	17-12-2001-0066-0000						
	17-12-2001-0067-0000						
	17-12-2001-0055-0000						
	17-12-2001-0056-0000	HOPE NATURAL GASA COMPANY	CONSOLIDATED GAS SUPPLY CORPORATION (212 & 200 AC)	MERGER/NAME CHANGE	903	179	
	17-12-2001-0028-0000						
	17-12-2001-0028-0001						
	17-12-2001-0028-0002						
	17-12-2001-0028-0003						
	17-12-2001-0044-0000						
	17-12-2001-0004-0000						
	17-12-2001-0005-0000						
	17-12-2001-0005-0001	CONSOLIDATED GAS SUPPLY CORPORATION	CONSOLIDATED GAS TRANSMISSION CORPORATOIN	ASSIGNMENT	1136	250	



17-12-2001-0006-0000  
 17-12-2001-0007-0000  
 17-12-2001-0008-0000  
 17-12-2001-0009-0000  
 17-12-2001-0009-0001  
 17-12-2001-0010-0000  
 17-12-2001-0011-0000  
 17-12-2001-0012-0000  
 17-12-2001-0013-0000  
 17-12-2001-0014-0000  
 17-12-2001-0016-0000  
 17-12-2001-0029-0000  
 17-12-2001-0030-0000  
 17-12-2001-0030-0001  
 17-12-2001-0031-0000  
 17-12-2001-0032-0000  
 17-12-2001-0032-0001  
 17-12-2001-0068-0000  
 17-12-2001-0069-0000  
 17-12-2001-0070-0000  
 17-12-2001-0070-0001  
 17-12-2001-0076-0000  
 17-12-2001-0077-0000  
 17-12-2001-0078-0000  
 17-12-2001-0079-0000  
 17-12-2001-0080-0000  
 17-12-2001-0081-0000  
 17-12-2001-0082-0000  
 17-12-2001-0083-0000  
 17-12-2001-0084-0000  
 17-12-2001-0085-0000  
 17-12-2001-0086-0000  
 17-12-2001-0087-0000  
 17-12-2001-0088-0000  
 17-12-2001-0089-0000  
 17-12-0424-0004-0000  
 17-12-0424-0018-0000  
 17-12-0424-0018-0002  
 17-12-0424-0018-0003  
 17-12-0424-0018-0004  
 17-12-0424-0018-0005  
 17-12-0424-0019-0000  
 17-12-0424-0019-0001  
 17-12-0424-0019-0004  
 17-12-0424-0020-0000  
 17-12-0424-0021-0002  
 17-12-0424-0022-0000  
 17-12-0424-0023-0000  
 17-12-0424-0024-0000  
 17-12-0424-0025-0000  
 17-12-0424-0026-0000  
 17-12-0424-0026-0001  
 17-12-0424-0026-0002  
 17-12-0424-0026-0003

Q101084000

CONSOLIDATED GAS TRANSMISSION CORPORATION	CNG TRANSMISSION CORPORATION	MERGER/NAME CHANGE	51	795
CNG TRANSMISSION CORPORATION	DOMINION TRANSMISSION, INC.	MERGER/NAME CHANGE	58	362
DOMINION TRANSMISSION, INC.	CNX GAS COMPANY LLC	MEMORANDUM FARMOUT AGREEMENT	1522	33
DOMINION TRANSMISSION, INC.	CNX GAS COMPANY LLC	FIRST AMENDMENT TO MEMORANDUM OF FARMOUT AGREEMENT	1524	491
CNX GAS COMPANY LLC	NOBLE ENERGY, INC.	LIMITED PARTIAL ASSIGNMENT (50%)	1543	1235
DOMINION TRANSMISSION, INC.	CNX GAS COMPANY LLC AND NOBLE ENERGY, INC.	PARTIAL ASSIGNMENT (32%)	1576	125
CNX GAS COMPANY LLC	NOBLE ENERGY, INC.	ASSIGNMENT	1584	942



12	LC045309	17-12-424-0013	Q100872000	CONSOLIDATED GAS TRANSMISSION CORPORATION	CNG TRANSMISSION CORPORATION	MERGER/NAME CHANGE	51	795
				CNG TRANSMISSION CORPORATION	DOMINION TRANSMISSION, INC.	MERGER/NAME CHANGE	58	362
				DOMINION TRANSMISSION, INC.	DOMINION EXPLORATION & PRODUCTION, INC.	MERGER/NAME CHANGE	1325	874
				DOMINION TRANSMISSION, INC.	DOMINION EXPLORATION & PRODUCTION, INC.	ASSIGNMENT	1427	829
				DOMINION TRANSMISSION, INC.	CNX GAS COMPANY LLC	MEMORANDUM FARMOUT AGREEMENT	1522	33
				CNX GAS COMPANY LLC	NOBLE ENERGY, INC.	LIMITED PARTIAL ASSIGNMENT (50%)	1543	1235
				DOMINION TRANSMISSION, INC.	CNX GAS COMPANY LLC AND NOBLE ENERGY, INC.	PARTIAL ASSIGNMENT (32%)	1576	125
				CNX GAS COMPANY LLC	NOBLE ENERGY, INC.	ASSIGNMENT	1584	942
				NOBLE ENERGY, INC.	HG ENERGY II APPALACHIA, LLC	ASSIGNMENT	1600	660
				NOBLE ENERGY, INC.	HG ENERGY II APPALACHIA, LLC	ASSIGNMENT	1600	692
				DOMINION TRANSMISSION, INC.	DOMINION ENERGY TRANSMISSION, INC.	MERGER/NAME CHANGE	WVSOS	
				DOMINION ENERGY TRANSMISSION, INC.	HG ENERGY II APPALACHIA, LLC	SECOND AMENDMENT TO MEMORANDUM OF FARMOUT AGREEMENT	1601	581
				DAVID SCOTT ET AL	JOHN ROY	NOT LESS THAN 1/8	118	340
				JOHN ROY AND MARY S. ROY	FEDERAL OIL COMPANY	ASSIGNMENT (7/8INT.)	118	338
JOHN ROY AND MARY S. ROY	FEDERAL OIL COMPANY	ASSIGNMENT (1/8INT.)	119	223				
FEDERAL OIL COMPANY	T.N. BARNSDALL	ASSIGNMENT	133	448				
T.N. BARNSDALL, SOUTHER OIL COMPANY, FRED S. RICH, W.S. MORRIS	RESERVE GAS COMPANY	ASSIGNMENT	235	432				
RESERVE GAS COMPANY	HOPE NATURAL GAS COMPANY	ASSIGNMENT	432	229				
RESERVE GAS COMPANY	HOPE NATURAL GAS COMPANY	MERGER/NAME CHANGE	508	573				
HOPE NATURAL GAS COMPANY	CONSOLIDATED GAS SUPPLY CORPORATION	MERGER/NAME CHANGE	903	179				
CONSOLIDATED GAS SUPPLY CORPORATION	CONSOLIDATED GAS TRANSMISSION CORPORATION	ASSIGNMENT	1136	250				
CONSOLIDATED GAS TRANSMISSION CORPORATION	CNG TRANSMISSION CORPORATION	MERGER/NAME CHANGE	51	795				
CNG TRANSMISSION CORPORATION	DOMINION TRANSMISSION, INC.	MERGER/NAME CHANGE	58	362				
DOMINION TRANSMISSION, INC.	DOMINION EXPLORATION & PRODUCTION, INC.	MERGER/NAME CHANGE	1325	874				
DOMINION TRANSMISSION, INC.	DOMINION EXPLORATION & PRODUCTION, INC.	ASSIGNMENT	1427	829				
DOMINION TRANSMISSION, INC.	CNX GAS COMPANY LLC	MEMORANDUM FARMOUT AGREEMENT	1522	33				
CNX GAS COMPANY LLC	NOBLE ENERGY, INC.	LIMITED PARTIAL ASSIGNMENT (50%)	1543	1235				
DOMINION TRANSMISSION, INC.	CNX GAS COMPANY LLC AND NOBLE ENERGY, INC.	PARTIAL ASSIGNMENT (32%)	1576	125				
CNX GAS COMPANY LLC	NOBLE ENERGY, INC.	ASSIGNMENT	1584	942				
NOBLE ENERGY, INC.	HG ENERGY II APPALACHIA, LLC	ASSIGNMENT	1600	660				
NOBLE ENERGY, INC.	HG ENERGY II APPALACHIA, LLC	ASSIGNMENT	1600	692				
DOMINION TRANSMISSION, INC.	DOMINION ENERGY TRANSMISSION, INC.	MERGER/NAME CHANGE	WVSOS					
DOMINION ENERGY TRANSMISSION, INC.	HG ENERGY II APPALACHIA, LLC	SECOND AMENDMENT TO MEMORANDUM OF FARMOUT AGREEMENT	1601	581				
WILLIAM AND RUHAMA BURNSIDE	E. J. WEST	NOT LESS THAN 1/8	118	360				
E. J. WEST	CONSOLIDATED OIL COMPANY	ASSIGNMENT	118	358				
CONSOLIDATED OIL COMPANY	E.C. BEARDSLEY	ASSIGNMENT	207	465				
E.C. BEARDSLEY	THE WHEELING NATURAL GAS COMPANY	ASSIGNMENT	207	419				
THE WHEELING NATURAL GAS COMPANY, TRI STATE GAS COMPANY AND THE MANUFACTURERS LIGHT AND HEAT COMPANY	HOPE NATURAL GAS COMPANY	ASSIGNMENT	202	375				
HOPE NATURAL GASA COMPANY	CONSOLIDATED GAS SUPPLY CORPORATION (212 & 200 AC)	MERGER/NAME CHANGE	903	179				
CONSOLIDATED GAS SUPPLY CORPORATION	CONSOLIDATED GAS TRANSMISSION CORPORATOIN	ASSIGNMENT	1136	250				
CONSOLIDATED GAS TRANSMISSION CORPORATION	CNG TRANSMISSION CORPORATION	MERGER/NAME CHANGE	51	795				
CNG TRANSMISSION CORPORATION	DOMINION TRANSMISSION, INC.	MERGER/NAME CHANGE	58	362				
DOMINION TRANSMISSION, INC.	CNX GAS COMPANY LLC	MEMORANDUM FARMOUT AGREEMENT	1522	33				
DOMINION TRANSMISSION, INC.	CNX GAS COMPANY LLC	FIRST AMENDMENT TO MEMORANDUM OF FARMOUT AGREEMENT	1524	491				
CNX GAS COMPANY LLC	NOBLE ENERGY, INC.	LIMITED PARTIAL ASSIGNMENT (50%)	1543	1235				
DOMINION TRANSMISSION, INC.	CNX GAS COMPANY LLC AND NOBLE ENERGY, INC.	PARTIAL ASSIGNMENT (32%)	1576	125				
CNX GAS COMPANY LLC	NOBLE ENERGY, INC.	ASSIGNMENT	1584	942				
NOBLE ENERGY, INC.	HG ENERGY II APPALACHIA, LLC	ASSIGNMENT	1600	660				
NOBLE ENERGY, INC.	HG ENERGY II APPALACHIA, LLC	ASSIGNMENT	1600	692				

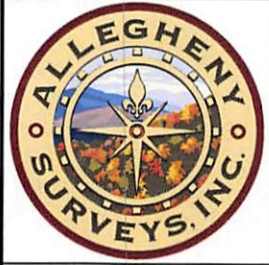
				DOMINION TRANSMISSION, INC.	DOMINION ENERGY TRANSMISSION, INC.	MERGER/NAME CHANGE	WVSOS		
				DOMINION ENERGY TRANSMISSION, INC.	HG ENERGY II APPALACHIA, LLC	SECOND AMENDMENT TO MEMORANDUM OF FARMOUT AGREEMENT		1601	581
				WILLIAM AND RUHAMA BURNSIDE	RESERVE GAS COMPANY	NOT LESS THAN 1/8		193	444
				RESERVE GAS COMPANY	HOPE NATURAL GAS COMPANY	MERGER/NAME CHANGE		37	350
				HOPE NATURAL GAS COMPANY	CONSOLIDATED GAS SUPPLY CORPORATION	MERGER/NAME CHANGE		903	179
				FAYETTE COUNTY GAS COMPANY	HOPE NATURAL GAS	ASSIGNMENT		201	3
				W.B. BERRY	J&J ENTERPRISES	ASSIGNMENT		1065	271
				CONSOLIDATED GAS SUPPLY CORPORATION	CONSOLIDATED GAS TRANSMISSION CORPORATION	ASSIGNMENT		1136	250
				J&J ENTERPRISES, BENSON DRILLING ASSOCIATION NO. 1	ENSOURCE, INC.	ASSIGNMENT		1187	246
				CONSOLIDATED GAS TRANSMISSION CORPORATION	CNG TRANSMISSION CORPORATION	MERGER/NAME CHANGE		51	795
				J&J ENTERPRISES	EASTERN AMERICAN ENERGY CORPORATION	MERGER/NAME CHANGE		1200	1110
				ENSOURCE, INC.	UMC PETROLEUM CORPORATION	MERGER/NAME CHANGE	WVSOS		
				EASTERN AMERICAN ENERGY CORPORATION	UMC PETROLEUM CORPORATION	ASSIGNMENT		1226	1040
				CNG TRANSMISSION CORPORATION	UMC PETROLEUM CORPORATION	CONSENT TO ASSIGNMENT		1226	1009
				BENSON DRILLING ASSOCIATES JV1	UMC PETROLEUM CORPORATION	ASSIGNMENT		1262	399
				UMC PETROLEUM CORPORATION	ASHLAND EXPLORATION, INC.	ASSIGNMENT		1263	494
				ASHLAND EXPLORATION HOLDINGS, INC.	BLAZER ENERGY CORPORATION	ASSIGNMENT		1294	299
				BLAZER ENERGY CORP., EASTERN STATES OIL AND GAS, INC. EASTERN STATES EXPLORATION COMPANY, EASTERN SEVEN, LLC	EASTERN SERIES 1997 TRUST	ASSIGNMENT		1296	909
				BLAZER ENERGY CORP., EASTERN STATES OIL AND GAS, INC. EASTERN STATES EXPLORATION COMPANY, EASTERN SEVEN, LLC	EASTERN SERIES 1997 TRUST	ASSIGNMENT		1309	463
				EASTERN SEVEN, LLC, EQUITABLE PRODUCTION - EASTERN STATES, INC., EQUITABLE PRODUCTION - EASTERN EXPLORATION, INC. FKA	EASTERN SERIES 1997 TRUST	CORRECTIVE ASSIGNMENT AND STIPULATION OF INTEREST		1324	156
				EASTERN SEVEN, INC.	EASTERN STATES OIL & GAS, INC.	ASSIGNMENT		1316	562
				EASTERN STATES OIL AND AS, INC.	BLAZER ENERGY CORPORATION	MERGER/NAME CHANGE		58	98
				CNG TRANSMISSION CORPORATION	DOMINION TRANSMISSION CORPORATION	MERGER/NAME CHANGE		59	1227
				DOMINION TRANSMISSION, INC.	HG ENERGY II APPALACHIA, LLC	Third Amendment to Farmout Agreement		1621	1295
				GEO W WASHBURN ET AL	RESERVE GAS COMPANY	NOT LESS THAN 1/8		179	404
				RESERVE GAS COMPANY	HOPE NATURAL GAS COMPANY	MERGER/NAME CHANGE		508	573
				HOPE NATURAL GAS COMPANY	CONSOLIDATED GAS SUPPLY CORPORATION	MERGER/NAME CHANGE		903	179
				CONSOLIDATED GAS SUPPLY CORPORATION	CONSOLIDATED GAS TRANSMISSION CORPORATION	ASSIGNMENT		1136	250
				CONSOLIDATED GAS TRANSMISSION CORPORATION	CNG TRANSMISSION CORPORATION	MERGER/NAME CHANGE		51	795
				CNG TRANSMISSION CORPORATION	EMAX OIL COMPANY	WELLBORE ASSIGNMENT		1261	1021
				EMAX OIL COMPANY	CABOT OI AND GAS CORPORATION	COUNTERPART ASSIGNMENT		1244	755
				CABOT OIL AND GS CORPORATION	ENERVEST APPALACHIA L.P.	CONVEYANCE		1314	1012
				CNG TRANSMISSION CORPORATION	DOMINION TRANSMISSION, INC.	MERGER/NAME CHANGE		58	362
				DOMINION TRANSMISSION, INC.	DOMINION ENERGY TRANSMISSION, INC.	MERGER/NAME CHANGE	WVSOS		
				DOMINION ENERGY TRANSMISSION, INC.	HG ENERGY II APPALACHIA, LLC	SECOND AMENDMENT TO MEMORANDUM OF FARMOUT AGREEMENT		1621	1295
				LARA BETH RAMSBURG	HG ENERGY II APPALACHIA LLC	NOT LESS THAN 1/8		1615	673
				CAROLYN S.J. HOOVER	HG ENERGY II APPALACHIA LLC	NOT LESS THAN 1/8		1615	680
				JOE LAW	HG ENERGY II APPALACHIA LLC	MINERAL DEED		1606	779
				OLGA E WASHBURN ET AL	CONSOLIDATED GAS SUPPLY CORPORATION	NOT LESS THAN 1/8		923	476
				CONSOLIDATED GAS SUPPLY CORPORATION	CONSOLIDATED GAS TRANSMISSION CORPORATION	ASSIGNMENT		1136	250
				CONSOLIDATED GAS TRANSMISSION CORPORATION	CNG TRANSMISSION CORPORATION	MERGER/NAME CHANGE		51	795
				CNG TRANSMISSION CORPORATION	EMAX OIL COMPANY	WELLBORE ASSIGNMENT		1261	1021
				EMAX OIL COMPANY	CABOT OI AND GAS CORPORATION	COUNTERPART ASSIGNMENT		1244	755
				CABOT OIL AND GS CORPORATION	ENERVEST APPALACHIA L.P.	CONVEYANCE		1314	1012
				CNG TRANSMISSION CORPORATION	DOMINION TRANSMISSION, INC.	MERGER/NAME CHANGE		58	362
				DOMINION TRANSMISSION, INC.	DOMINION ENERGY TRANSMISSION, INC.	MERGER/NAME CHANGE	WVSOS		
				DOMINION ENERGY TRANSMISSION, INC.	HG ENERGY II APPALACHIA, LLC	SECOND AMENDMENT TO MEMORANDUM OF FARMOUT AGREEMENT		1621	1295
				LARA BETH RAMSBURG	HG ENERGY II APPALACHIA LLC	NOT LESS THAN 1/8		1615	673

		17-20-2901-0211-0000 TO 17-20-2901-0217-0000		CAROLYN S.J. HOOVER	HG ENERGY II APPALACHIA LLC	NOT LESS THAN 1/8	1615	680		
		17-20-2901-0219-0000		JOE LAW	HG ENERGY II APPALACHIA LLC	MINERAL DEED	1606	779 ✓		
21.2		17-20-2901-0007-000	HGII108	JARED JAY RAMSBURG	HG ENERGY II APPALACHIA LLC	NOT LESS THAN 1/8	1619	542 ✓		
21.3		17-20-2901-0008-000, 17-20-2901-0009-000	HGII109	JACKSON LODGE NO. 35 A.F. & A.M.	HG ENERGY II APPALACHIA LLC	NOT LESS THAN 1/8	1619	604 ✓		
21.4		17-20-2901-0010-000	HGII110	JACKSON LODGE NO. 35 A.F. & A.M.	HG ENERGY II APPALACHIA LLC	NOT LESS THAN 1/8	1619	612 ✓		
19	FK052855	17-20-0404-0037-0000 17-20-0404-0036-0000 17-20-0404-0035-0000 17-20-0404-0034-0000 17-20-2901-0100-000 ET AL	Q101019000	LLOYD WASHBURN ET AL	SOUTH PENN OIL COMPANY	NOT LESS THAN 1/8	1443	0975		
				SOUTH PENN OIL COMPANY	RESERVE GAS COMPANY	ASSIGNMENT	215	351		
				RESERVE GAS COMPANY	HOPE NATURAL GAS COMPANY	MERGER/NAME CHANGE	WVSOS			
				HOPE NATURAL GAS COMPANY	CONSOLIDATED GAS SUPPLY CORPORATION	MERGER/NAME CHANGE	903	179		
				CONSOLIDATED GAS SUPPLY CORPORATION	CONSOLIDATED GAS TRANSMISSION CORPORATION	ASSIGNMENT	1136	250		
				CONSOLIDATED GAS TRANSMISSION CORPORATION	CNG TRANSMISSION CORPORATION	MERGER/NAME CHANGE	51	795		
				CNG TRANSMISSION CORPORATION	DOMINION TRANSMISSION, INC.	MERGER/NAME CHANGE	58	362		
				DOMINION TRANSMISSION, INC.	CNX GAS COMPANY, LLC	MEMORANDUM FARMOUT AGREEMENT	1522	33		
				CNX GAS COMPANY LLC	NOBLE ENERGY, INC.	LIMITED PARTIAL ASSIGNMENT (50%)	1543	1245		
				DOMINION TRANSMISSION, INC.	CNX GAS COMPANY LLC AND NOBLE ENERGY, INC.	PARTIAL ASSIGNMENT (32%)	1576	125		
				CNX GAS COMPANY LLC	NOBLE ENERGY, INC.	ASSIGNMENT	1584	942		
				NOBLE ENERGY, INC.	HG ENERGY II APPALACHIA, LLC	ASSIGNMENT	1600	660		
				NOBLE ENERGY, INC.	HG ENERGY II APPALACHIA, LLC	ASSIGNMENT	1600	692		
				DOMINION TRANSMISSION, INC.	DOMINION ENERGY TRANSMISSION, INC.	MERGER/NAME CHANGE	WVSOS			
						DOMINION ENERGY TRANSMISSION, INC.	HG ENERGY II APPALACHIA, LLC	SECOND AMENDMENT TO MEMORANDUM OF FARMOUT AGREEMENT	1601	581 ✓
22	FK052902	17-20-0404-0032-0000 17-20-0404-0032-0001 17-20-0404-0032-0002 17-20-0404-0032-0003 17-20-0404-0032-0004 17-20-0404-0032-0005 17-20-0404-0032-0006 17-20-0404-0032-0007 17-20-0404-0032-0009 17-20-0404-0032-0010 17-20-0404-0033-0000 17-20-0404-0033-0001 17-20-0404-0033-0002 17-20-0404-0033-0003 17-20-0404-0033-0004 17-20-0404-0033-0005 17-20-0404-0033-0006 17-20-0404-0042-0000 17-20-0404-0043-0000 17-20-0404-0043-0001 17-20-0404-0043-0002 17-20-0404-0043-0003 17-20-0404-0043-0004 17-20-0404-0043-0005 17-20-0404-0043-0006 17-20-0404-0043-0007 17-20-0404-0043-0008 17-20-0404-0001-0000 17-20-0404-0002-0000 17-20-0404-0003-0000 17-20-0404-0004-0000 17-20-0404-0005-0000 17-20-0404-0006-0000 17-20-0404-0007-0000 17-20-0404-0008-0000	Q100475000	J.P. POST AND F.C. POST, HIS WIFE	RESERVE GAS COMPANY	NOT LESS THAN 1/8	174	214		
				RESERVE GAS COMPANY	HOPE NATURAL GAS COMPANY	MERGER/NAME CHANGE	508	573		
						HOPE NATURAL GAS COMPANY	CONSOLIDATED GAS SUPPLY CORPORATION	MERGER/NAME CHANGE	903	179
						CONSOLIDATED GAS SUPPLY CORPORATION	CONSOLIDATED GAS TRANSMISSION CORPORATION	ASSIGNMENT	1136	250
						CONSOLIDATED GAS TRANSMISSION CORPORATION	CNG TRANSMISSION CORPORATION	MERGER/NAME CHANGE	51	795
						CNG TRANSMISSION CORPORATION	DOMINION TRANSMISSION, INC.	MERGER/NAME CHANGE	58	362
						DOMINION TRANSMISSION, INC.	DOMINION EXPLORATION & PRODUCTION, INC.	MERGER/NAME CHANGE	1325	874
						DOMINION TRANSMISSION, INC.	DOMINION EXPLORATION & PRODUCTION, INC.	ASSIGNMENT	1427	829
						DOMINION TRANSMISSION, INC.	CNX GAS COMPANY LLC	MEMORANDUM FARMOUT AGREEMENT	1522	33
						CNX GAS COMPANY LLC	NOBLE ENERGY, INC.	LIMITED PARTIAL ASSIGNMENT (50%)	1543	1235
						DOMINION TRANSMISSION, INC.	CNX GAS COMPANY LLC AND NOBLE ENERGY, INC.	PARTIAL ASSIGNMENT (32%)	1576	125
						CNX GAS COMPANY LLC	NOBLE ENERGY, INC.	ASSIGNMENT	1584	942
						NOBLE ENERGY, INC.	HG ENERGY II APPALACHIA, LLC	ASSIGNMENT	1600	660
						NOBLE ENERGY, INC.	HG ENERGY II APPALACHIA, LLC	ASSIGNMENT	1600	692
						DOMINION TRANSMISSION, INC.	DOMINION ENERGY TRANSMISSION, INC.	MERGER/NAME CHANGE	WVSOS	
								SECOND AMENDMENT TO MEMORANDUM OF FARMOUT AGREEMENT	1601	581 ✓

I, the undersigned, hereby certify that this plat is correct to the best of my knowledge and belief and shows all the information required by law and the rules issued and prescribed by the Department of Environmental Protection.

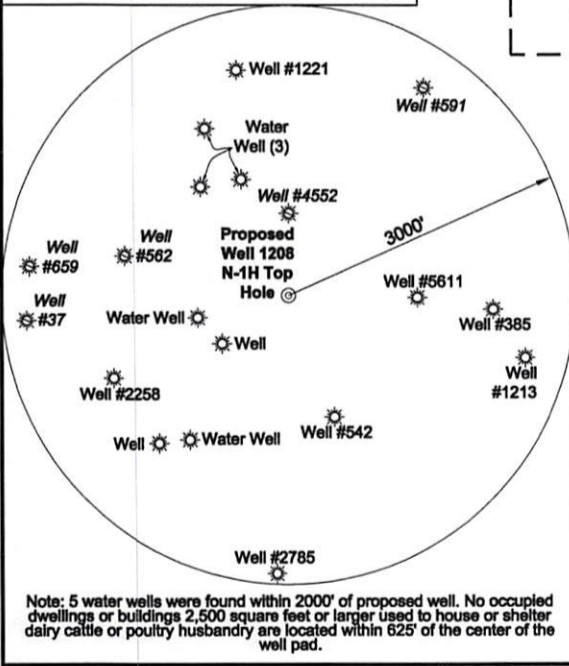
Dwayne D. Matheny, P.S. 2070

Tag	Bearing	Dist.
L1	S 36°48' E	1,226.4'
L2	S 21°29' E	1,242.3'
L3	S 89°47' W	1,355.7'
L4	N 68°11' W	1,178.0'
L5	S 88°38' W	1,737.2'



**Notes:**  
Well No. 1208 N-1H  
UTM NAD 1983 (USSF)  
Top Hole Coordinates  
N: 14,218,955.94' E: 1,803,601.67'  
Landing Point Coordinates  
N: 14,218,914.39' E: 1,801,864.93'  
Bottom Hole Coordinates  
N: 14,230,768.05' E: 1,797,676.27'

**Notes:** Well No. 1208 N-1H  
West Virginia Coordinate System of 1927, South Zone based upon Differential GPS Measurements.  
Top Hole coordinates Bottom Hole coordinates  
Latitude: 39°09'11.55" Latitude: 39°11'08.71"  
Longitude: 80°25'28.34" Longitude: 80°26'42.68"  
UTM Zone 17, NAD 1983  
Top Hole Coordinates Bottom Hole Coordinates  
N: 4,333,946.438m N: 4,337,546.777m  
E: 549,738.887m E: 547,932.823m  
Plat orientation and corner and well references are based upon the grid north meridian.  
Well location references are based upon the magnetic meridian.



Note: 5 water wells were found within 2000' of proposed well. No occupied dwellings or buildings 2,500 square feet or larger used to house or shelter dairy cattle or poultry husbandry are located within 625' of the center of the well pad.

FILE NO: 195-36-G-18  
DRAWING NO: 1208 N-1H Well Plat  
SCALE: 1" = 1500'  
MINIMUM DEGREE OF ACCURACY: Submeter  
PROVEN SOURCE OF ELEVATION: CORS, Bridgeport, WV

**STATE OF WEST VIRGINIA**  
DEPARTMENT OF ENVIRONMENTAL PROTECTION  
**OIL AND GAS DIVISION**

DATE: September 20 20 19  
OPERATOR'S WELL NO. 1208 N-1H  
API WELL NO  
47 - 033 - 05940  
STATE COUNTY PERMIT

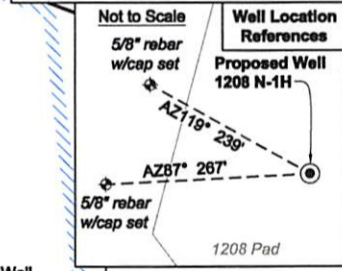
WELL TYPE:  OIL  GAS  LIQUID INJECTION  WASTE DISPOSAL  
(IF GAS) PRODUCTION:  STORAGE  DEEP  SHALLOW  
LOCATION: ELEVATION: 1,147' WATERSHED: Middle West Fork Creek QUADRANGLE: West Milford  
DISTRICT: Grant / Union COUNTY: Harrison  
SURFACE OWNER: Linda & William W. Brodwater III ACREAGE: 200  
ROYALTY OWNER: Leeman B. Maxwell Heirs, et al LEASE NO: ACREAGE: 247.84  
PROPOSED WORK:  DRILL  CONVERT  DRILL DEEPER  FRACTURE OR STIMULATE  PLUG OFF OLD FORMATION  
 PERFORATE NEW FORMATION  OTHER PHYSICAL CHANGE IN WELL (SPECIFY) LP & BH MOD  
 PLUG AND ABANDON  CLEAN OUT AND REPLUG TARGET FORMATION: Marcellus Shale ESTIMATED DEPTH: 7,050' TVD  
7,050' TVD  
20,352' MD

WELL OPERATOR: HG Energy II Appalachia, LLC DESIGNATED AGENT: Diane C. White  
ADDRESS: 5260 Dupont Road ADDRESS: 5260 Dupont Road  
Parkersburg, WV 26101 Parkersburg, WV 26101



**Legend**

- Proposed gas well
- Well Reference, as noted
- Monument, as noted
- Existing Well, as noted
- Existing Plugged Well, as noted
- Digitized Well, as noted
- Creek or Drain
- Existing Road
- Surface boundary (approx.)
- Interior surface tracts (approx.)

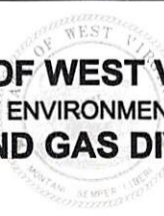


LONGITUDE 80 - 25 - 00  
4,901' to Top Hole  
8,222' to Bottom Hole

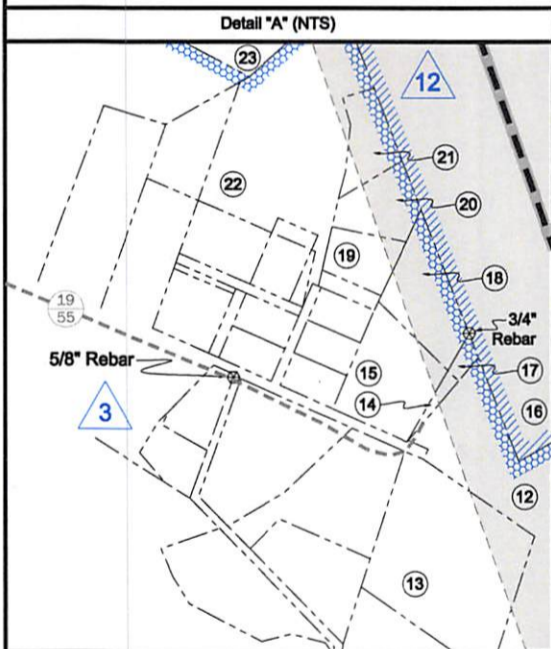
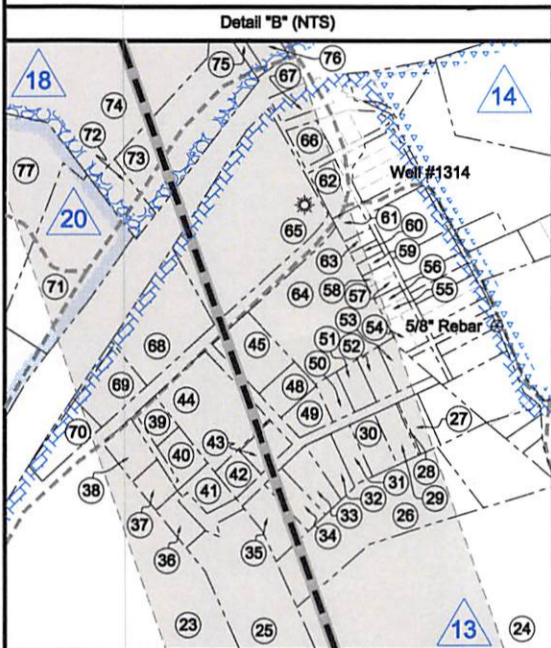
Top Hole  
7.5' Spot

SEAL

GRID NORTH



ID	Lease	ID	Lease
1	Jerome B. Gusman	16	Howard W. Vanscoy, et al
2	Leeman B. Maxwell Heirs	18	George W. Washburn, et al
3	William Burnside, et al	19	Lloyd Washburn, et al
4	Orie Myers, et al	20	William Burnside
5	Claudia Hacker, et al	21	Olga E. Washburn, et ux
6	Leeman B. Maxwell Heirs	21.2	HG Energy II 108
10	Rebecca D. Reed, et al	21.3	HG Energy II 109
11	David Scott, et al	21.4	HG Energy II 110
12	Nathan Post, et al	22	J.P. Post & C.F. Post
13	William Burnside, et al	23	Fee
14	Joseph Cheuvront, et al		



No.	TM / Par	Owner	Bk / Pg	Ac.
76	404 / 48	Trustees of Bethel Methodist Church	649 / 350	0.46
75	404 / 55.7	Bethel ME Church	1191 / 266	0.21
74	404 / 55.1	Terence L. Washburn	1332 / 1140	42.37
73	404 / 55.12	Bethel ME Church	1191 / 266	2.47
72	404 / 55.13	Terence Washburn	1322 / 1140	0.496
71	404 / 49	William M. McDonald	1387 / 584	2.75
70	424 / 7.1	Rennard D. & Gladis G. Rinehart	1367 / 1158	0.52
69	424 / 7	Ronnie & Sandy Cochran	1394 / 185	0.65
68	424 / 8	Carl D. & Joyce E. Ward	1227 / 767	1.56
67	2003 / 1	Donovan F. Randolph Estates, et al	W183 / 397	0.06
66	2003 / 2			0.84
65	404 / 50	Billy L. & Barbara E. Nuttler	953 / 526	3.77
64	2003 / 66	William & Grace Preece	1061 / 1168	3.11
63	2003 / 15	UNKNOWN	- / -	Lot 20
62	2003 / 5			0.19
61	2003 / 12	Velma Steif, et al	F095 / 796	0.15
60	2003 / 17			Lot 22
59	2003 / 19			Lot 24
58	2003 / 21	Edra B. Cox	WB117 / 12	Lot 26
57	2003 / 23			Lot 28
56	2003 / 25			Lot 30
55	2003 / 27	Brian & Kelli Rhoades	1522 / 736	Lot 32
54	2003 / 30			0.12
53	2003 / 63		1311 / 352	0.31
52	2003 / 62			0.25
51	2003 / 61	Nora Perrine	1165 / 171	0.24
50	2003 / 60	Roger & Diana Hurst	1165 / 165	0.23
49	2003 / 59	Donna Randolph	1004 / 948	0.30
48	2003 / 58		1473 / 409	0.34
47	404 / 8	Mary Ann Tiano	932 / 456	14.86
46	404 / 7			142.74
45	2003 / 56	Melinda Bibbee	1498 / 951	0.71
44	2003 / 55	James S. Murphy	1563 / 672	2.06
43	2003 / 54	Glenn Kirkpatrick	1454 / 295	0.32
42	2003 / 54.1	Carl & Carolyn James	999 / 805	0.23
41	424 / 6.6	Palmer C. Dolph II	1331 / 1127	0.34
40	424 / 6.3	Kimberly Sue Smithson	1364 / 506	0.34
39	424 / 6.5	Dale R. Holden	1368 / 135	0.30
38	424 / 6.1	John L. Homer	1212 / 1094	1 Lot
37	424 / 6.4	Todd Joseph Brown	1223 / 658	0.26
36	424 / 6.2	Jason & Teresa Allen	1501 / 702	0.27
35	2003 / 53	George & Madge Hennen	1345 / 808	0.56
34	2003 / 52		995 / 738	0.34
33	2003 / 51		986 / 728	0.38
32	2003 / 50	Heather J. & David L. Smallwood II	1408 / 638	0.33
31	2003 / 49	Albert Buzzelli	1295 / 507	0.30
30	2003 / 48	Kevin P. Barker	1336 / 633	0.35
29	2003 / 47	Howard D. & Judith J. Swick	1015 / 966	0.27
28	2003 / 46		1167 / 874	p/o Lot L
27	2003 / 46.1	Vivetta Carter	1340 / 747	0.27
26	2003 / 65	Christan & Katherine Meeker	1537 / 523	2.96
25	424 / 6.7	Wendy G. Richards	1444 / 1175	3.18
24	424 / 10	Joseph H. Mason & Dedire Mason Brown	WB119 / 1137	22.25
23	424 / 5	Joseph H. Mason	WB 87 / 514	41.13
22	424 / 53	Joe & Karen Gonzalez	1067 / 1095	6.04
21	424 / 55	Scott Louk	1378 / 139	0.874
20	424 / 55.3	James & Rhonda Kirby	1494 / 524	1.00
19	424 / 55.2	Amber Brooke Gaines	1548 / 73	0.808
18	424 / 29.1	Ovid & Joy Belt	1225 / 257	1.569
17	424 / 29	John & Paula Zirkle	1323 / 665	0.15
16	424 / 13	Gregory Gail Burnside	1326 / 146	34.60
15	424 / 28	Ovid & Joy Belt	1183 / 224	1.905
14	424 / 28.1	John & Paula Zirkle	1323 / 665	0.13
13	424 / 30	John & Paula Zirkle	1323 / 670	5.00
12	424 / 30.1	John & Paula Zirkle	1323 / 665	45.62
11	424 / 52.3	Robert J. Brightbill	1560 / 293	4.54
10	425 / 31.3	Gary S. & Melinda M. Brodwater	1354 / 175	2.00
9	424 / 52.1	Robert J. Brightbill	1560 / 293	139.98
8	424 / 52.2	David Keesucker	1533 / 1283	2.38
7	424 / 52	Bernice A. Keesucker	1186 / 552	2.17
6	425 / 31.1	Dona R. & David R. Scarff	1360 / 652	1.00
5	425 / 31.2	Linda & William W. Brodwater III	1343 / 1279	1.16
4	445 / 1		- / -	87.78
3	445 / 10	Lisa M. Nuttler	WB 687 / 445	66.87
2	445 / 2			84.57
1	425 / 31	Linda & William W. Brodwater III	1410 / 1045	247.84

FILE NO: 195-36-G-18  
DRAWING NO: 1208 N-1H Well Plat  
SCALE: 1" = 1500'  
MINIMUM DEGREE OF ACCURACY: Submeter  
PROVEN SOURCE OF ELEVATION: CORS, Bridgeport, WV

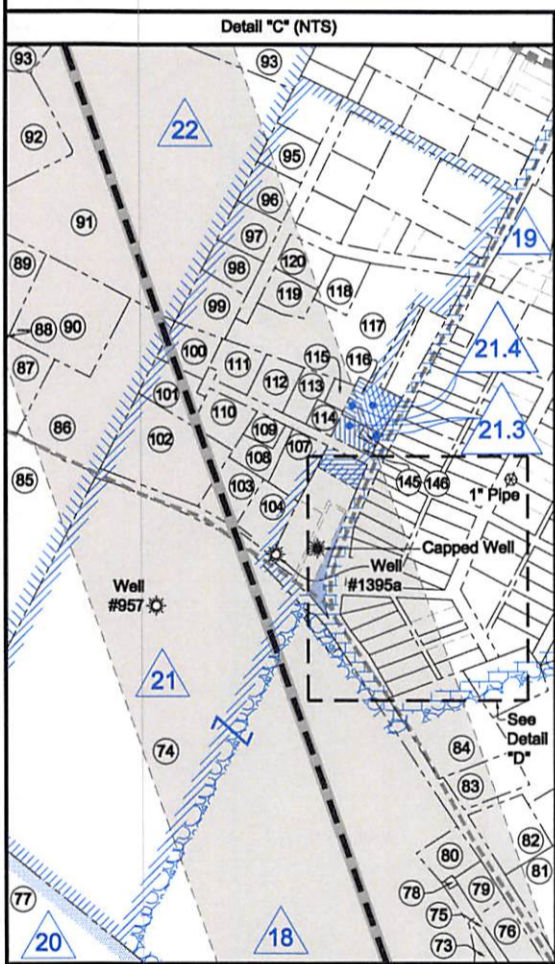
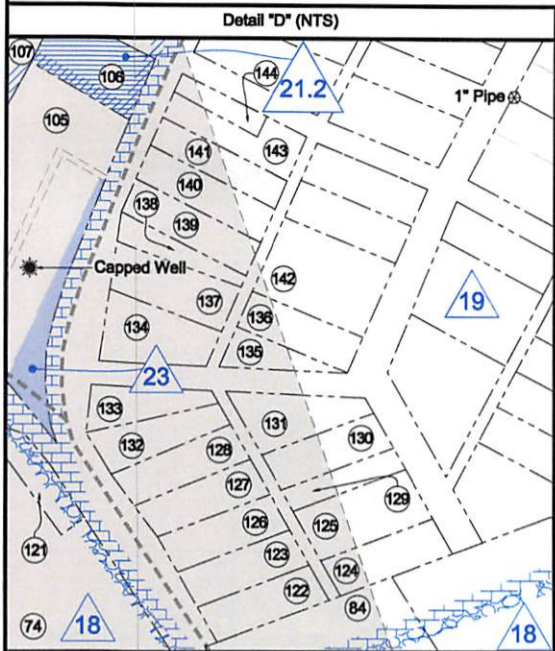
**STATE OF WEST VIRGINIA**  
DEPARTMENT OF ENVIRONMENTAL PROTECTION  
**OIL AND GAS DIVISION**

DATE: September 20 20 19  
OPERATOR'S WELL NO. 1208 N-1H  
API WELL NO  
47 - 033 - 05940  
STATE COUNTY PERMIT

WELL TYPE:  OIL  GAS  LIQUID INJECTION  WASTE DISPOSAL  
(IF GAS) PRODUCTION:  STORAGE  DEEP  SHALLOW

LOCATION: ELEVATION: 1,147' WATERSHED: Middle West Fork Creek QUADRANGLE: West Milford  
DISTRICT: Grant / Union COUNTY: Harrison  
SURFACE OWNER: Linda & William W. Brodwater III ACREAGE: 200  
ROYALTY OWNER: Leeman B. Maxwell Heirs, et al LEASE NO: \_\_\_\_\_ ACREAGE: 247.84  
PROPOSED WORK:  DRILL  CONVERT  DRILL DEEPER  FRACTURE OR STIMULATE  PLUG OFF OLD FORMATION  
 PERFORATE NEW FORMATION  OTHER PHYSICAL CHANGE IN WELL (SPECIFY) LP & BH MOD 7,050' TVD  
 PLUG AND ABANDON  CLEAN OUT AND REPLUG TARGET FORMATION: Marcellus Shale ESTIMATED DEPTH: 20,352' MD

WELL OPERATOR: HG Energy II Appalachia, LLC DESIGNATED AGENT: Diane C. White  
ADDRESS: 5260 Dupont Road ADDRESS: 5260 Dupont Road  
Parkersburg, WV 26101 Parkersburg, WV 26101



No.	TM / Par	Owner	Bk / Pg	Ac.
148	424 / 11.1	Eric A. & Alana N. Burnsides	1365 / 1089	13.92
147	424 / 31	Chris & Misty Montgomery	1449 / 358	15.30
146	2901 / 9	Trustees of Jackson Lodge 35	360 / 11	0.07
145	2901 / 8		809 / 27	0.16
144	2901 / 89.1	Oscar Lee Rhodes	1231 / 1177	0.07
143	2901 / 89	Robert & Martha Allaman	1208 / 964	0.17
142	2901 / 117	Jon S. Skinner, et al	WB185/401	0.344
141	2901 / 88	Sherron K. McKinney & Frankie Snyder	1297 / 539	0.15
140	2901 / 87			0.18
139	2901 / 86			0.18
138	2901 / 85			0.12
137	2901 / 84	Mary E. James	1223 / 1017	0.22
136	2901 / 115	John & Dreama Homer	1267 / 953	0.172
135	2901 / 114			0.172
134	2901 / 83	Ronzel C. Sandra K. Richards	1077 / 1129	-
133	2901 / 82			0.185
132	2901 / 81			0.191
131	2901 / 113			0.22
130	2901 / 112	Gary Michael Ward & Eugene B. Ward Jr.	WB139 / 736	0.17
129	2901 / 111			0.10
128	2901 / 80	Robert D. Will	1114 / 601	0.172
127	2901 / 79			0.172
126	2901 / 78			0.172
125	2901 / 110			0.241
124	2901 / 109	Jason & Rebecca Riggelman	1351 / 1030	0.172
123	2901 / 77			0.172
122	2901 / 76		1242 / 968	0.172
121	404 / 45			0.13
120	2901 / 212	Melvin & Mary E. James	1064 / 131	0.13
119	2901 / 219.1	Andrew & Denise Bellerose	1558 / 989	0.41
118	2901 / 216	Warren E. Davis	1594 / 739	0.40
117	2901 / 219	Christopher & Rachel Hurst	1329 / 972	0.43
116	2901 / 10	Sharon M. Johnson, Trustee of Oleta M. Post Irrev. Trust	1576 / 818	19.00
115	2901 / 200.1	June D. Courtney	1116 / 412	0.57
114	2901 / 199	William & June Courtney	1274 / 979	0.13
113	2901 / 200	Trustees of Jackson Lodge 35	1044 / 1036	0.172
112	2901 / 204	Beverly K. Rinehart	1274 / 1176	0.45
111	2901 / 203	Joyce A. Pristavec	1123 / 626	0.430
110	2901 / 196	Randall R. & Debra L. Stover	1132 / 76	0.387
109	2901 / 201	Eugene R. & Lisa D. Messer	1246 / 593	0.51
108	2901 / 201.1	Judith Ann Carlin	1314 / 338	0.51
107	2901 / 198	Ronzel C. & Sandra K. Richards	1340 / 856	0.35
106	2901 / 7	Doyle L. & Rebecca J. Puckett	1461 / 916	0.50
105	2901 / 3	Robert J. Hitt & Amanda Jo Hitt	1594 / 742	0.26
104	2901 / 195	Wilann Ariene Bise 99% Int. & Rebecca Jane Puckett 1% Int.	1437 / 432	1.50
103	2901 / 195.1	Jennifer L. & David K. Downward	1410 / 140	0.56
102	2901 / 194	Ronzel C. & Sandra K. Richards	1282 / 548	0.55
101	2901 / 202	Frank R. & Shelby J. Costello	1374 / 207	1.75
100	2901 / 197	Kenneth R. & Heien M. Queen	1486 / 488	0.56
99	2901 / 219.2	Brian & Karrell A. Vernon	1226 / 350	0.53
98	2901 / 217	Ryan & Sara Armstone	1402 / 603	1.19
97	2901 / 208	Edward & Loretta McElwee	1217 / 292	0.50
96	2901 / 207	James & Megan Williams	1512 / 262	0.50
95	2901 / 206	Sandra K. & Ersei E. Mogan Jr.	1332 / 1114	0.49
94	404 / 32.4	Thomas & Kristle Wardelle	1542 / 351	0.48
93	404 / 32.5	Post Heritage, LLC	1399 / 155	10.43
92	404 / 33	Richard P. & Carol L. Rapping	1399 / 71	12.70
91	404 / 32.9	William F. & Catherine A. Rapping	1399 / 87	14.74
90	404 / 33.6	Patricia R. & William T. Douglass	1399 / 93	11.90
89	404 / 33.3	Kenneth R. & Helen M. Queen	1292 / 1071	1.84
88	404 / 33.4	Marsha Romine	1333 / 190	1.82
87	404 / 33.1		1333 / 192	0.305
86	404 / 33.2	Lisa A. Moore	1369 / 1030	1.10
85	404 / 43	Richard E. Lawrence	1016 / 123	1.68
84	404 / 46	Perry L. & Deborah J. Post	1329 / 346	96.12
83	404 / 55.6	Annette C. Nichols	1370 / 901	1.68
82	404 / 55.5	Brian W. Myers	1439 / 1139	0.63
81	404 / 52			0.75
80	404 / 55.2	Jackson Lodge 35 A.F. & A.M.	342 / 378	2.90
79	404 / 47	Michael J. & Sandra R. Bode	1022 / 193	0.51
78	404 / 55.8	Bethel ME Church	828 / 539	0.31
77	424 / 2	Grant Union PSD	1184 / 949	0.02
		William Michael McDonald	1387 / 583	293.21

FILE NO: 195-36-G-18  
DRAWING NO: 1208 N-1H Well Plat  
SCALE: 1" = 1500'  
MINIMUM DEGREE OF ACCURACY: Submeter  
PROVEN SOURCE OF ELEVATION: CORS, Bridgeport, WV

STATE OF WEST VIRGINIA  
DEPARTMENT OF ENVIRONMENTAL PROTECTION  
OIL AND GAS DIVISION

DATE: September 20 2019  
OPERATOR'S WELL NO. 1208 N-1H  
API WELL NO  
47 - 033 - 05940  
STATE COUNTY PERMIT

WELL TYPE:  OIL  GAS  LIQUID INJECTION  WASTE DISPOSAL  
(IF GAS) PRODUCTION:  STORAGE  DEEP  SHALLOW

LOCATION: ELEVATION: 1,147' WATERSHED: Middle West Fork Creek QUADRANGLE: West Milford  
DISTRICT: Grant / Union COUNTY: Harrison  
SURFACE OWNER: Linda & William W. Brodwater III ACREAGE: 200  
ROYALTY OWNER: Leeman B. Maxwell Heirs, et al LEASE NO: ACREAGE: 247.84  
PROPOSED WORK:  DRILL  CONVERT  DRILL DEEPER  FRACTURE OR STIMULATE  PLUG OFF OLD FORMATION  
 PERFORATE NEW FORMATION  OTHER PHYSICAL CHANGE IN WELL (SPECIFY) LP & BH MOD 7,050' TVD  
 PLUG AND ABANDON  CLEAN OUT AND REPLUG TARGET FORMATION: Marcellus Shale ESTIMATED DEPTH: 20,352' MD

WELL OPERATOR: HG Energy II Appalachia, LLC DESIGNATED AGENT: Diane C. White  
ADDRESS: 5260 Dupont Road ADDRESS: 5260 Dupont Road  
Parkersburg, WV 26101 Parkersburg, WV 26101



I, the undersigned, hereby certify that this plat is correct to the best of my knowledge and belief and shows all the information required by law and the rules issued and prescribed by the Department of Environmental Protection.

Dwayne D. Matheny, P.S. 2070

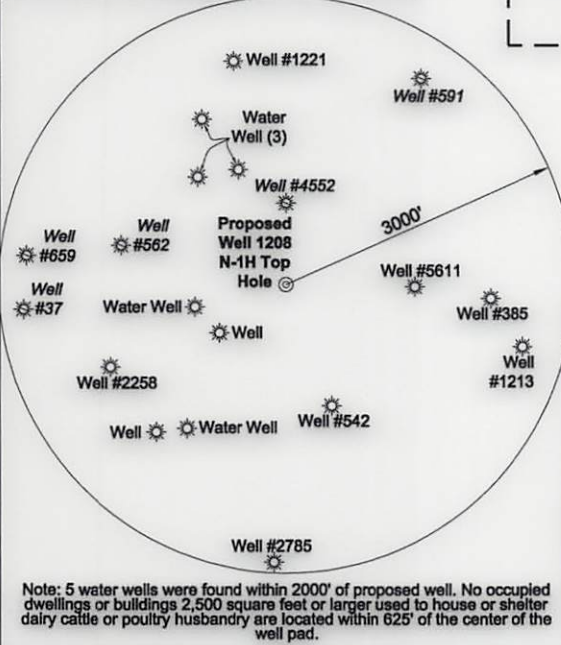
LONGITUDE 80 - 25 - 00  
4,901' to Top Hole  
8,222' to Bottom Hole

Tag	Bearing	Dist.
L1	S 36°48' E	1,226.4'
L2	S 21°29' E	1,242.3'
L3	S 89°47' W	1,355.7'
L4	N 68°11' W	1,178.0'
L5	S 88°38' W	1,737.2'

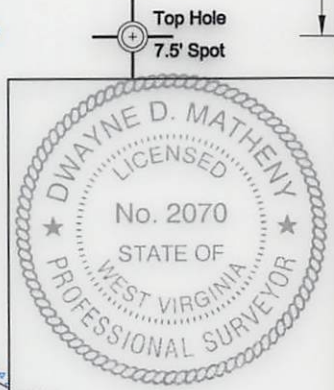


Notes:  
Well No. 1208 N-1H  
UTM NAD 1983 (USSF)  
Top Hole Coordinates  
N: 14,218,955.94' E: 1,803,601.67'  
Landing Point Coordinates  
N: 14,218,914.39' E: 1,801,864.93'  
Bottom Hole Coordinates  
N: 14,230,768.05' E: 1,797,676.27'

Notes: Well No. 1208 N-1H  
West Virginia Coordinate System of 1927, South Zone  
based upon Differential GPS Measurements.  
Top Hole coordinates Bottom Hole coordinates  
Latitude: 39°09'11.55" Latitude: 39°11'08.71"  
Longitude: 80°25'28.34" Longitude: 80°26'42.66"  
UTM Zone 17, NAD 1983  
Top Hole Coordinates Bottom Hole Coordinates  
N: 4,333,946.438m N: 4,337,546.777m  
E: 549,738.887m E: 547,932.823m  
Plat orientation and corner and well references  
are based upon the grid north meridian.  
Well location references are based upon the magnetic  
meridian.



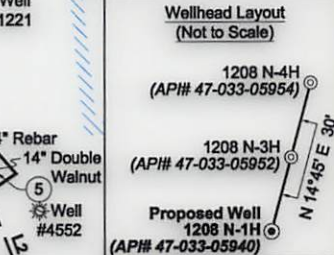
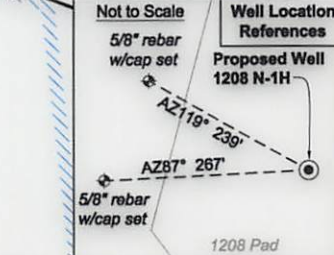
Note: 5 water wells were found within 2000' of proposed well. No occupied dwellings or buildings 2,500 square feet or larger used to house or shelter dairy cattle or poultry husbandry are located within 625' of the center of the well pad.



SEAL

**Legend**

- ⊙ Proposed gas well
- ⊕ Well Reference, as noted
- ⊛ Monument, as noted
- ⊙ Existing Well, as noted
- ⊙ Existing Plugged Well, as noted
- ⊙ Digitized Well, as noted
- Creek or Drain
- Existing Road
- Surface boundary (approx.)
- Interior surface tracts (approx.)



FILE NO: 195-36-G-18  
DRAWING NO: 1208 N-1H Well Plat  
SCALE: 1" = 1500'  
MINIMUM DEGREE OF ACCURACY: Submeter  
PROVEN SOURCE OF ELEVATION: CORS, Bridgeport, WV

STATE OF WEST VIRGINIA  
DEPARTMENT OF ENVIRONMENTAL PROTECTION  
OIL AND GAS DIVISION

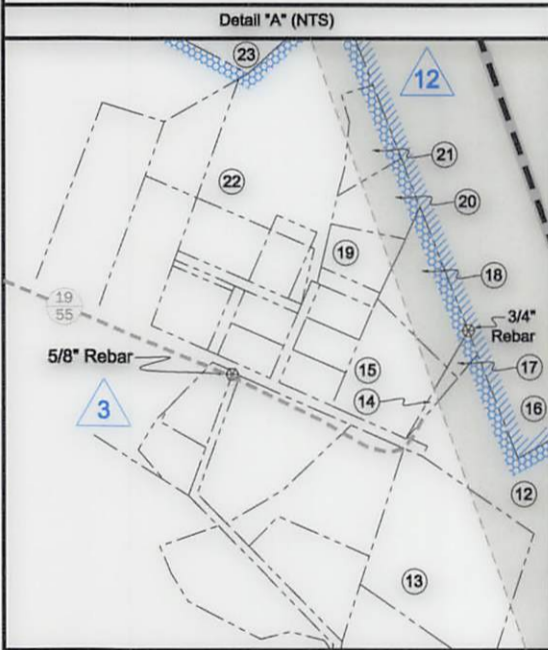
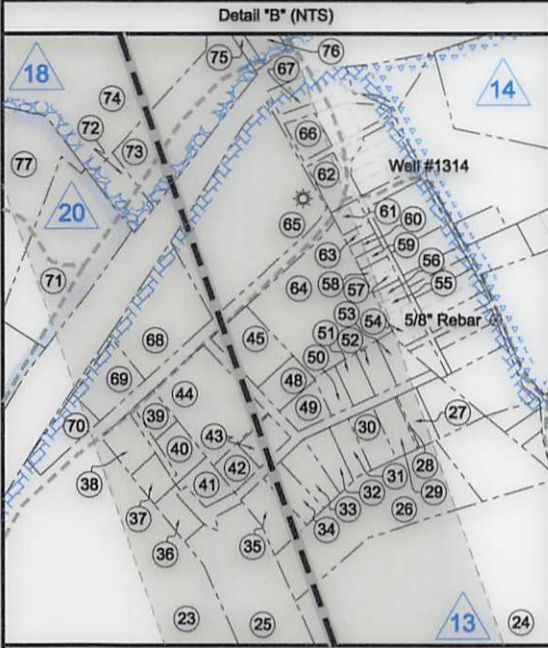
DATE: September 20 20 19  
OPERATOR'S WELL NO. 1208 N-1H  
API WELL NO MOD  
47 - 033 - 05940  
STATE COUNTY PERMIT

WELL TYPE:  OIL  GAS  LIQUID INJECTION  WASTE DISPOSAL  
(IF GAS) PRODUCTION:  STORAGE  DEEP  SHALLOW

LOCATION: ELEVATION: 1,147' WATERSHED: Middle West Fork Creek QUADRANGLE: West Milford  
DISTRICT: Grant / Union COUNTY: Harrison  
SURFACE OWNER: Linda & William W. Brodwater III ACREAGE: 200  
ROYALTY OWNER: Leeman B. Maxwell Heirs, et al LEASE NO: ACREAGE: 247.84  
PROPOSED WORK:  DRILL  CONVERT  DRILL DEEPER  FRACTURE OR STIMULATE  PLUG OFF OLD FORMATION  
 PERFORATE NEW FORMATION  OTHER PHYSICAL CHANGE IN WELL (SPECIFY) LP & BH MOD  
 PLUG AND ABANDON  CLEAN OUT AND REPLUG TARGET FORMATION: Marcellus Shale ESTIMATED DEPTH: 20,352' MD 7,050' TVD

WELL OPERATOR: HG Energy II Appalachia, LLC DESIGNATED AGENT: Diane C. White  
ADDRESS: 5260 Dupont Road ADDRESS: 5260 Dupont Road  
Parkersburg, WV 26101 Parkersburg, WV 26101

ID	Lease	ID	Lease
1	Jerome B. Gusman	16	Howard W. Vanscoy, et al
2	Leeman B. Maxwell Heirs	18	George W. Washburn, et al
3	William Burnside, et al	19	Lloyd Washburn, et al
4	Orie Myers, et al	20	William Burnside
5	Claudia Hacker, et al	21	Olga E. Washburn, et ux
6	Leeman B. Maxwell Heirs	21.2	HG Energy II 108
10	Rebecca D. Reed, et al	21.3	HG Energy II 109
11	David Scott, et al	21.4	HG Energy II 110
12	Nathan Post, et al	22	J.P. Post & C.F. Post
13	William Burnside, et al	23	Fee
14	Joseph Cheuvront, et al		



No.	TM / Par	Owner	Bk / Pg	Ac.
76	404 / 48	Trustees of Bethel Methodist Church	649 / 350	0.46
75	404 / 55.7	Bethel ME Church	1191 / 266	0.21
74	404 / 55.1	Terence L. Washburn	1332 / 1140	42.37
73	404 / 55.12	Bethel ME Church	1191 / 266	2.47
72	404 / 55.13	Terence Washburn	1322 / 1140	0.496
71	404 / 49	William M. McDonald	1387 / 584	2.75
70	424 / 7.1	Rennard D. & Gladis G. Rinehart	1367 / 1158	0.52
69	424 / 7	Ronnie & Sandy Cochran	1394 / 185	0.65
68	424 / 8	Carl D. & Joyce E. Ward	1227 / 767	1.56
67	2003 / 1	Donovan F. Randolph Estates, et al	W183 / 397	0.06
66	2003 / 2			0.84
65	404 / 50	Billy L. & Barbara E. Nutter	953 / 526	3.77
64	2003 / 66	William & Grace Preece	1061 / 1168	3.11
63	2003 / 15	UNKNOWN	- / -	Lot 20
62	2003 / 5			0.19
61	2003 / 12	Velma Steif, et al	F095 / 796	0.15
60	2003 / 17			Lot 22
59	2003 / 19			Lot 24
58	2003 / 21	Edra B. Cox	WB117 / 12	Lot 28
57	2003 / 23			Lot 28
56	2003 / 25			Lot 30
55	2003 / 27	Brian & Kell Rhoades	1522 / 736	Lot 32
54	2003 / 30			0.12
53	2003 / 63			0.31
52	2003 / 62			0.25
51	2003 / 61			0.24
50	2003 / 60	Nora Perrine	1165 / 171	0.23
49	2003 / 59	Roger & Diana Hurst	1165 / 165	0.30
48	2003 / 58	Donna Randolph	1004 / 948	0.34
47	404 / 8		1473 / 409	14.86
46	404 / 7	Mary Ann Tiano	932 / 456	142.74
45	2003 / 56	Melinda Bibbee	1498 / 951	0.71
44	2003 / 55	James S. Murphy	1563 / 672	2.06
43	2003 / 54	Glenn Kirkpatrick	1454 / 295	0.32
42	2003 / 54.1	Carl & Carolyn James	999 / 805	0.23
41	424 / 6.6	Palmer C. Dolph II	1331 / 1127	0.34
40	424 / 6.3	Kimberly Sue Smithson	1364 / 506	0.34
39	424 / 6.5	Dale R. Holden	1368 / 135	0.30
38	424 / 6.1	John L. Horner	1212 / 1094	1 Lot
37	424 / 6.4	Todd Joseph Brown	1223 / 658	0.26
36	424 / 6.2	Jason & Teresa Allen	1501 / 702	0.27
35	2003 / 53	George & Madge Hennen	1345 / 808	0.56
34	2003 / 52		995 / 738	0.34
33	2003 / 51	Heather J. & David L. Smallwood II	986 / 728	0.38
32	2003 / 50	Albert Buzzell	1408 / 638	0.33
31	2003 / 49	Kevin P. Barker	1295 / 507	0.30
30	2003 / 48	Howard D. & Judith J. Swick	1396 / 633	0.35
29	2003 / 47		1015 / 966	0.27
28	2003 / 46	Vivetta Carter	1167 / 874	p/o Lot L
27	2003 / 46.1	Christan & Katherine Meeker	1340 / 747	0.27
26	2003 / 65	Wendy G. Richards	1537 / 523	2.96
25	424 / 6.7	Joseph H. Mason & Decire Mason Brown	1444 / 1175	3.18
24	424 / 10	Joseph H. Mason	WB119 / 1137	22.25
23	424 / 5	Joe & Karen Gonzalez	WB 87 / 514	41.13
22	424 / 53	Scott Louk	1067 / 1095	6.04
21	424 / 55	James & Rhonda Kirby	1378 / 139	0.874
20	424 / 55.3	Amber Brooke Gaines	1494 / 524	1.00
19	424 / 55.2	Ovid & Joy Belt	1548 / 73	0.808
18	424 / 29.1	John & Paula Zirkle	1225 / 257	1.569
17	424 / 29	Gregory Gail Burnside	1323 / 665	0.15
16	424 / 13	Ovid & Joy Belt	1326 / 146	34.60
15	424 / 28	John & Paula Zirkle	1183 / 224	1.905
14	424 / 28.1	John & Paula Zirkle	1323 / 665	0.13
13	424 / 30	John & Paula Zirkle	1323 / 670	5.00
12	424 / 30.1	Robert J. Brightbill	1323 / 665	45.62
11	424 / 52.3	Gary S. & Melinda M. Brodwater	1560 / 293	4.54
10	425 / 31.3	Robert J. Brightbill	1354 / 175	2.00
9	424 / 52.1	David Keesucker	1560 / 293	139.98
8	424 / 52.2	Bernice A. Keesucker	1533 / 1283	2.38
7	424 / 52	Dona R. & David R. Scarff	1186 / 552	2.17
6	425 / 31.1	Linda & William W. Brodwater III	1360 / 652	1.00
5	425 / 31.2		1343 / 1279	1.16
4	445 / 1		- / -	87.78
3	445 / 10	Lisa M. Nutter	WB 687 /	66.87
2	445 / 2		445	84.57
1	425 / 31	Linda & William W. Brodwater III	1410 / 1045	247.84

FILE NO: 195-36-G-18  
DRAWING NO: 1208 N-1H Well Plat  
SCALE: 1" = 1500'  
MINIMUM DEGREE OF ACCURACY: Submeter  
PROVEN SOURCE OF ELEVATION: CORS, Bridgeport, WV

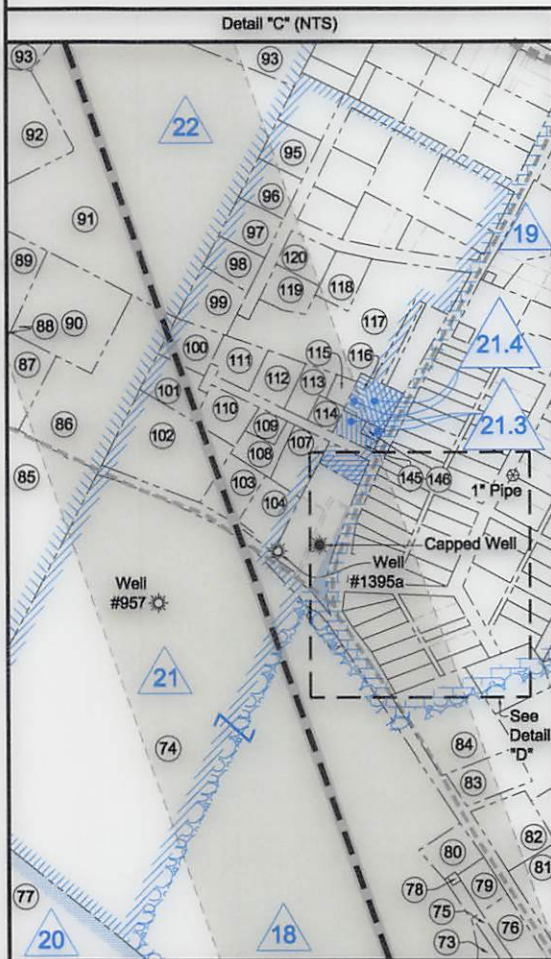
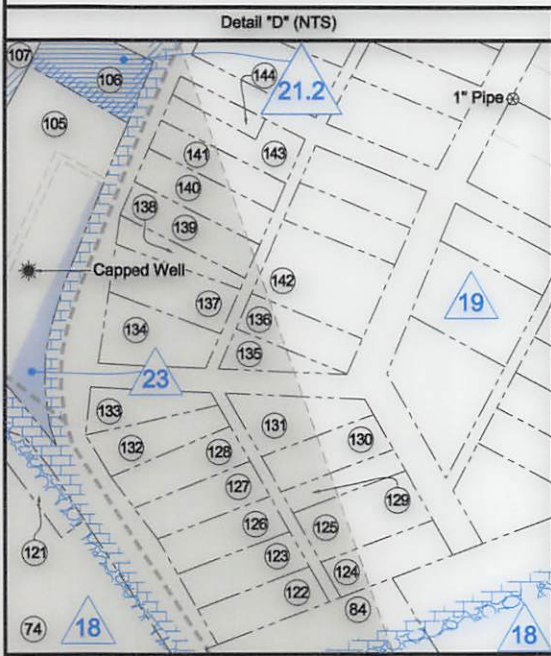
**STATE OF WEST VIRGINIA**  
DEPARTMENT OF ENVIRONMENTAL PROTECTION  
**OIL AND GAS DIVISION**

DATE: September 20 20 19  
OPERATOR'S WELL NO. 1208 N-1H  
API WELL NO MOD  
47 - 033 - 05940  
STATE COUNTY PERMIT

WELL TYPE:  OIL  GAS  LIQUID INJECTION  WASTE DISPOSAL  
(IF GAS) PRODUCTION:  STORAGE  DEEP  SHALLOW

LOCATION: ELEVATION: 1,147' WATERSHED: Middle West Fork Creek QUADRANGLE: West Milford  
DISTRICT: Grant / Union COUNTY: Harrison  
SURFACE OWNER: Linda & William W. Brodwater III ACREAGE: 200  
ROYALTY OWNER: Leeman B. Maxwell Heirs, et al LEASE NO: ACREAGE: 247.84  
PROPOSED WORK:  DRILL  CONVERT  DRILL DEEPER  FRACTURE OR STIMULATE  PLUG OFF OLD FORMATION  
 PERFORATE NEW FORMATION  OTHER PHYSICAL CHANGE IN WELL (SPECIFY) LP & BH MOD 7,050' TVD  
 PLUG AND ABANDON  CLEAN OUT AND REPLUG TARGET FORMATION: Marcellus Shale ESTIMATED DEPTH: 20,352' MD

WELL OPERATOR: HG Energy II Appalachia, LLC DESIGNATED AGENT: Diane C. White  
ADDRESS: 5260 Dupont Road ADDRESS: 5260 Dupont Road  
Parkersburg, WV 26101 Parkersburg, WV 26101



No.	TM / Par	Owner	Bk / Pg	Ac.	
148	424 / 11.1	Eric A. & Aiana N. Burnside	1385 / 1089	13.92	
147	424 / 31	Chris & Misty Montgomery	1449 / 358	15.30	
146	2901 / 9	Trustees of Jackson Lodge 35	360 / 11	0.07	
145	2901 / 8		809 / 27	0.16	
144	2901 / 89.1		Oscar Lee Rhodes	1231 / 1177	0.07
143	2901 / 89	Robert & Martha Allaman	1208 / 964	0.17	
142	2901 / 117	Jon S. Skinner, et al	WB185/401	0.344	
141	2901 / 88	Sherron K. McKinney & Frankie Snyder	1297 / 539	0.15	
140	2901 / 87			0.18	
139	2901 / 86			0.12	
138	2901 / 85			0.22	
137	2901 / 84			0.172	
136	2901 / 115	John & Dreama Homer	1267 / 953	0.102	
135	2901 / 114	Ronzel C. Sandra K. Richards	1077 / 1129	-	
134	2901 / 83			0.165	
133	2901 / 82			0.191	
132	2901 / 81			0.22	
131	2901 / 113	Gary Michael Ward & Eugene B. Ward Jr.	WB139 / 736	0.17	
130	2901 / 112			0.10	
129	2901 / 111			0.172	
128	2901 / 80	Robert D. Wilt	1114 / 601	0.172	
127	2901 / 79			0.172	
126	2901 / 78			0.172	
125	2901 / 110			1351 / 1030	0.241
124	2901 / 109			0.172	
123	2901 / 77	Jason & Rebecca Riggleman	1242 / 968	0.172	
122	2901 / 76	0.172			
121	404 / 45	Melvin & Mary E. James	1064 / 131	0.13	
120	2901 / 212	Andrew & Denise Bellerose	1558 / 989	0.41	
119	2901 / 219.1	Warren E. Davis	1594 / 739	0.40	
118	2901 / 216	Christopher & Rachel Hurst	1329 / 972	0.43	
117	2901 / 219	Sharon M. Johnson, Trustee of Oleta M. Post Irrev. Trust	1576 / 818	19.00	
116	2901 / 10	June D. Courtney	1116 / 412	0.57	
115	2901 / 200.1	William & June Courtney	1274 / 979	0.13	
114	2901 / 199	Trustees of Jackson Lodge 35	1044 / 1036	0.172	
113	2901 / 200	Beverly K. Rinehart	1274 / 1176	0.45	
112	2901 / 204	Joyce A. Pristavec	1123 / 628	0.430	
111	2901 / 203	Randall R. & Debra L. Stover	1132 / 76	0.387	
110	2901 / 196	Eugene R. & Lisa D. Messer	1246 / 593	0.51	
109	2901 / 201	Judith Ann Carlin	1314 / 338	0.51	
108	2901 / 201.1	Ronzel C. & Sandra K. Richards	1340 / 856	0.35	
107	2901 / 198	Doyle L. & Rebecca J. Puckett	1461 / 916	0.50	
106	2901 / 7	Robert J. Hitt & Amanda Jo Hitt	1594 / 742	0.26	
105	2901 / 3	Wilann Arlene Bise 99% Int. & Rebecca Jane Puckett 1% Int.	1437 / 432	1.50	
104	2901 / 195	Jennifer L. & David K. Downward	1410 / 140	0.56	
103	2901 / 195.1	Ronzel C. & Sandra K. Richards	1282 / 548	0.55	
102	2901 / 194	Frank R. & Shelby J. Costello	1374 / 207	1.75	
101	2901 / 202	Kenneth R. & Helen M. Queen	1486 / 488	0.56	
100	2901 / 197	Brian & Karrell A. Vernon	1226 / 350	0.53	
99	2901 / 219.2	Ryan & Sara Armstone	1402 / 803	1.19	
98	2901 / 217	Edward & Loretta McElwee	1217 / 292	0.50	
97	2901 / 208	James & Mogan Williams	1512 / 262	0.50	
96	2901 / 207	Sandra K. & Ersel E. Mogan Jr.	1332 / 1114	0.49	
95	2901 / 206	Thomas & Kristie Wardelle	1542 / 351	0.48	
94	404 / 32.4	Post Heritage, LLC	1399 / 155	10.43	
93	404 / 32.5	Richard P. & Carol L. Rapping	1399 / 71	12.70	
92	404 / 33	William F. & Catherine A. Rapping	1399 / 87	14.74	
91	404 / 32.9	Patricia R. & William T. Douglass	1399 / 93	11.90	
90	404 / 33.6	Kenneth R. & Helen M. Queen	1292 / 1071	1.84	
89	404 / 33.4	Marsha Romine	1333 / 190	1.82	
88	404 / 33.3		1333 / 192	0.305	
87	404 / 33.1	Lisa A. Moore	1369 / 1030	1.10	
86	404 / 33.2	Richard E. Lawrence	1016 / 123	1.68	
85	404 / 43	Perry L. & Deborah J. Post	1329 / 346	96.12	
84	404 / 46	Annette C. Nichols	1370 / 901	1.68	
83	404 / 55.6	Brian W. Myers	1439 / 1139	0.63	
82	404 / 55.5	Jackson Lodge 35 A.F. & A.M.	342 / 378	0.75	
81	404 / 52			2.90	
80	404 / 55.2	Michael J. & Sandra R. Bode	1022 / 193	0.51	
79	404 / 47	Bethel ME Church	828 / 539	0.31	
78	404 / 55.8	Grant Union PSD	1164 / 949	0.02	
77	424 / 2	William Michael McDonald	1387 / 583	293.21	

FILE NO: 195-36-G-18  
DRAWING NO: 1208 N-1H Well Plat  
SCALE: 1" = 1500'  
MINIMUM DEGREE OF ACCURACY: Submeter  
PROVEN SOURCE OF ELEVATION: CORS, Bridgeport, WV

STATE OF WEST VIRGINIA  
DEPARTMENT OF ENVIRONMENTAL PROTECTION  
OIL AND GAS DIVISION

DATE: September 20 20 19  
OPERATOR'S WELL NO. 1208 N-1H  
API WELL NO MOD  
47 - 033 - 05940  
STATE COUNTY PERMIT

WELL TYPE:  OIL  GAS  LIQUID INJECTION  WASTE DISPOSAL  
(IF GAS) PRODUCTION:  STORAGE  DEEP  SHALLOW

LOCATION: ELEVATION: 1,147' WATERSHED: Middle West Fork Creek QUADRANGLE: West Milford  
DISTRICT: Grant / Union COUNTY: Harrison  
SURFACE OWNER: Linda & William W. Brodwater III ACREAGE: 200  
ROYALTY OWNER: Leeman B. Maxwell Heirs, et al LEASE NO: ACREAGE: 247.84  
PROPOSED WORK:  DRILL  CONVERT  DRILL DEEPER  FRACTURE OR STIMULATE  PLUG OFF OLD FORMATION  
 PERFORATE NEW FORMATION  OTHER PHYSICAL CHANGE IN WELL (SPECIFY) LP & BH MOD 7,050' TVD  
 PLUG AND ABANDON  CLEAN OUT AND REPLUG TARGET FORMATION: Marcellus Shale ESTIMATED DEPTH: 20,352' MD

WELL OPERATOR: HG Energy II Appalachia, LLC DESIGNATED AGENT: Diane C. White  
ADDRESS: 5260 Dupont Road ADDRESS: 5260 Dupont Road  
Parkersburg, WV 26101 Parkersburg, WV 26101