

LATITUDE

39° 15' 00"



0.332
0.73w

80° 30' 00"

LONGITUDE

7'5 OGIS topo location

7.5' loc _____ 15' loc _____
(calc.) _____

Company South Penn Oil Co.

Farm L. A. Myers #1

Quad Big Isaac 7 1/2

County Harrison

District Ten Mile

WELL LOCATION MAP

File No. 033-30241

L. A. MYERS NO. 1 WELL.

No. 209 O.F.-Harrison.

Shaws Run

Ten Mile District, Harrison County, W. Va.

241A

By South Penn Oil Co., Chamber of Commerce Bldg., Pittsburgh, Pa.

On 79 acres, surface and mineral rights owned by James E. Myers,

R. F. D. No. 1, Wolf Summit, W. Va.

Elevation, 1161.15' L.

10" casing, 450'; 8 $\frac{1}{4}$ "², 1026'; 6-5/8", 1778'; 5-3/16", 1875'.

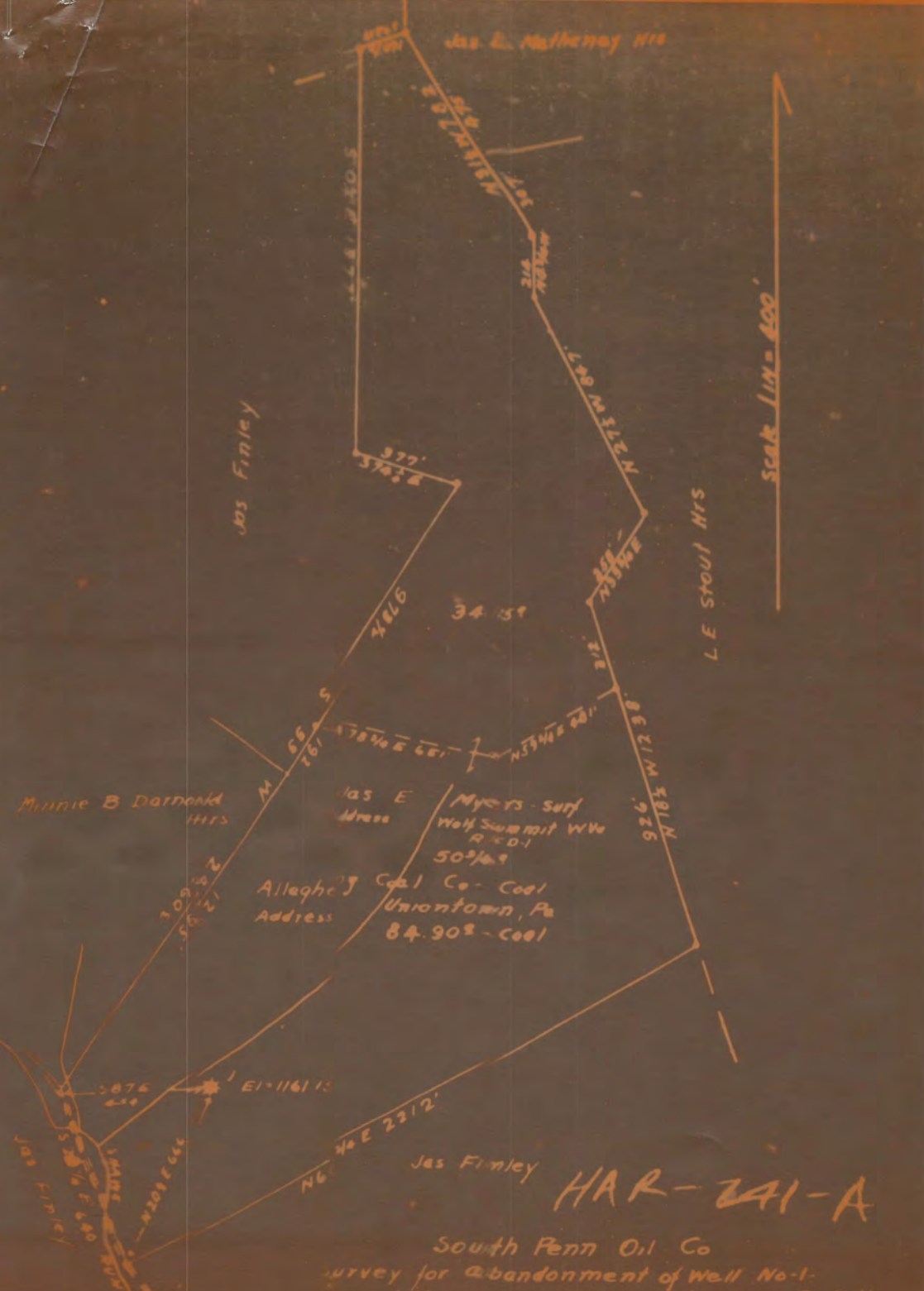
Coal was encountered at 430-436'.

Abandonment reported to Dept. of Mines April 11, 1935.

NOTE: Salt Sand not shown on our well record.

Oil well.

	Top.	Bottom.
Pittsburgh Coal	430	- 436
Maxton Sand	1700	- 1740
Big Injun Sand	1861	- 1900
Fifty-foot Sand	2315	- 2338
Stray Sand	2445	- 2510
Gordon Sand	2520	- 2568
Fifth Sand (oil, 2755')	2749	
Total depth		2772



Jas. E. Malherney HTS

Mrs. Finley

L.E. Stout HTS

Scale 1 in = 400'

Minnie B Darmond HTS

Jas E
Address

Myers - Surf
Wolf Summit WW
R & D-1
50-1/4

Allegheny
Address

Coal Co - Coal
Uniontown, Pa
84.90% - Coal

Jas Finley

HAR-241-A

South Penn Oil Co

Survey for abandonment of Well No-1.
Jas A Myers - Top Mile Dist. Harrison Co W.Va.