

LATITUDE 39° 17' 30"

LONGITUDE 80° 51' 00"



1.43W
2.01W

7'5 OGIS topo location

7.5' loc _____ 15' loc _____
(calc.) _____

Company HNB Co (6896)

Farm J. P. Stanton

Quad Clarksburg 7 1/2

County Harrison

District Clark

WELL LOCATION MAP

File No. 033-30279

279A

Clark District, Harrison County, W. Va.
 Hope Natural Gas Co., 445 W. Main St., Clarksburg, W. Va.
 On 53.36 acres, surface and mineral rights owned by John Stanton,
 Annmoore, W. Va.

Elevation, 1200' L.

8 $\frac{1}{4}$ " casing, 950'.

Starts below coal (Pittsburgh).

Abandonment reported to Dept. of Mines Nov. 14, 1935.

Well was shot at 2455'.

Fresh water at 65'; salt water at 790'.

Gas well.

	Top.	Bottom.
Lime (water, 65')	60	- 85
Sand	190	- 210
Sand	260	- 275
Sand	390	- 410
Sand	450	- 475
Gas Sand	650	- 690
Salt Sand (water, 790')	760	- 820
Sand	950	- 1080
Big Lime	1430	- 1497
Big Injun Sand	1497	- 1600
50-Ft. Sand	1950	- 1975
Sand (gas, 2348') 4 th ?	2346	- 2354
Fifth Sand (gas, 2455')	2450	
Total depth		2521

Map of FIELD NO. 6550 4705

HOPE NATURAL GAS CO.

JNO. STANTON 5388 & HENRY M. ASH

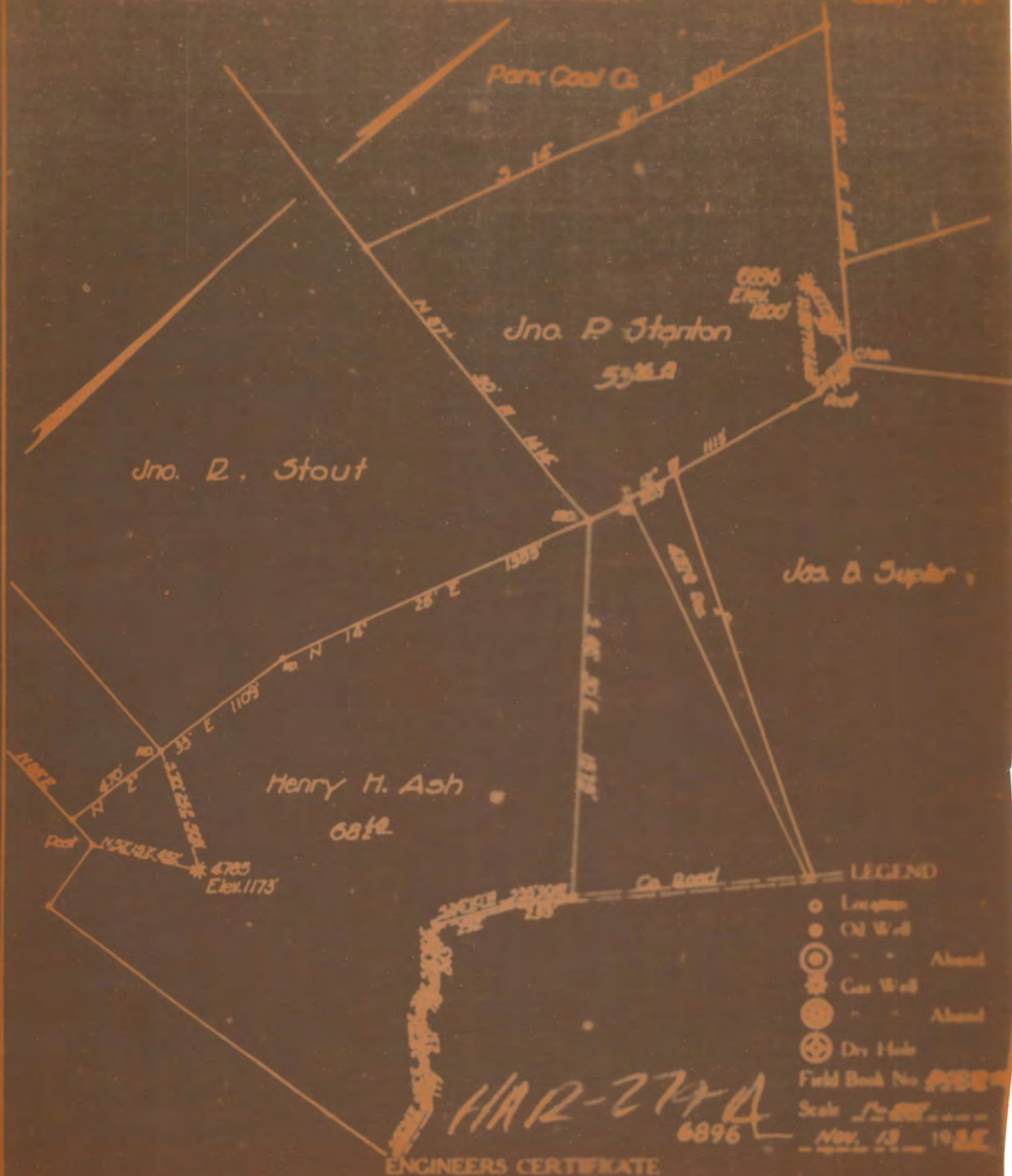
CLARK SIMPSON

District MARRIAGE

Clatsburg, W. Va., on the

Farm consisting of _____ Acres

County, W. Va.



HAR-277-A
6896

ENGINEERS CERTIFICATE

I, the undersigned, hereby certify that this map is correct and shows all the information to the best of my knowledge and belief, required by the oil and gas section of the mining laws of West Virginia.