

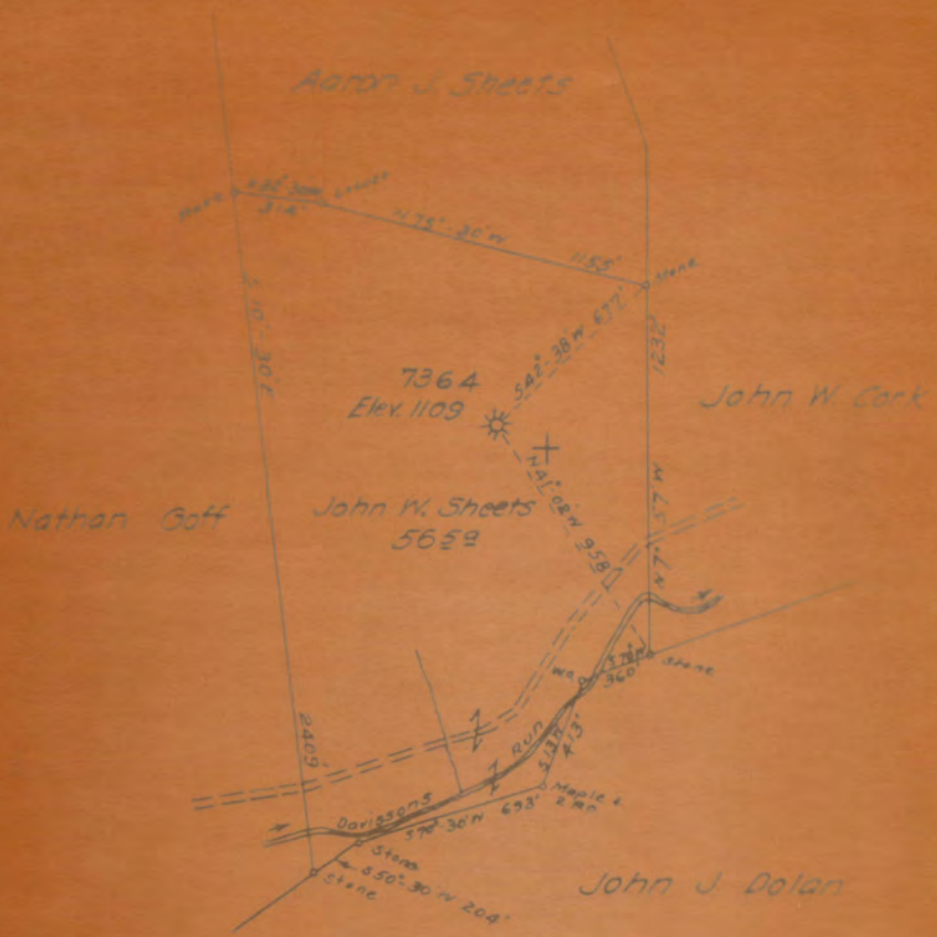
296A

6384

Clark District, Harrison County, W. Va.
 By Hope Natural Gas Co., 445 W. Main St., Clarksburg, W. Va.
 On 43 acres, surface and mineral rights owned by J. W. Sheets,
 R. F. D., Clarksburg, W. Va.

Elevation, 1109' L.
 10" casing, 390' (pulled); 8 1/4", 1000'; 6-5/8", 1346'; 2" tubing, 3014'.
 Starts below coal (Pittsburgh).
 Abandonment reported to Dept. of Mines April 30, 1936.
 Well was not shot.
 Fresh water at 360'; salt water at 800'.
 Gas well; now exhausted.

	Top.	Bottom.	Thickness.
Little Dunkard Sand (water, 360')	340	- 370	30
Big Dunkard Sand	435	- 480	45
Salt Sand (water, 800')	670		
Second Salt Sand		1000	
Maxton Sand	1220	- 1260	40
Big Lime	1330	- 1390	60
Big Injun Sand	1390	- 1492	102
Fifty-foot Sand	1789	- 1840	51
Thirty-foot Sand (gas, 1882')	1871	- 2000	129
Gordon Stray Sand	2120	- 2164	44
Gordon Sand	2170	- 2189	19
Fourth Sand	2221	- 2233	12
Fifth Sand (gas, 2305')	2302	- 2318	16
Speechley Sand (gas, 2980-2995')	2987	- 2999	12
Total depth		3011	



Company HOPE NATURAL GAS CO.
 Address CLARKSBURG W. VA.
 Farm JOHN W. SHEETS
 Tract Area 43 Lease No 44541
 Well (Farm) No. 7364 Ser. No. 7364
 Municipality CLARKSBURG

STATE OF WEST VIRGINIA
 DEPARTMENT OF MINES
 OIL AND GAS DIVISION
 CHARLESTON
 WELL LOCATION MAP
 FILE NO. HAR - 295