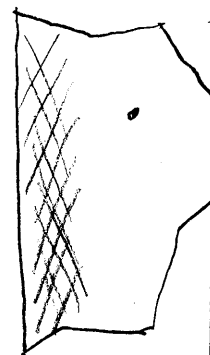


LATITUDE 39° 22' 30"

80° 30' 00"



LONGITUDE

7'5 OGIS topo location

7.5' loc _____ 15' loc _____
(calc.) _____

Company F. G. Bish

Farm J. Q. Bremer #1

Quad Salem 7 1/2

County Harrison

District Sardis

WELL LOCATION MAP

File No. 033 - 30313

1904
Sardis District, Harrison County, W. Va. 313-19

By F. G. Bish, Clarksburg, W. Va.

On 129 acres, surface owned by J. Q. Bramer, Wallace, W. Va.;
owner of mineral rights, unknown.

Elevation, 1080' L.

10" casing, 335' (pulled); 8 $\frac{1}{2}$ " , 1308' (pulled); 6-5/8" , 2090'.

Coal was encountered at 820'.

5-3/16" liner from bottom of Injun Sand to top of Gordon (2210').
top at

~~Abandonment~~ reported to Dept. of Mines June 18, 1936. ?

Oil well.

	Top.	Bottom.
Pittsburgh Coal		820
Little Dunkard Sand	1152	- 1350
Salt Sand	1730	- 1890
Big Lime	2082	- 2120
Big Injun Sand	2120	- 2222
Gordon Sand (oil, 2920-3')	2906	- 2923
Total depth		2942

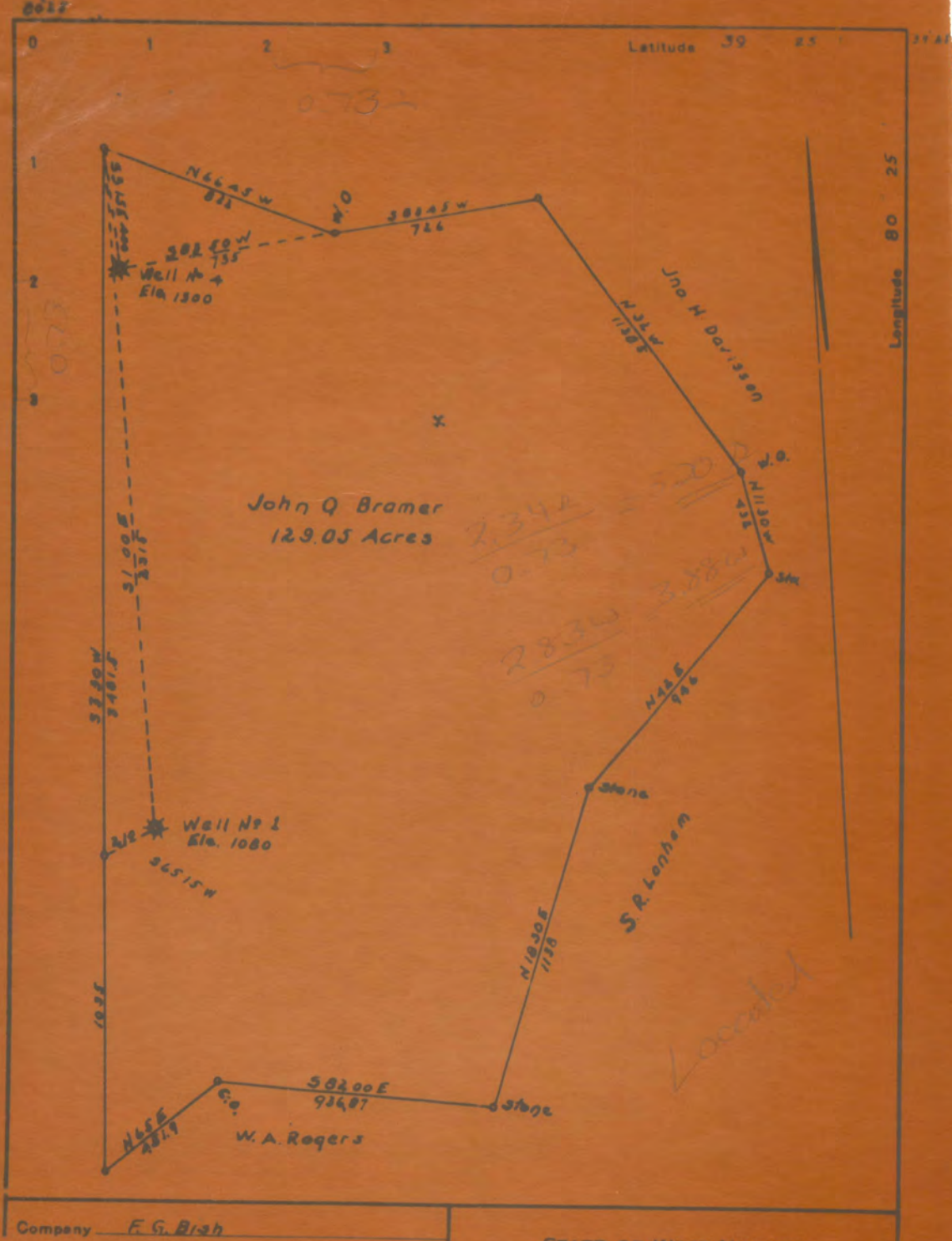


Company F. G. Bush
 Address Clarksburg
 Farm John Q. Bromer
 Tract _____ Acres 129 Lease No. 1
 Well (Farm) No. 1 Serial No. _____
 Elevation (Bench Level) 1080
 Quadrangle Clarksburg
 County Marshall District Saluda
 Engineer W.A. Rogers County Surveyor

STATE OF WEST VIRGINIA
 DEPARTMENT OF MINES
 OIL AND GAS DIVISION
 CHARLESTON

WELL LOCATION MAP
FILE NO. MAR - 313

* Denotes location of well on United States
 Topographic Maps, scale 1 to 62,500, lat-
 itude and longitude lines being represented
 by dotted lines as shown.

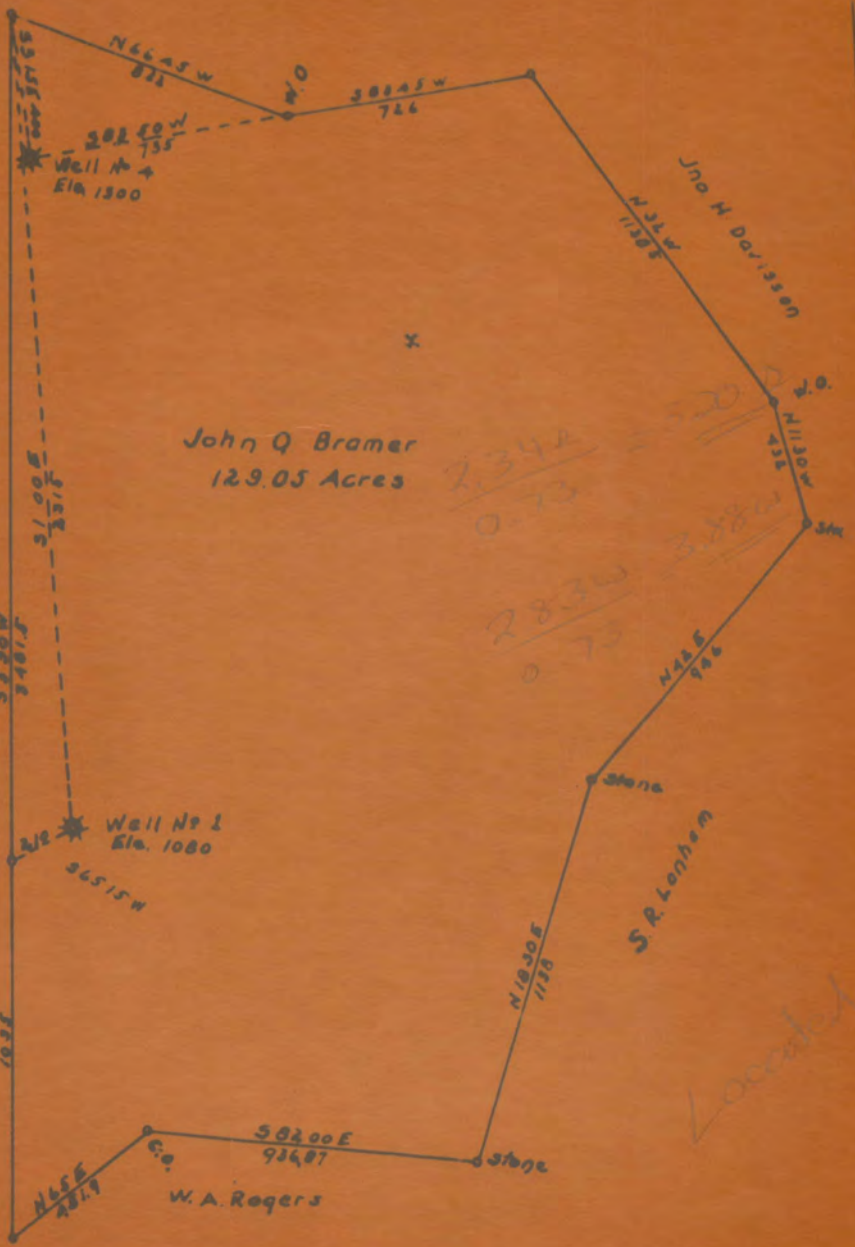


073

073

Latitude 39 25

Longitude 80 25



John Q Bramer
12.9.05 Acres

Locality