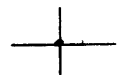


LATITUDE 39° 12' 30"

80° 22' 30"



LONGITUDE

1.21 A
0.15 W

7'5 OGIS topo location

7.5' loc _____ 15' loc _____
_____ (calc.) _____

elev 1302' TD 2469'

Company Philadelphia O.I. Co

Farm W.B. Van Horn (4926)

Quad West Milford 7'12

County Harrison

District Grant

WELL LOCATION MAP

File No. 033-30322

Har -322-A

Grant District, Harrison County, W. Va.
 By Philadelphia Oil Co., Clarksburg, W. Va.
 On 260 acres; Map Ref., Weston N.W.2-4; surface and minerals owned
 by Paul V. Bond, Lost Creek, W. Va.

Drilled prior to permit.

Elevation, 1309' L.

10" casing, 210'; 6 $\frac{5}{8}$ " hole, 1698'.

Coal was encountered at 146-150'.

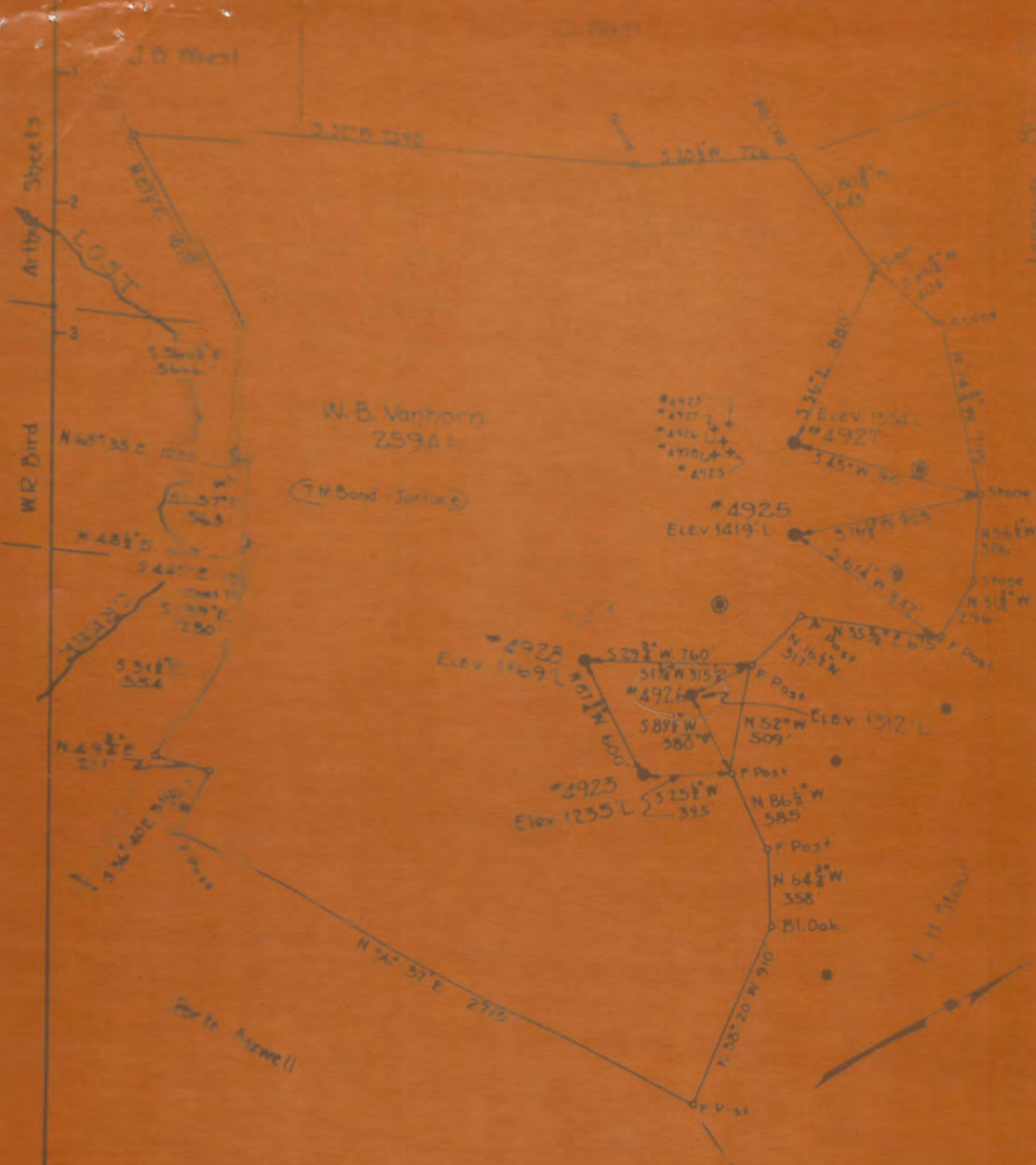
Well purchased from Eastern Oil Co. 2-1-1926.

Oil well. 6 $\frac{5}{8}$ " hole.

Abandonment reported to Dept. of Mines May 1, 1936.

Record to RCT from D. G. Courtney (Dept. of Mines) 5-5-37.

	Top.	Bottom.	Thickness.
Unrecorded	0	- 146	146
Pittsburgh Coal	146	- 150	4
Unrecorded	150	- 386	236
Little Dunkard Sand	386	- 403	17
Unrecorded	403	- 553	150
Big Dunkard Sand	553	- 570	17
Unrecorded	570	- 680	110
Gas Sand	680	- 754	74
Unrecorded	754	- 822	68
1st Salt Sand	822	- 880	58
Unrecorded	880	- 932	52
2nd Salt Sand	932	- 1100	168
Unrecorded	1100	- 1593	493
Little Lime	1593	- 1609	16
Pencil Cave	1609	- 1628	19
Big Lime	1628	- 1683	55
Big Injun Sand	1683	- 1819	136
Unrecorded	1819	- 2020	201
Gantz? Sand	2020	- 2068	48
Unrecorded	2068	- 2148	80
50-Ft. Sand	2148	- 2202	54
Unrecorded	2202	- 2215	13
30-Ft. Sand	2215	- 2235	20
Unrecorded	2235	- 2401	166
Gordon Stray Sand	2401	- 2418	17
Unrecorded	2418	- 2434	16
Gordon Sand (oil, 2459-61')	2434	-	35
Total depth			2469



LOCATION - WELLS # 4926 # 4927 # 4928 TO BE ABANDONED

Company	PHILADELPHIA OIL CO.	
Address	UNION MILK BLDG CLARKSBURG, W. VA.	
Farm	W. B. VANHORN	
Treat	2502	Lease No. 93
Well Form	2502-1	Serial No. 4926, 4927, 4928
Creation	1912	1912

STATE OF WEST VIRGINIA
 DEPARTMENT OF MINES
 OIL AND GAS DIVISION
 CHARLESTON

WELL LOCATION MAP
 FILE NO. HAR. 327