

LATITUDE 39° 12' 30"

0.5/A  
0.01W

LONGITUDE 80° 22' 30"

7'5 OGIS topo location

7.5' loc \_\_\_\_\_ 15' loc \_\_\_\_\_  
(calc.) \_\_\_\_\_

Company Philadelphia Co.

Farm G. L. Louther  
(6072)

Quad West Milford 7 1/2

County Harrison

District Union

WELL LOCATION MAP

File No. 033 - 30326

Union District, Harrison County, W. Va.

326-A

By Philadelphia Oil Co., Clarksburg, W. Va.

On 56 acres, Map Ref., Weston N.W. 2-4, surface owned by Mrs. O. E.

Williams, West Milford, W. Va., and minerals by Ralph Moore et al.,

Tucson, Arizona.

Well was completed April 14, 1920.

Elevation, 1120' L.

10" casing, 164'; 8 $\frac{1}{4}$ " , 1000'; 6 $\frac{5}{8}$ " , 1524'.

No coal was encountered.

Abandonment reported to Dept. of Mines April 17 and 24, 1936.

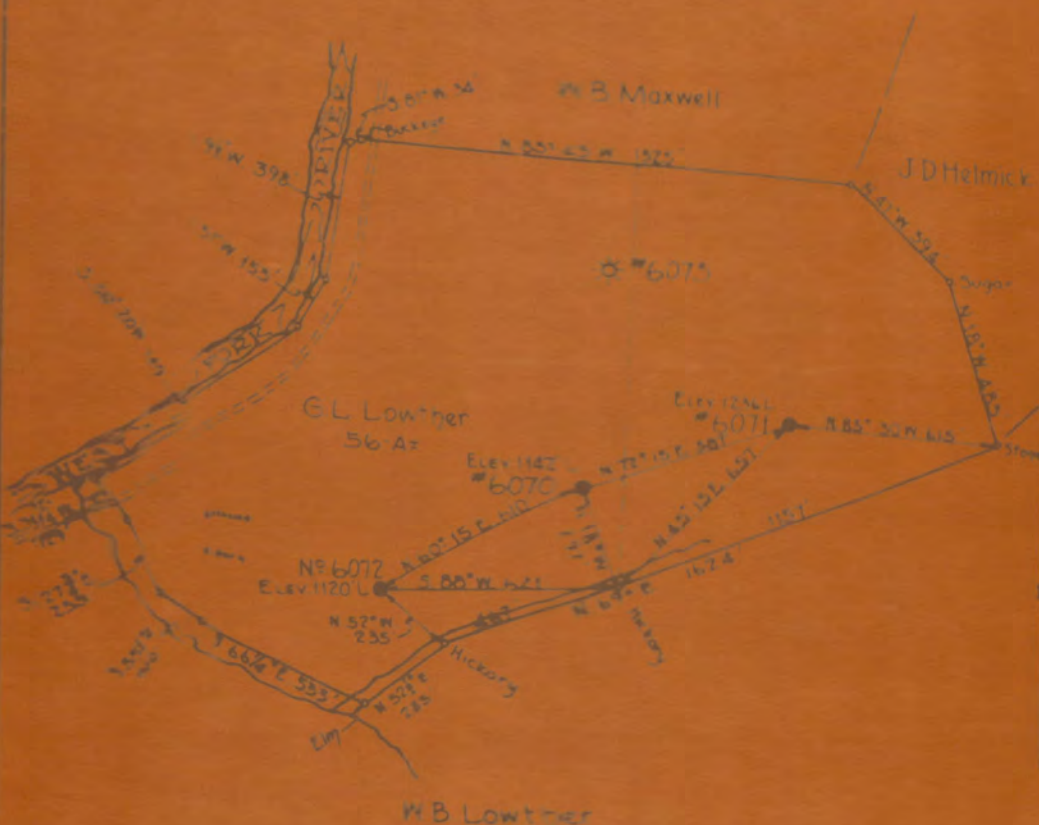
Purchased from Joseph Berger.

Well was shot at 2275', with 30 qts.

Oil well. 6 $\frac{5}{8}$ " hole.

Record to RCT from D. G. Courtney (Dept. of Mines) 5-5-37.

	Top.	Bottom.	Thickness.
Unrecorded	0	- 100	100
Slate	100	- 150	50
Lime	150	- 300	150
Slate	300	- 350	50
Lime	350	- 480	130
Gas Sand	480	- 525	45
Slate	525	- 645	120
1st Salt Sand	645	- 688	43
Slate	688	- 700	12
2nd Salt Sand	700	- 870	170
Slate	870	- 895	25
3rd Salt Sand	895	- 960	65
Slate	960	- 1090	130
Sand	1090	- 1120	30
Slate	1120	- 1185	65
Maxton Sand	1185	- 1210	25
Red rock	1210	- 1410	200
Little Lime	1410	- 1420	10
Pencil Cave	1420	- 1453	33
Big Lime	1453	- 1510	57
Big Injun Sand	1510	- 1630	120
Slate	1630	- 1645	15
Squaw Sand	1645	- 1728	83
Slate	1728	- 1800	72
Berea Grit?	1800	- 1845	45
Slate	1845	- 1860	15
Gantz? Sand	1860	- 1935	75
Slate	1935	- 1968	33
50-Ft. Sand	1968	- 2033	65
Slate	2033	- 2058	25
30-Ft. Sand	2058	- 2091	33
Red rock	2091	- 2115	24
Sand	2115	- 2135	20
Red rock	2135	- 2225	90
Stray Sand	2225	- 2254	29
Slate	2254	- 2257	3
Gordon Sand (oil, 2261-69')	2257	- ....	28
Total depth			2285



LOCATION: WELL # 6072 TO BE ABANDONED

Company ADDELPHIA OIL CO.  
 Address BANK BLDG CLARKSBURG WVA  
 Firm ATHER  
 Tract 56-A Lease No 152  
 Well Name Serial No 6072  
 Section SECTION N.W. 24  
 County WASON  
 State OK

STATE OF WEST VIRGINIA  
 DEPARTMENT OF MINES  
 OIL AND GAS DIVISION  
 CHARLESTON

WELL LOCATION MAP  
 FILE NO. WAR-125

© Certified location of well by United States  
 Geological Survey