

LATITUDE 39°20'00"

LONGITUDE 80°25'30"



2.39d  
2.06w

7'5 OGIS topo location

7.5' loc \_\_\_\_\_ 15' loc \_\_\_\_\_  
(calc.) \_\_\_\_\_

Company Independent Oil Co

Farm Jeremiah Dakon # 11

Quad Wolf Summit 7'2

County Harrison

District Ten mile

WELL LOCATION MAP

File No. 033-30328

328-A

2910  
Ten Mile District, Harrison County, W. Va.

By Israel H. Beren, Marietta, Ohio. (324 Second St.)

On 170 acres, surface owned by Jeremiah G. Dakon Heirs, R. D. 2,  
Bristol, W. Va., and mineral rights by J. V. Thompson Estate,  
Uniontown, Pa.

Drilled by Independent Oil Co.

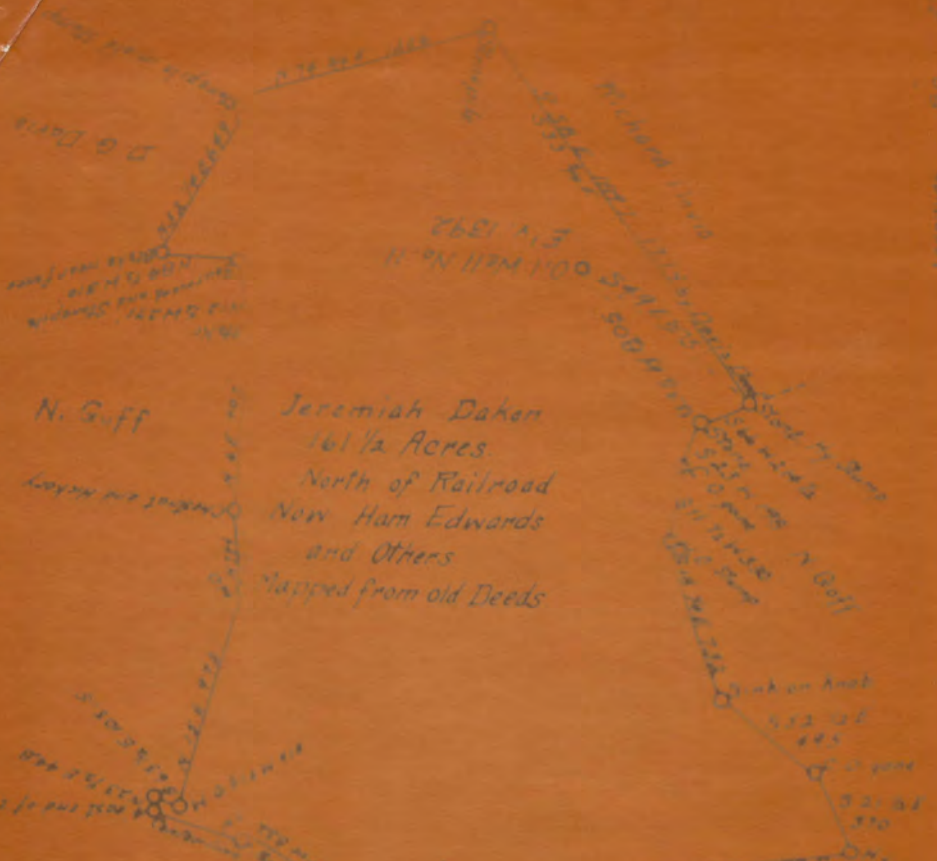
Elevation, 1392'.

16" conductor, 16'; 10" casing, 160' (pulled); 8½", 1300' (pulled);  
6-5/8" 2191'; 2" tubing, 2885'.

Coal was encountered at 752-754 and 785-792'.

Abandonment reported to Dept. of Mines July 21, 1936.

	Top.	Bottom.	Thickness.
Conductor	0	9	9
Red rock, lime, and slate	9	785	776
Pittsburgh Coal	785	792	7
Lime, slate, red rock, and shells	792	1300	508
Big Dunkard Sand	1300	1330	30
Lime, slate, and shells	1330	1700	370
Salt Sand	1700	1860	160
Slate	1860	1880	20
Lime	1880	1900	20
Slate	1900	1920	20
Lime	1920	1930	10
Slate and shells	1930	2010	80
Lime	2010	2090	80
Slate	2090	2096	6
Big Lime	2096	2186	90
Big Injun Sand	2186	2270	84
Red rock	2270	2280	10
Slate	2280	2290	10
Lime	2290	2490	200
Slate	2490	2515	25
Lime	2515	2530	15
Slate	2530	2560	30
Lime	2560	2635	75
Slate and shells	2635	2666	31
Thirty-foot Sand	2666	2700	34
Slate and shells	2700	2740	40
Lime	2740	2790	50
Fifty-foot Sand	2790	2820	30
Slate and shells	2820	2841	21
Stray Sand	2841	2855	14
Gordon Sand (first pay, 2855-2863'; top second pay, 2863-2868'; bottom second pay, 2868-2870')	2855	2875	20
Lime	2875	2879	4
4th Sand	2879		
Total depth		2885	



N. Giff

Jeremiah Dakan  
16 1/2 Acres  
North of Railroad  
Now Ham Edwards  
and Others  
Mapped from old Deeds

Engineer's Certificate

I, the undersigned, hereby certify the information to the best of my knowledge and belief as to the location and gas section of the well.

to the best of my knowledge and belief

and well required by the oil and gas laws of West Virginia  
C. C. Fitts  
Engineer

Acknowledged before me a Notary Public of Harrison County on the 21<sup>st</sup> day of July 1936.

Notary Public of Harrison County on the 21<sup>st</sup> day of July 1936

W. B. M. Gouge  
Notary Public

My commission expires the 21<sup>st</sup> day of Feb 1944

the 21<sup>st</sup> day of Feb 1944

Company Independent Oil Company  
Address Clackaburg, West Virginia  
Farm Jeremiah Dakan, part of R.R.  
Tract \_\_\_\_\_ Acres 16 1/2  
Well Form No. 11  
Quarterly Clackaburg  
County Harrison

STATE OF WEST VIRGINIA  
DEPARTMENT OF MINES  
OIL AND GAS DIVISION  
CHARLESTON

WELL LOCATION MAP  
FILE NO. B.A.2-328