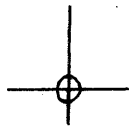


LATITUDE 39' 17' 30"

08' 23" 08 LONGITUDE



1.75
1.56w

7'5 OGIS topo location

7.5' loc _____

15' loc _____
(calc.) _____

Company _____

Farm J. Moses BRAD

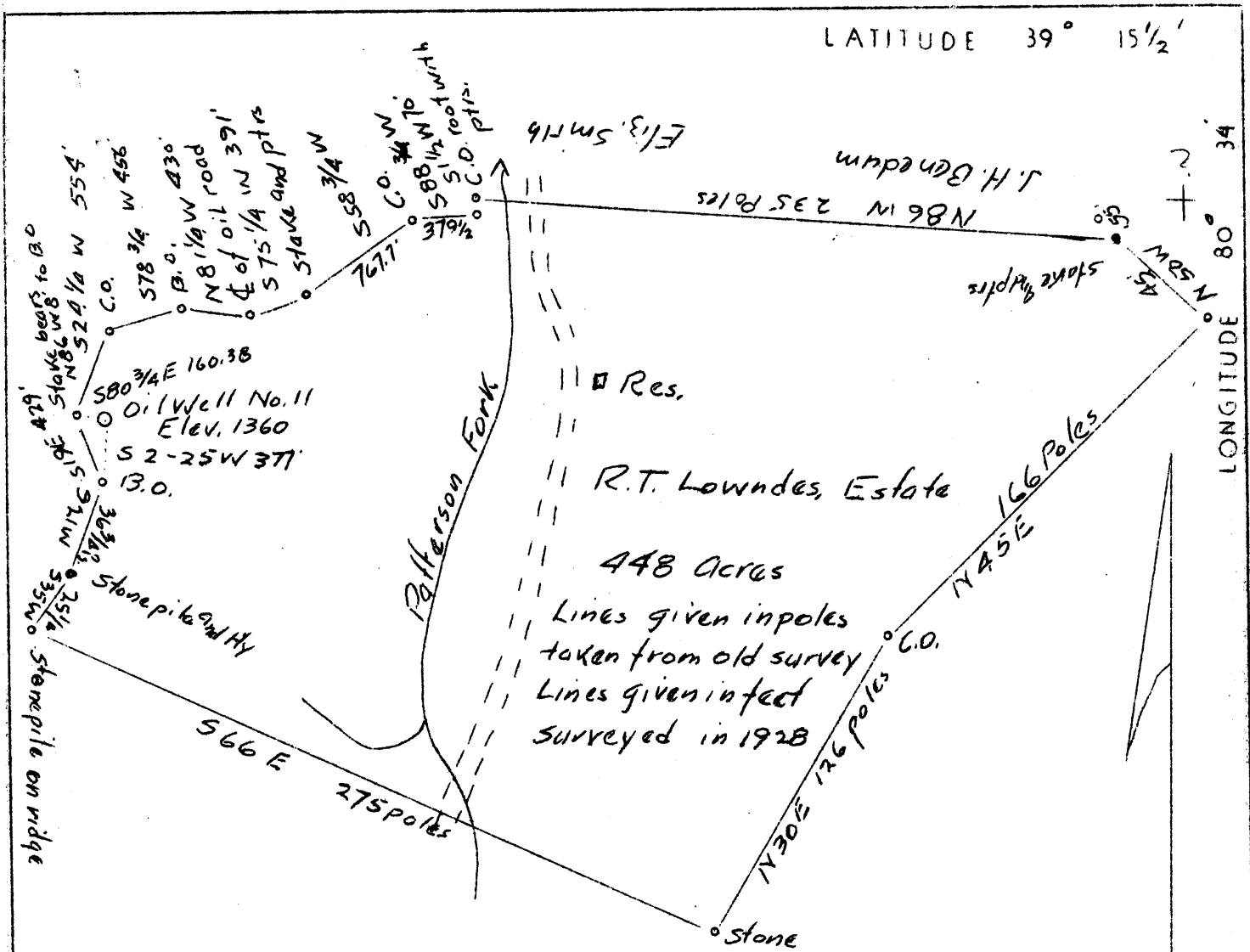
Quad Salem

County Harrison

District Ten mile

WELL LOCATION MAP

File No. HAR-357A



Engineer's Certificate

I, the undersigned, hereby certify that this map is correct and shows all of the information to the best of my knowledge and belief, required by the oil and gas section of the mining laws of West Virginia.

C. C. Fittro
Engineer.

Acknowledged before me, a Notary Public of Harrison County, this the 16th day of September, 1936.

Clara D. Duthie
Notary Public.

1.175
O.36W

My commission expires on the 30th day of April, 1941.

? Low

Company	Raad and Moses	3178
Address	Salem, West Virginia	
Farm	R. T. Lowndes, Estate	
Tract	Acres 448	Lease No.
Well (Farm) No. 11	Serial No.	
Quadrangle	Centerpoint	
County	Harrison	
District	Tenmile	
Engineer	C. C. Fittro	
Engineer's Registration No.		
File No.	Drawing No.	
Date	9/16/36	Scale 60 poles - 1"

STATE OF WEST VIRGINIA
Department of Mines
OIL AND GAS DIVISION
Charleston

WELL LOCATION MAP

File No. HAR-357 a

+ Denotes location of well on U. S. Topographic Maps, scale 1 to 62,500 latitude and longitude lines being represented by border lines as shown.

- Denotes one inch spaces on border line of original tracing.