

LATITUDE 39° 17' 30"



0.86A  
0.90W

80° 32' 30"  
LONGITUDE

7.5 OGIS topo location

7.5' loc \_\_\_\_\_ 15' loc \_\_\_\_\_  
(calc.) \_\_\_\_\_

Company Road + Moses

Farm Samuel Gain

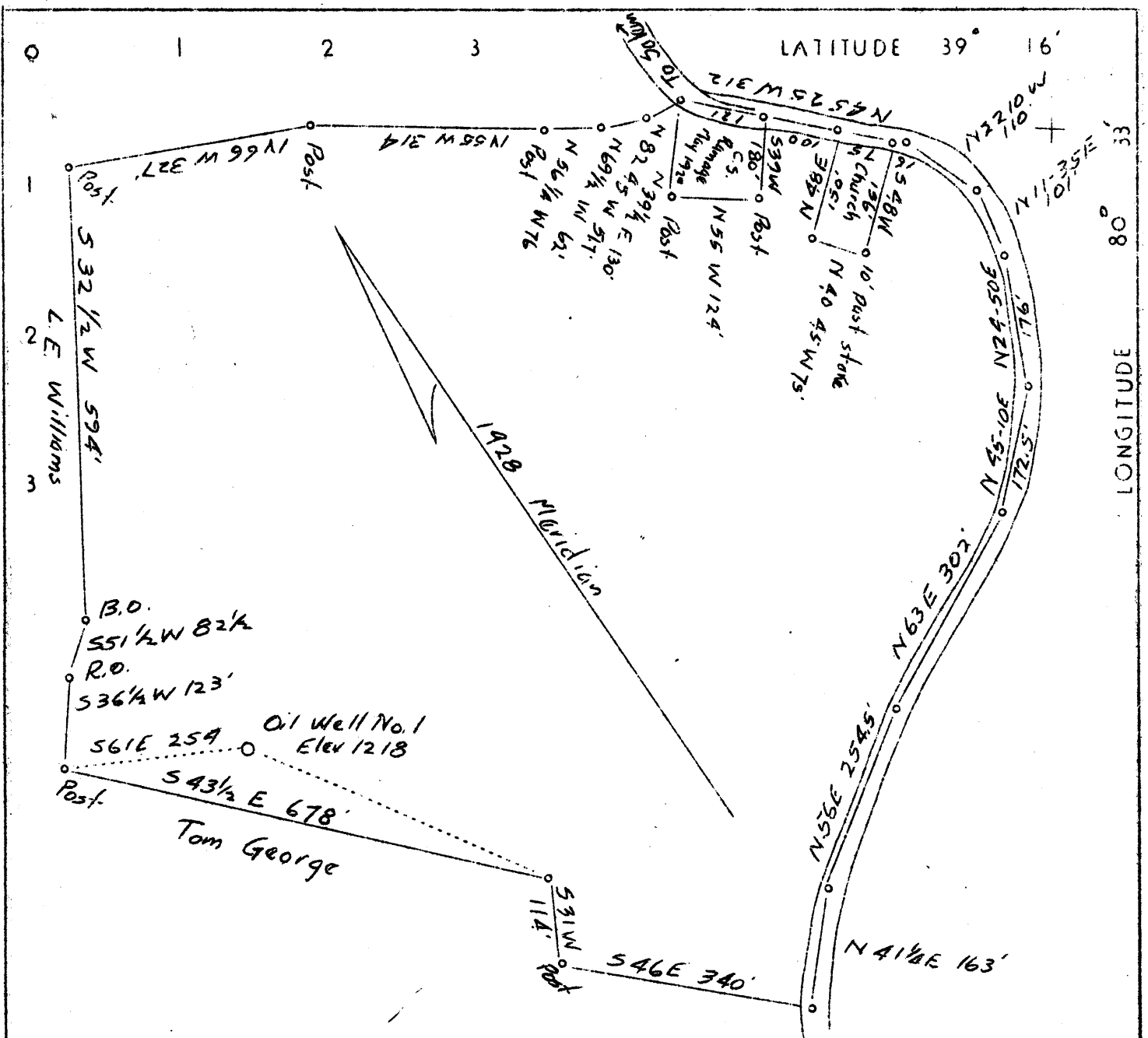
Quad Salem

County Harrison

District Tennile

WELL LOCATION MAP

File No. HAR: - 358 A



Engineer's Certificate

I, the undersigned, hereby certify that this map is correct and shows all of the information to the best of my knowledge and belief, required by the oil and gas section of the mining laws of West Virginia.

C. C. Fittro  
Engineer.

Acknowledged before me, a Notary Public, of Harrison County, this the 16th day of September 1936.

Clara D. Duthie  
Notary Public.

My commission expires on the 30th day of April, 1941.

0.78S  
? 0.56W

Company	Raad and Moses	3178
Address	Saem, West Virginia	
Farm	Samuel Gain	
Tract	Acres 26.6	Lease No.
Well (Farm) No.	1	Serial No.
Quadrangle	Centerpoint	
County	Harrison	
District	Tennile	
Engineer	C. C. Fittro	
Engineer's Registration No.		
File No.	Drawing No.	
Date	9/16/36	Scale 200' - 1'

STATE OF WEST VIRGINIA  
Department of Mines  
OIL AND GAS DIVISION  
Charleston

WELL LOCATION MAP

File No HAR-358A

+ Denotes location of well on U. S. Topographic Maps, scale 1 to 62,500 latitude and longitude lines being represented by border lines as shown.

- Denotes one inch spaces on border line of original tracing.