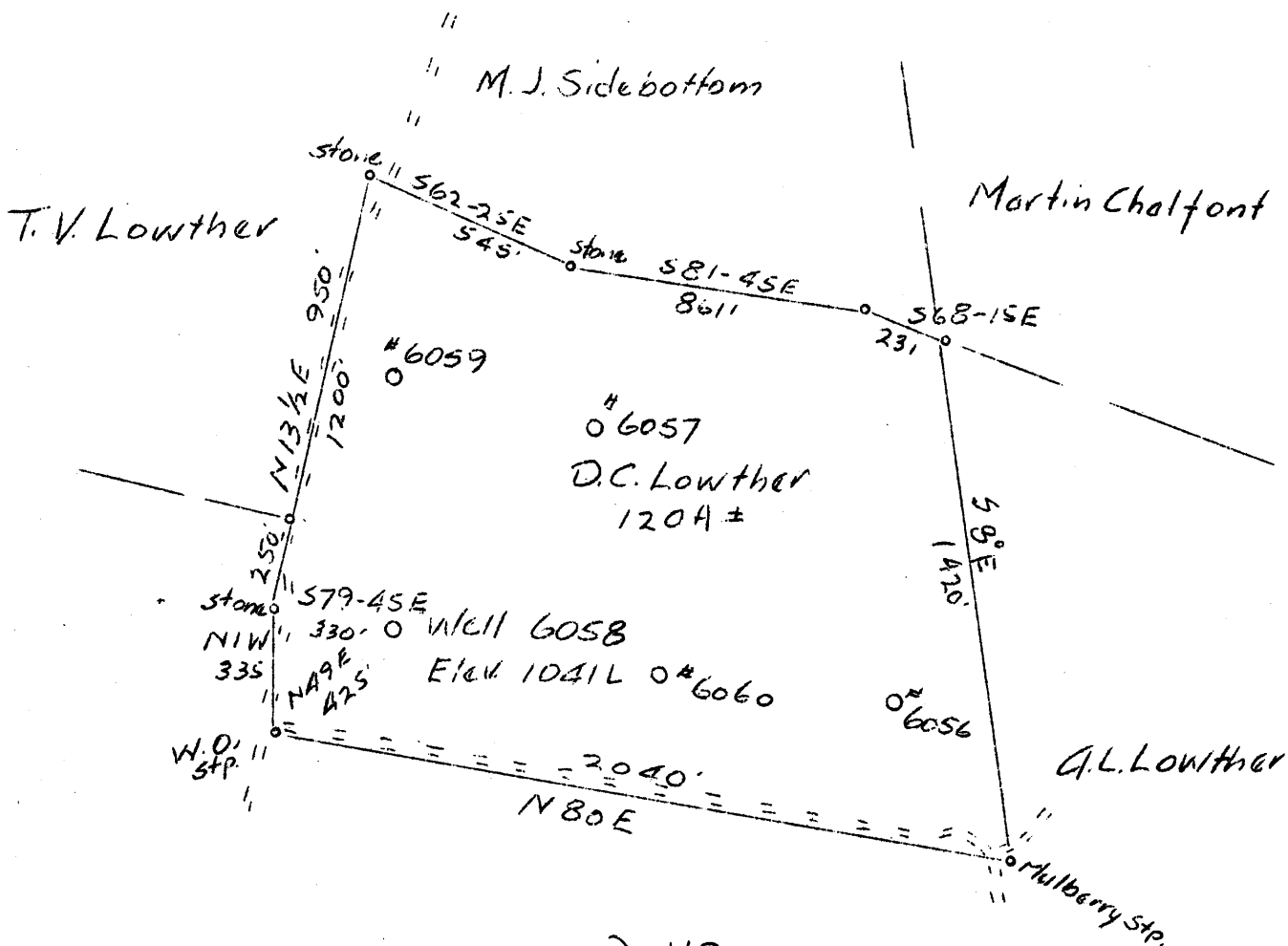


LATITUDE 39° 15'

LONGITUDE 80° 20'



W.B. Maxwell

2.48S  
2.37W

2.4 N  
2.5 S

Well #6058 To be abandoned

Company Philadelphia Oil Co. 0130  
 Address Union Bank Bldg. Clarksburg, W. Va.  
 Farm D. C. Lowther  
 Tract \_\_\_\_\_ Acres 120 Lease No. 124  
 Well (Farm) No. 1 Serial No. 6058  
 Quadrangle Weston N.W. 2 (YC) 7  
 County Harrison  
 District Union  
 Engineer F. E. Bingham  
 Engineer's Registration No. 764  
 File No. \_\_\_\_\_ Drawing No. \_\_\_\_\_  
 Date May 1, 1932 Scale 1"=50'

STATE OF WEST VIRGINIA  
 Department of Mines  
 OIL AND GAS DIVISION  
 CHARLESTON

WELL LOCATION MAP  
 File No. HAR-364A

+ Denotes location of well on U. S. Topographic Maps, scale 1" to 62,500, latitude and longitude lines being represented by border lines as shown.  
 - Denotes one inch spaces on border line of original tracing.

0130  
 Union District, Harrison County, W. Va. 364-A  
 By Philadelphia Oil Co., Clarksburg, W. Va.  
 On 120 acres, Map Ref., Weston N.W.2-4; surface owned by J. D. Helmick,  
 Mt. Clare, W. Va., and minerals by A. L. Lowther, 1805 Seventh St.,  
 Parkersburg, W. Va.  
 Well completed May 9, 1915.  
 Elevation, 1041' L.  
 13" casing, 79'; 8 $\frac{1}{4}$ " , 902' (pulled); 6 $\frac{5}{8}$ " , 1429'.  
 Bottom hole packer, 8 $\frac{1}{4}$  x 6 $\frac{5}{8}$ , set at 1429'.  
 No coal was encountered.  
 Abandonment reported to Dept. of Mines April 17 and 24, 1936.  
 Located 2-23-1915; began drg. 3-24-1915; comp. drg. 5-9-1915.  
 Purchased from Hope Cons. & Ref. Co.  
 Well was shot at 2196', with 130 qts.  
 Salt water at 890 & 910'.  
 Oil well. 6 $\frac{5}{8}$ " hole.  
 Record to RCT from D. G. Courtney (Dept. of Mines) 5-5-37.

	Top.	Bottom.	Thickness.
Unrecorded	0	- 400	400
Little Dunkard Sand	400	- 440	40
Unrecorded	440	- 525	85
Big Dunkard Sand	525	- 550	25
Unrecorded	550	- 585	35
Gas Sand	585	- 620	35
Unrecorded	620	- 660	40
1st Salt Sand	660	- 792	132
Unrecorded	792	- 828	36
2nd Salt Sand (water, 880 and 910')	828	- 920	92
Unrecorded	920	- 1291	371
Maxton Sand (gas, 1306' and 1326')	1291	- 1331	40
Little Lime	1331	- 1338	7
Pencil Cave	1338	- 1358	20
Big Lime	1358	- 1409	51
Big Injun Sand (gas, 1505')	1409	- 1530	121
Unrecorded	1530	- 1575	45
Squaw Sand	1575	- 1630	55
Unrecorded	1630	- 1730	100
Berea Grit	1730	- 1760	30
Unrecorded	1760	- 1770	10
Gantz Sand	1770	- 1790	20
Unrecorded	1790	- 1875	85
50-Ft. Sand	1875	- 1920	45
Unrecorded	1920	- 1930	10
30-Ft. Sand	1930	- 1960	30
Unrecorded	1960	- 2172	212
Gordon Stray Sand	2172	- 2180	8
Unrecorded	2180	- 2184	4
Gordon Sand (oil, 2186-90')	2184	- ....	28
Total depth			2212