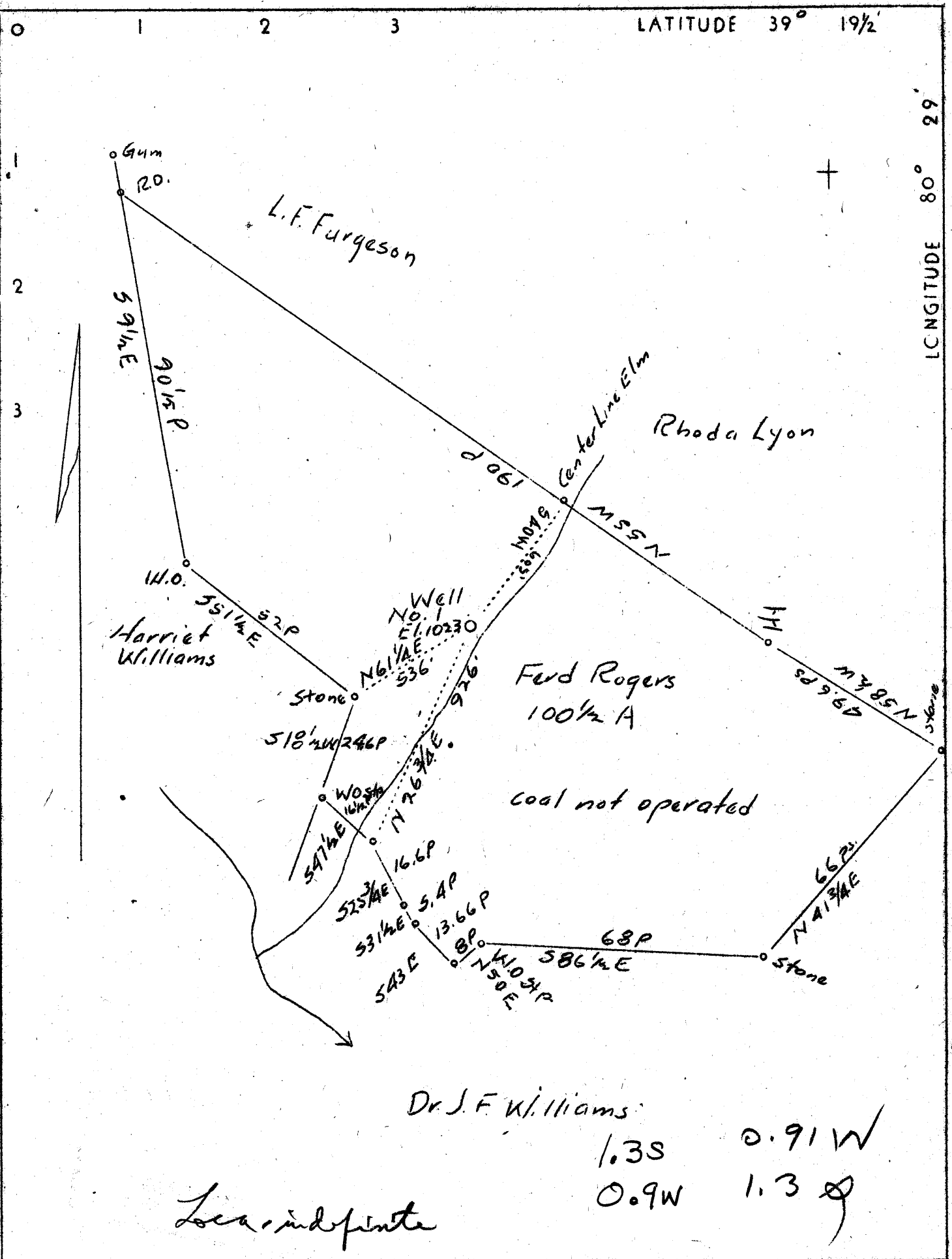




LATITUDE 39° 19 1/2'

LONGITUDE 80° 29'



Dr. J. F. Williams

1.3S      0.91 W  
 0.9W      1.3 S

Loca. indefinite

Company	Raad and Moses	3178
Address	Salem, W. Va.	
Farm	Ferd Rogers	
Tract	Acres 100 1/2	Lease No.
Well(Farm) No. 1	Serial No.	
Elevation (Spirit Level)	1023	
Quadrangle	Clarksburg	(SW)
County	Harrison	District Tenmile
Engineer	C. C. Fittro, C. E.	
Engineer's Registration No.	818	
File No.	XYZ	Drawing No. 75
Date	3-17-37	Scale 30 poles - 1 inch

STATE OF WEST VIRGINIA  
 Department of Mines  
 OIL AND GAS DIVISION  
 Charleston

WELL LOCATION MAP

File No. HAR-371A

+ Denotes location of well on U. S. Topographic Maps, scale 1 to 62,500 latitude and longitude lines being represented by border lines as shown.

— Denotes one inch spaces on border line of original tracing.