

39° 25'

LATITUDE

80° 20' 00"

1.32 S

0.88 W

LONGITUDE

7'5 OGIS topo location

7.5' loc 1.32 S 15' loc \_\_\_\_\_  
                  0.88 W (calc.) \_\_\_\_\_

Company \_\_\_\_\_

Farm G B Coffman 4 (5146)

Quad Shinnston (606)

County Harrison

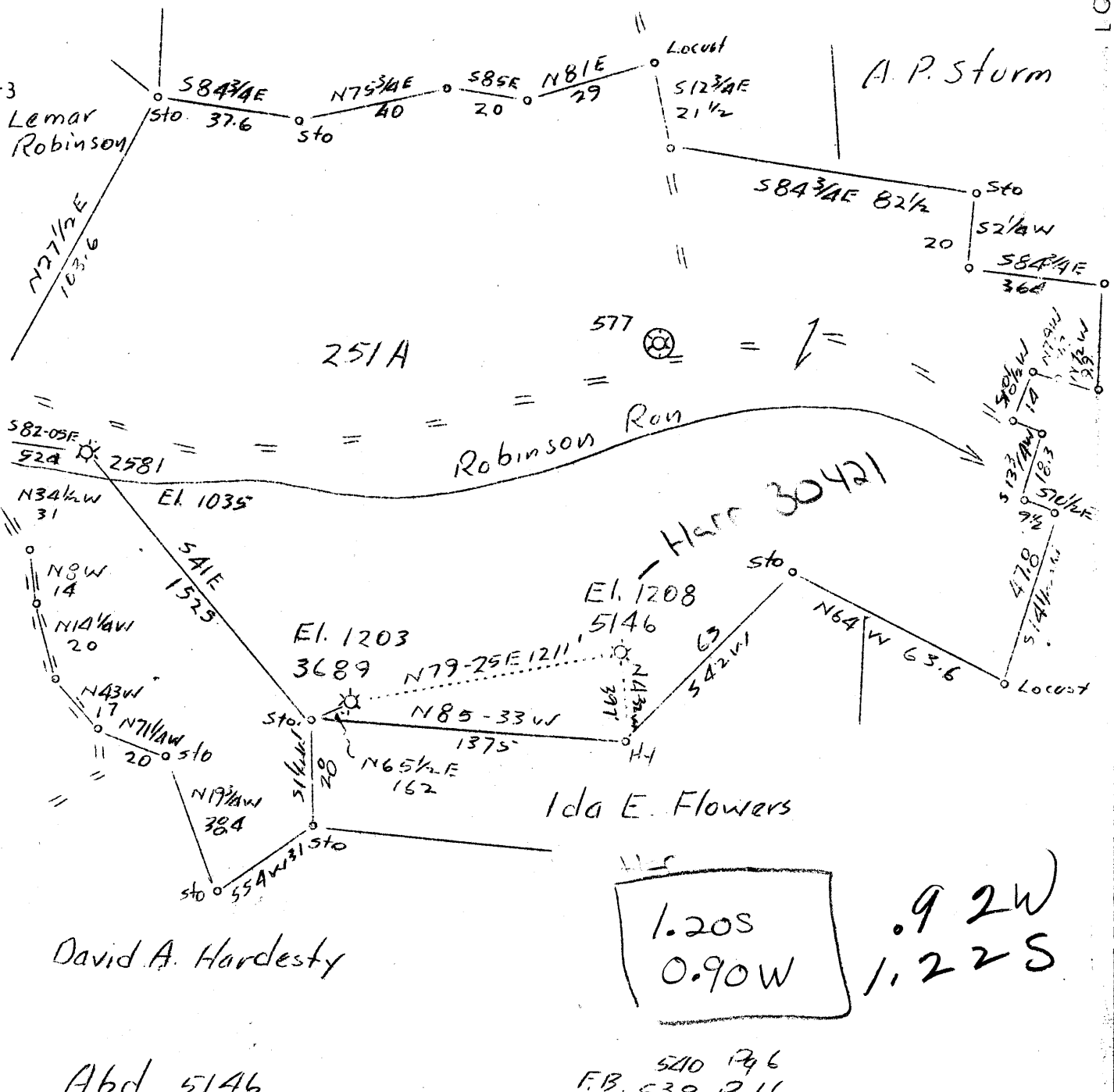
District \_\_\_\_\_

WELL LOCATION MAP

File No. Herr 30421

B.W. Herbert

A.P. Sturm



1.20S  
0.90W

0.92W  
1.22S

Abd 5146

520 1316  
F.B. 538 1316

Company	Hope Natural Gas Co. 0384
Address	Clarksburg, W.Va.
Farm	G.B. Coffman
Tract	1 Acres 252 Lease No. 14197
Well (Farm) No.	4 Serial No. 5146
Elevation (Spirit Level)	1035, 1203, 1208
Quadrangle	Clarksburg,
County	Harrison District Eagle
Engineer	W.M. Bowers
Engineer's Registration No.	900
File No.	Drawing No.
Date	Feb. 1, 1938 Scale 1"=40 Poles

30421 is Farm G B Coffman 4 (5)

STATE OF WEST VIRGINIA  
Department of Mines  
OIL AND GAS DIVISION  
CHARLESTON

WELL LOCATION MAP  
File No. HAR-421

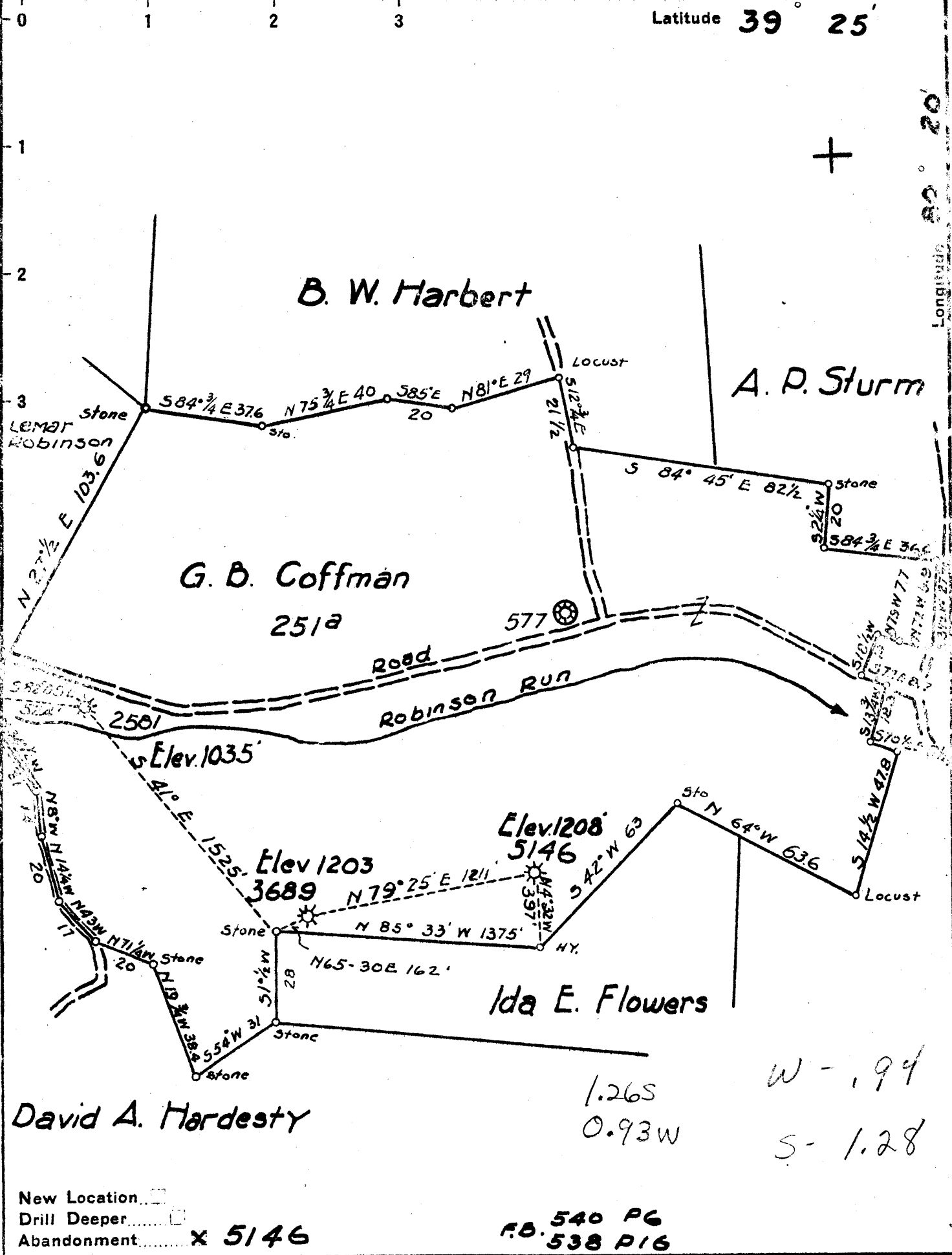
+ Denotes location of well on United States Topographic Maps, scale 1 to 62,500, latitude and longitude lines being represented by border lines as shown.

— Denotes one inch spaces on border line of original tracing.

1938

1938

1938



David A. Hardesty

1.26S  
0.93W  
W - 1.94  
S - 1.28

New Location   
 Drill Deeper   
 Abandonment  5146

F.B. 540 PG  
538 P16

Company HOPE NATURAL GAS CO.  
 Address CLARKSBURG, W. VA.  
 Farm G. B. COFFMAN  
 Tract 1 Acres 252 Lease No. 14197  
 Well (Farm) No. 4 Serial No. 5146  
 Elevation (Spirit Level) 1035, 1203, 1208  
 Quadrangle CLARKSBURG  
 County HARRISON District EAGLE  
 Engineer Wm Bowers  
 Engineer's Registration No. 900  
 File No. \_\_\_\_\_ Drawing No. \_\_\_\_\_  
 Date FEB. 1 - 38 Scale 1" = 40 P.

STATE OF WEST VIRGINIA  
 DEPARTMENT OF MINES  
 OIL AND GAS DIVISION  
 CHARLESTON

WELL LOCATION MAP  
 FILE NO. Harr-421-A  
 Well 5146

HAR-624A  
 WEL-385

\* Denotes location of well on United States Topographic Maps, scale 1 to 62,500, latitude and longitude lines being represented by border lines as shown.

- Denotes one inch spaces on border line of original tracing.