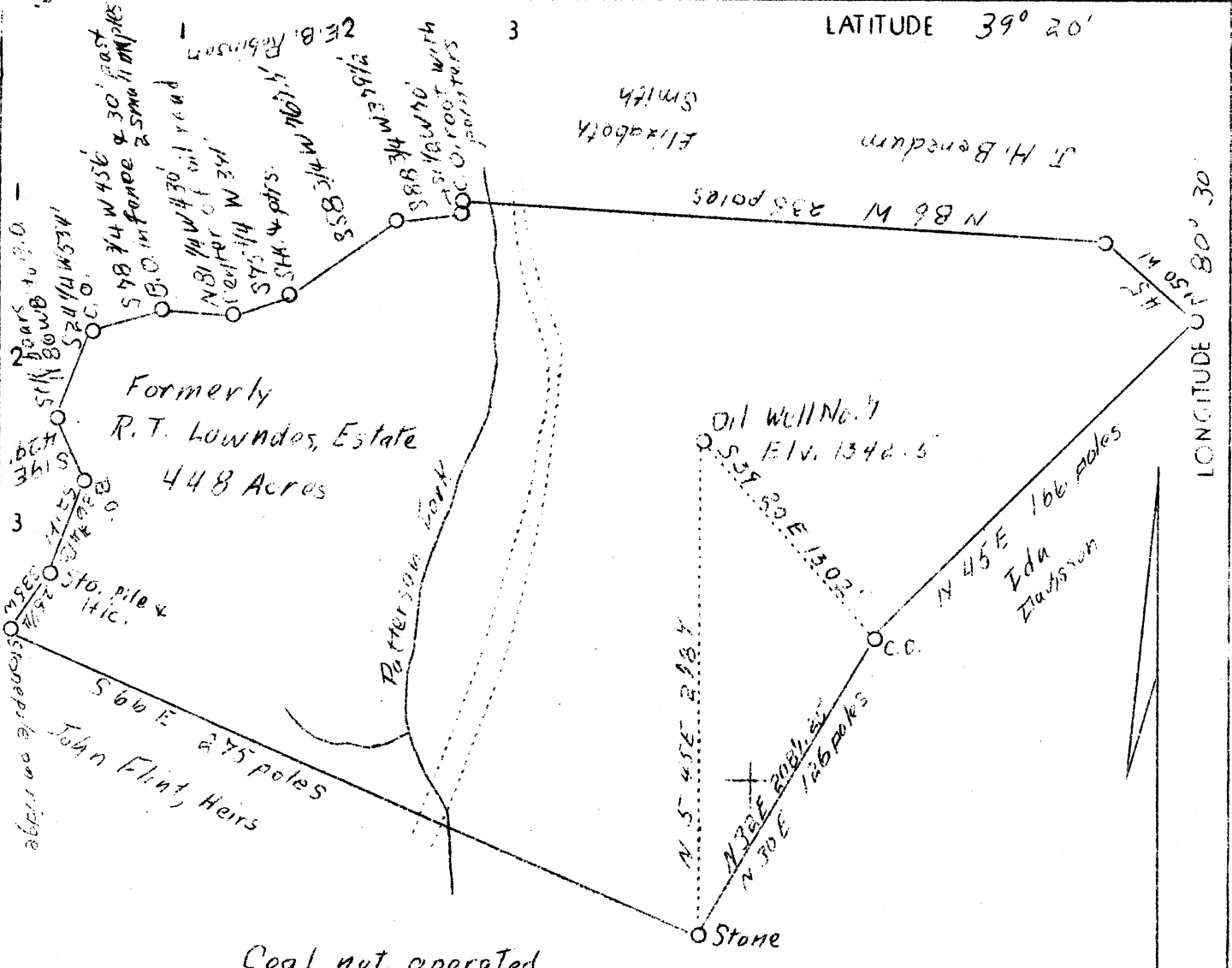


LATITUDE 39° 20'

LONGITUDE 80° 30'



Note: Lines given in feet surveyed in 1928

4.655
2.86W

4.7 S
2.9 W

ABD.

Company	F. G. Bish	1964
Address	Clarksburg, W. Va.	
Farm	W. T. Brown	
Tract	Acres	448 Lease No.
Well (Farm) No.	7	Serial No.
Elevation (Spirit Level)	1342.5	
Quadrangle	Centerpoint	
County	Harrison	District Tennile
Engineer	C. C. Fittro, C. E.	
Engineer's Registration No.	818	
File No.	XYZ	Drawing No. 109
Date	May 18, 1938 Scale 60 poles = 1"	

STATE OF WEST VIRGINIA
Department of Mines
OIL & GAS DIVISION
Charleston

WELL LOCATION MAP

File No. Har-435-A

Denotes location of well on U. S. Topographic Maps, scale 1 to 62,500, latitude and longitude lines being represented by border lines as shown.

Denotes one inch spaces on border line of original tracing.

RECEIVED
MAY 31 1938
VIRGINIA
GENERAL SURVEY

Ten Mile District, Harrison County, W. Va.

By F. G. Bish, Clarksburg, W. Va.

On 448 acres, on Tenmile Creek.

Elevation, 1342½' (?)

Surface owned by W. T. Brown, Walkersville, W. Va., and minerals
by R. T. Lowndes Estate.

Drilling commenced? Sept. 1902.

10" casing, 514'; 8½", 1532'; 6½", ~~2000~~ 2400'. (10" & 8½" pulled).

Coal was encountered at 995-1001'.

Oil well. Abandonment reported to Dept. of Mines May 21, 1938.

Record to RCT from Mrs. Griffith May 27, 1938.

	Top.	Bottom.
Pittsburgh Coal	995	- 1001
Salt Sand	1763	- 1929
Big Lime	2298	- 2400
Big Injun Sand	2400	- 2488
50-Ft. Sand	2955	- 2965
Gordon Stray Sand	3017	- 3057
Gordon Sand (oil, 3065')	3057	- 3075
Total depth		3101

435A

WEST VIRGINIA DEPARTMENT OF MINES
OIL AND GAS DIVISION

347

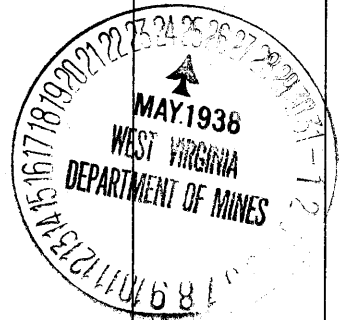
WELL RECORD

Permit No. 435A
HAZ - ~~387A?~~

Oil or Gas Well.....
(Kind)

Company F.G.BISH				Casing and Tubing	Used in Drilling	Left in Well	Packers
Address Clarksburg West Va							
Farm R.T.Lowndes Estate Acres 448				Size			Kind of Packer
Location (waters) Ten Mile							
Well No. Ten Mile Elev. 1542 1/2				16			
District..... County Harrison				13			
The surface of tract is owned in fee by H.T. Brown Walkersville Address West Va				10	514		Size of
Mineral rights are owned by R.T.Lowndes Est Clarksburg Address Sept 1902				8 1/4	1532		Depth set
Drilling commenced.....				6 5/8	2400	2400	
Drilling completed.....				5 3/16			
Date shot..... Depth of shot.....				3			Perf. top
Open Flow /10ths Water in..... Inch				2			Perf. bottom
/10ths Merc. in..... Inch				Liners Used.....			Perf. top
Volume..... Cu. Ft.							Perf. bottom
Rock Pressure..... lbs..... hrs.				CASING CEMENTED..... SIZE..... No. FT..... Date			
Oil..... bbls., 1st 24 hrs.				COAL WAS ENCOUNTERED AT 995 FEET 72 INCHES			
Fresh water..... feet..... feet			 FEET..... INCHES..... FEET..... INCHES			
Salt water..... feet..... feet			 FEET..... INCHES..... FEET..... INCHES			

Formation	Color	Hard or Soft	Top	Bottom	Oil Gas or Water	Depth Found	Remarks
Pittsburg Coal			995	1001			
Salt Sand			1763	1929			
Big Lime			2293	2400			
Big Imjun Sand			2400	2488			
50 ft Sand			2955	2965			
Gordon Stray Sand			3017	3057	Oil		
Gordon Sand			3057	3075	3055		
Total Depth				3101			



Formation	Color	Hard or Soft	Top	Bottom	Oil, Gas or Water	Depth Found	Remarks

Date May 21, 1938

APPROVED F. B. [Signature], Owner

By _____ (Title)