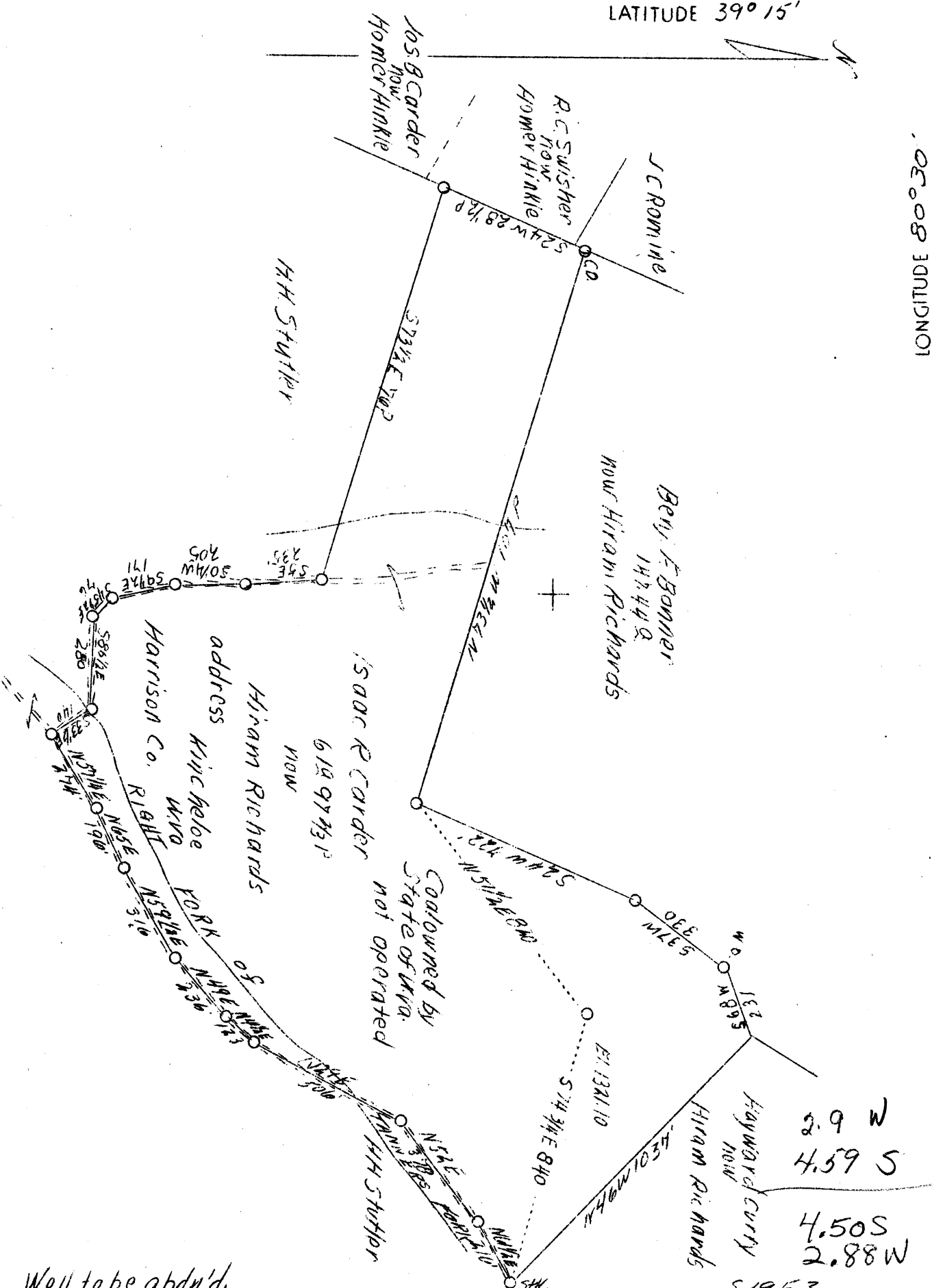


LATITUDE 39° 15'

LONGITUDE 80° 30'



Well to be abdn'd.

Company	South Penn Oil Co. 0772
Address	411 7th. Ave., Pgh. Pa.
Farm	Isaac R. Carder
Acres	62
Lease No.	26953
Well (Farm) No.	1
Quadrangle	Vadis
County	Harrison
District	Union
Eng.	E. C. Tabler
Date	2/6/39
Scale	1" - 400'

STATE OF WEST VIRGINIA Department of Mines OIL AND GAS DIVISION Charleston
WELL LOCATION MAP
File No. <u>Har-465-A</u>
x Denotes location of well on U.S. Topographic Maps, scale 1 to 62,500, latitude and longitude lines being represented by border lines as shown.
- Denotes one inch spaces on border line of original tracing.