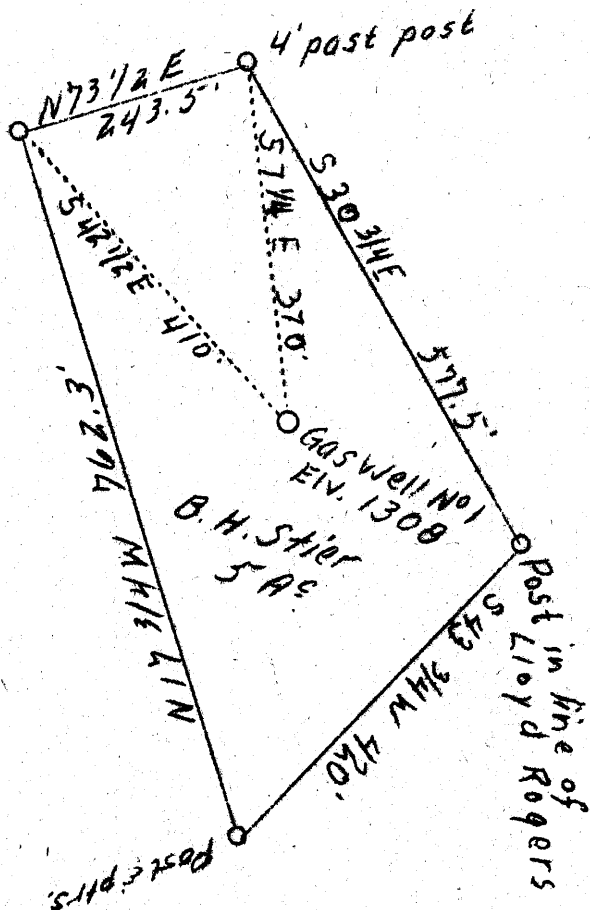


LATITUDE 39° 25'

LONGITUDE 80° 25'

Charles Martin



Cool not operated

W - .4
S - 1.12

1.105
0.38W

ABD.

Company	J. M. Raad, 5258
Address	Salem, W. Va.
Farm	B. H. Stier
Acres	5
Well (Farm) No.	1
Elevation (SL)	1308
Quadrangle	Clarksburg W.
County	Harrison
District	Eagle
Engineer	C. G. Fittro, C. E.
Eng. Reg. No.	818
File No.	XYZ
Drawing No.	127
Date	Sept. 2, 1939
Scale	200' = 1"

STATE OF WEST VIRGINIA
 Department of Mines
 OIL & GAS DIVISION
 Charleston

WELL LOCATION MAP

File No. H01-523-A

x Denotes location of well on U. S. Topographic Maps, scale 1 to 62,500, latitude and longitude lines being represented by border lines as shown.

- Denotes one inch spaces on border line of original tracing.