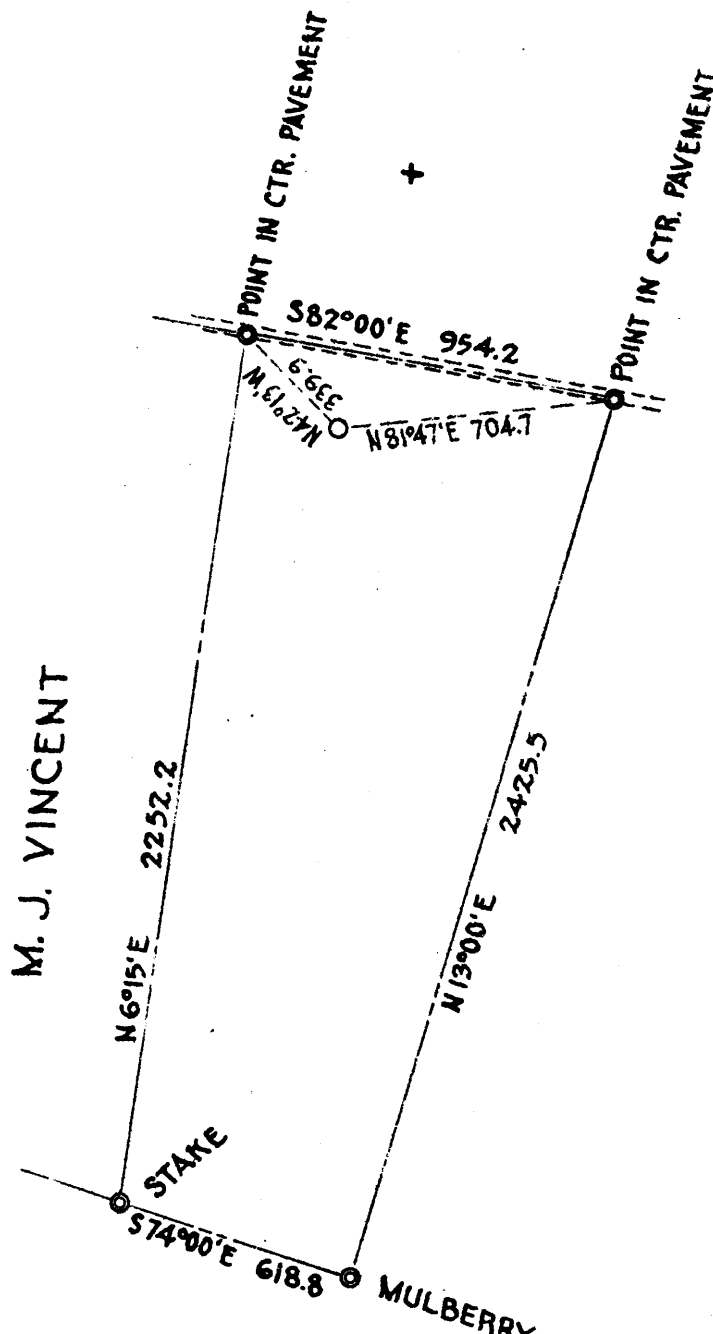


J.E. & R.G. LUCAS



M. J. VINCENT

J.E. & R.G. LUCAS

1.80 S
3.71 W
3.78 W
1.85 S

New Location
 Drill Deeper
 Abandonment

Company V.L. & J.H. HORNOR
 Address LUMBERPORT W.VA.
 Farm GRACE BOGGESS & LEE BOGGESS HRS.
 Tract _____ Acres 40.5 Lease No. _____
 Well (Farm) No. 1 Serial No. _____
 Elevation (Spirit Level) 988.2
 Quadrangle CLARKSBURG
 County HARRISON District EAGLE
 Engineer HORNOR BROS. ENGRS. BY Paul Allen Hornor
 Engineer's Registration No. 602
 File No. _____ Drawing No. _____
 Date MAY 6 1940 Scale 1" = 500'

STATE OF WEST VIRGINIA
 DEPARTMENT OF MINES
 OIL AND GAS DIVISION
 CHARLESTON

WELL LOCATION MAP
 FILE NO. HAR-635A

+ Denotes location of well on United States Topographic Maps, scale 1 to 62,500, latitude and longitude lines being represented by border lines as shown.
 - Denotes one inch spaces on border line of original tracing.

0 1 2 3 Latitude 39 25
 1
 2
 3
 Longitude 80 15
 NORTH