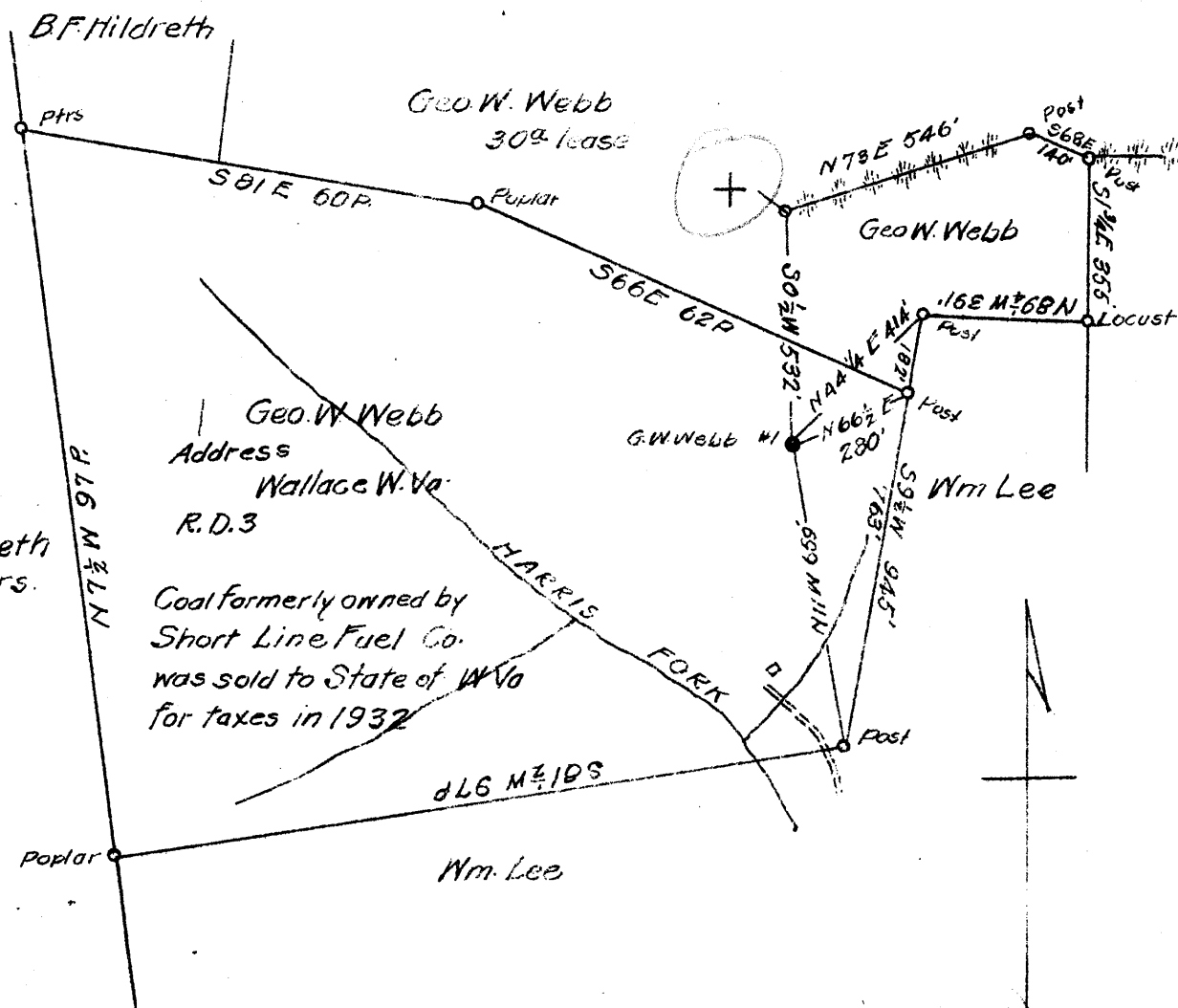


0  
1  
2  
3



Coal formerly owned by Short Line Fuel Co. was sold to State of W. Va. for taxes in 1932

3.19 S  
2.76 W

3.19 S  
2.78 W

New Location   
 Drill Deeper   
 Abandonment

NI-SI-E889

Company South Penn Natural Gas Co.  
 Address Parkersburg W. Va.  
 Farm G. W. Webb  
 Tract \_\_\_\_\_ Acres 40 Lease No. 75519  
 Well (Farm) No. 1 Serial No. \_\_\_\_\_  
 Elevation (Spirit Level) 1236<sup>27</sup> D.F. 1234<sup>27</sup> 6  
 Quadrangle Clarksburg W. Va. NW  
 County Harrison District Eagle  
 Engineer E. C. Tabler  
 Engineer's Registration No. \_\_\_\_\_  
 File No. \_\_\_\_\_ Drawing No. \_\_\_\_\_  
 Date July 9-1941 Scale 1" = 400'

STATE OF WEST VIRGINIA  
 DEPARTMENT OF MINES  
 OIL AND GAS DIVISION  
 CHARLESTON

WELL LOCATION MAP  
 FILE NO. HAR-693A

+ Denotes location of well on United States Topographic Maps, scale 1 to 62,500, latitude and longitude lines being represented by border lines as shown.  
 - Denotes one inch spaces on border line of original tracing.

STATE OF WEST VIRGINIA  
DEPARTMENT OF MINES  
OIL AND GAS DIVISION

556

Permit No. **693-A**

WELL RECORD

Oil or Gas Well **OIL**  
(Kind)

Company **South Penn Natural Gas Company**  
 Address **Union Trust Bldg. Parkersburg, W. Va.**  
 Farm **G. W. Webb** Acres **40**  
 Location (waters) **Bingamon**  
 Well No. **1** Elev. **1243.27**  
 District **Eagle** County **Harrison**  
 The surface of tract is owned in fee by **Geo. W. Webb**  
**R.F.D. No. 3, Address Wallace, W. Va.**  
 Mineral rights are owned by **Richard Webb, Jr. et al**  
**R.F.D. No. 3 Address Wallace, W. Va.**  
 Drilling commenced **Jan. 18, 1909**  
 Drilling completed **Mar. 19, 1909**  
 Date shot **May 26-1909-10qt** Depth of shot **3054'**  
**June 18-1909-20qt** **3053'**  
 Open Flow /10ths Water in **--** Inch  
 /10ths Merc. in **--** Inch  
 Volume **--** Cu. Ft. **CASING CEMENTED --** SIZE **--** No. Ft. **--** Date  
 Rock Pressure **--** lbs. **--** hrs.  
 Oil **-----** bbls., 1st 24 hrs. **COAL WAS ENCOUNTERED AT 946 FEET 72 INCHES**  
 Fresh water **--** feet **--** feet **-- FEET -- INCHES -- FEET -- INCHES**  
 Salt water **1858** feet **1883** feet **-- FEET -- INCHES -- FEET -- INCHES**

Formation	Color	Hard or Soft	Top	Bottom	Oil, Gas or Water	Depth Found	Remarks
Bluff Sand			580	620			
Pittsburgh Coal			946	952			
Little Dunkard			1286	1306			
Sand			1361	1396			
Big Dunkard			1480	1500			
Gas Sand			1730	1780			
Salt Sand			1800	1913			
					Water	1858	
					Water	1883	
Maxon Sand			2095	2120			
Big Lime			2150	2211			
Big Injun			2211	2335			
Fifty Foot			2810	2837			
					Gas	2818	
Thirty Foot			2874	2910			
					Show of Oil	2904	
Sand			2930	2940			
Stray Sand			2985	3033			
					Gas	3023	
Gordon Sand			3043				
					Oil	3055-3058	
Total Depth				3067			



Formation	Color	Hard or Soft	Top	Bottom	Oil, Gas or Water	Depth Found	Remarks

Date **October 6,** 19**41**

APPROVED **SOUTH PENN NATURAL GAS COMPANY**, Owner

By *Elton E. Young* Land Agent  
(Signature)