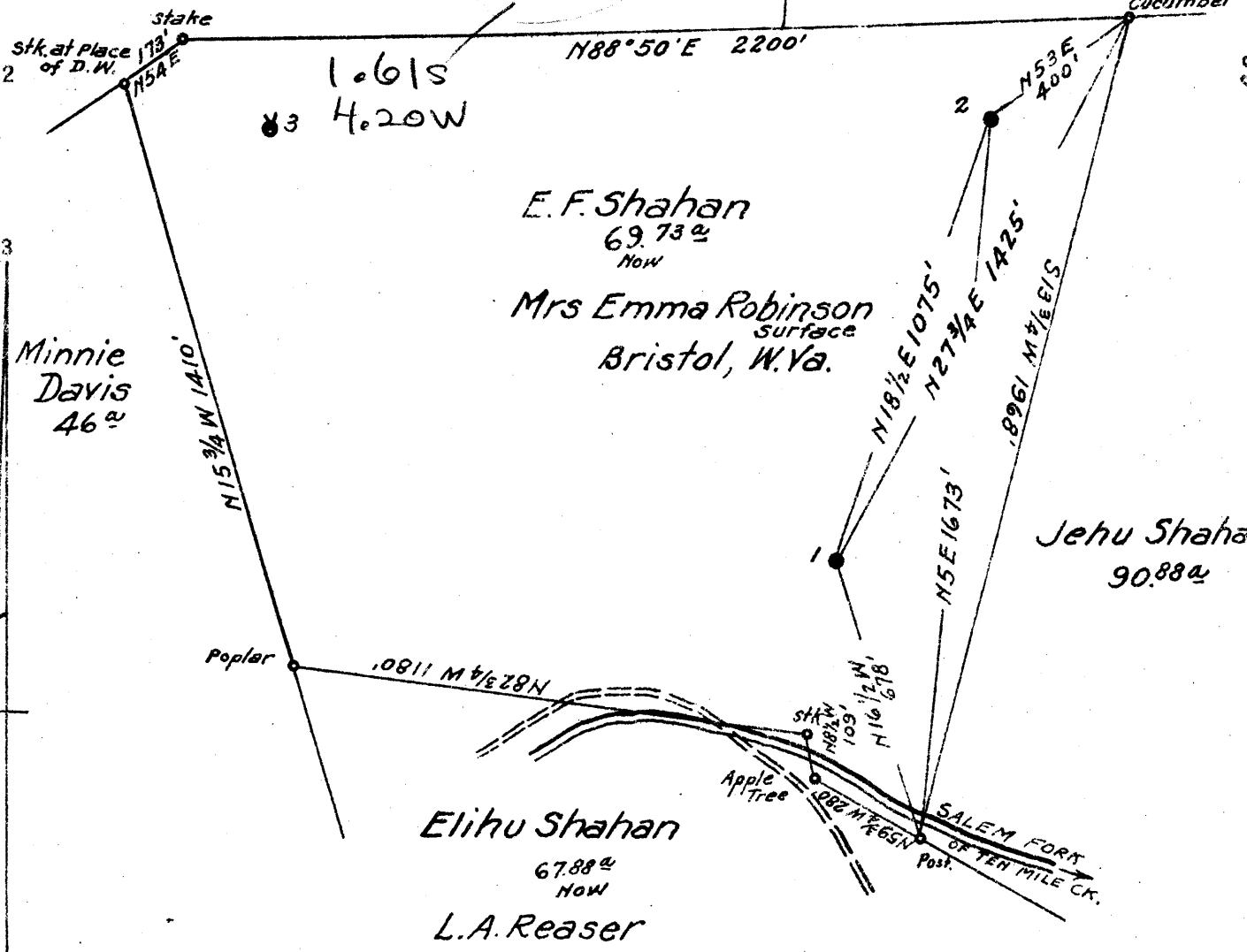


David M. Carter  
223<sup>ac</sup>

F.M. Haney  
NOW  
Roy Hurst  
54.65<sup>ac</sup>



Coal: Mrs. Virginia Tetrick  
Clarksburg, W. Va.

1.63 S  
4.26 W

1.00 S  
4.18 W

S10 E 7 Map N29

New Location...  
Drill Deeper...  
Abandonment... X

Company South Penn Natural Gas Co.  
 Address Parkersburg, W. Va.  
 Farm E.F. Shahan  
 Tract \_\_\_\_\_ Acres 78 Lease No. 32709  
 Well (Farm) No. 1 & 2 Serial No. \_\_\_\_\_  
 Elevation (Spirit Level) 1=1020.18 2=1301.13  
 Quadrangle Clarksburg  
 County Harrison District Ten Mile  
 Engineer E.C. Tabler  
 Engineer's Registration No. \_\_\_\_\_  
 File No. \_\_\_\_\_ Drawing No. \_\_\_\_\_  
 Date Jan. 2, 1942 Scale 1" = 400'

STATE OF WEST VIRGINIA  
 DEPARTMENT OF MINES  
 OIL AND GAS DIVISION  
 CHARLESTON

**WELL LOCATION MAP**

FILE NO. HAR-719-A WELL #1  
HAR-720-A WELL #2

+ Denotes location of well on United States Topographic Maps, scale 1 to 62,500, latitude and longitude lines being represented by border lines as shown.

- Denotes one inch spaces on border line of original tracing



