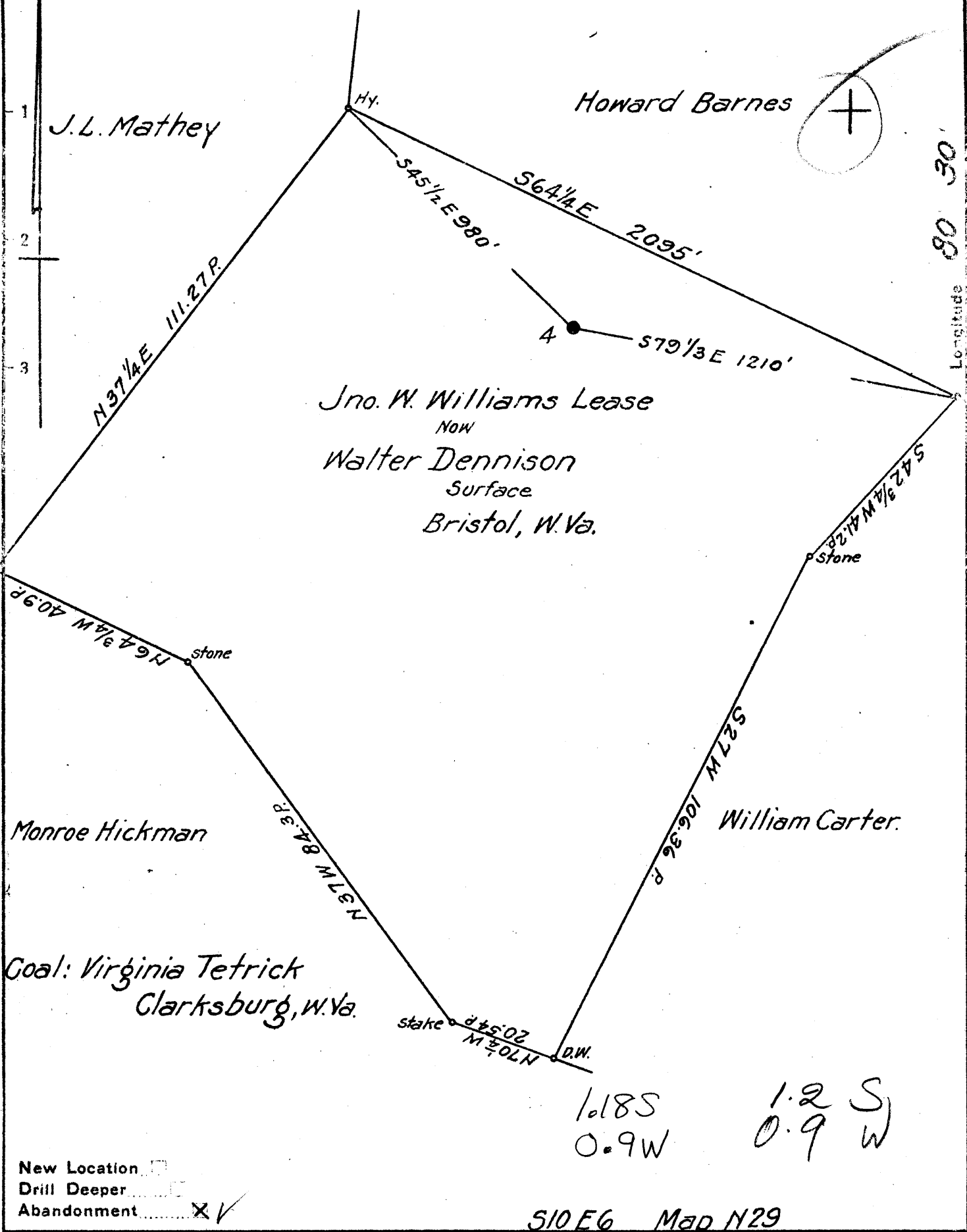


Latitude 39° 20'

1 2 3

Longitude 80° 30'



Company South Penn Natural Gas Co.
 Address Parkersburg, W. Va.
 Farm J. W. Williams
 Tract _____ Acres 109 Lease No. 53066
 Well (Farm) No. 4 Serial No. _____
 Elevation (Spirit Level) 1205.60
 Quadrangle Centerpoint
 County Harrison District Ten Mile
 Engineer Emmon Haines
 Engineer's Registration No. _____
 File No. _____ Drawing No. _____
 Date Apr. 1, 1942 Scale 1" = 400'

STATE OF WEST VIRGINIA
 DEPARTMENT OF MINES
 OIL AND GAS DIVISION
 CHARLESTON

WELL LOCATION MAP
 FILE NO. HAR-738-A

+ Denotes location of well on United States Topographic Maps, scale 1 to 62,500, latitude and longitude lines being represented by border lines as shown.

- Denotes one inch spaces on border line of original tracing.

STATE OF WEST VIRGINIA
DEPARTMENT OF MINES
OIL AND GAS DIVISION

596

Permit No. 738-11

WELL RECORD

Oil or Gas Well OIL-GAS
(KIND)

Company South Penn Natural Gas Company
Address Union Trust Bldg. Parkersburg, W. Va.
Farm J. W. Williams Acres 109
Location (waters) _____
Well No. 4 Elev. 1205.66
District Ten Mile County Harrison
The surface of tract is owned in fee by Walter Dennison
Bristol, W. Va.
Mineral rights are owned by Harvey C. Williams et al
R.R. #1, Box 71, Clarksburg, W. Va.
Drilling commenced _____
Drilling completed _____
Date Shot See below from _____ To _____
With _____
Open Flow /10ths Water in _____ Inch
/10ths Merc. in _____ Inch
Volume _____ Cu. Ft.
Rock Pressure _____ lbs. _____ hrs.
Oil _____ bbls., 1st 24 hrs.
Fresh water _____ feet _____ feet
Salt water _____ feet _____ feet

Casing and Tubing	Used in Drilling	Left in Well	Packers
Size			
16			Kind of Packer -
13			-
10	215'		Size of -
8 1/4	1415'		-
6 5/8	2315'		Depth set -
5 3/16			-
3			Perf. top -
2			Perf. bottom -
Liners Used			Perf. top -
Cond. 16"			Perf. bottom -

CASING CEMENTED - SIZE - No. Ft. - Date
COAL WAS ENCOUNTERED AT 885 FEET 60 INCHES
- FEET - INCHES - FEET - INCHES
- FEET - INCHES - FEET - INCHES

Formation	Color	Hard or Soft	Top	Bottom	Oil, Gas or Water	Depth Found	Remarks
Pittsburgh Coal			885	890			
Salt Sand			1615	1676			
Fifty Foot Sand			2715	- -			
Gordon Sand			2949	2982	Gas & Oil	2835	
Total Depth				2982			

SHOT RECORD:

Nov. - 1901 40 qt.
Dec. - 1901 50 "
Jan. - 1902 20 "
Feb. - 1902 60 "

