

W. B. Brown
&
Flora Layson
157 $\frac{1}{2}$ a

Harper Yerkey
164 $\frac{1}{2}$ a

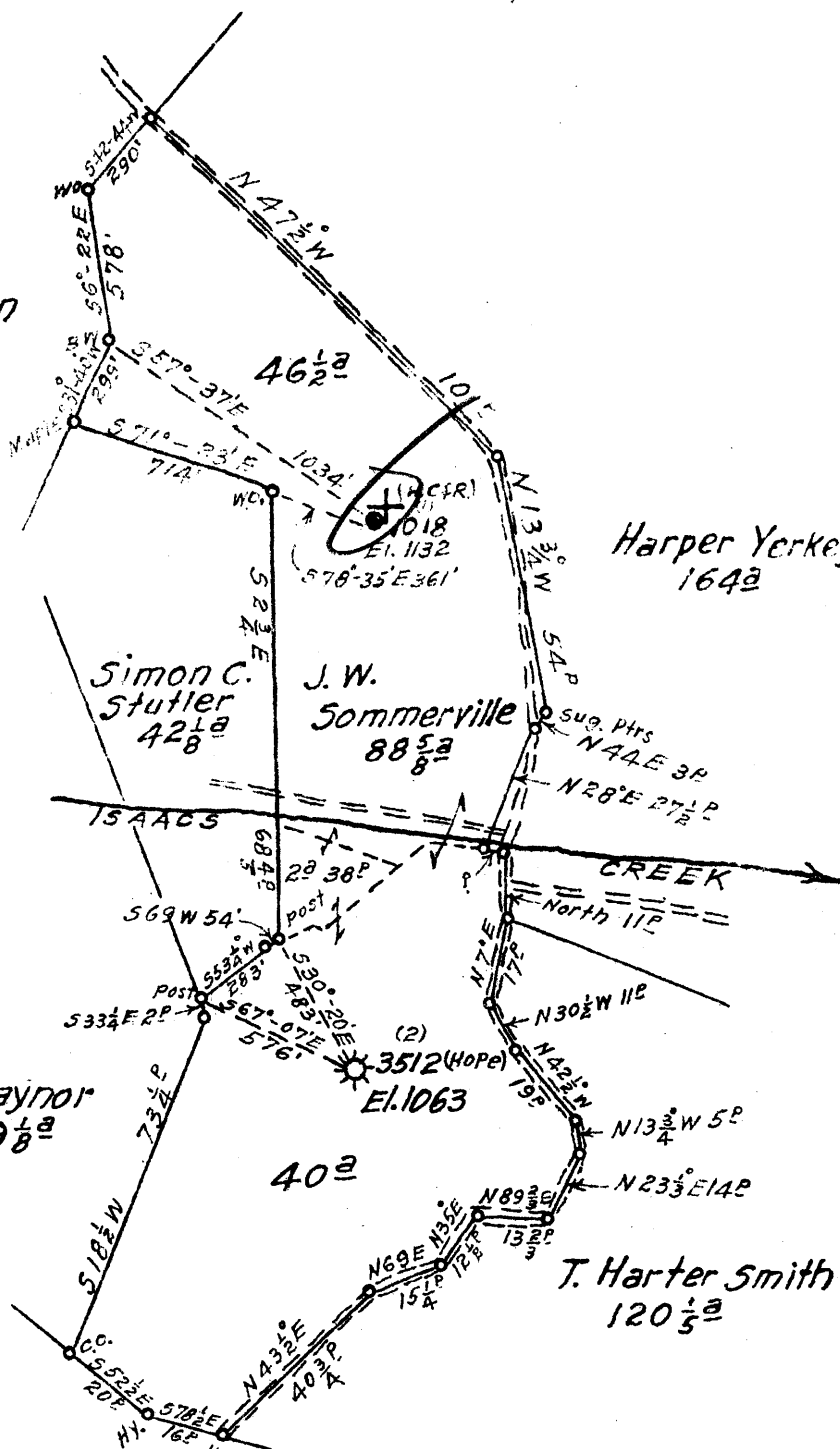
Simon C. Stutler
42 $\frac{1}{2}$ a

J. W. Sommerville
88 $\frac{5}{8}$ a

G. W. Caynor
29 $\frac{1}{8}$ a

T. Harter Smith
120 $\frac{1}{2}$ a

G. W. Caynor
101 $\frac{3}{4}$ a



3.88S
3.38W
3.93S
3.43W

New Location
Drill Deeper
Abandonment

X 1018 (H.C.F.R.) ✓

Map 55 - Square 518 E 7 FB 536 P-40
" 537 P-1

Company HOPE CONSTRUCTION & REFINING CO.
HOPE NATURAL GAS CO.
 Address Clarksburg, W. Va.
 Farm J. W. Sommerville
 Tract _____ Acres 88 $\frac{5}{8}$ Lease No. 6491
13953
 Well (Farm) No. 142 Serial No. 1018 (H.C.F.R.)
3512 (HOPE)
 Elevation (Spirit Level) 1132-1063
 Quadrangle Weston
 County Harrison District Union
 Engineer Wm Bowers
 Engineer's Registration No. 900
 File No. _____ Drawing No. _____
 Date Aug. 12, 1942 Scale 1" = 40⁰⁰

STATE OF WEST VIRGINIA
DEPARTMENT OF MINES
OIL AND GAS DIVISION
CHARLESTON

WELL LOCATION MAP
FILE NO. HAR-743-A-#10

+ Denotes location of well on United States Topographic Maps, scale 1 to 62,500. latitude and longitude lines being represented by border lines as shown.
 - Denotes one inch spaces on border line of original tracing.

STATE OF WEST VIRGINIA
DEPARTMENT OF MINES
OIL AND GAS DIVISION

607

WELL RECORD

Permit No. **743-A**

Oil or Gas Well **Oil**
(KIND)

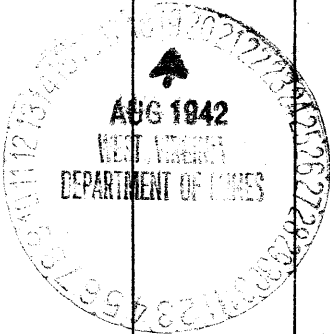
Company **Hope Construction & Refining Company**
Address **445 West Main St. Clarksburg W. Va.**
Farm **J. W. Sommerville** Acres **88-5/8**
Location (waters) **1018** Elev. **1132**
Well No. **1018** District **Union** County **Harrison**
The surface of tract is owned in fee by _____
Mineral rights are owned by _____
Address _____
Drilling commenced **Dec. 20, 1916**
Drilling completed **2/25/17 Deeper June 1926**
Date Shot **4/9/26** From **3129** To **3139**
With **20 qts**

| Casing and Tubing | Used in Drilling | Left in Well | Packers |
|-------------------|------------------|---------------|----------------|
| Size | | | |
| 16. | | | Kind of Packer |
| 13. | | | |
| 10. | 210 | Pulled | Size of |
| 8 1/4. | 1100 | Pulled | |
| 6 3/4. | 1619 | 1619 | Depth set |
| 5 3/16. | 2198 | 2198 | |
| 3. | | | Perf. top |
| 2. | 3185 | 3185 | Perf. bottom |
| Liners Used | | | Perf. top |
| | | | Perf. bottom |

Open Flow /10ths Water in _____ Inch
/10ths Merc. in _____ Inch
Volume _____ Cu. Ft.
Rock Pressure _____ lbs _____ hrs.
Oil _____ bbls., 1st 24 hrs.
Fresh water **None recorded** feet
Salt water **None recorded** feet

CASING CEMENTED _____ SIZE _____ No. Ft. _____ Date _____
Not cemented
COAL WAS ENCOUNTERED AT **96** FEET **48** INCHES
FEET _____ INCHES FEET _____ INCHES
FEET _____ INCHES FEET _____ INCHES

| Formation | Color | Hard or Soft | Top | Bottom | Oil, Gas or Water | Depth Found | Remarks |
|--------------------|-------|--------------|------|-------------|-------------------|-------------|---------|
| Pittsburg | Coal | | 96 | 100 | | | |
| Little Dunkard | | | 600 | 690 | | | |
| Big Dunkard | | | 710 | 795 | | | |
| Gas S and | | | 850 | 895 | | | |
| First Salt | | | 980 | 1085 | | | |
| Second Salt | | | 1120 | 1220 | | | |
| Maxon | | | 1495 | 1510 | | | |
| Little Line | | | 1528 | 1538 | | | |
| Pencil Cave | | | 1538 | 1545 | | | |
| Big Line | | | 1545 | 1598 | | | |
| Big Injun | | | 1598 | 1725 | | | |
| Squaw | | | 1735 | 1760 | | | |
| Berea | | | 1910 | 1925 | | | |
| Gantz | | | 1980 | 1975 | Gas | 1953 | |
| Fifty Foot | | | 2000 | 2030 | | | |
| Thirty Foot | | | 2060 | 2082 | Gas | 2063 | |
| Gordon Stray | | | 2185 | 2197 | | | |
| Gordon | | | 2209 | 2245 | | | |
| Fourth | | | 2246 | 2298 | | | |
| Fifth | | | 2422 | 2436 | Gas | 2424 | |
| Speechley | | | 3127 | 3142 | Oil | 3131 | |
| Total Depth | | | | 3160 | | | |



| Formation | Color | Hard or Soft | Top | Bottom | Oil, Gas or Water | Depth Found | Remarks |
|-----------|-------|--------------|-----|--------|-------------------|-------------|---------|
| | | | | | | | |

Date 14 August 22, 1942, 194

APPROVED Hope Construction & Refining Co., Owner

By [Signature] Gen. Sup't.
(Title)