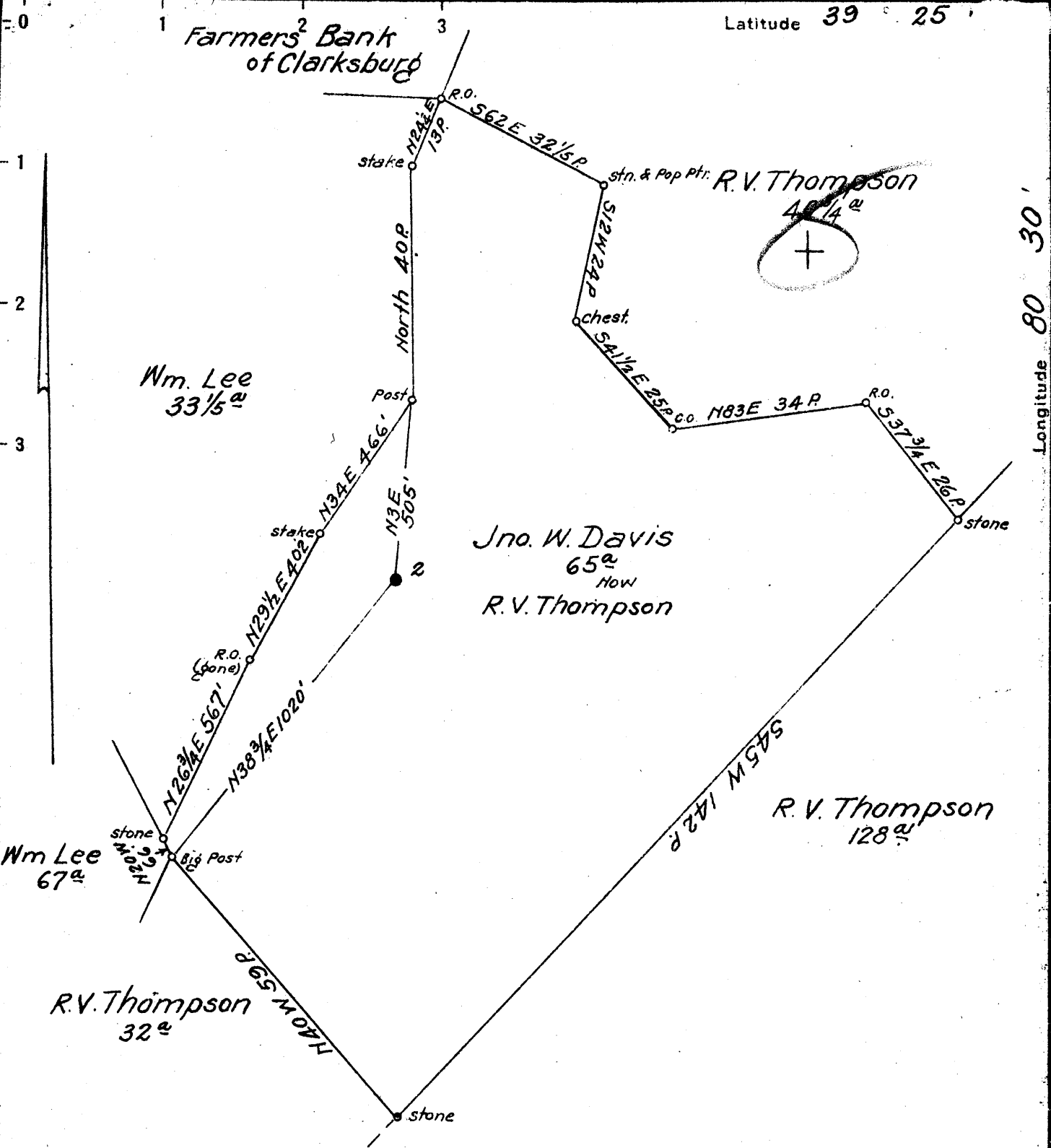


Latitude 39 25

Longitude 80 30

Farmers Bank of Clarksburg



Coal: State of West Virginia  
 Surface: R.V. Thompson  
 Wallace, W. Va.

1.80 S  
 1.74 W  
 1.73 W

- New Location
- Drill Deeper
- Abandonment

S4-5 E5 Map N39

Company South Penn Natural Gas Co.  
 Address Parkersburg, W. Va.  
 Farm Jno. W. Davis  
 Tract \_\_\_\_\_ Acres 65 Lease No. 28453  
 Well (Farm) No. 2 Serial No. \_\_\_\_\_  
 Elevation (Spirit Level) 1457.67  
 Quadrangle Centerpoint  
 County Harrison District Sardis  
 Engineer Emmon Haines  
 Engineer's Registration No. \_\_\_\_\_  
 File No. \_\_\_\_\_ Drawing No. \_\_\_\_\_  
 Date Feb. 5, 1942 Scale 1" = 400'

STATE OF WEST VIRGINIA  
 DEPARTMENT OF MINES  
 OIL AND GAS DIVISION  
 CHARLESTON

WELL LOCATION MAP  
 FILE NO. HAR-758-A

+ Denotes location of well on United States Topographic Maps, scale 1 to 62,500, latitude and longitude lines being represented by border lines as shown.

- Denotes one inch spaces on border line of original tracing.

STATE OF WEST VIRGINIA  
DEPARTMENT OF MINES  
OIL AND GAS DIVISION

616

WELL RECORD

OIL

Permit No. 758-A

Oil or Gas Well (KIND)

Company **South Penn Natural Gas Company**  
 Address **Union Trust Bldg. Parkersburg, W. Va.**  
 Farm **Jno. W. Davis** Acres **65**  
 Location (waters) **Big Rock Camp**  
 Well No. **2** Elev. **1457.67**  
 District **Sardis** County **Harrison**  
 The surface of tract is owned in fee by **R. V. Thompson**  
 Address **Wallace, W. Va.**  
 Mineral rights are owned by **M. G. Sperry et al**  
 Address **Empire Bldg. Clarksburg, W. Va.**  
 Drilling commenced **June 21, 1904**  
 Drilling completed **Sept. 20, 1904**  
 Date Shot **See below** From **--** To **--**  
 With **--**  
 Open Flow /10ths Water in **--** Inch  
 /10ths Merc. in **--** Inch  
 Volume **--** Cu. Ft.  
 Rock Pressure **--** lbs. **--** hrs.  
 Oil **5** bbls., 1st 24 hrs.  
 Fresh water **--** feet **--** feet  
 Salt water **--** feet **--** feet

Casing and Tubing	Used in Drilling	Left in Well	Packers
Size			
16.			Kind of Packer
13.			
10.	<b>300' (Pulled)</b>		Size of
8 1/4	<b>1608'</b>		
6 5/8	<b>2654'</b>		Depth set
5 3/16			
3.			Perf. top
2.			Perf. bottom
Liners Used			Perf. top
<b>Cond.</b>	<b>16'</b>		Perf. bottom

CASING CEMENTED **--** SIZE **--** No. Ft. **--** Date **--**  
 COAL WAS ENCOUNTERED AT **1200** FEET **60** INCHES  
**--** FEET **--** INCHES **--** FEET **--** INCHES  
**--** FEET **--** INCHES **--** FEET **--** INCHES

Formation	Color	Hard or Soft	Top	Bottom	Oil, Gas or Water	Depth Found	Remarks
Pittsburgh Coal			1200	1205			
Dunkard Sand			1608	1708			
Salt Sand			2117	2138			
Maxon Sand			2310	2350			
Little Lime			2350	2357			
Big Lime			2460	2512			
Big Injun Sand			2512	2614			
50 Ft. Sand			3110	3125			
Boulder Sand			3190	3230			
Stray Sand			3260	3307			
Gordon Sand			3327	3340			
					<b>Oil</b>	<b>3339</b>	

Total Depth

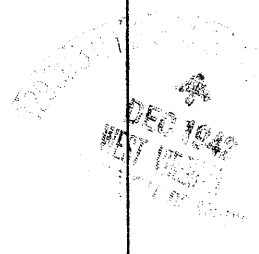
3605

Filled back to

3385

SHOT RECORD:

9-26-04 - 30 Qts.  
 9-29-04 - 40 "  
 10-2-24 - 40 "



Formation	Color	Hard or Soft	Top	Bottom	Oil, Gas or Water	Depth Found	Remarks

Date December 4, 1942., 194

APPROVED SOUTH PENN NATURAL GAS COMPANY, Owner

By Elton Young Land Agent.  
(Title)