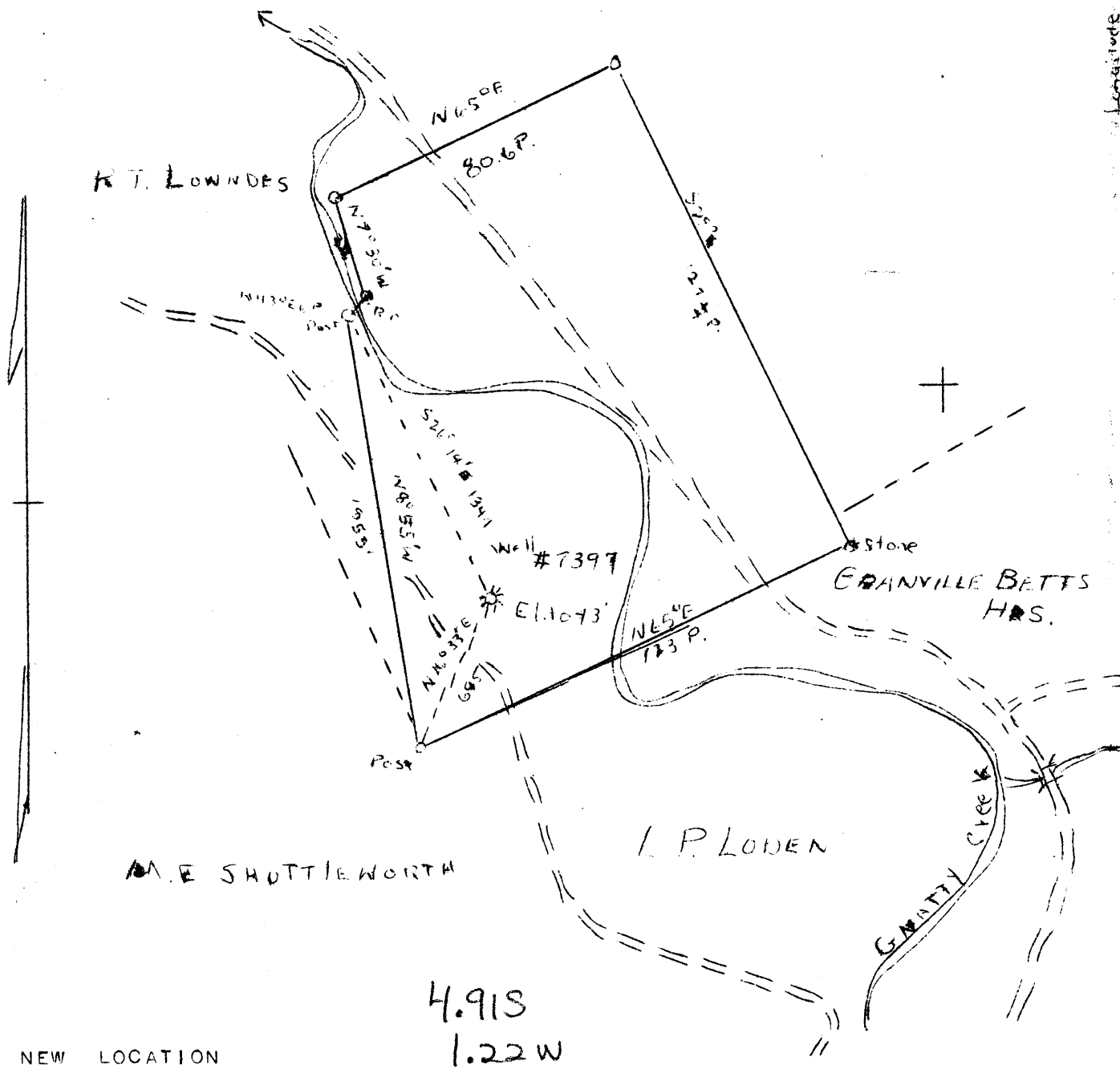


JOHN PATTON HRS. ETAL.



NEW LOCATION  
 DRILL DEEPER  
 ABANDONMENT ✕

4.91 S  
 1.22 W

Map S1.56 S9.520 E-18 F. 516 P. 25

COMPANY	HOPE NATURAL GAS CO.
ADDRESS	CLAPKSBURG, W. VA.
FARM	JOHN PATTON
TRACT	ACRES 86 LEASE NO 44600
WELL (FARM) NO	SERIAL NO. 7397
ELEVATION (SPIRIT LEVEL)	1043'
QUADRANGLE	WESTON
COUNTY	HARRISON DISTRICT ELK
ENGINEER	WM BOWERS ✕
ENGINEER'S REGISTRATION NO	900
FILE NO.	DRAWING NO.
DATE	FEB 1, 1946 SCALE 1" = 40 P.

STATE OF WEST VIRGINIA  
 DEPARTMENT OF MINES  
 OIL AND GAS DIVISION  
 CHARLESTON

WELL LOCATION MAP

FILE NO. HAR 946-A

✕ DENOTES LOCATION ON WELL ON UNITED STATES TOPOGRAPHIC MAPS, SCALE 1 TO 62,500, LATITUDE AND LONGITUDE LINES BEING REPRESENTED BY BORDER LINES AS SHOWN.

✕ DENOTES ONE INCH SPACES ON BORDER LINE OF ORIGINAL TRACING.



STATE OF WEST VIRGINIA  
DEPARTMENT OF MINES  
OIL AND GAS DIVISION

814

946-A

WELL RECORD

Permit No. \_\_\_\_\_ or Gas Well \_\_\_\_\_ (KIND)

Company Hope Natural Gas Company.  
 Address 445 West Main St. Clarksburg, W.Va.  
 Farm John Patton Acres 86  
 Location (waters) \_\_\_\_\_  
 Well No. 7397 Elev. 1043  
 District Elk County Harrison  
 The surface of tract is owned in fee by \_\_\_\_\_  
 Address \_\_\_\_\_  
 Mineral rights are owned by \_\_\_\_\_  
 Address \_\_\_\_\_  
 Drilling commenced May 8, 1925  
 Drilling completed July, 15, 1925  
 Date Shot \_\_\_\_\_ From \_\_\_\_\_ To \_\_\_\_\_  
 With \_\_\_\_\_  
 Open Flow \_\_\_\_\_ /10ths Water in \_\_\_\_\_ Inch  
 \_\_\_\_\_ /10ths Merc. in \_\_\_\_\_ Inch  
 Volume \_\_\_\_\_ Cu. Ft.  
 Rock Pressure \_\_\_\_\_ lbs. \_\_\_\_\_ hrs.  
 Oil \_\_\_\_\_ bbls., 1st 24 hrs.  
 Fresh water 420 feet \_\_\_\_\_ feet  
 Salt water \_\_\_\_\_ feet \_\_\_\_\_ feet

Casing and Tubing	Used in Drilling	Left in Well	Packers
Size			
16			Kind of Packer
13			
10	69	69	Size of
8 1/4	723	723	
6 3/8	1290	1290	Depth set
5 3/16			
3			Perf. top
2	2198	2198	Perf. bottom
Liners Used			Perf. top
			Perf. bottom

**not cemented**  
 CASING CEMENTED \_\_\_\_\_ SIZE \_\_\_\_\_ No. Ft. \_\_\_\_\_ Date \_\_\_\_\_  
**none recorded**  
 COAL WAS ENCOUNTERED AT \_\_\_\_\_ FEET \_\_\_\_\_ INCHES  
 \_\_\_\_\_ FEET \_\_\_\_\_ INCHES FEET \_\_\_\_\_ INCHES  
 \_\_\_\_\_ FEET \_\_\_\_\_ INCHES FEET \_\_\_\_\_ INCHES

Formation	Color	Hard or Soft	Top	Bottom	Oil, Gas or Water	Depth Found	Remarks
Little Dunkard			110	130			
Big Dunkard			210	255	gas water	210 420	
First Salt			515	575			
Second Salt			605	721			
Big Lime			1219	1282			
Big Injun			1282	1400			
Berea			1580	1575			
Gantz			1620	1745	show gas	1710	
Fifty foot			1755	1840			
Thirty foot			1862	1880			
Fourth			2086	2096			
Fifth			2165	2189	gas	2167	
Total depth				2198			

Formation	Color	Hard or Soft	Top	Bottom	Oil, Gas or Water	Depth Found	Remarks

Date February 7, 1946., 194

APPROVED Hope Natural Gas Company., Owner

By [Signature] General Superintendent.

