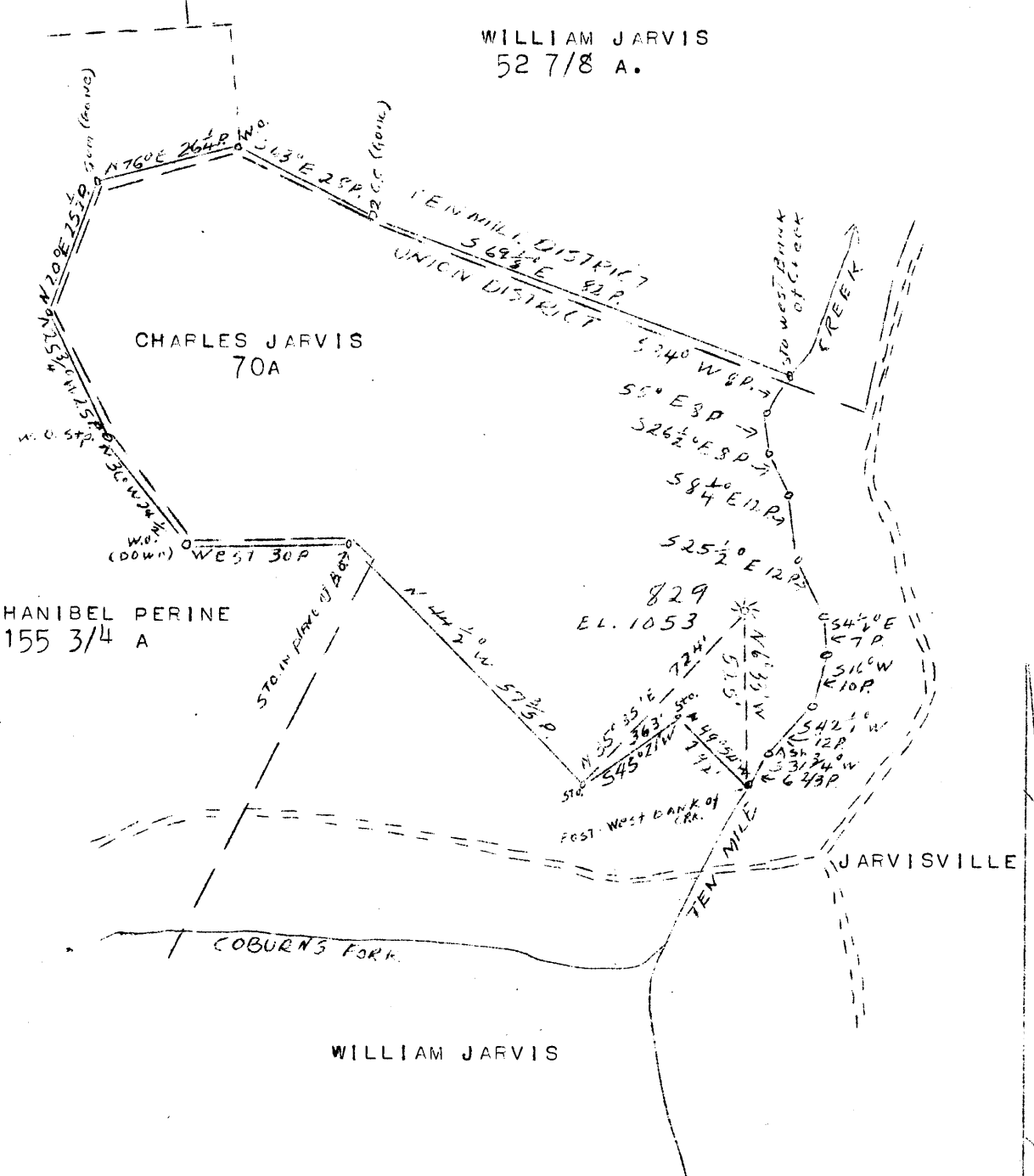


*Handwritten:* +? same as another well



NEW LOCATION  
DRILL DEEPER  
ABANDONMENT X

0.94S  
3.70W

MAP SHEET 55 SQUARES S 15 E 7 FB 775 P 21

COMPANY	HOPE NATURAL GAS CO.
ADDRESS	CLARKSBURG, W. VA.
FARM	CHARLES JARVIS
TRACT	ACRES 70 LEASE NO. 2301
WELL (FARM NO.)	(SERIAL NO. 829)
ELEVATION (SPIFIT LEVEL)	1053
QUADRANGLE	WESTON
COUNTY	HARRISON DIST. UNION
ENGINEER	W. M. BOWERS
ENGINEER'S REGISTRATION NO.	900
FILE NO.	DRAWING NO.
DATE 3/22/46	SCALE 1" - 30 P

STATE OF WEST VIRGINIA  
DEPARTMENT OF MINES  
OIL AND GAS DIVISION  
WELL LOCATION MAP  
FILE NO. HAR 966A

- DENOTES LOCATION OF WELL ON UNITED STATES TOPOGRAPHIC MAPS, SCALE 1 TO 62,500, LATITUDE AND LONGITUDE LINES BEING REPRESENTED BY BORDER LINES AS SHOWN.

- DENOTES ONE INCH SPACES ON BORDER LINE OF ORIGINAL TRACING.



STATE OF WEST VIRGINIA  
DEPARTMENT OF MINES  
OIL AND GAS DIVISION

808

966-A

WELL RECORD

Permit No. \_\_\_\_\_ or Gas Well \_\_\_\_\_ (KIND)

Company Hope Natural Gas Company.  
 Address 445 West Main St. Clarksburg, W.Va.  
 Farm Charles Jarvis Acres 70  
 Location (waters) \_\_\_\_\_  
 Well No. 829 Elev. 1053  
 District Union, County Harrison  
 The surface of tract is owned in fee by \_\_\_\_\_  
 Address \_\_\_\_\_  
 Mineral rights are owned by \_\_\_\_\_  
 Address \_\_\_\_\_  
 Drilling commenced June 6, 1906  
 Drilling completed July 14, 1906  
 Date Shot \_\_\_\_\_ From \_\_\_\_\_ To \_\_\_\_\_  
 With \_\_\_\_\_  
 Open Flow \_\_\_\_\_ /10ths Water in \_\_\_\_\_ Inch  
 \_\_\_\_\_ /10ths Merc. in \_\_\_\_\_ Inch  
 Volume \_\_\_\_\_ Cu. Ft.  
 Rock Pressure \_\_\_\_\_ lbs. \_\_\_\_\_ hrs.  
 Oil \_\_\_\_\_ bbls., 1st 24 hrs.  
 Fresh water none feet \_\_\_\_\_ feet  
 Salt water none feet \_\_\_\_\_ feet

Casing and Tubing	Used in Drilling	Left in Well	Packers
Size			
16			Kind of Packer
13			
10	163	Pulled	Size of
8 1/4	1458	1458	
6 5/8			Depth set
5 3/16	2083	2083	
3			Perf. top
2			Perf. bottom
Liners Used			Perf. top
			Perf. bottom

**Not cemented**  
 CASING CEMENTED \_\_\_\_\_ SIZE \_\_\_\_\_ No. Ft. \_\_\_\_\_ Date \_\_\_\_\_  
 COAL WAS ENCOUNTERED AT 45 FEET 72 INCHES  
 \_\_\_\_\_ FEET \_\_\_\_\_ INCHES \_\_\_\_\_ FEET \_\_\_\_\_ INCHES  
 \_\_\_\_\_ FEET \_\_\_\_\_ INCHES \_\_\_\_\_ FEET \_\_\_\_\_ INCHES

Formation	Color	Hard or Soft	Top	Bottom	Oil, Gas or Water	Depth Found	Remarks
Pittsburgh Coal			45	51			
Big Dunkard			545	610			
Gas sand			740	870			
Salt sand			900	1080			
Maxon			1173	1253			
Little Lime			1405	1425			
Pencil cave			1450	1458			
Big Lime			1458	1540			
Big Injun			1540	1605			
Gantz			1853	1878			
Fifty foot			1963	1984			
Thirty foot			2043	2070			
Gordon stray			2073	2145	gas	2097	
Gordon			2152	2198	gas	2168	
Fourth			2201	2224			
Fifth			2372	2378	gas	2373	
Total depth				2585			

MAR 10 1906  
 HARRISON COUNTY  
 DEPARTMENT OF MINES  
 OIL AND GAS DIVISION

Formation	Color	Hard or Soft	Top	Bottom	Oil, Gas or Water	Depth Found	Remarks

Date March 23, 1946., 194

APPROVED Hope Natural Gas Company., Owner

By [Signature] General Superintendent