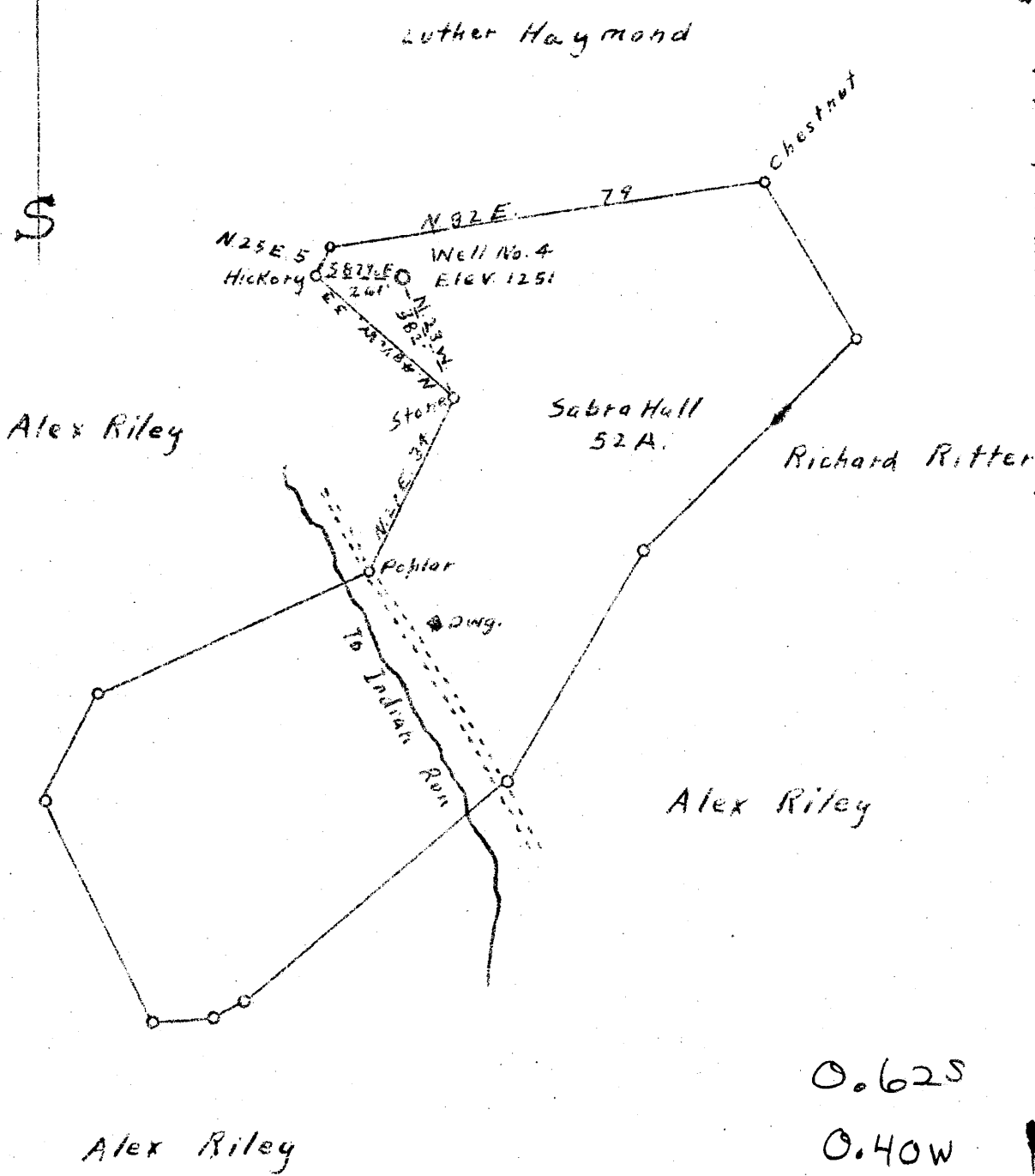


0  
1  
2  
3

30  
80  
Longitude



0.625  
0.40W

New Location  
Drill Deeper  
Abandonment

Company William Moses  
 Address 189 W. Main St. Salem W. Va.  
 Farm Sabra Hall  
 Tract \_\_\_\_\_ Acres 52 Lease No. \_\_\_\_\_  
 Well (Farm) No. 4 Serial No. \_\_\_\_\_  
 Elevation (Spirit Level) 1251  
 Quadrangle Centerpoint  
 County Harrison District Tea mile  
 Engineer A. R. W. Cooper  
 Engineer's Registration No. 5, S. R. Co.  
 File No. \_\_\_\_\_ Drawing No. \_\_\_\_\_  
 Date Oct 1, 1945 Scale 1" = 30 Poles

STATE OF WEST VIRGINIA  
 DEPARTMENT OF MINES  
 OIL AND GAS DIVISION  
 CHARLESTON

WELL LOCATION MAP  
 FILE NO. HAR 971-A

+ Denotes location of well on United States Topographic Maps, scale 1 to 62,500, latitude and longitude lines being represented by border lines as shown.

- Denotes one inch spaces on border line of original tracing.



803

STATE OF WEST VIRGINIA  
DEPARTMENT OF MINES  
OIL AND GAS DIVISION

WELL RECORD

Permit No. 971-A Oil or Gas Well \_\_\_\_\_ (KIND)

Company William Moses  
 Address Salem, W. Va.  
 Farm Sabra Hall Acres 52  
 Location (waters) \_\_\_\_\_  
 Well No. 4 Elev. 1251  
 District Tennile County Harrison  
 The surface of tract is owned in fee by S. P. N. Gas Co.,  
 Address Parkersburg, W. Va.  
 Mineral rights are owned by \_\_\_\_\_  
 Address \_\_\_\_\_  
 Drilling commenced \_\_\_\_\_  
 Drilling completed \_\_\_\_\_  
 Date Shot \_\_\_\_\_ From \_\_\_\_\_ To \_\_\_\_\_  
 With \_\_\_\_\_  
 Open Flow \_\_\_\_\_ /10ths Water in \_\_\_\_\_ Inch  
 \_\_\_\_\_ /10ths Merc. in \_\_\_\_\_ Inch  
 Volume \_\_\_\_\_ Cu. Ft.  
 Rock Pressure \_\_\_\_\_ lbs. \_\_\_\_\_ hrs.  
 Oil \_\_\_\_\_ bbls., 1st 24 hrs.  
 Fresh water \_\_\_\_\_ feet \_\_\_\_\_ feet  
 Salt water \_\_\_\_\_ feet \_\_\_\_\_ feet

Casing and Tubing	Used in Drilling	Left in Well	Packers
Size			
16			Kind of Packer
13			
10			Size of
6 5/8		<b>2332</b>	Depth set
5 3/16			
3			Perf. top
2		<b>3000</b>	Perf. bottom
Liners Used			Perf. top
			Perf. bottom

CASING CEMENTED \_\_\_\_\_ SIZE \_\_\_\_\_ No. Ft. \_\_\_\_\_ Date \_\_\_\_\_  
 COAL WAS ENCOUNTERED AT **934** FEET \_\_\_\_\_ INCHES  
 \_\_\_\_\_ FEET \_\_\_\_\_ INCHES FEET \_\_\_\_\_ INCHES  
 \_\_\_\_\_ FEET \_\_\_\_\_ INCHES FEET \_\_\_\_\_ INCHES

Formation	Color	Hard or Soft	Top	Bottom	Oil, Gas or Water	Depth Found	Remarks
P. Coal			934	940			
Dunkard			1434	1470			
B. Lime			2192	2252			
Injyn			2252	2351			
Stray			2956	2991			
Gorden			3001	3018			
Total Depth			3018				

