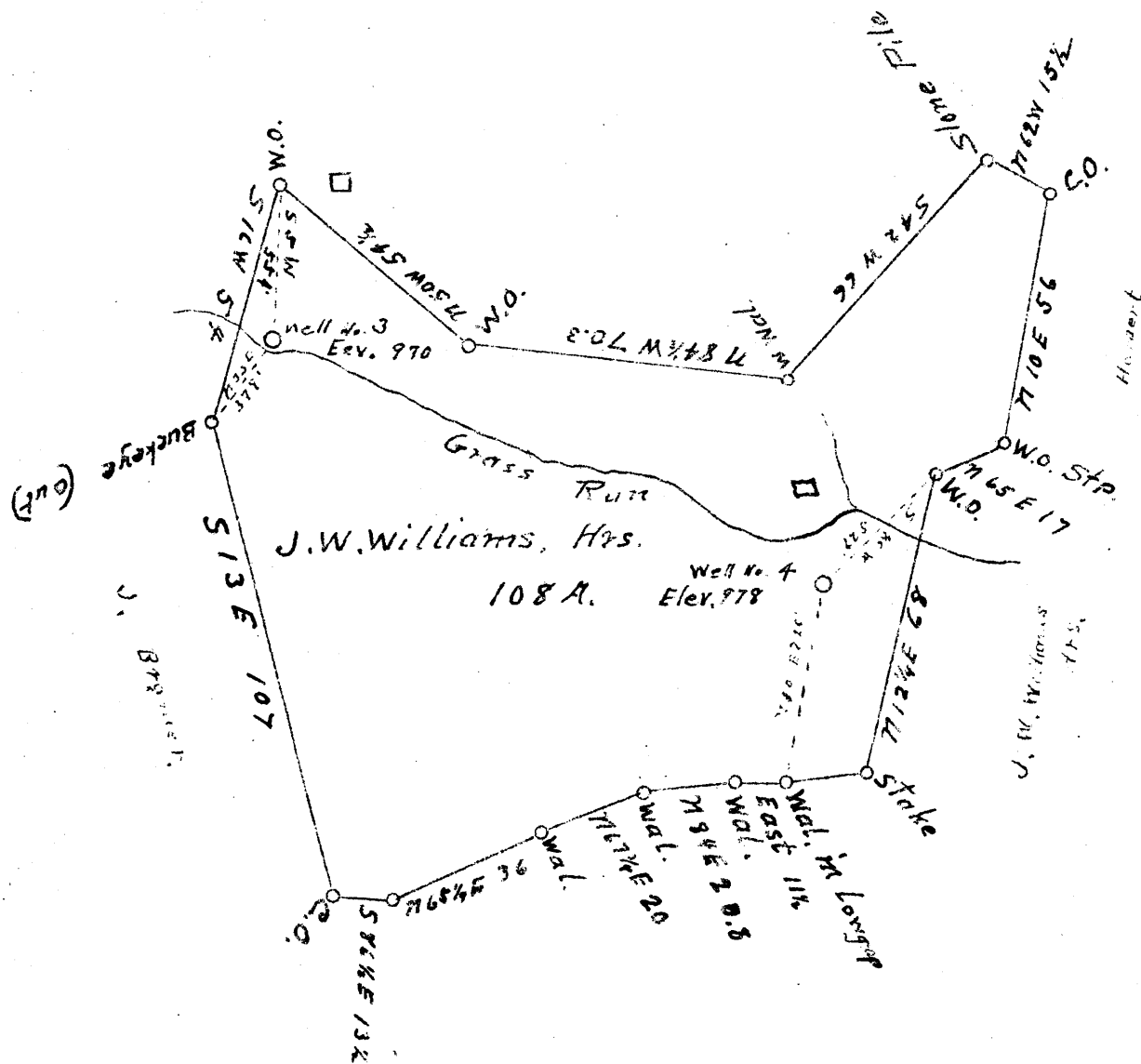


0.345  
3.42W

+ No. 3  
+ No. 4

0.52S  
3.04W

Longitude 80



New Location

Drill Deeper

Abandonment

Company L. E. Zogg

Address Marietta Ohio.

Farm J. W. Williams, Hrs.

Tract 076 Acres 108 Lease No. \_\_\_\_\_

Well (Farm) No. 3 & 4 Serial No. \_\_\_\_\_

Elevation (Spirit Level) 970 & 978

Quadrangle Clarkburg

County Harrison District Ten Mile

Engineer J. M. Martin

Engineer's Registration No. 84

File No. \_\_\_\_\_ Drawing No. \_\_\_\_\_

Date Nov. 2" 1946 Scale 40

STATE OF WEST VIRGINIA  
DEPARTMENT OF MINES  
OIL AND GAS DIVISION  
CHARLESTON

WELL LOCATION MAP

FILE NO. HAR-1026-A; # 3  
HAR-1027-A; # 4

+ Denotes location of well on United States Topographic Maps, scale 1 to 62,500, latitude and longitude lines being represented by border lines as shown.

- Denotes one inch spaces on border line of original tracing.



STATE OF WEST VIRGINIA  
DEPARTMENT OF MINES  
OIL AND GAS DIVISION

886

WELL RECORD

Permit No. 1076-A

Oil or Gas Well Gas  
(KIND)

Company L. S. Zogg  
Address R. D. #3, Marietta, Ohio  
Farm J. W. Williams Heirs Acres 100  
Location (waters) Cass Run  
Well No. 3 Elev. 970  
District Ton Mile County Harrison  
The surface of tract is owned in fee by J. W. Williams Heirs  
Address Clarksburg, W. Va.  
Mineral rights are owned by Same  
Address \_\_\_\_\_

Drilling commenced \_\_\_\_\_  
Drilling completed August 1925  
Date Shot \_\_\_\_\_ From \_\_\_\_\_ To \_\_\_\_\_  
With \_\_\_\_\_  
Open Flow \_\_\_\_\_ /10ths Water in \_\_\_\_\_ Inch  
11/10ths Merc. in Three Inch  
Volume 415,000 Cu. Ft.  
Rock Pressure \_\_\_\_\_ lbs. \_\_\_\_\_ hrs.  
Oil \_\_\_\_\_ bbls., 1st 24 hrs.  
Fresh water \_\_\_\_\_ feet \_\_\_\_\_ feet  
Salt water \_\_\_\_\_ feet \_\_\_\_\_ feet

Casing and Tubing	Used in Drilling	Left in Well	Packers
Size			
16			Kind of Packer _____
13			
10	<u>240'</u>	<u>None</u>	Size of <u>6 5/8"</u>
8 1/4	<u>895'</u>	<u>895'</u>	<u>x 8 1/4"</u>
6 1/2	<u>1755'</u>	<u>1755'</u>	Depth set <u>1610'</u>
5 3/16			
3			Perf. top _____
2			Perf. bottom _____
Liners Used			Perf. top _____
			Perf. bottom _____

CASING CEMENTED \_\_\_\_\_ SIZE \_\_\_\_\_ No. Ft. \_\_\_\_\_ Date \_\_\_\_\_  
COAL WAS ENCOUNTERED AT 414 FEET \_\_\_\_\_ INCHES  
\_\_\_\_\_ FEET \_\_\_\_\_ INCHES \_\_\_\_\_ FEET \_\_\_\_\_ INCHES  
\_\_\_\_\_ FEET \_\_\_\_\_ INCHES \_\_\_\_\_ FEET \_\_\_\_\_ INCHES

Formation	Color	Hard or Soft	Top	Bottom	Oil, Gas or Water	Depth Found	Remarks
<b>Pittsburgh Coal</b>			<b>414</b>	<b>420</b>			
<b>Mazon Sand</b>			<b>1672</b>	<b>1696</b>	<b>Gas</b>	<b>1675</b>	
<b>Big Lime</b>			<b>1754</b>	<b>1792</b>			
<b>Big Injun</b>			<b>1792</b>	<b>1892</b>			
<b>50 Foot Gas</b>			<b>2329</b>	<b>2356</b>	<b>Gas</b>	<b>2332</b>	
<b>Gas</b>			<b>2352</b>	<b>2354</b>			
<b>Shells</b>			<b>2354</b>	<b>2356</b>	<b>Gas</b>	<b>2356</b>	
<b>Gas</b>			<b>2356</b>	<b>2345</b>			
<b>30 Foot</b>			<b>2422</b>				
<b>Total Depth</b>				<b>2458</b>			

