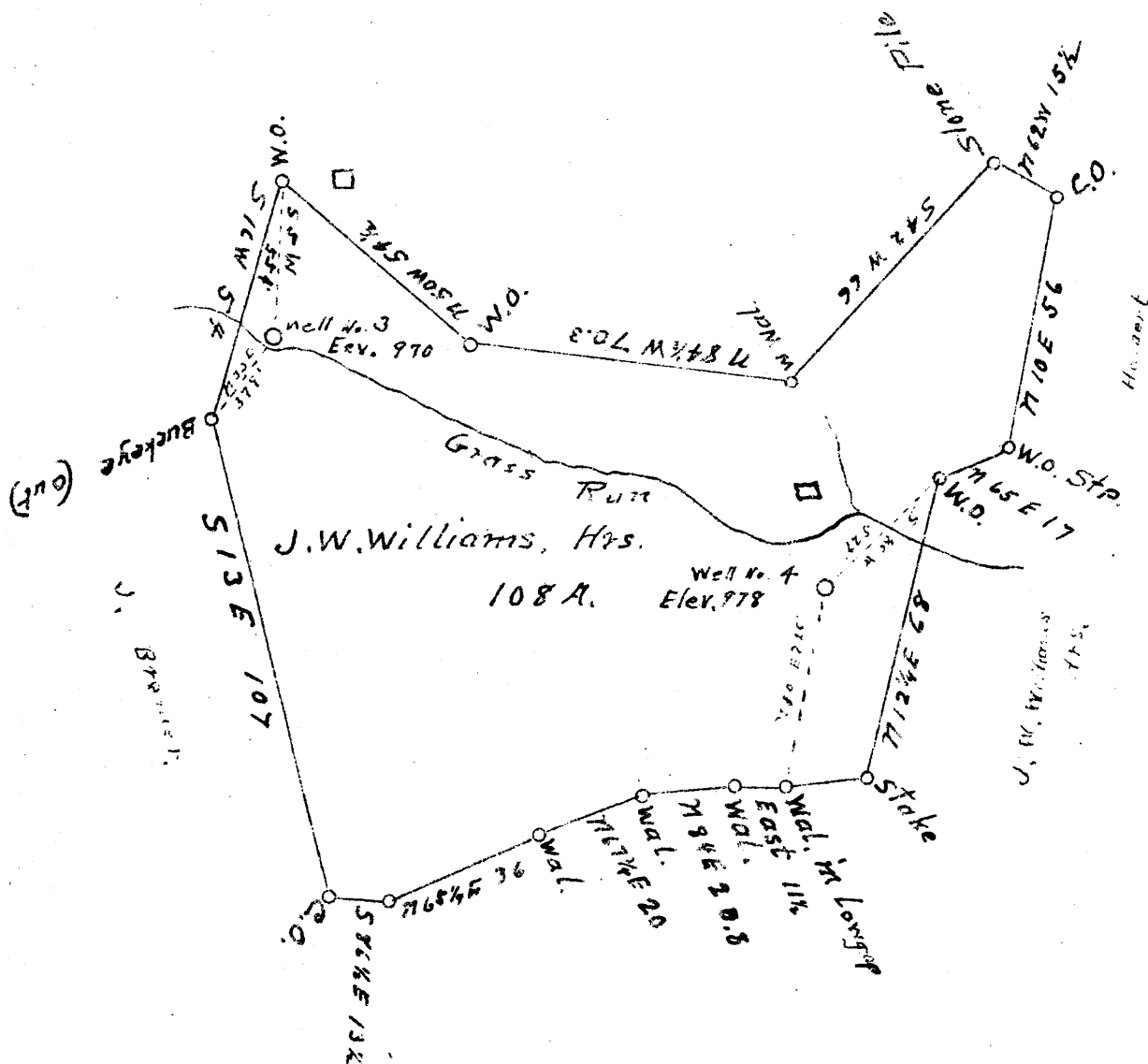


0.34S
3.42W

+ No. 3
+ No. 4

0.52S
3.04W



New Location

Drill Deeper

Abandonment

Company L. E. Zogg

Address Marietta Ohio.

Farm J. W. Williams, Hrs.

Tract ONE Acres 108 Lease No. _____

Well (Farm) No. 3 & 4 Serial No. _____

Elevation (Spirit Level) 970 & 978

Quadrangle Clarkburg

County Harrison District Ten Mile

Engineer J. M. Martin

Engineer's Registration No. 84

File No. _____ Drawing No. _____

Date Nov. 2 1946 Scale 40

STATE OF WEST VIRGINIA
DEPARTMENT OF MINES
OIL AND GAS DIVISION
CHARLESTON

WELL LOCATION MAP
FILE NO. HAR-1026-A; # 3
HAR-1027-A; # 4

+ Denotes location of well on United States Topographic Maps, scale 1 to 62,500, latitude and longitude lines being represented by border lines as shown.

- Denotes one inch spaces on border line of original tracing.

J. W. WILLIAMS HEIRS NO. 4 WELL.

Tennile District, Harrison County, W. Va.

By L. S. Zogg, R. D. No. 3, Marietta, Ohio.

On 108 acres, on Grass Run.

Surface and minerals owned by J. W. Williams Heirs, Clarksburg, W. Va.

Drilling completed November 1945 (No permit No.)

Open flow, 76/10ths W. in 3" = 827 Mcf

1027-A

Salt water, 1236'.

8 1/4", 900'; 6 5/8", 1713'; 2" tubing, 2556'; all left in.

Coal was encountered at 340-346'.

Gas well. Record to Dept. of Mines stamped Nov. 7, 1946.

Record to RCT from Mrs. Griffith March 20, 1947. Old File No. 876.

	Top.	Bottom.
Pittsburgh Coal	340	- 346
Big Dunkard Sand	844	- 900
Gas Sand	940	- 984
1st Salt Sand	1050	- 1110
2nd Salt Sand, hard (water, 1265', 3 bailers hour)	1230	- 1285
Maxton Sand	1615	- 1635
Little Lime	1644	- 1660
Big Lime	1688	- 1745
Big Injun Sand, hard	1745	- 1830
50-Foot Sand	2282	- 2290
Slate	2290	- 2374
30-Foot Sand (gas, 2376')	2374	- 2402
Stray Sand	2406	- 2462
Gordon Sand	2466	- 2487
4th Sand	2495	- 2528
Break	2528	- 2534
Sand (gas, 2535' - 2539')	2534	- 2542
(show oil, 2546-2552')		
Total depth		2556