

LATITUDE 39° 25' 00"

LONGITUDE 80° 52' 08"



2.42  
0.72W

7'5 OGIS topo location

7.5' loc \_\_\_\_\_

15' loc \_\_\_\_\_  
(calc.) \_\_\_\_\_

Company H.N. Co (2982)

Farm Eliza J. Swiser + O.M. Swiser

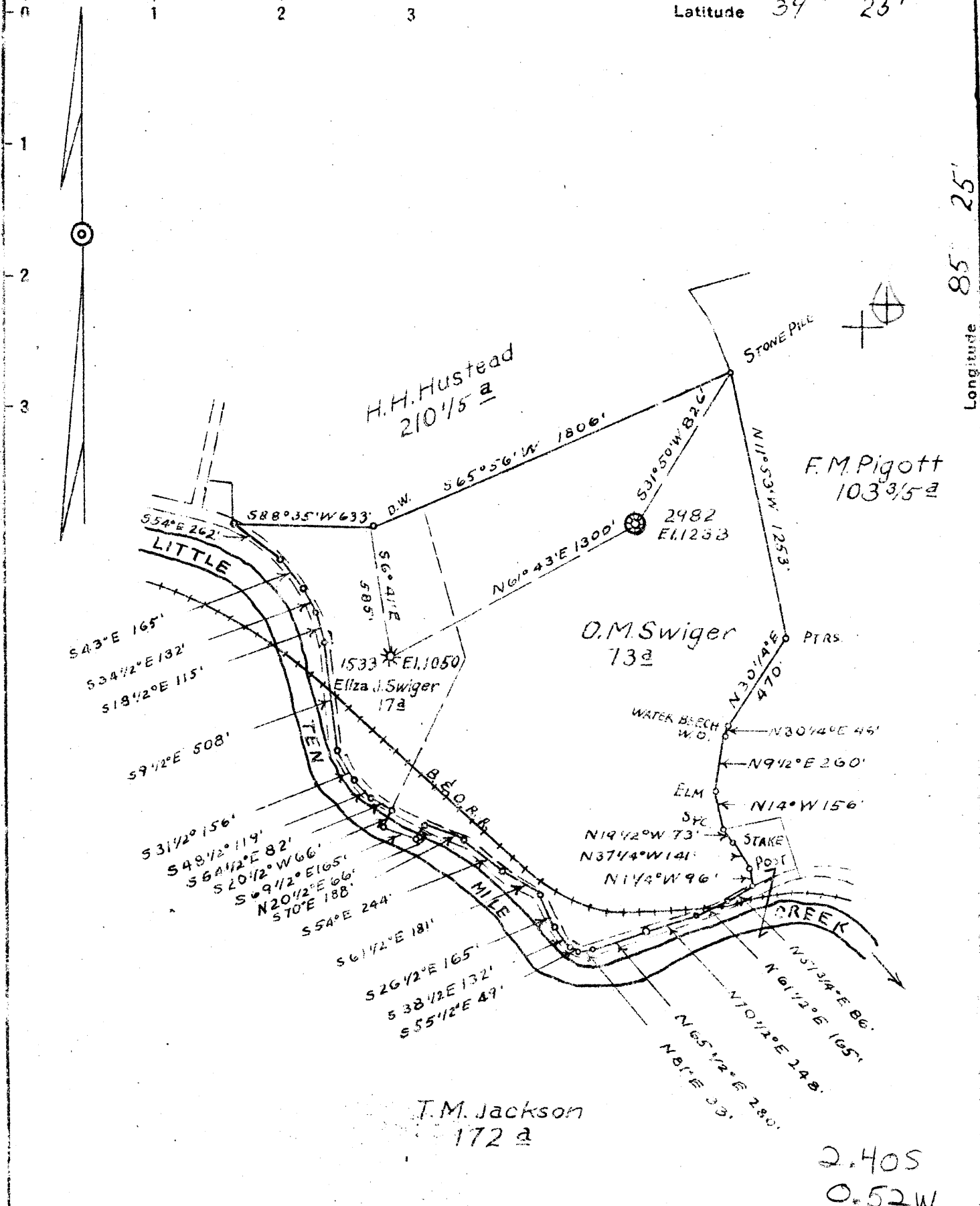
Quad Wallace 7 1/2

County Harrison

District Sardis

WELL LOCATION MAP

File No. HAR-1044A



New Location  |  
 Drill Deeper  |  
 Abandonment  2982 Map Sheet 41 Sq S.5E10 F.B.530 P.33-34

Company	Hope Natural Gas Co.
Address	Clarksburg W.Va.
Farm	ELIZA J. Swiger & O.M. Swiger
Tract	Acres 90 <sup>a</sup> Lease No. 12802
Well (Farm) No.	Serial No. 2982
Elevation (Spirit Level)	1233
Quadrangle	Clarksburg
County	Harrison District Sardis
Engineer	W.M. Lawrence
Engineer's Registration No.	900
File No.	Drawing No.
Date	Jan 13, 1947 Scale 1" = 600'

STATE OF WEST VIRGINIA  
 DEPARTMENT OF MINES  
 OIL AND GAS DIVISION  
 CHARLESTON

**WELL LOCATION MAP**  
 FILE NO. HAR-1044-A

+ Denotes location of well on United States Topographic Maps, scale 1 to 62,500, latitude and longitude lines being represented by border lines as shown.

- Denotes one inch spaces on border line of original tracing.