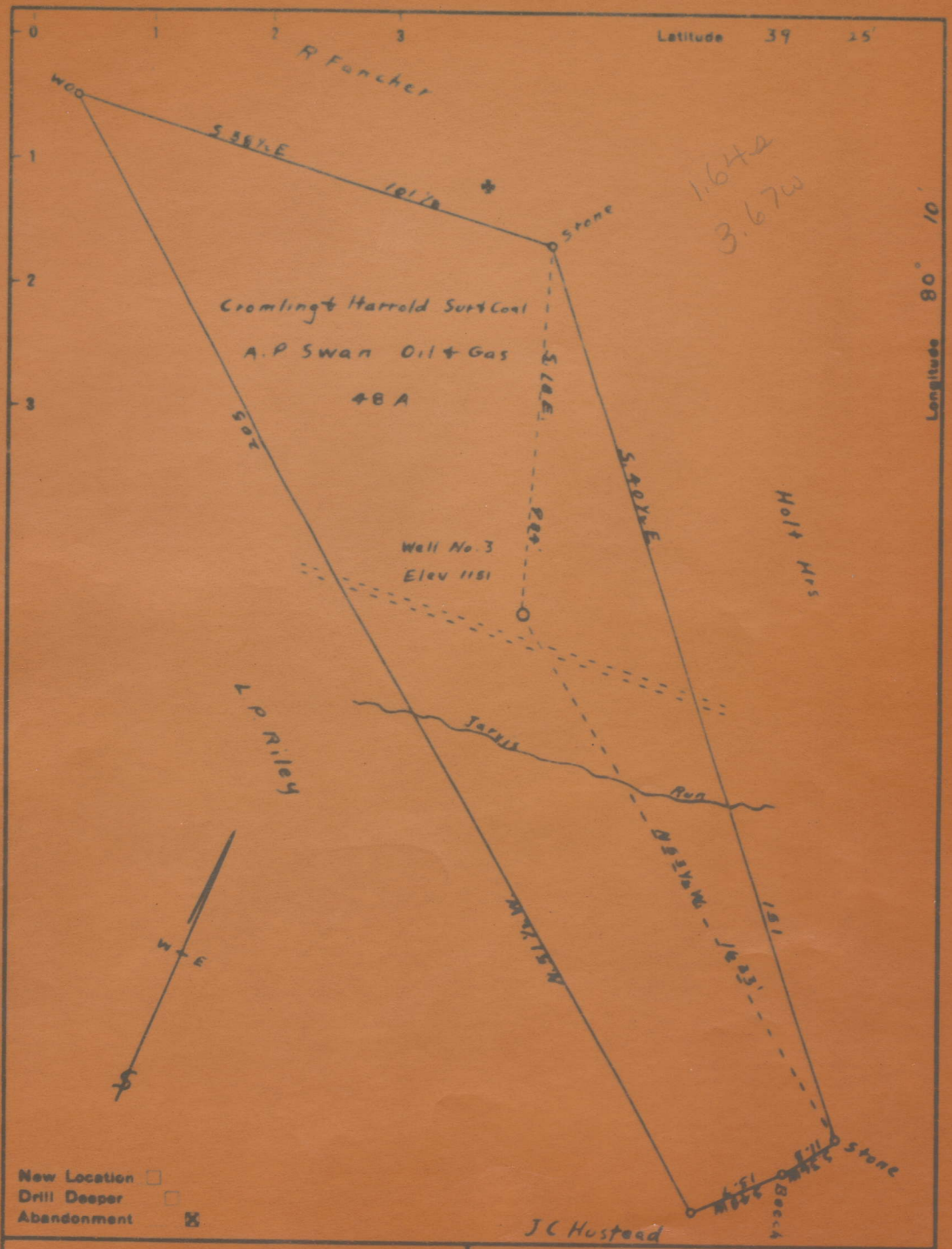


New Location   
 Drill Deeper   
 Abandonment

Company William Moses  
 Address 109 W. Main St. Salem, W. Va.  
 Farm Cromling & Harrold (A.P. Swan)  
 Tract \_\_\_\_\_ Acres 48 Lease No. \_\_\_\_\_  
 Well (Farm) No. 3 Serial No. \_\_\_\_\_  
 Elevation (Spirit Level) 1151  
 Quadrangle Fairmont  
 County Harrison District Clay  
 Elevation 1151

STATE OF WEST VIRGINIA  
 DEPARTMENT OF MINES  
 OIL AND GAS DIVISION  
 CHARLESTON  
**WELL LOCATION MAP**  
 FILE NO. HAR-1095-A  
 + Denotes location of well on United States  
 Topographic Maps, scale 1 to 62,500, lat-  
 itude and longitude lines



Company William Masses

STATE OF WEST VIRGINIA