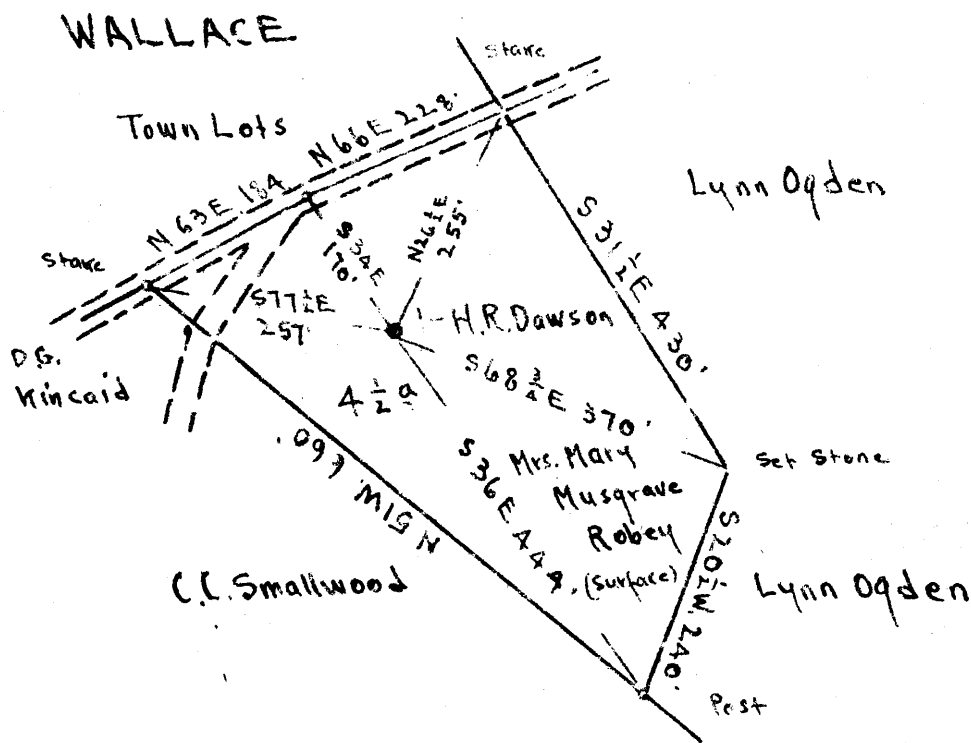


Scale. 1" = 200 Feet



Surface: Mrs. Mary M. Robey, Wallace, Harrison Co., W. Va.  
 Coal: formerly Wallace Coal & Coke Co.  
 now. Miss Margaret Anne Tetrick,  
 271 Clay St., Clarksburg, W. Va.

0.635  
 4.27W

- New Location
- Drill Deeper
- Abandonment

On 400' Map # 3153 S 3-4 E 7

Company Strauss & Beren  
 Address Marietta Ohio.  
 Farm H R Dawson  
 Tract \_\_\_\_\_ Acres 4 1/2 Lease No. \_\_\_\_\_  
 Well (Farm) No. 1 Serial No. \_\_\_\_\_  
 Elevation (Spirit Level) Floor = 1091.30  
Ground = 1086.30  
 Quadrangle CLARKSBURG  
 County Harrison District Sardis  
 Engineer E C Tabler  
 Engineer's Registration No. \_\_\_\_\_  
 File No. \_\_\_\_\_ Drawing No. \_\_\_\_\_  
 Date April 17<sup>th</sup> 1948 Scale 1" = 200 Feet.

STATE OF WEST VIRGINIA  
 DEPARTMENT OF MINES  
 OIL AND GAS DIVISION  
 CHARLESTON

WELL LOCATION MAP  
 FILE NO. HAR-1195-A

+ Denotes location of well on United States Topographic Maps, scale 1 to 62,500, latitude and longitude lines being represented by border lines as shown.

- Denotes one inch spaces on border line of original tracing.



STATE OF WEST VIRGINIA  
DEPARTMENT OF MINES  
OIL AND GAS DIVISION

WELL RECORD

95

Permit No. 1195-A

Oil or Gas Well X  
(KIND)

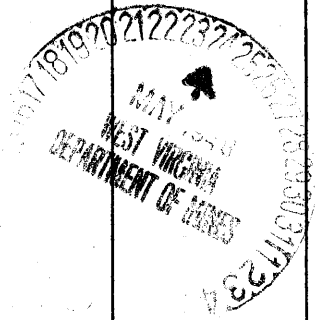
Company Strauss & Beren  
Address Marietta, Ohio  
Farm H.R. Dawson Acres 4 1/2  
Location (waters) Little Ten Mile  
Well No. 1 Elev. 1091.30  
District Sardis County Harrison  
The surface of tract is owned in fee by Mrs. Mary M. Rebey  
Address Wallace, W.Va.  
Mineral rights are owned by Miss Margaret Anne  
Tetrick Address 271 Clay St.,  
Clarksburg, W.Va.  
Drilling commenced \_\_\_\_\_  
Drilling completed \_\_\_\_\_  
Date Shot \_\_\_\_\_ From \_\_\_\_\_ To \_\_\_\_\_  
With \_\_\_\_\_

Casing and Tubing	Used in Drilling	Left in Well	Packers
Size			
16			Kind of Packer
13			
10	410'	none	Size of
8 1/4	1326'	1000'	
6%	2213'	2213'	Depth set
5 3/16	2378'	2378'	
3			Perf. top
2			Perf. bottom
Liners Used	222'	4 1/2x4"	Perf. top
	Set at	2655'	Perf. bottom

Open Flow \_\_\_\_\_ /10ths Water in \_\_\_\_\_ Inch  
\_\_\_\_\_ /10ths Merc. in \_\_\_\_\_ Inch  
Volume \_\_\_\_\_ Cu. Ft.  
Rock Pressure \_\_\_\_\_ lbs. \_\_\_\_\_ hrs.  
Oil \_\_\_\_\_ bbls., 1st 24 hrs.  
Fresh water \_\_\_\_\_ feet \_\_\_\_\_ feet  
Salt water \_\_\_\_\_ feet \_\_\_\_\_ feet

CASING CEMENTED \_\_\_\_\_ SIZE \_\_\_\_\_ No. Ft. \_\_\_\_\_ Date \_\_\_\_\_  
COAL WAS ENCOUNTERED AT 795 FEET \_\_\_\_\_ INCHES  
\_\_\_\_\_ FEET \_\_\_\_\_ INCHES FEET \_\_\_\_\_ INCHES  
\_\_\_\_\_ FEET \_\_\_\_\_ INCHES FEET \_\_\_\_\_ INCHES

Formation	Color	Hard or Soft	Top	Bottom	Oil, Gas or Water	Depth Found	Remarks
Coal, Pgh.			795	800			
Dunkard S.			1325	1355			
Gas Sand			1400	1500			
Big Lime			2030	2075			
Big Injun			2080	2175			
Fifty Foot			2655	2667			
Thirty Foot			2760	2795			
Stray Sand			2802	2858			
Gordon Sand			2874	2905			
Total Depth				2924			



111 19 1945